

GEOGRAPHIC AREAS LEGEND

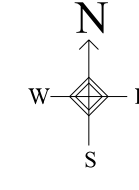
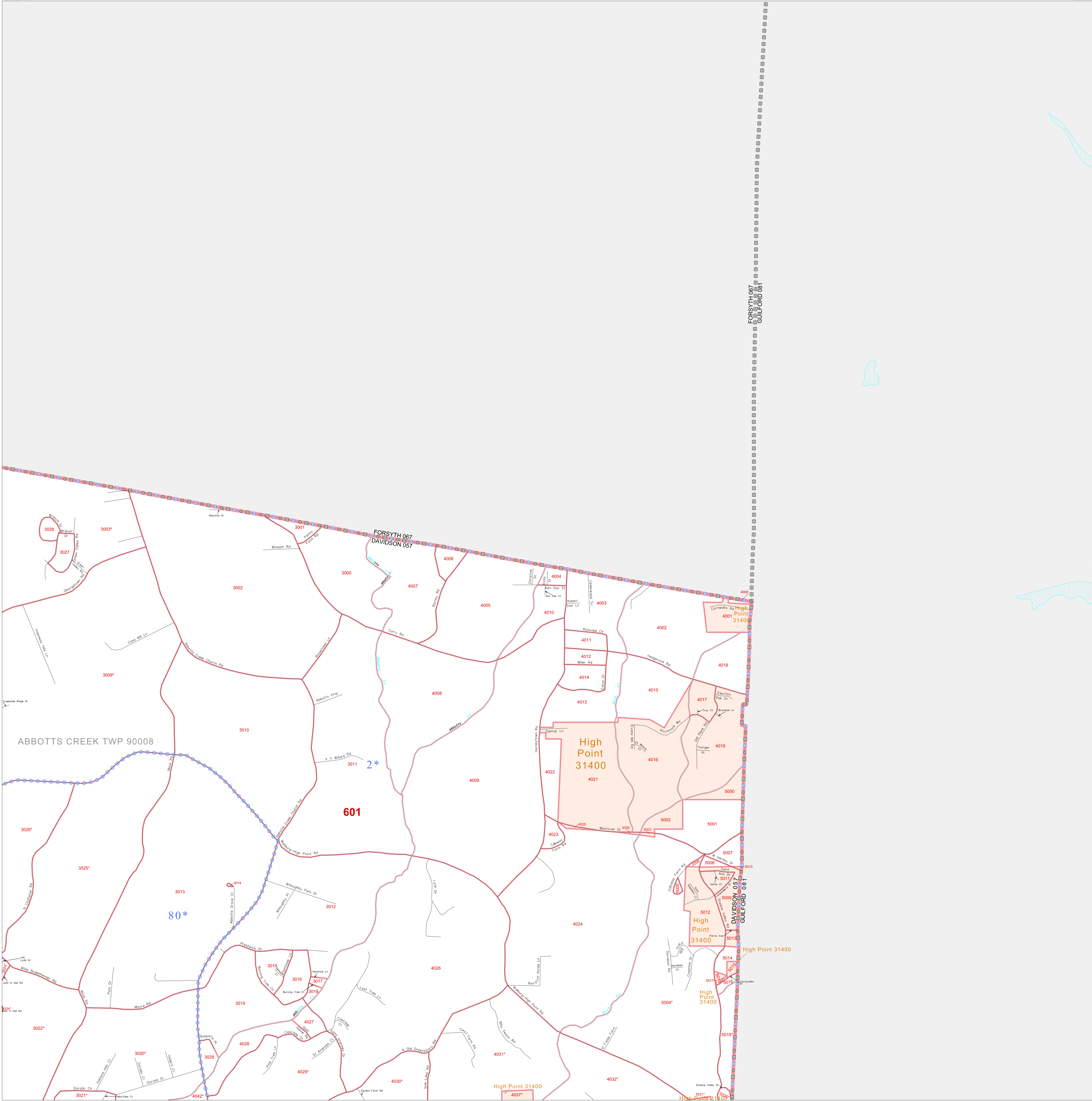
SYMBOL	NAME STYLE
*****	INTERNATIONAL
*****	AIR (FEDERAL)
*****	SDA/SA
*****	TRIBAL SUBDIVISION
//////	STATE
	COUNTY
	MINOR CIVIL DIV.¹
	Incorporated Place¹
	Census Designated Place¹
.....	Corporate Offset Boundary
.....	Voting District²
.....	Census Tract³
.....	BLOCK³

Abbreviation Reference: AIR = American Indian Reservation; SDA/SA = State Designated American Indian Statistical Area; Tribal Subdivision = American Indian Tribal Subdivision

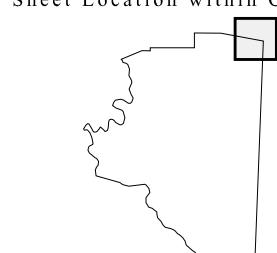
1 A¹ following a place name indicates that the place is consecutive with a MCD. A¹¹ indicates that the place is also a false MCD. In both cases, the MCD name is shown only when it differs from the place name.

2 A¹¹ following a VTD code indicates an actual voting district. Its absence indicates that the VTD is a pseudo voting district or no information is available as to its status.

3 A¹¹ following a block number indicates that the block number is repeated elsewhere in the block.



Sheet Location within County



Key to Adjacent Sheets

3	4
7	8

ST: North Carolina (37)
 COU: Davidson (057)
 SHEET 4 OF 27 PARENT SHEETS



All legal boundaries and names are as of January 1, 2000. The boundaries shown on this map are for Census Bureau statistical data collection and tabulation purposes only; their depiction and designation for statistical purposes does not constitute a determination of jurisdictional authority or rights of ownership or entitlement. U.S. DEPARTMENT OF COMMERCE Economics and Statistics Administration U.S. Census Bureau