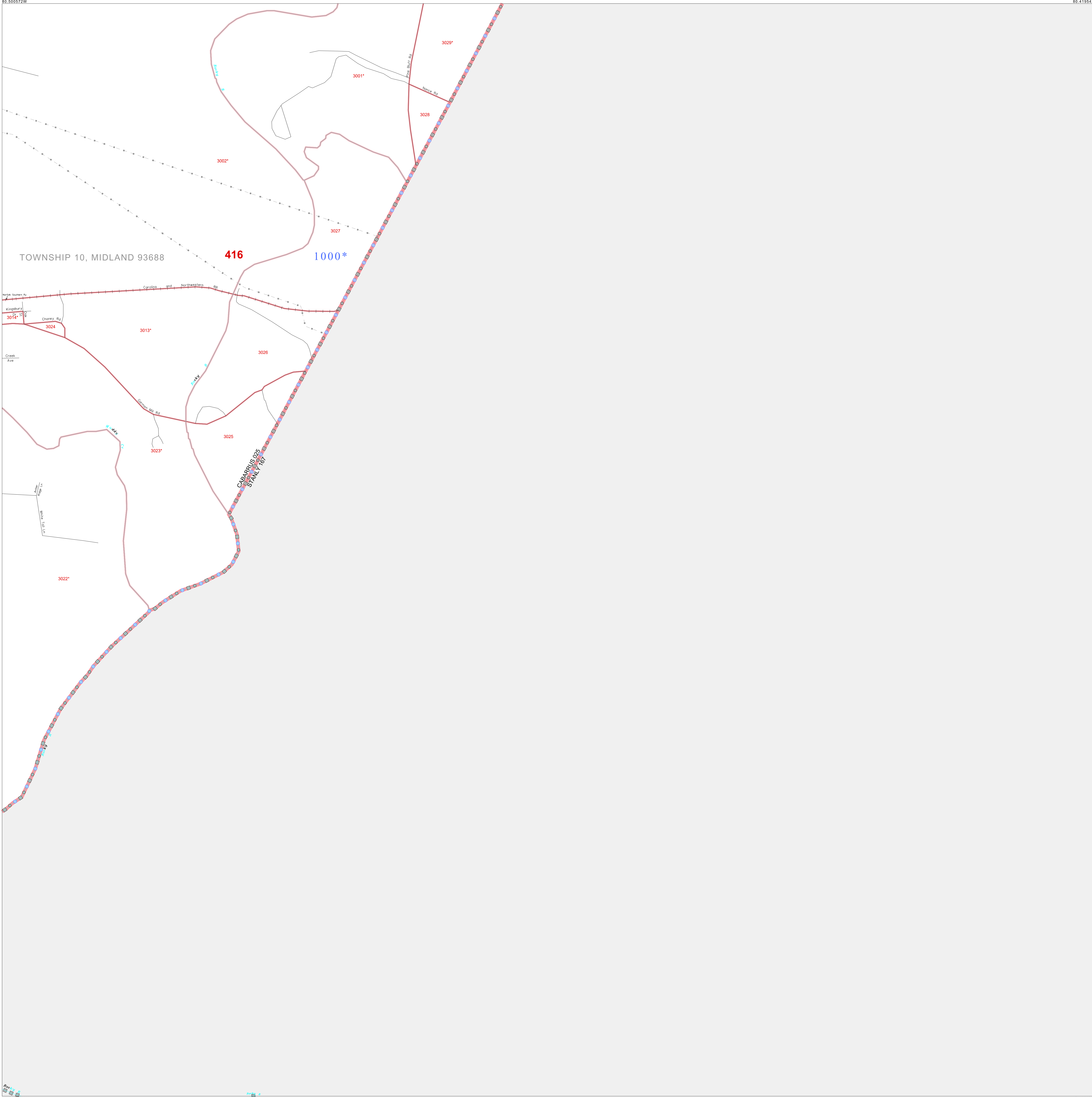


35 246694N
80 500572W

35 246694N
80 419542W



GEOGRAPHIC AREAS LEGEND

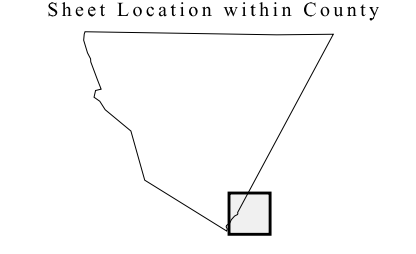
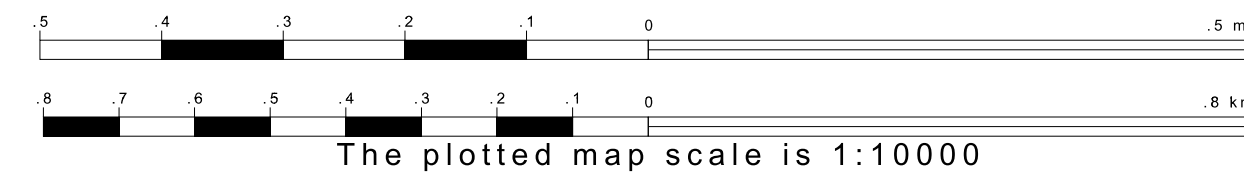
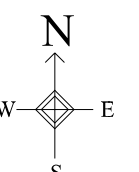
SYMBOL	NAME STYLE
☆☆☆☆☆	INTERNATIONAL
★ ★ ★ ★ ★	AIR (FEDERAL)
◇ ◇ ◇ ◇ ◇	SDA/SA
○ ○ ○ ○ ○	TRIBAL SUBDIVISION
///////	STATE
■■■■■	COUNTY
□ □ □ □ □	MINOR CIVIL DIV.¹
■ ■ ■ ■ ■	Incorporated Place¹
■ ■ ■ ■ ■	Census Designated Place¹
-----	Corporate Offset Boundary
● ● ● ● ●	Voting District²
— — — — —	Census Tract
— — — — —	BLOCK³

Military: [] Inset [] Out Area []

Abbreviation Reference: AIR = American Indian Reservation; SDA/SA = State Designated American Indian Statistical Area; Tribal Subdivision = American Indian Tribal Subdivision
 1 A * * following a place name indicates that the place is coterminous with a MCD. A * * indicates that the place is also a false MCD. In both cases, the MCD name is shown only when it differs from the place name.
 2 A * * following a VTD code indicates an actual voting district. Its absence indicates that the VTD is a pseudo voting district or no information is available as to its status.
 3 A * * following a block number indicates that the block number is repeated elsewhere in the block.

35 180351N
80 500572W

35 180351N
80 419542W



Key to Adjacent Sheets

22	23
25	26

ST: North Carolina (37)
 COU: Cabarrus (025)
 SHEET 26 OF 26 PARENT SHEETS

All legal boundaries and names are as of January 1, 2000. The boundaries shown on this map are for Census Bureau statistical data collection and tabulation purposes only; their depiction and designation for statistical purposes does not constitute a determination of jurisdictional authority or rights of ownership or entitlement. U.S. DEPARTMENT OF COMMERCE Economics and Statistics Administration U.S. Census Bureau

