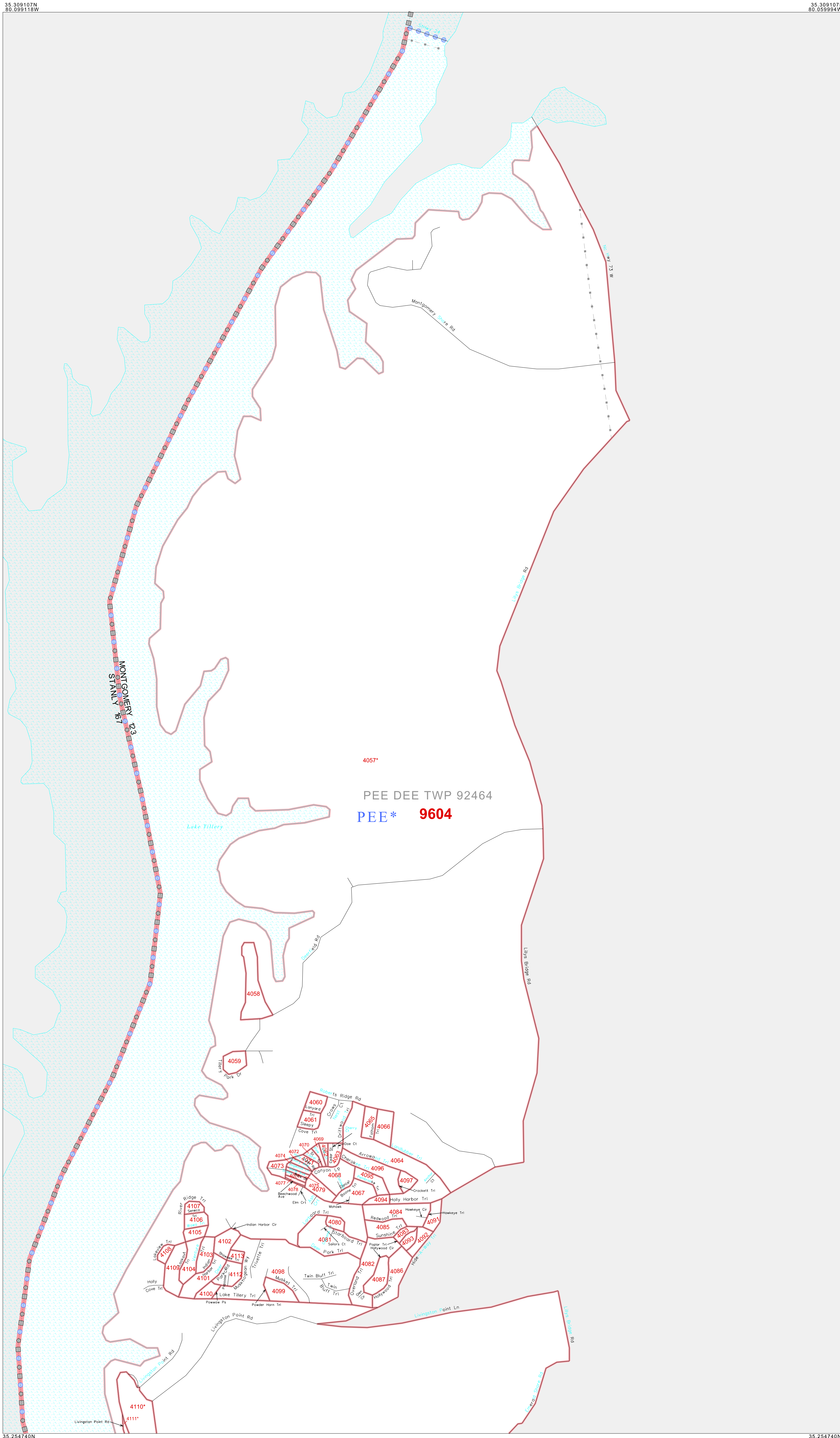


P. L. 94-171 COUNTY BLOCK MAP (CENSUS 2000)



**GEOGRAPHIC AREAS LEGEND**

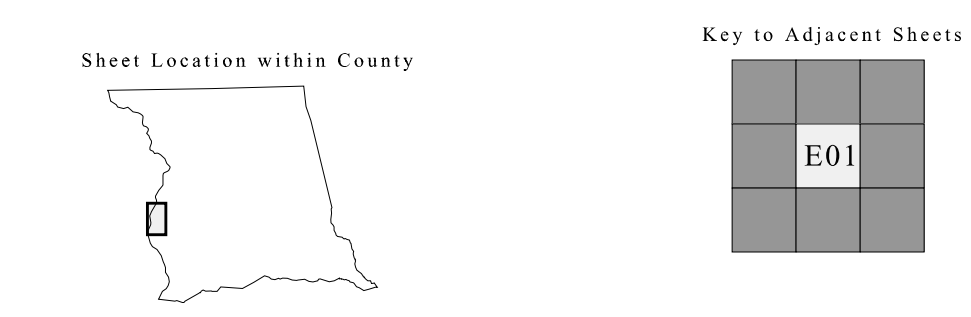
SYMBOL	NAME STYLE
☆☆☆☆☆	INTERNATIONAL
★☆☆☆☆	AIR (FEDERAL)
◆◆◆◆◆	SDA/SA
●●●●●	TRIBAL SUBDIVISION
///////	STATE
■■■■■	COUNTY
□□□□□	MINOR CIVIL DIV.¹
■■■■■	Incorporated Place¹
■■■■■	Census Designated Place¹
-----	Corporate Offset Boundary
●●●●●	Voting District²
■■■■■	Census Tract
■■■■■	BLOCK³
■	Military
■	Inset
■	Out Area

Abbreviation Reference: AIR = American Indian Reservation; SDA/SA = State Designated American Indian Statistical Area; Tribal Subdivision = American Indian Tribal Subdivision

1 A \* \* following a place name indicates that the place is coterminous with a MCD. A \* \* indicates that the place is also a false MCD. In both cases, the MCD name is shown only when it differs from the place name.

2 A \* \* following a VTD code indicates an actual voting district. Its absence indicates that the VTD is a pseudo voting district or no information is available as to its status.

3 A \* \* following a block number indicates that the block number is repeated elsewhere in the block.



ST: North Carolina (37)  
 COU: Montgomery (123)  
 INSET SHEET E01

P.L. 94-171 COUNTY BLOCK MAP (Census 2000)  
 (CKPLBLK) 2105712369010000000

All legal boundaries and names are as of January 1, 2000. The boundaries shown on this map are for Census Bureau statistical data collection and tabulation purposes only; their depiction and designation for statistical purposes does not constitute a determination of jurisdictional authority or rights of ownership or entitlement. U.S. DEPARTMENT OF COMMERCE Economics and Statistics Administration U.S. Census Bureau