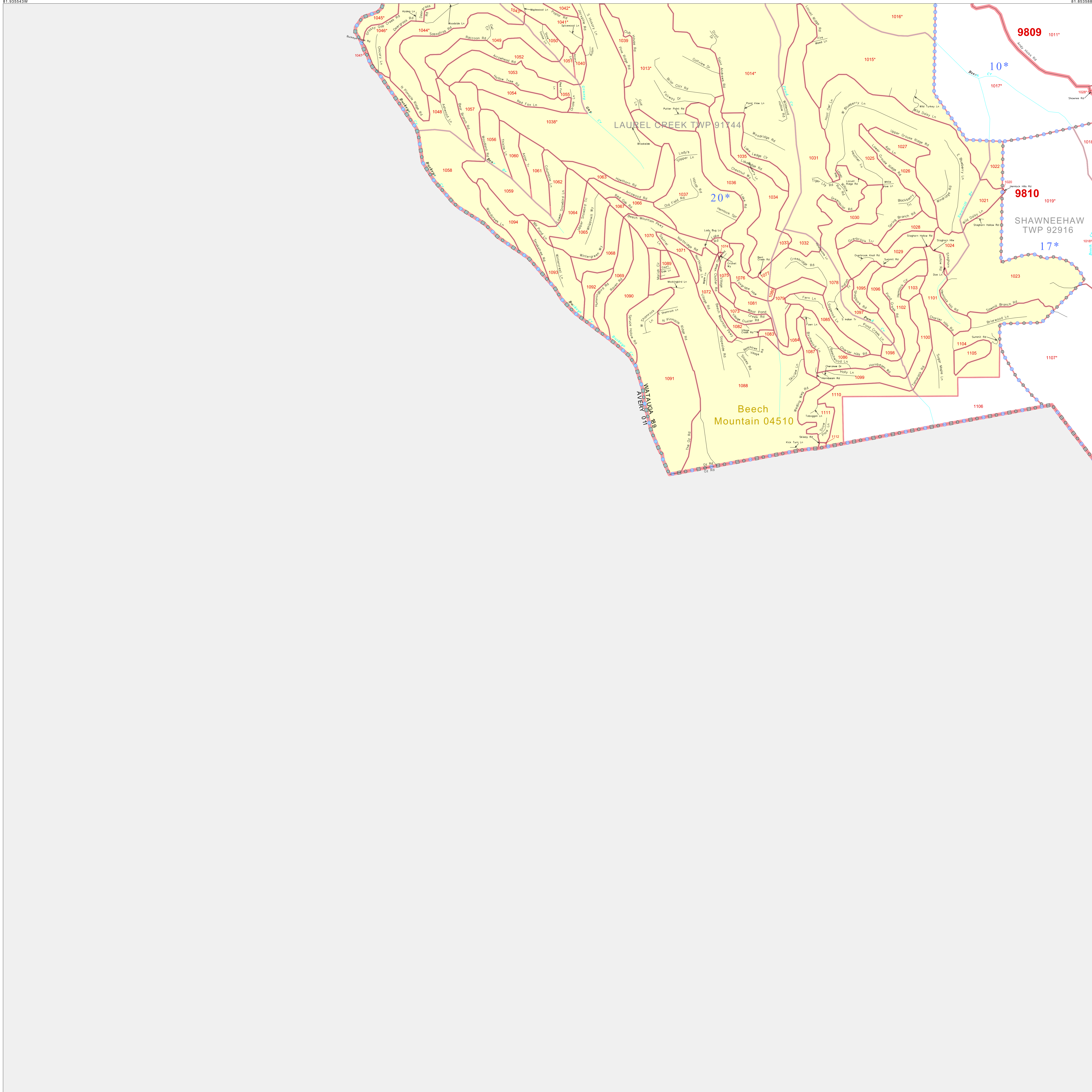


P. L. 94-171 COUNTY BLOCK MAP (CENSUS 2000)

36.218163N  
81.935843W

36.218163N  
81.935843W



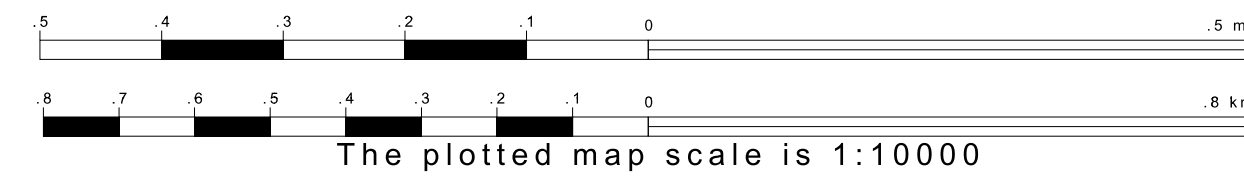
GEOGRAPHIC AREAS LEGEND

SYMBOL	NAME STYLE
☆☆☆☆☆	INTERNATIONAL
★☆☆☆☆	AIR (FEDERAL)
◇◇◇◇◇	SDA/SA
◇◇◇◇◇	TRIBAL SUBDIVISION
	STATE
▣▣▣▣▣	COUNTY
⊙⊙⊙⊙⊙	MINOR CIVIL DIV. <sup>1</sup>
▭▭▭▭▭	Incorporated Place <sup>1</sup>
▭▭▭▭▭	Census Designated Place <sup>1</sup>
-----	Corporate Offset Boundary
●●●●●	Voting District <sup>2</sup>
▬▬▬▬▬	Census Tract
▬▬▬▬▬	BLOCK <sup>3</sup>

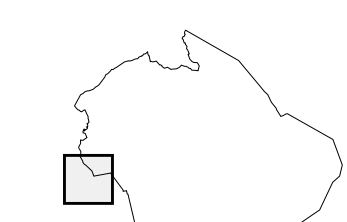
Abbreviation Reference: AIR = American Indian Reservation; SDA/SA = State Designated American Indian Statistical Area; Tribal Subdivision = American Indian Tribal Subdivision.  
 1 A \* \* following a place name indicates that the place is consistent with a MCD. A \* \* indicates that the place is also a false MCD. In both cases, the MCD name is shown only when it differs from the place name.  
 2 A \* \* following a VTD code indicates an actual voting district. Its absence indicates that the VTD is a pseudo voting district or no information is available as to its status.  
 3 A \* \* following a block number indicates that the block number is repeated elsewhere in the block.

36.151778N  
81.935843W

36.151778N  
81.935843W



Sheet Location within County



Key to Adjacent Sheets

9	10
15	16
	21

ST: North Carolina (37)  
 COU: Watauga (189)  
 SHEET 15 OF 25 PARENT SHEETS

All legal boundaries and names are as of January 1, 2000. The boundaries shown on this map are for Census Bureau statistical data collection and tabulation purposes only; their depiction and designation for statistical purposes does not constitute a determination of jurisdictional authority or rights of ownership or entitlement. U.S. DEPARTMENT OF COMMERCE Economics and Statistics Administration U.S. Census Bureau

