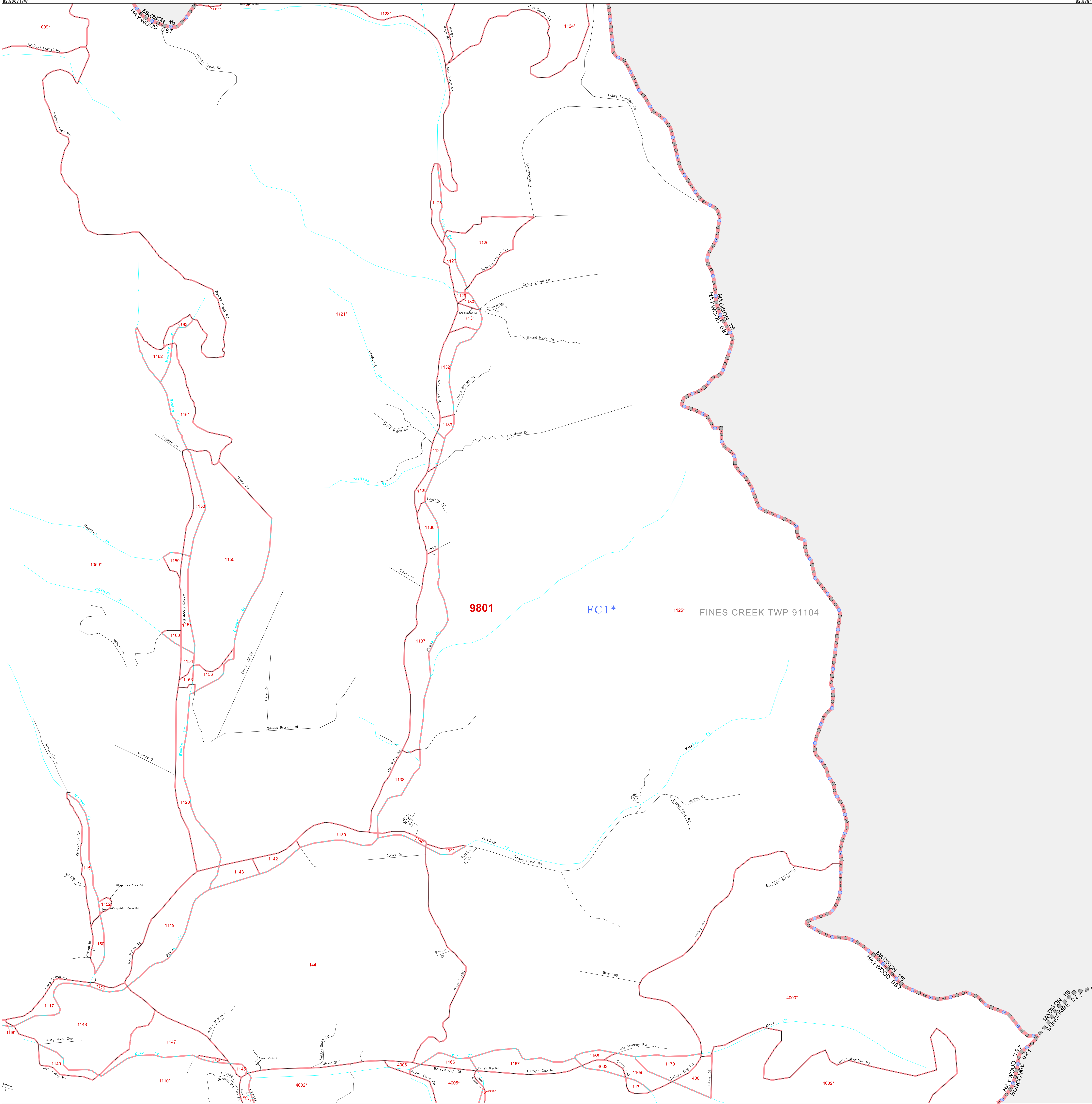


P. L. 94-171 COUNTY BLOCK MAP (CENSUS 2000)

35 740498N
82 960717W

35 740498N
82 979491W



GEOGRAPHIC AREAS LEGEND

SYMBOL	NAME STYLE
☆ ☆ ☆ ☆ ☆	INTERNATIONAL
★ ★ ★ ★ ★	AIR (FEDERAL)
◇ ◇ ◇ ◇ ◇	SDA/SA
○ ○ ○ ○ ○	TRIBAL SUBDIVISION
▨ ▨ ▨ ▨ ▨	STATE
▩ ▩ ▩ ▩ ▩	COUNTY
◻ ◻ ◻ ◻ ◻	MINOR CIVIL DIV. ¹
■ ■ ■ ■ ■	Incorporated Place ¹
■ ■ ■ ■ ■	Census Designated Place ²
⋯ ⋯ ⋯	Corporate Offset Boundary
● ● ● ● ●	Voting District ³
— — — — —	Census Tract
— — — — —	BLOCK ³
⊠ ⊠ ⊠ ⊠ ⊠	Military
⊠ ⊠ ⊠ ⊠ ⊠	Inset
⊠ ⊠ ⊠ ⊠ ⊠	Out Area

Abbreviation Reference: AIR = American Indian Reservation; SDA/SA = State Designated American Indian Statistical Area; Tribal Subdivision = American Indian Tribal Subdivision

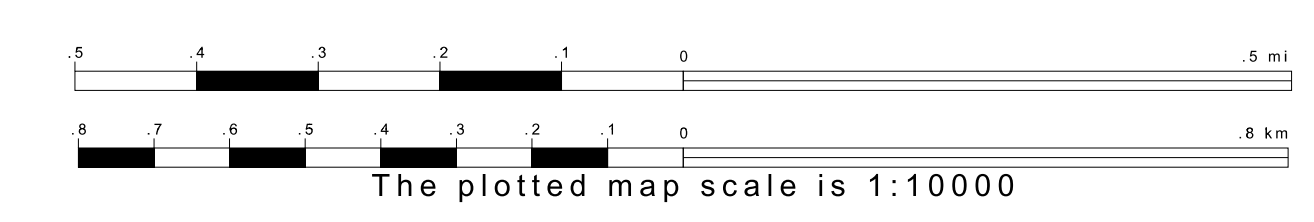
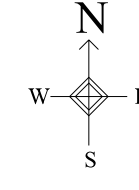
1 A * * following a place name indicates that the place is coterminous with a MCD. A * * indicates that the place is also a false MCD. In both cases, the MCD name is shown only when it differs from the place name.

2 A * * following a VTD code indicates an actual voting district. Its absence indicates that the VTD is a pseudo voting district or no information is available as to its status.

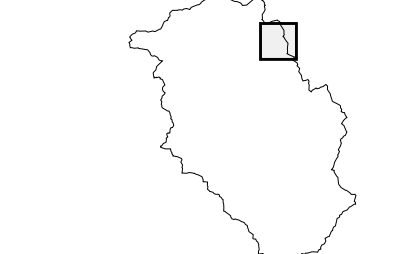
3 A * * following a block number indicates that the block number is repeated elsewhere in the block.

35 674098N
82 960717W

35 674098N
82 979491W



Sheet Location within County



Key to Adjacent Sheets

3	4
8	9
12	13 14

ST: North Carolina (37)
COU: Haywood (087)
SHEET 9 OF 40 PARENT SHEETS



All legal boundaries and names are as of January 1, 2000. The boundaries shown on this map are for Census Bureau statistical data collection and tabulation purposes only; their depiction and designation for statistical purposes does not constitute a determination of jurisdictional authority or rights of ownership or entitlement. U.S. DEPARTMENT OF COMMERCE Economics and Statistics Administration U.S. Census Bureau