

GEOGRAPHIC AREAS LEGEND

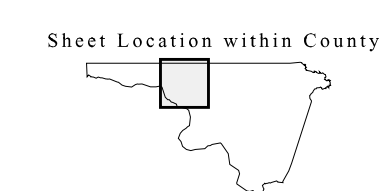
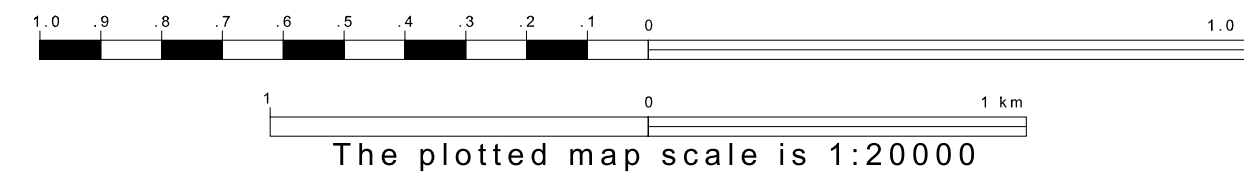
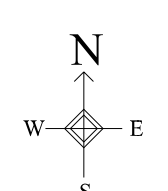
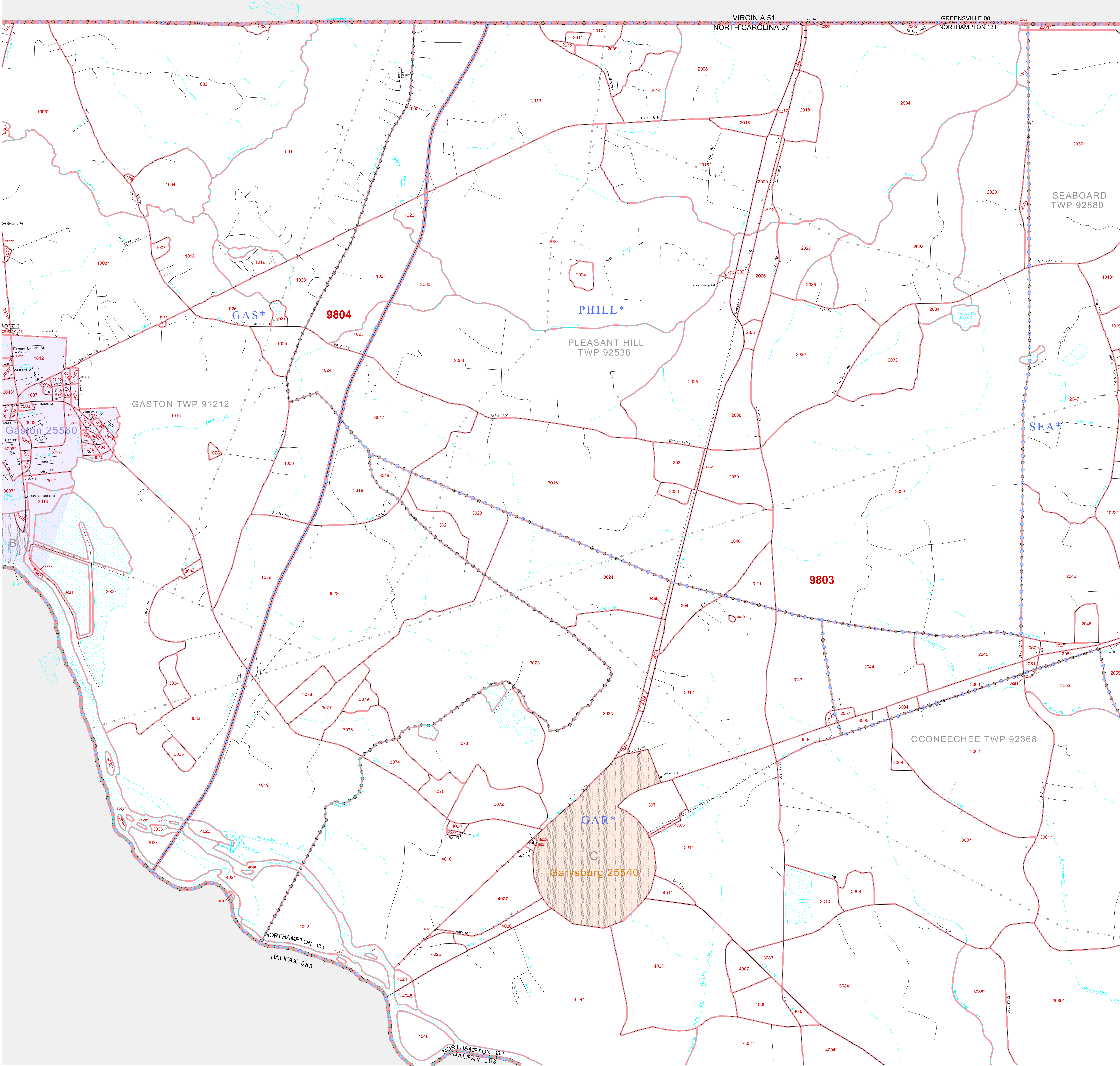
- SYMBOL NAME STYLE
- ***** INTERNATIONAL
- ***** AIR (FEDERAL)
- ***** SDA/SA
- ***** TRIBAL SUBDIVISION
- ////// STATE
- COUNTY
- MINOR CIVIL DIV.¹
- Incorporated Place¹
- Census Designated Place¹
- Corporate Offset Boundary
- Voting District²
- Census Tract
- BLOCK³

Abbreviation Reference: AIR = American Indian Reservation; SDA/SA = State Designated American Indian Statistical Area; Tribal Subdivision = American Indian Tribal Subdivision

1 A * * following a place name indicates that the place is consecutive with a MCD. A * * indicates that the place is also a false MCD. In both cases, the MCD name is shown only when it differs from the place name.

2 A * * following a VTD code indicates an actual voting district. Its absence indicates that the VTD is a pseudo voting district or no information is available as to its status.

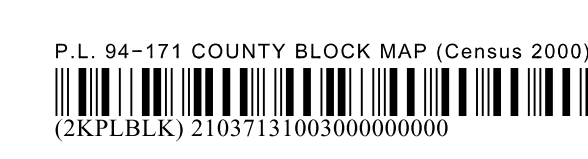
3 A * * following a block number indicates that the block number is repeated elsewhere in the block.



Key to Adjacent Sheets

2	3	4
7	8	

ST: North Carolina (37)
 COU: Northampton (131)
 SHEET 3 OF 12 PARENT SHEETS



All legal boundaries and names are as of January 1, 2000. The boundaries shown on this map are for Census Bureau statistical data collection and tabulation purposes only; their depiction and designation for statistical purposes does not constitute a determination of jurisdictional authority or rights of ownership or entitlement. U.S. DEPARTMENT OF COMMERCE Economics and Statistics Administration U.S. Census Bureau