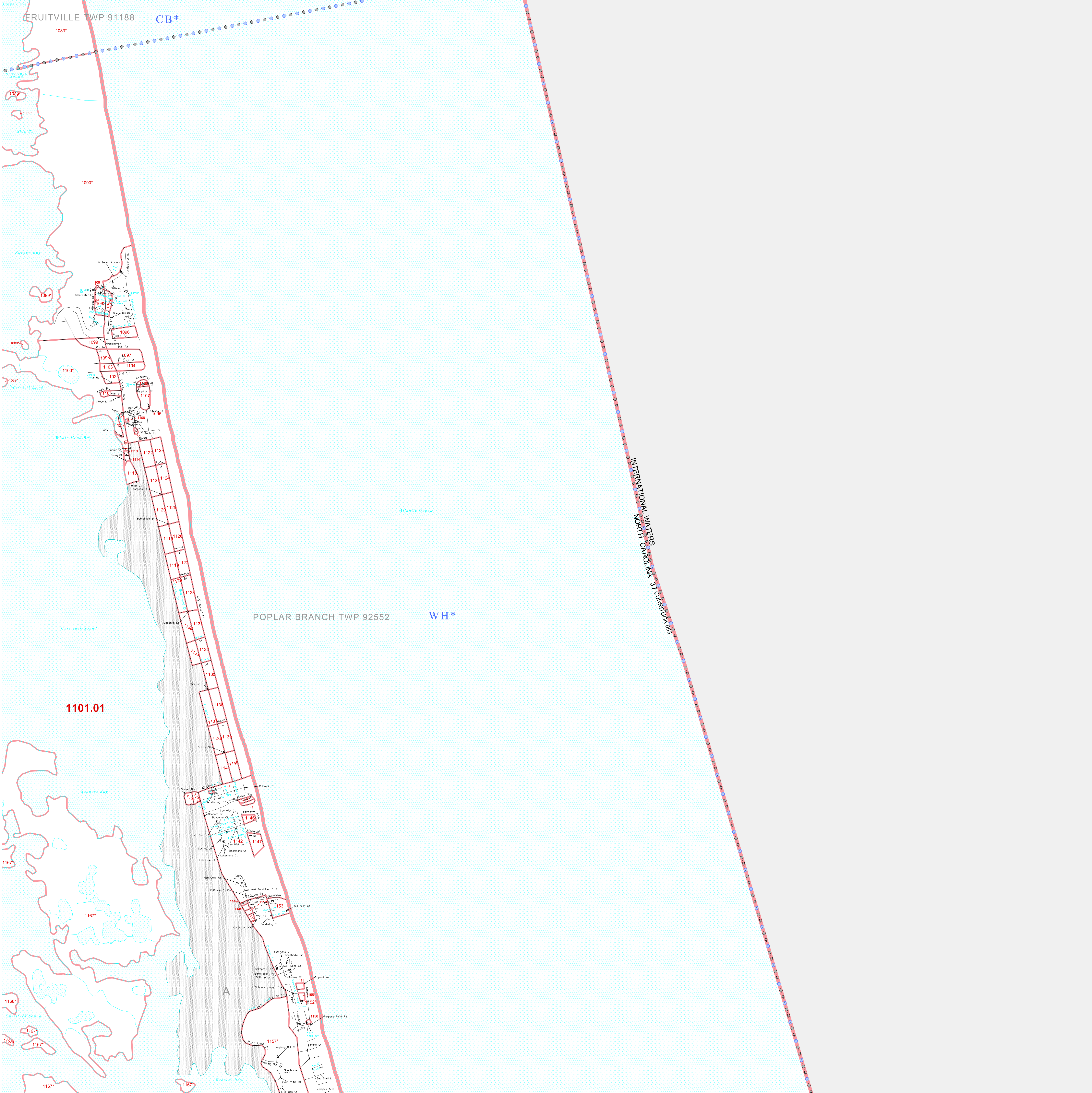


36 422670N  
75 847155W

36 422670N  
75 847155W



**GEOGRAPHIC AREAS LEGEND**

SYMBOL	NAME STYLE
*****	INTERNATIONAL
*****	AIR (FEDERAL)
◇◇◇◇◇	SDA/SA
◇◇◇◇◇	TRIBAL SUBDIVISION
///////	STATE
■■■■■	COUNTY
■■■■■	MINOR CIVIL DIV.¹
■■■■■	Incorporated Place¹
■■■■■	Census Designated Place¹
-----	Corporate Offset Boundary
●●●●●	Voting District²
■■■■■	Census Tract
■■■■■	BLOCK³
■	Military
■	Inset
■	Out Area

Abbreviation Reference: AIR = American Indian Reservation; SDA/SA = State Designated American Indian Statistical Area; Tribal Subdivision = American Indian Tribal Subdivision

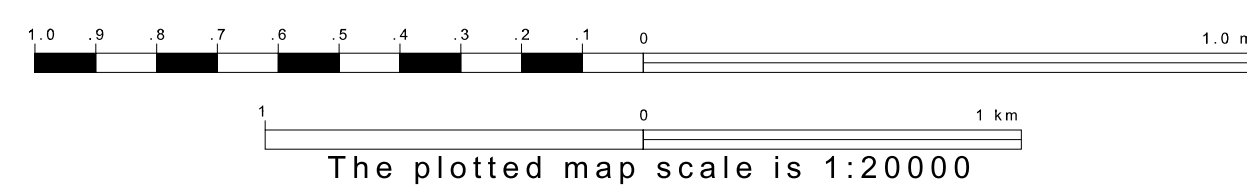
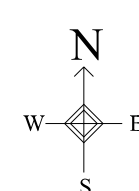
1 A \* \* following a place name indicates that the place is consecutive with a MCD. A \* \* indicates that the place is also a false MCD. In both cases, the MCD name is shown only when it differs from the place name.

2 A \* \* following a VTD code indicates an actual voting district. Its absence indicates that the VTD is a pseudo voting district or no information is available as to its status.

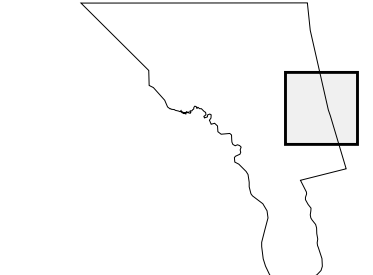
3 A \* \* following a block number indicates that the block number is repeated elsewhere in the block.

36 289904N  
75 847155W

36 289904N  
75 847155W



Sheet Location within County



Key to Adjacent Sheets

3	4
6	7
8	9

ST: North Carolina (37)  
COU: Currituck (053)  
SHEET 7 OF 11 PARENT SHEETS



All legal boundaries and names are as of January 1, 2000. The boundaries shown on this map are for Census Bureau statistical data collection and tabulation purposes only; their depiction and designation for statistical purposes does not constitute a determination of jurisdictional authority or rights of ownership or entitlement. U.S. DEPARTMENT OF COMMERCE Economics and Statistics Administration U.S. Census Bureau