

36 147221N
81 416892W

36 147221N
81 314892W

GEOGRAPHIC AREAS LEGEND

SYMBOL	NAME STYLE
☆☆☆☆	INTERNATIONAL
★ ★ ★ ★ ★	AIR (FEDERAL)
◇ ◇ ◇ ◇ ◇	SDA/SA
○ ○ ○ ○ ○	TRIBAL SUBDIVISION
//////	STATE
■■■■■	COUNTY
● ● ● ● ●	MINOR CIVIL DIV. ¹
■ ■ ■ ■ ■	Incorporated Place ¹
■ ■ ■ ■ ■	Census Designated Place ¹
-----	Corporate Offset Boundary
● ● ● ● ●	Voting District ²
—————	Census Tract
—————	BLOCK ³

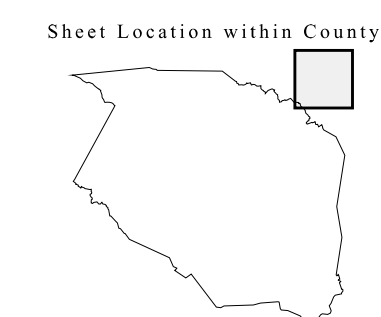
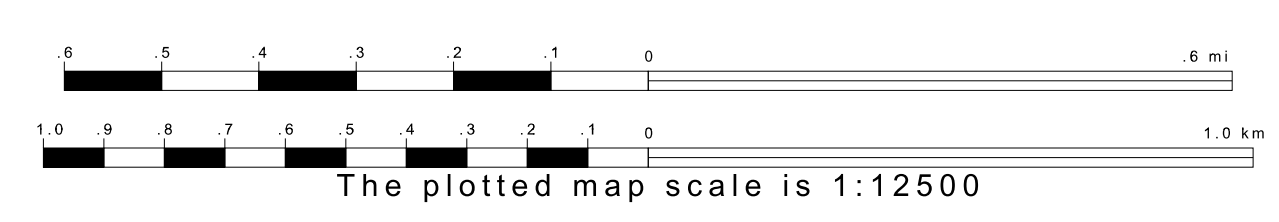
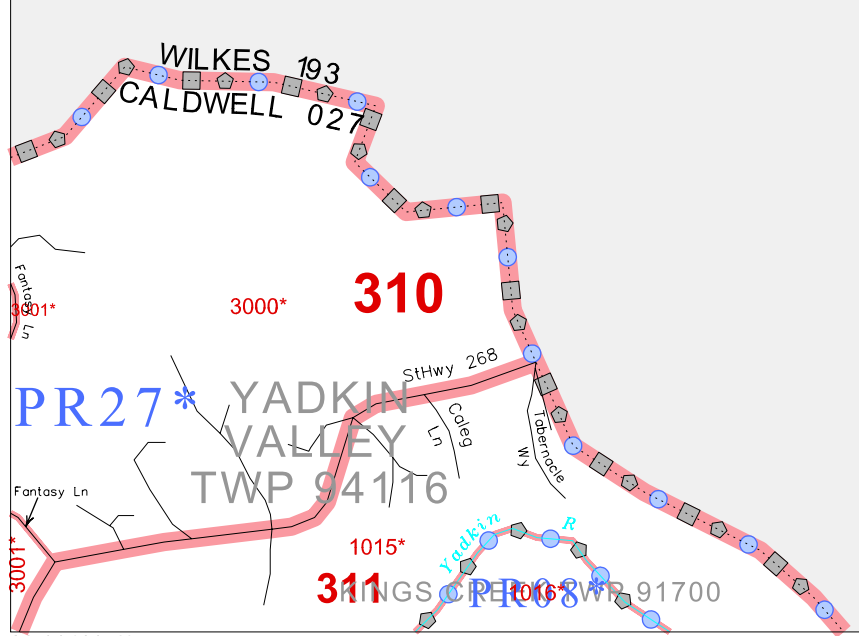
Military: [] Inset: [] Out Area: []

Abbreviation Reference: AIR = American Indian Reservation; SDA/SA = State Designated American Indian Statistical Area; Tribal Subdivision = American Indian Tribal Subdivision

1 A * * following a place name indicates that the place is coterminous with a MCD. A * * indicates that the place is also a false MCD. In both cases, the MCD name is shown only when it differs from the place name.

2 A * * following a VTD code indicates an actual voting district. Its absence indicates that the VTD is a pseudo voting district or no information is available as to its status.

3 A * * following a block number indicates that the block number is repeated elsewhere in the block.



Key to Adjacent Sheets

4	5
9	10

ST: North Carolina (37)
 COU: Caldwell (027)
 SHEET 5 OF 23 PARENT SHEETS

