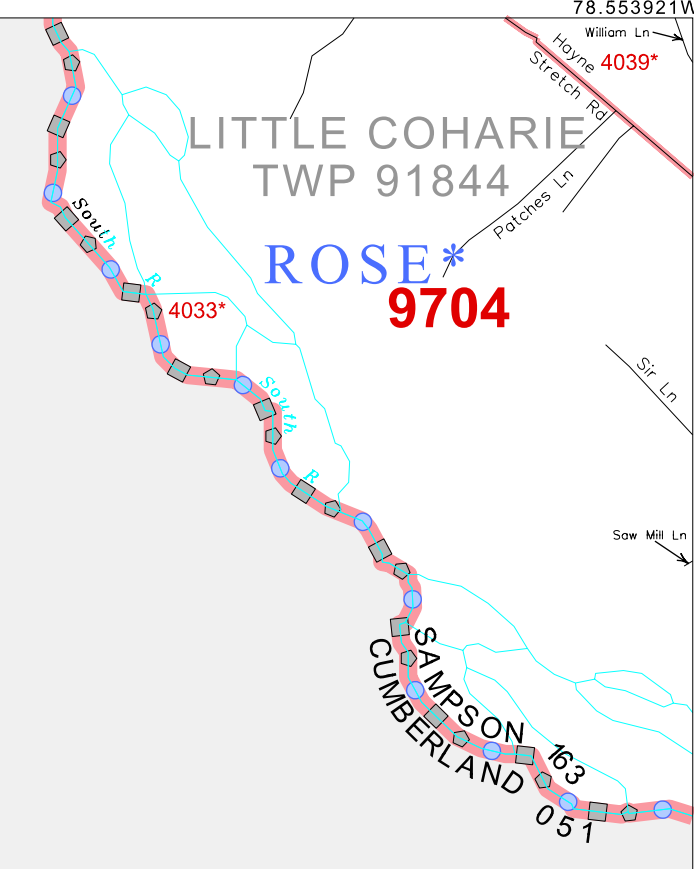
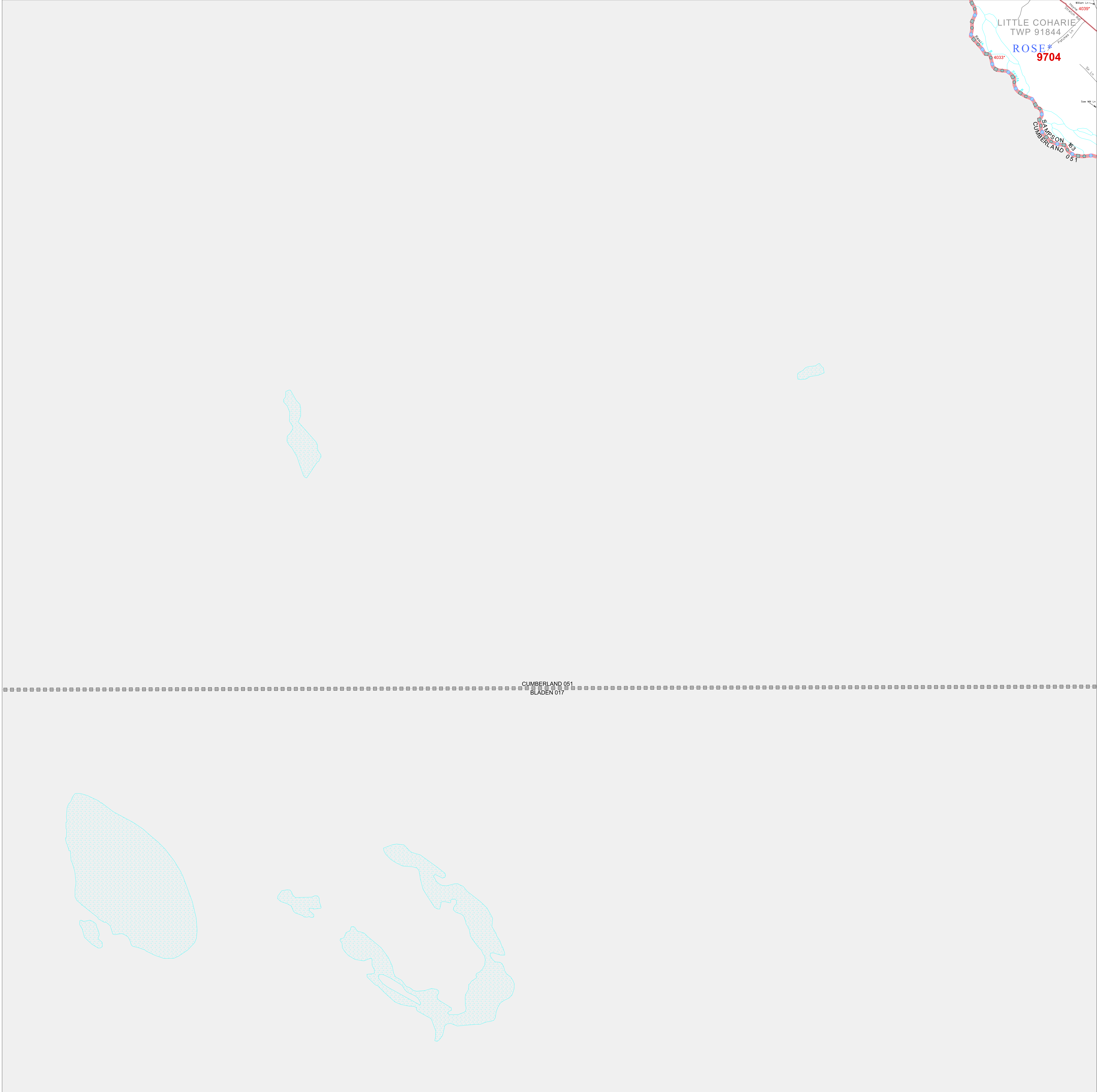


P.L. 94-171 COUNTY BLOCK MAP (CENSUS 2000)

34 934571N
78 715169W

34 934571N
78 553921W



GEOGRAPHIC AREAS LEGEND

SYMBOL	NAME STYLE
*****	INTERNATIONAL
*****	AIR (FEDERAL)
*****	SDA/SA
*****	TRIBAL SUBDIVISION
//////	STATE
	COUNTY
-----	MINOR CIVIL DIV. ¹
-----	Incorporated Place ¹
-----	Census Designated Place ¹
-----	Corporate Offset Boundary
.....	Voting District ²
-----	Census Tract
-----	BLOCK ³

Abbreviation Reference: AIR = American Indian Reservation; SDA/SA = State Designated American Indian Statistical Area; Tribal Subdivision = American Indian Tribal Subdivision

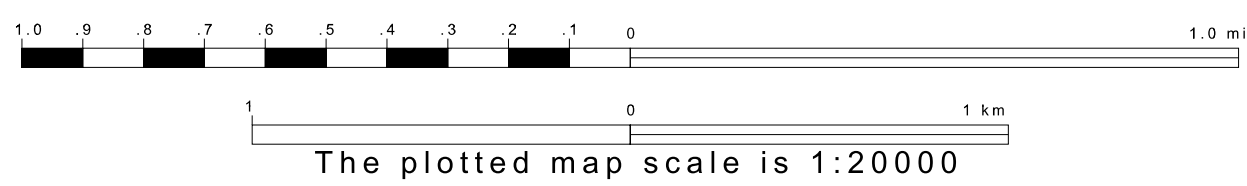
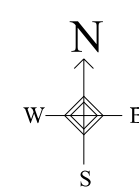
1 A * * following a place name indicates that the place is coterminous with a MCD. A * * indicates that the place is also a false MCD. In both cases, the MCD name is shown only when it differs from the place name.

2 A * * following a VTD code indicates an actual voting district. Its absence indicates that the VTD is a pseudo voting district or no information is available as to its status.

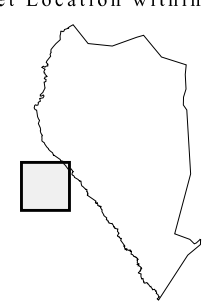
3 A * * following a block number indicates that the block number is repeated elsewhere in the block.

34 801774N
78 715169W

34 801774N
78 553921W



Sheet Location within County



Key to Adjacent Sheets

9	10
13	14
	17

ST: North Carolina (37)
COU: Sampson (163)
SHEET 13 OF 21 PARENT SHEETS

