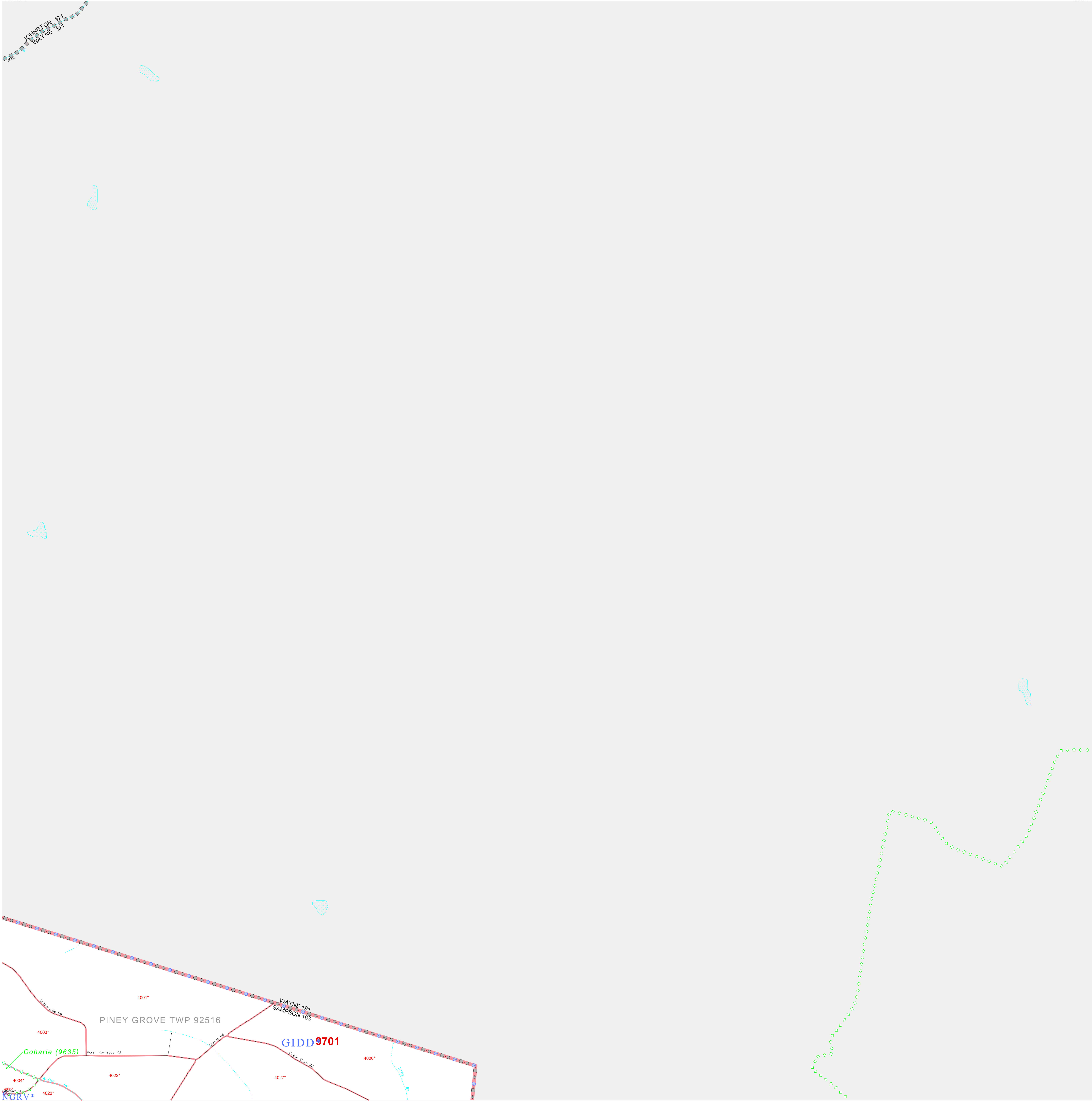


P. L. 94-171 COUNTY BLOCK MAP (CENSUS 2000)

35 332962N
78 231427W

35 332962N
78 070180W



GEOGRAPHIC AREAS LEGEND

SYMBOL	NAME STYLE
*****	INTERNATIONAL
*****	AIR (FEDERAL)
◇◇◇◇◇◇	SDA/SA
◇◇◇◇◇◇	TRIBAL SUBDIVISION
//////	STATE
■■■■■	COUNTY
●●●●●	MINOR CIVIL DIV. ¹
■■■■■	Incorporated Place ¹
■■■■■	Census Designated Place ¹
-----	Corporate Offset Boundary
●●●●●	Voting District ²
■■■■■	Census Tract
■■■■■	BLOCK ³
■	Military
■	Inset
■	Out Area

Abbreviation Reference: AIR = American Indian Reservation; SDA/SA = State Designated American Indian Statistical Area; Tribal Subdivision = American Indian Tribal Subdivision

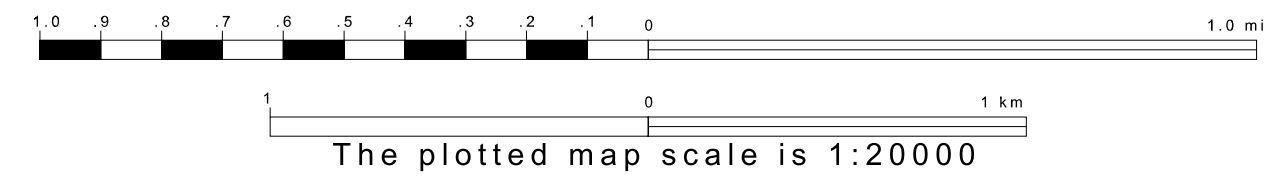
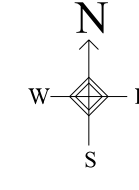
1 A " " following a place name indicates that the place is coterminous with a MCD. A " " indicates that the place is also a false MCD. In both cases, the MCD name is shown only when it differs from the place name.

2 A " " following a VTD code indicates an actual voting district. Its absence indicates that the VTD is a pseudo voting district or no information is available as to its status.

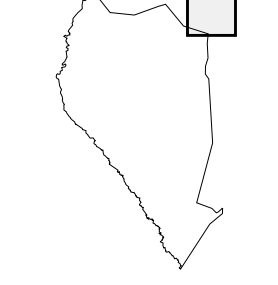
3 A " " following a block number indicates that the block number is repeated elsewhere in the block.

35 332962N
78 231427W

35 332962N
78 070180W



Sheet Location within County



Key to Adjacent Sheets

3	4
7	8

ST: North Carolina (37)
COU: Sampson (163)
SHEET 4 OF 21 PARENT SHEETS

All legal boundaries and names are as of January 1, 2000. The boundaries shown on this map are for Census Bureau statistical data collection and tabulation purposes only; their depiction and designation for statistical purposes does not constitute a determination of jurisdictional authority or rights of ownership or entitlement. U.S. DEPARTMENT OF COMMERCE Economics and Statistics Administration U.S. Census Bureau

