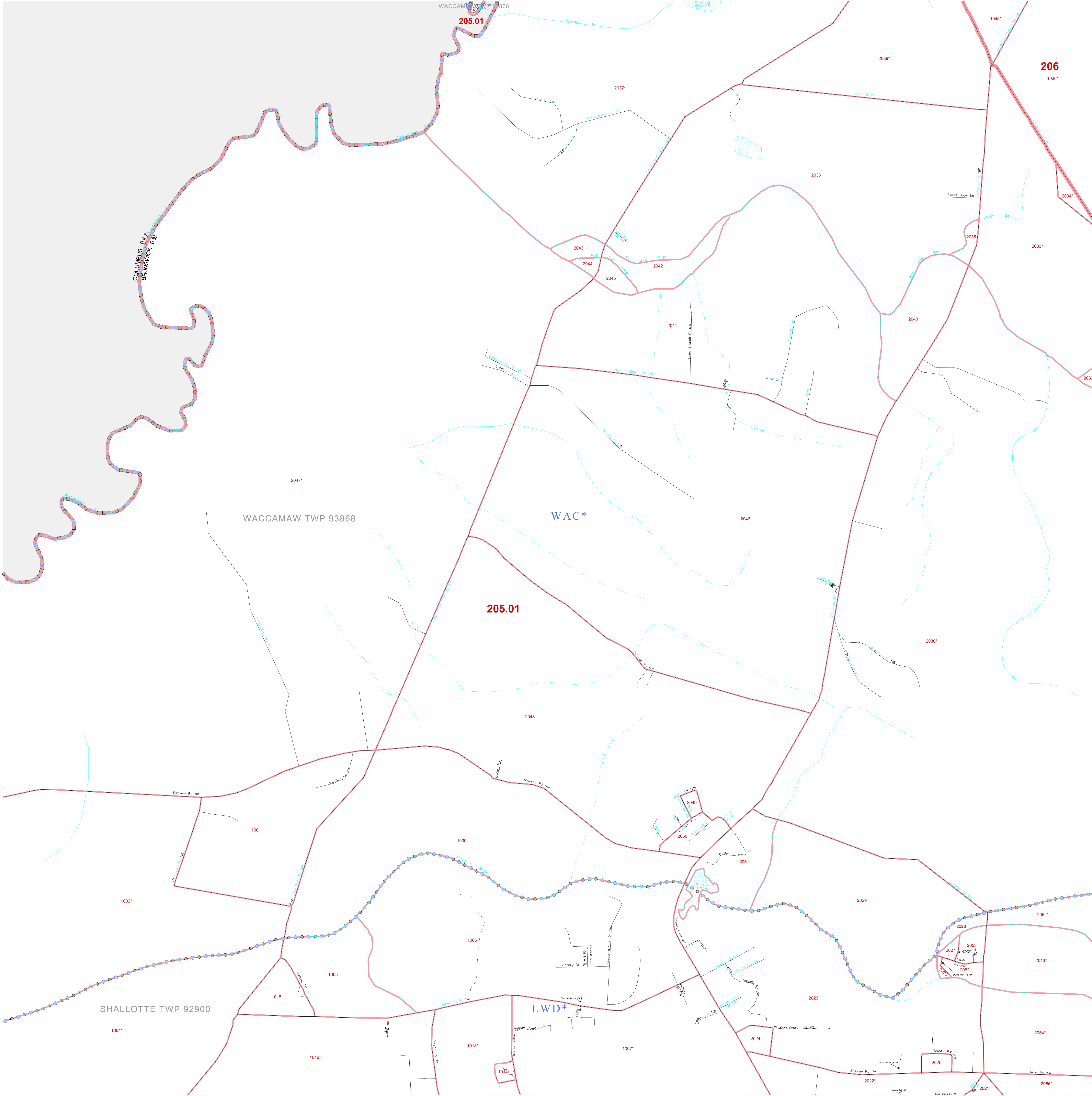


P. L. 94-171 COUNTY BLOCK MAP (CENSUS 2000)

34 062346N  
78 593211W

34 062346N  
78 515233W



**GEOGRAPHIC AREAS LEGEND**

SYMBOL	NAME STYLE
☆☆☆☆	INTERNATIONAL
★☆☆☆	AIR (FEDERAL)
◇◇◇◇◇◇	SDA/SA
◇◇◇◇◇◇	TRIBAL SUBDIVISION
//////	STATE
▣▣▣▣	COUNTY
⊠⊠⊠⊠	MINOR CIVIL DIV.¹
▭▭▭▭	Incorporated Place¹
▭▭▭▭	Census Designated Place¹
-----	Corporate Offset Boundary
●●●●●●	Voting District²
▬▬▬▬	Census Tract
▬▬▬▬	BLOCK³

Abbreviation Reference: AIR = American Indian Reservation; SDA/SA = State Designated American Indian Statistical Area; Tribal Subdivision = American Indian Tribal Subdivision

1 A \* \* following a place name indicates that the place is coterminous with a MCD. A \* \* indicates that the place is also a MCD. In both cases, the MCD name is shown only when it differs from the place name.

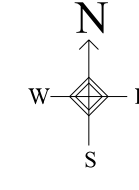
2 A \* \* following a VTD code indicates an actual voting district. Its absence indicates that the VTD is a pseudo voting district or no information is available as to its status.

3 A \* \* following a block number indicates that the block number is repeated elsewhere in the block.

Military: [Symbol] Inset [Symbol] Out Area [Symbol]

33 995938N  
78 593211W

33 995938N  
78 515233W

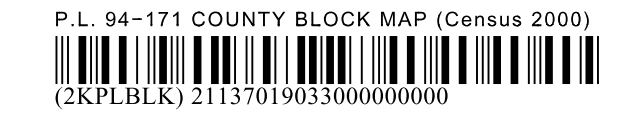


Sheet Location within County

Key to Adjacent Sheets

23	24
32	33
42	43
44	

ST: North Carolina (37)  
COU: Brunswick (019)  
SHEET 33 OF 63 PARENT SHEETS



All legal boundaries and names are as of January 1, 2000. The boundaries shown on this map are for Census Bureau statistical data collection and tabulation purposes only; their depiction and designation for statistical purposes does not constitute a determination of jurisdictional authority or rights of ownership or entitlement. U.S. DEPARTMENT OF COMMERCE Economics and Statistics Administration U.S. Census Bureau