

GEOGRAPHIC AREAS LEGEND

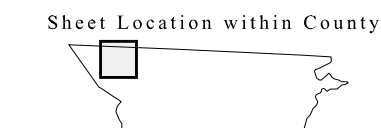
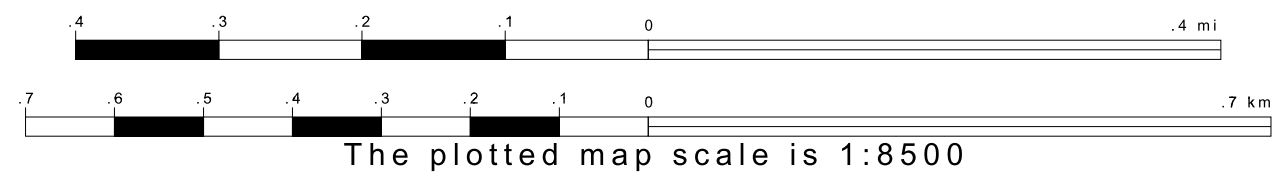
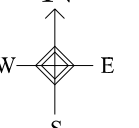
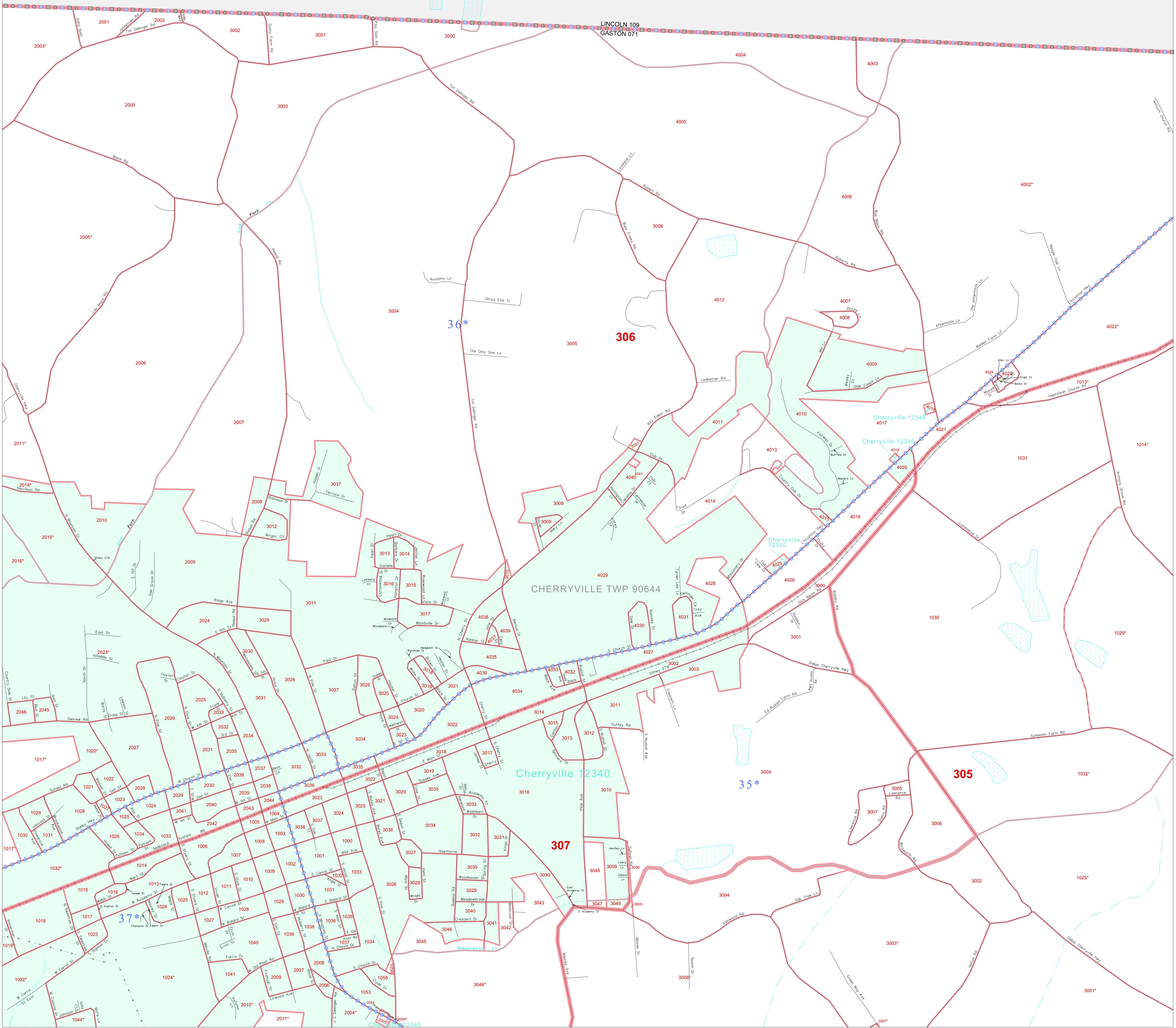
- SYMBOL NAME STYLE
- ***** INTERNATIONAL
- ***** AIR (FEDERAL)
- ***** SDA/ISA
- ***** TRIBAL SUBDIVISION
- ////// STATE
- COUNTY
- ○ ○ ○ ○ MINOR CIVIL DIV.¹
- Incorporated Place¹
- Census Designated Place¹
- Corporate Offset Boundary
- ● ● ● ● Voting District²
- ==== Census Tract
- BLOCK³

Abbreviation Reference: AIR = American Indian Reservation; SDA/ISA = State Designated American Indian Statistical Area; Tribal Subdivision = American Indian Tribal Subdivision

1 A " " following a place name indicates that the place is consistent with a MCD. A " " indicates that the place is also a false MCD. In both cases, the MCD name is shown only when it differs from the place name.

2 A " " following a VTD code indicates an actual voting district. Its absence indicates that the VTD is a pseudo voting district or no information is available as to its status.

3 A " " following a block number indicates that the block number is repeated elsewhere in the block.



Key to Adjacent Sheets

1	2	3
9	10	11

ST: North Carolina (37)
 COU: Gaston (071)
 SHEET 2 OF 33 PARENT SHEETS



All legal boundaries and names are as of January 1, 2000. The boundaries shown on this map are for Census Bureau statistical data collection and tabulation purposes only; their depiction and designation for statistical purposes does not constitute a determination of jurisdictional authority or rights of ownership or entitlement. U.S. DEPARTMENT OF COMMERCE Economics and Statistics Administration U.S. Census Bureau