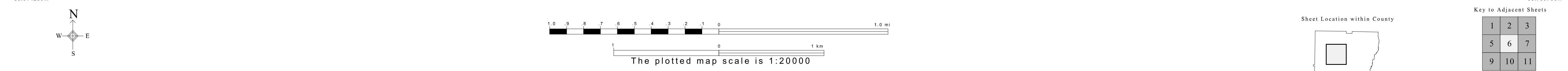
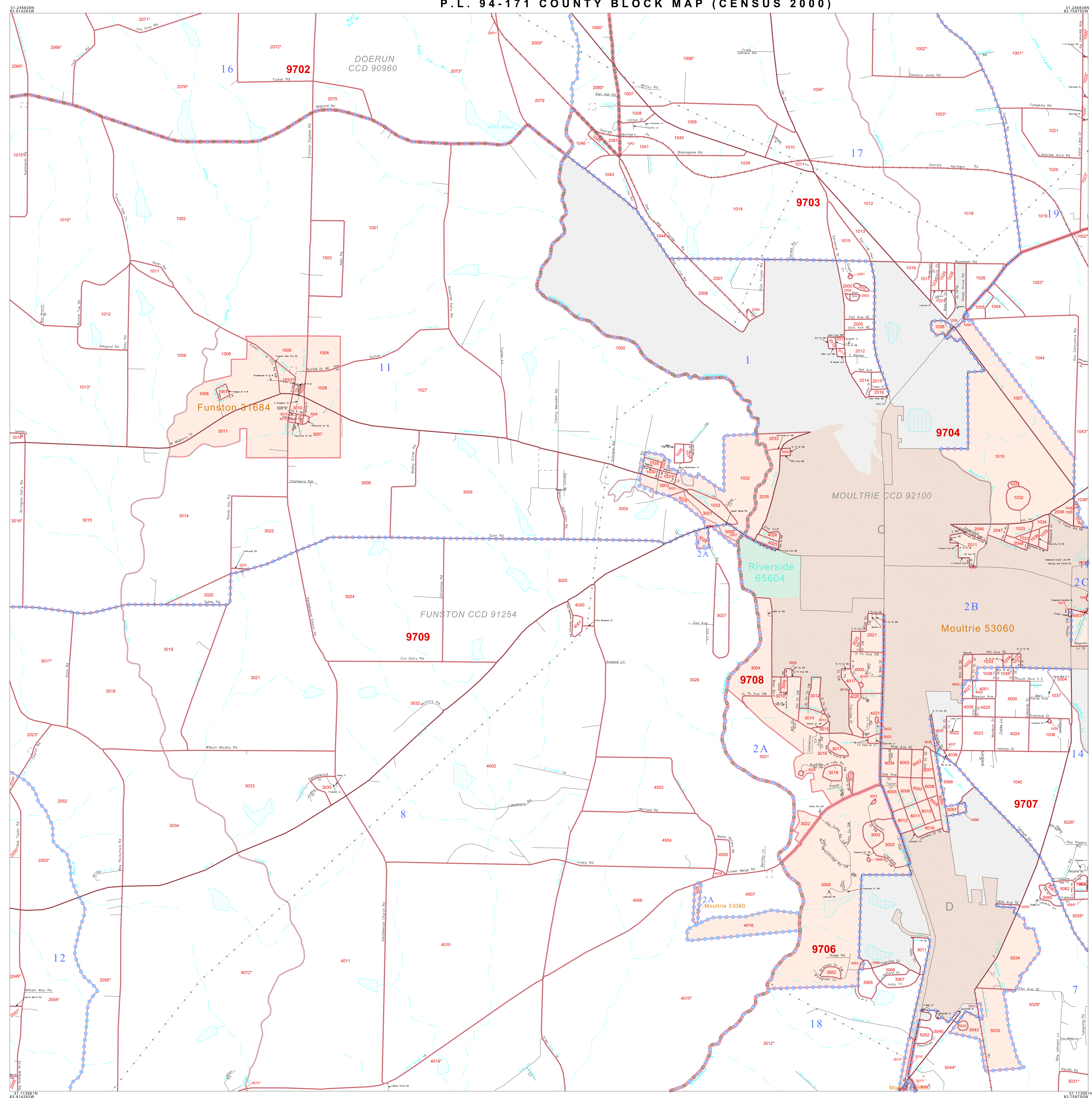


P. L. 94-171 COUNTY BLOCK MAP (CENSUS 2000)

**GEOGRAPHIC AREAS LEGEND**

SYMBOL	NAME STYLE
☆☆☆☆☆	INTERNATIONAL
//////	AIR (State)
	STATE
■■■■■	COUNTY
○○○○○	CENSUS COUNTY DIV. Consolidated City
□□□□□	Incorporated Place
▭	Census Designated Place
.....	Corporate Offset Boundary
.....	Voting District
.....	Census Tract
.....	BLOCK

Abbreviation Reference: AIR = American Indian Reservation  
 1 A \* following a VTD code indicates an actual voting district. Its absence indicates that the VTD is a pseudo voting district or no information is available as to its status.  
 2 A \* \* following a block number indicates that the block number is repeated elsewhere in the block.



All legal boundaries and names are as of January 1, 2000. The boundaries shown on this map are for Census Bureau statistical data collection and tabulation purposes only; their depiction and designation for statistical purposes does not constitute a determination of jurisdictional authority or rights of ownership or entitlement. U.S. DEPARTMENT OF COMMERCE Economics and Statistics Administration U.S. Census Bureau

ST: Georgia (13)  
 COU: Colquitt (071)  
 SHEET 6 OF 12 PARENT SHEETS

P.L. 94-171 COUNTY BLOCK MAP (CENSUS 2000)  
 (CKFLBLK)210150710000000000