

P. L. 94-171 COUNTY BLOCK MAP (CENSUS 2000)

32 109622N  
81.382190W

32 109622N  
81.226339W



**GEOGRAPHIC AREAS LEGEND**

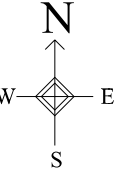
SYMBOL	NAME STYLE
☆☆☆☆	INTERNATIONAL
////	AIR (State)
////	STATE
■■■■	COUNTY
○○○○	CENSUS COUNTY DIV.
○○○○	Consolidated City
■■■■	Incorporated Place
■■■■	Census Designated Place
.....	Corporate Offset Boundary
.....	Voting District
———	Census Tract
———	Block

Military  Inset  Out Area

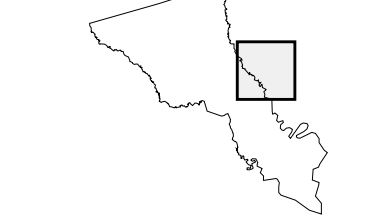
Abbreviation Reference: AIR = American Indian Reservation  
 1 A " " following a VTD code indicates an actual voting district. Its absence indicates that the VTD is a pseudo voting district or no information is available as to its status.  
 2 A " " following a block number indicates that the block number is repeated elsewhere in the block.

31.976961N  
81.382190W

31.976961N  
81.226339W



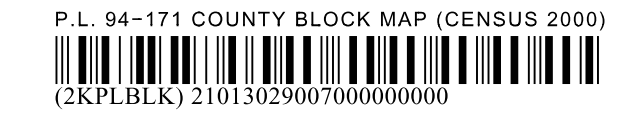
Sheet Location within County



Key to Adjacent Sheets

3	
6	7
9	10 11

ST: Georgia (13)  
 COU: Bryan (029)  
 SHEET 7 OF 13 PARENT SHEETS



All legal boundaries and names are as of January 1, 2000. The boundaries shown on this map are for Census Bureau statistical data collection and tabulation purposes only; their depiction and designation for statistical purposes does not constitute a determination of jurisdictional authority or rights of ownership or entitlement. U.S. DEPARTMENT OF COMMERCE Economics and Statistics Administration U.S. Census Bureau