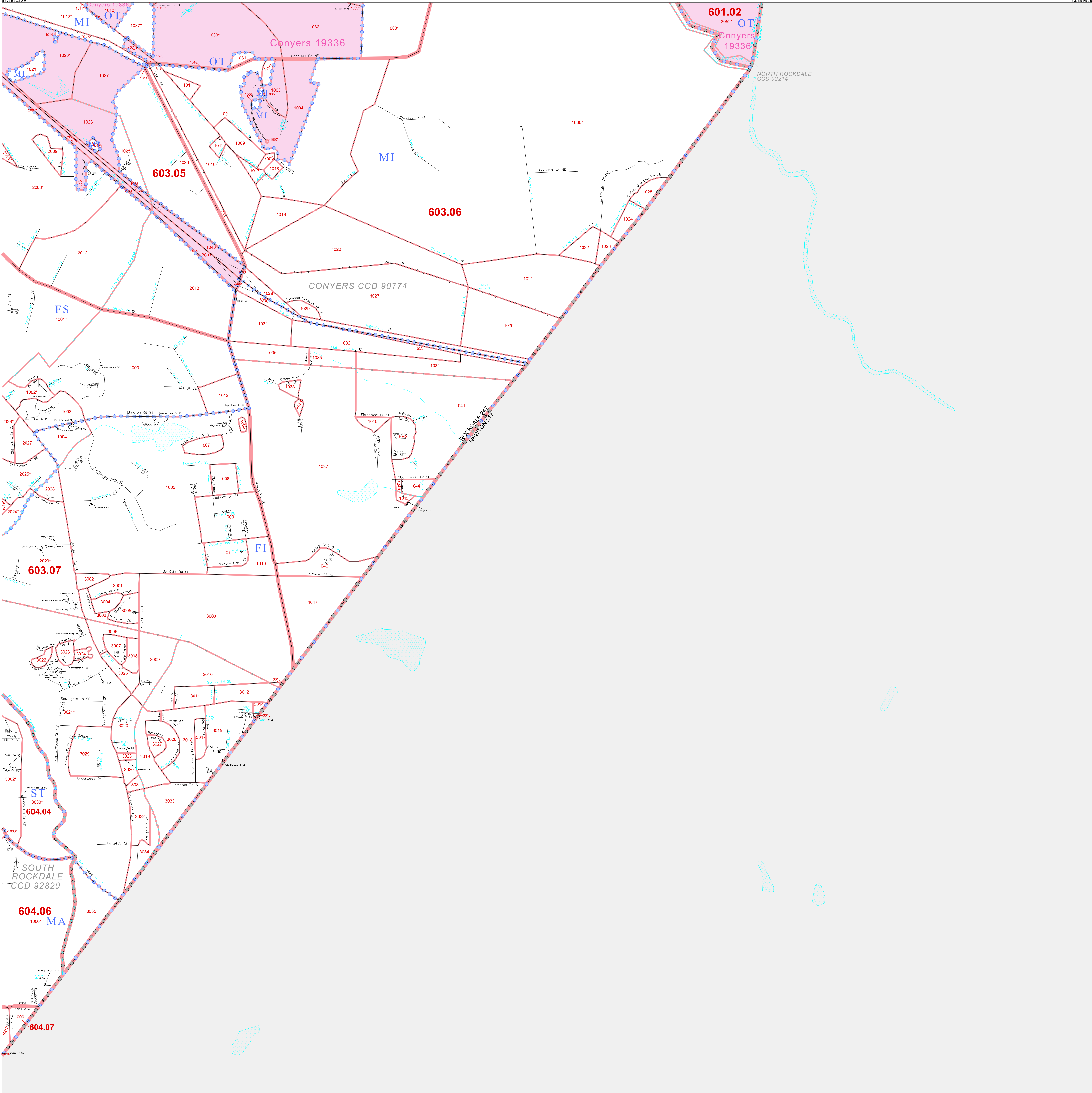


P. L. 94-171 COUNTY BLOCK MAP (CENSUS 2000)

33 856130N  
83.999230W

33 856130N  
83.999230W



**GEOGRAPHIC AREAS LEGEND**

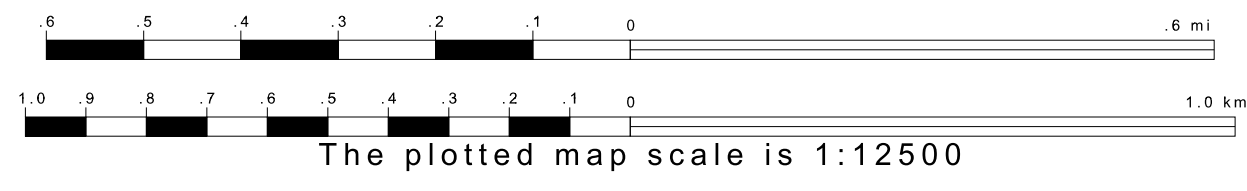
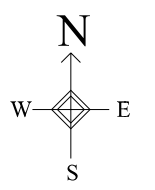
SYMBOL	NAME STYLE
*****	INTERNATIONAL
//////	AIR (State)
//////	STATE
■■■■■	COUNTY
○○○○○	CENSUS COUNTY DIV. Consolidated City
■■■■■	Incorporated Place
■■■■■	Census Designated Place
.....	Corporate Offset Boundary
.....	Voting District
.....	Census Tract
.....	BLOCK <sup>2</sup>

Mosaic:  Inset  Out Area

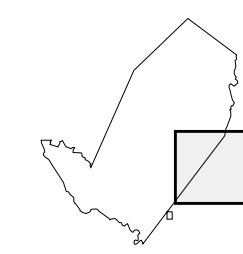
Abbreviation Reference: AIR = American Indian Reservation  
 1 A \* following a VTD code indicates an actual voting district. Its absence indicates that the VTD is a pseudo voting district or no information is available as to its status.  
 2 A \* \* following a block number indicates that the block number is repeated elsewhere in the block.

33 573114N  
83.999230W

33 573114N  
83.999230W



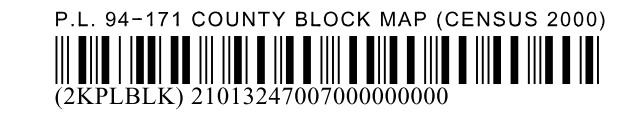
Sheet Location within County



Key to Adjacent Sheets

3	4
6	7
9	

ST: Georgia (13)  
 COU: Rockdale (247)  
 SHEET 7 OF 9 PARENT SHEETS



All legal boundaries and names are as of January 1, 2000. The boundaries shown on this map are for Census Bureau statistical data collection and tabulation purposes only; their depiction and designation for statistical purposes does not constitute a determination of jurisdictional authority or rights of ownership or entitlement. U.S. DEPARTMENT OF COMMERCE Economics and Statistics Administration U.S. Census Bureau