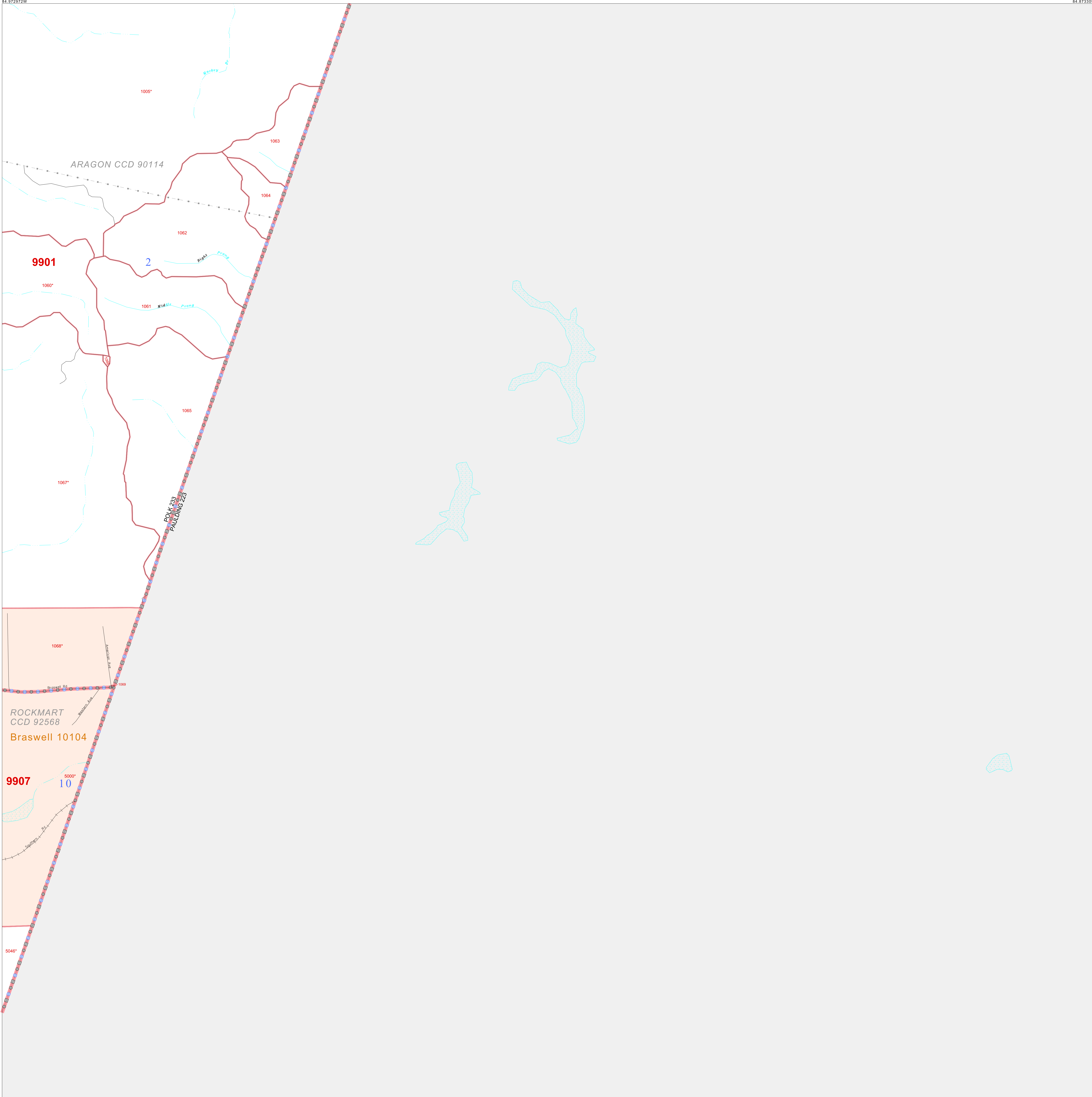


P. L. 94-171 COUNTY BLOCK MAP (CENSUS 2000)

34 041446N
84 972972W

34 041446N
84 973309W



GEOGRAPHIC AREAS LEGEND

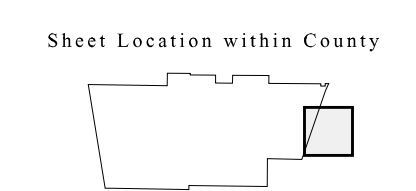
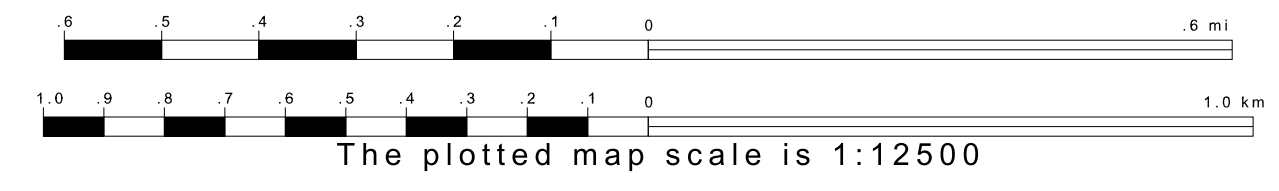
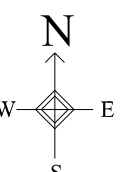
SYMBOL	NAME STYLE
☆☆☆☆☆	INTERNATIONAL
///////	AIR (State)
#####	STATE
■■■■■	COUNTY
○○○○○	CENSUS COUNTY DIV.
○	Consolidated City
■	Incorporated Place
■	Census Designated Place
---	Corporate Offset Boundary
●●●●●	Voting District
—	Census Tract
—	BLOCK ²

Mosaic: Inset Out Area

Abbreviation Reference: AIR = American Indian Reservation
 1 A " " following a VTD code indicates an actual voting district. Its absence indicates that the VTD is a pseudo voting district or no information is available as to its status.
 2 A " " following a block number indicates that the block number is repeated elsewhere in the block.

33 958435N
84 972972W

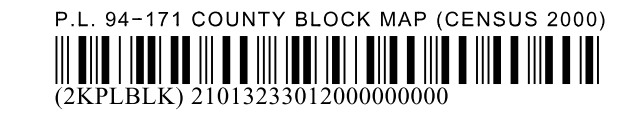
33 958435N
84 973309W



Key to Adjacent Sheets

5	6
11	12
17	

ST: Georgia (13)
 COU: Polk (233)
 SHEET 12 OF 17 PARENT SHEETS



All legal boundaries and names are as of January 1, 2000. The boundaries shown on this map are for Census Bureau statistical data collection and tabulation purposes only; their depiction and designation for statistical purposes does not constitute a determination of jurisdictional authority or rights of ownership or entitlement. U.S. DEPARTMENT OF COMMERCE Economics and Statistics Administration U.S. Census Bureau