

P. L. 94-171 COUNTY BLOCK MAP (CENSUS 2000)

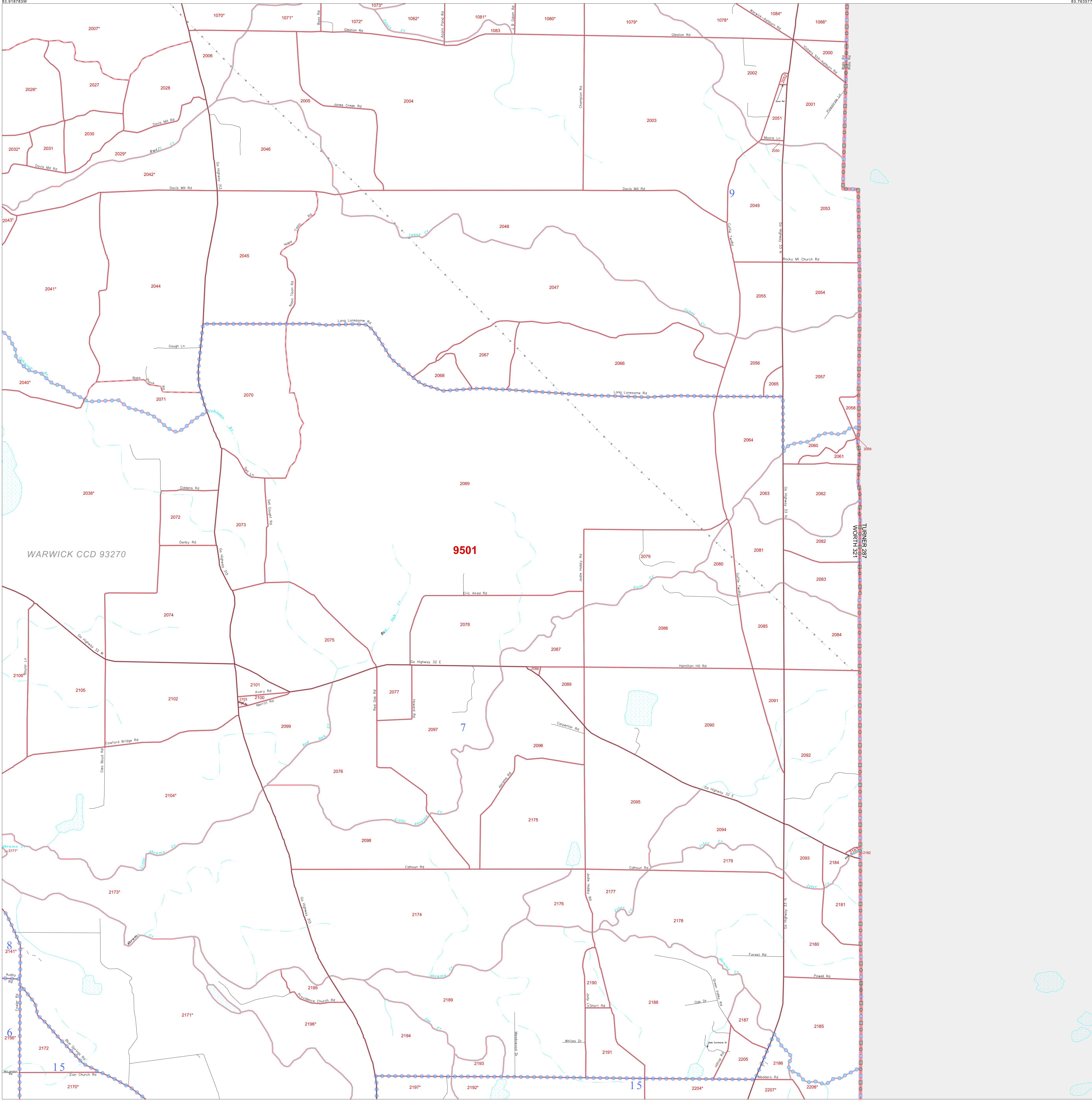
31 763291N
83.918753W

31 763291N
83.763577W

GEOGRAPHIC AREAS LEGEND

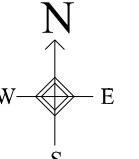
SYMBOL	NAME STYLE
☆☆☆☆	INTERNATIONAL
////	AIR (State)
////	STATE
■ ■ ■ ■	COUNTY
○ ○ ○ ○	CENSUS COUNTY DIV. Consolidated City
■ ■ ■ ■	Incorporated Place
■ ■ ■ ■	Census Designated Place
.....	Corporate Offset Boundary
.....	Voting District
.....	Census Tract
.....	BLOCK ²

Abbreviation Reference: AIR = American Indian Reservation
 1 A " " following a VTD code indicates an actual voting district. Its absence indicates that the VTD is a pseudo voting district or no information is available as to its status.
 2 A " " following a block number indicates that the block number is repeated elsewhere in the block.

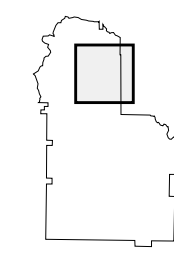


31 650421N
83.918753W

31 650421N
83.763577W



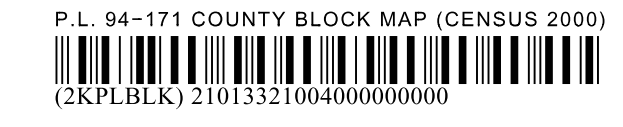
Sheet Location within County



Key to Adjacent Sheets

1	2
3	4
5	6
	7

ST: Georgia (13)
 COU: Worth (321)
 SHEET 4 OF 13 PARENT SHEETS



All legal boundaries and names are as of January 1, 2000.
 The boundaries shown on this map are for Census Bureau statistical data collection and tabulation purposes only; their depiction and designation for statistical purposes does not constitute a determination of jurisdictional authority or rights of ownership or entitlement.
 U.S. DEPARTMENT OF COMMERCE Economics and Statistics Administration U.S. Census Bureau