

P. L. 94-171 COUNTY BLOCK MAP (CENSUS 2000)

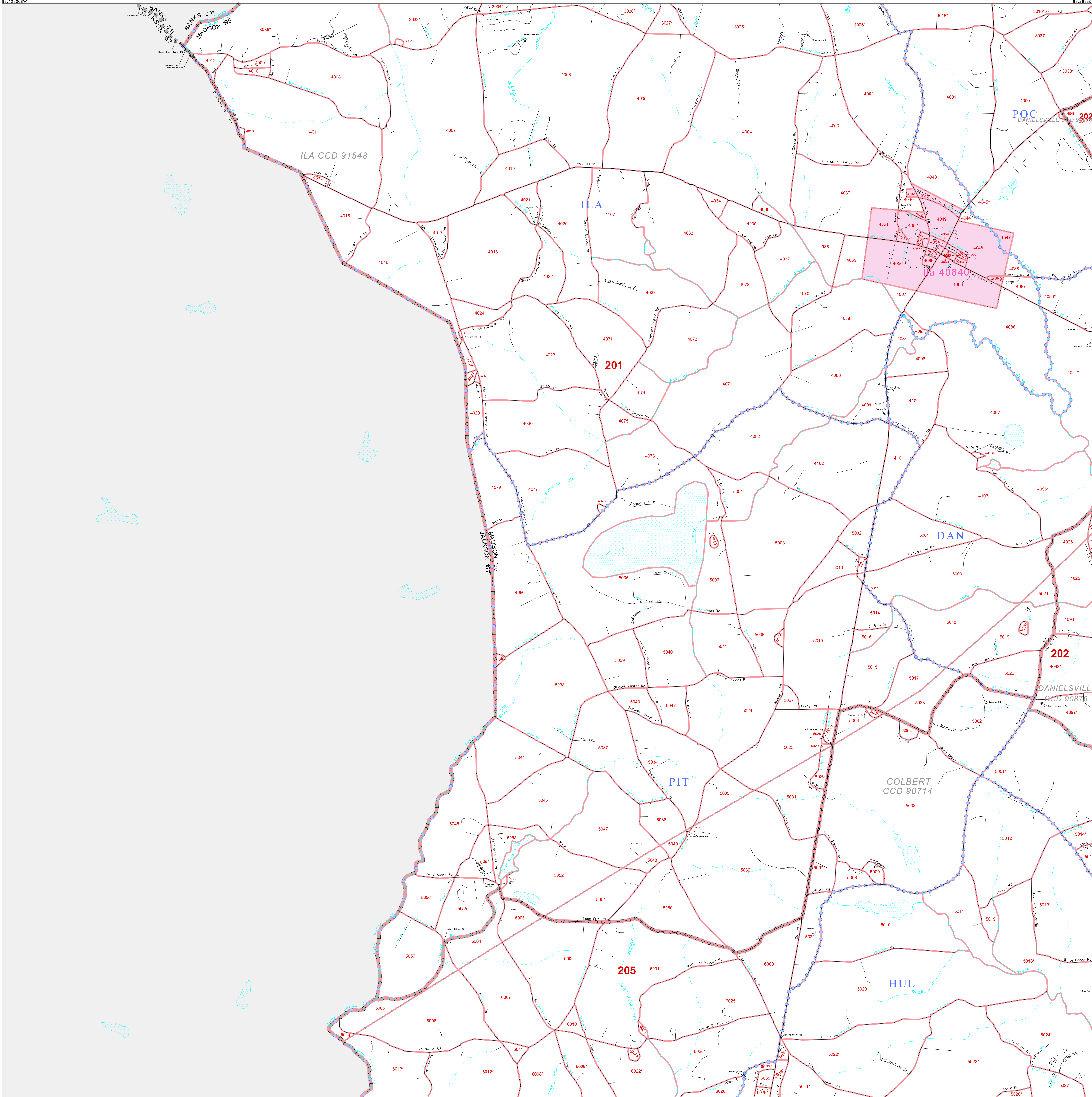
34 202690N  
83 429066W

34 202690N  
83 289322W

GEOGRAPHIC AREAS LEGEND

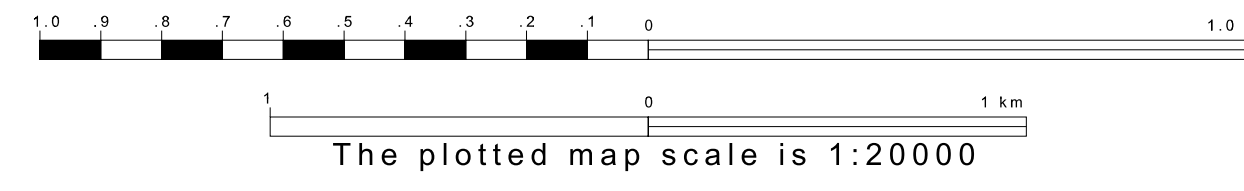
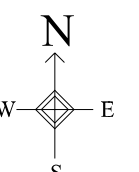
- | SYMBOL | NAME STYLE                              |
|--------|---|
| ☆☆☆☆   | INTERNATIONAL                           |
| ////   | AIR (State)                             |
|        | STATE                                   |
| ▣      | COUNTY                                  |
| ○      | CENSUS COUNTY DIV.<br>Consolidated City |
| ■      | Incorporated Place                      |
| ■      | Census Designated Place                 |
| —      | Corporate Offset Boundary               |
| ⋯      | Voting District                         |
| —      | Census Tract                            |
| —      | BLOCK <sup>2</sup>                      |

Abbreviation Reference: AIR = American Indian Reservation  
 1 A \* following a VTD code indicates an actual voting district. Its absence indicates that the VTD is a pseudo voting district or no information is available as to its status.  
 2 A \* \* following a block number indicates that the block number is repeated elsewhere in the block.

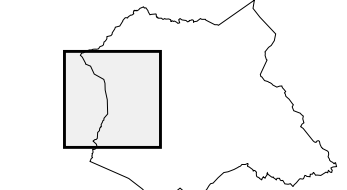


34 089850N  
83 429066W

34 089850N  
83 289322W



Sheet Location within County



Key to Adjacent Sheets

1	2
4	5
7	8

ST: Georgia (13)  
 COU: Madison (195)  
 SHEET 4 OF 9 PARENT SHEETS



All legal boundaries and names are as of January 1, 2000. The boundaries shown on this map are for Census Bureau statistical data collection and tabulation purposes only; their depiction and designation for statistical purposes does not constitute a determination of jurisdictional authority or rights of ownership or entitlement. U.S. DEPARTMENT OF COMMERCE Economics and Statistics Administration U.S. Census Bureau