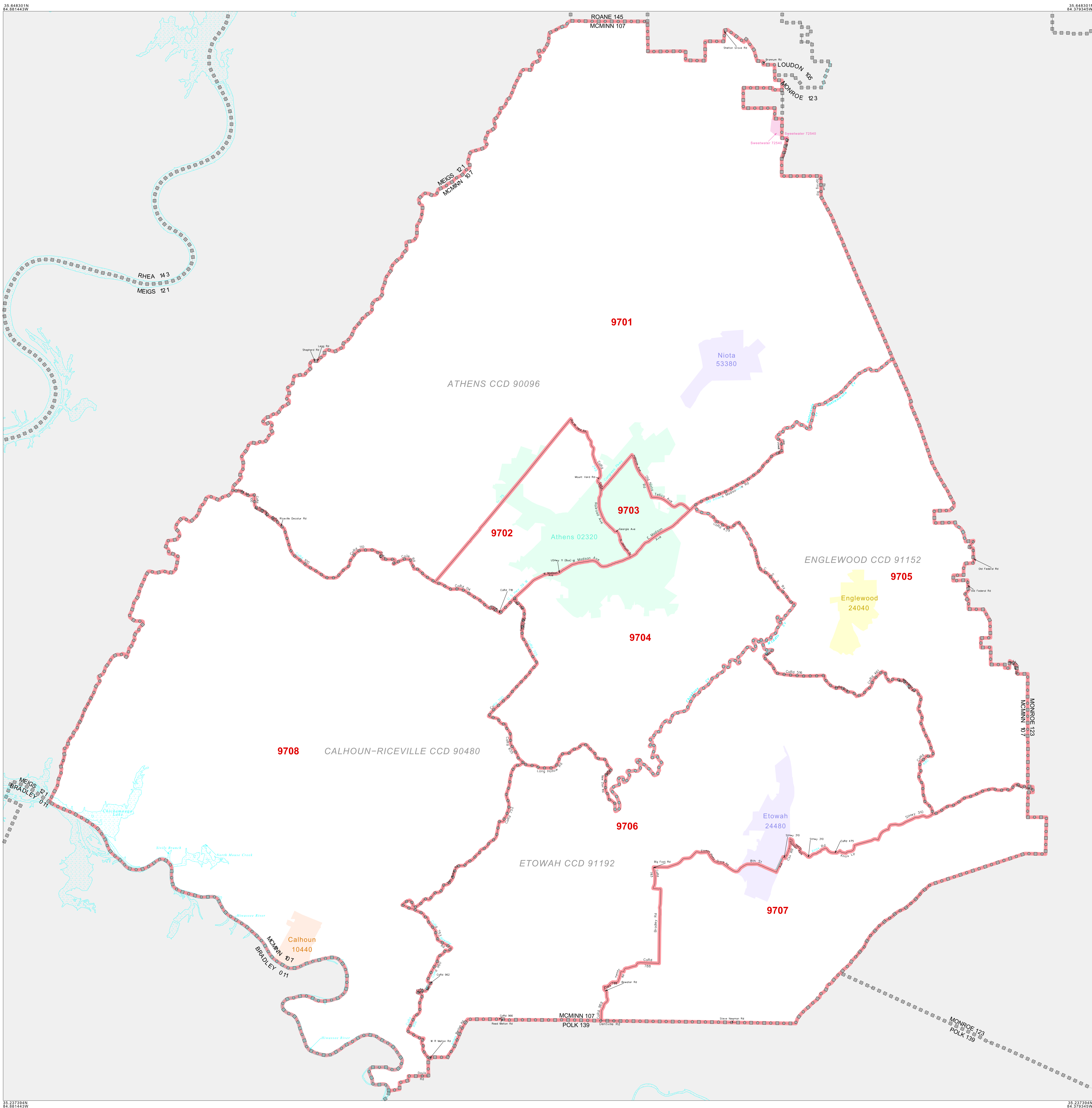


CENSUS TRACT OUTLINE MAP (CENSUS 2000)



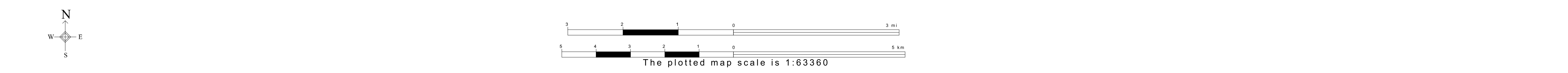
ABBREVIATED LEGEND

SYMBOL	NAME STYLE
*****	INTERNATIONAL
*****	AIR (FEDERAL)
*****	Trust Land
*****	OTSA / TDSA
*****	TRIBAL SUBDIVISION
*****	AIR (State)
*****	SDA/SA
*****	STATE
*****	COUNTY
*****	CENSUS COUNTY DIV.
*****	Consolidated City
*****	Incorporated Place
*****	Census Designated Place
*****	Census Tract

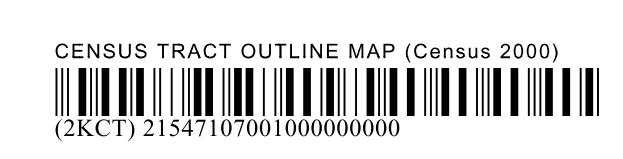
Abbreviation Reference: AIR - American Indian Reservation; Trust Land - OTS - Oklahoma Tribal Statistical Area; TDSA - Tribal Designated Statistical Area; Tribal Subdivision - American Indian Tribal Subdivision; SDA/SA - State Designated American Indian Statistical Area

FEATURES	FEATURES
All Roads	Stream/Shareline
Epiroad	Intermittent Stream
Flow/Power Line	River/Lake
Physical Feature	Glacier
Navigable Boundary	
Military	

Inset Out Area



ST: Tennessee (47)
 COU: McMinn (107)
 SHEET 1 OF 1 PARENT SHEET



All legal boundaries and names are as of January 1, 2000. The boundaries shown on this map are for Census Bureau statistical data collection and tabulation purposes only; their depiction and designation for statistical purposes does not constitute a determination of jurisdictional authority or rights of ownership or entitlement. U.S. DEPARTMENT OF COMMERCE Economics and Statistics Administration U.S. Census Bureau