

## ACCIDENT REPORT

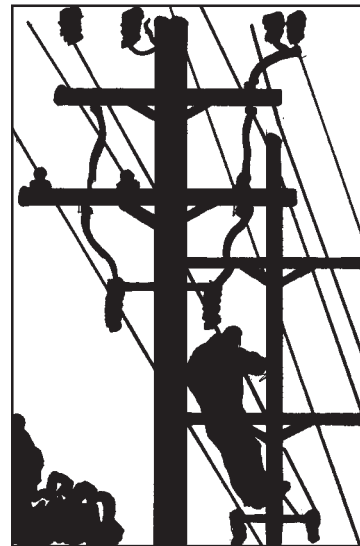
# DISASTER FACTS



• U.S. Department of Labor • Occupational Safety and Health Administration • Kansas City Region VII No. 71

### ACCIDENT SUMMARY

Accident Type: ..... Electrocutation from Overhead Power line  
Weather Conditions: ..... Clear and cool  
Type of Operation: ..... Electric utility storm damage repair  
(transformer and pole replacement)  
Size of Work Crew: ..... 6  
Union or Non-Union: ..... Union  
Worksite inspection conducted: ..... Yes  
Competent safety monitoring on-site: ..... Yes  
Safety and Health Program in effect: ..... Yes  
Training and education for employees: ..... Yes (4 year craft apprenticeship  
program, OJT)  
Craft of employees: ..... Journeyman lineman  
Age/Sex: ..... 27/Male  
Time on job: ..... 4 years (as qualified lineman)  
Time at task: ..... 7 hours



### BRIEF DESCRIPTION OF ACCIDENT

Two journey linemen were belted-off to a new replacement utility pole and were transferring lines and equipment from an old, storm-damaged pole. To avoid interrupting power to residential customers, the linemen had attached a coiled, flexible jumper cable between the old transformer and the primary power line (energized at 2,400 Volts, phase to ground), then moved the primary line from the top of the old pole to the top of the new pole. After transferring the primary line the two linemen removed their rubber insulating gloves and sleeves. One lineman then changed position on the new pole and his left outer thigh contacted the energized jumper cable at or near its connection point to the old transformer. He became grounded through his leather-gloved hands which were in contact with the ground wire on the old pole and sustained a fatal electrical shock.

### ACCIDENT PREVENTION RECOMMENDATIONS

1. Ensure that pre-job briefings are held with all employees that cover, at a minimum, the hazards associated with job, the work procedures involved, special precautions (such as using rubber insulating blankets to cover energized lines and parts), energy source controls, and personal protective equipment requirements.
2. Ensure that employees working in proximity to exposed energized lines and parts maintain at all times the minimum approach distance appropriate for the conditions and voltage present.
3. Ensure that employees working on utility poles only work from positions where a slip or a shock will not bring their body into contact with hazardous voltages.

### SOURCES OF HELP

- OSHA Standards, regulations, documents and technical information are available on the Internet World Wide web at: <http://www.OSHA.gov/>. That information also is on CD-ROM, which may be purchased from the Government Printing Office, phone (202) 512-1800 or fax (202) 512-2250, Order No.729-13-00000-5; Cost \$79 annually; \$28 quarterly.
- For hard copies of OSHA Construction Standards [29 CFR Part 1926], which include all OSHA job safety and health
- rules and regulation covering construction, contact Government Printing Office, phone (202) 512-1800, fax (202) 512-2250, order number 869-022-00114-1, \$33.
- OSHA-funded free consultation services listed in telephone directories under U.S. Labor Department or under the state government section where states administer their own OSHA programs.
- OSHA Safety and Health Training Guidelines for Construction, Volume III (Available from the National Technical
- Information Service, 5285 Port Royal Road, Springfield, VA 22161; phone (703) 487-4650; Order No. PB-239-312/AS. \$25 to help construction employers establish a training program.
- Courses in construction safety are offered by the OSHA Training Institute, 1555 Times Drive, Des Plaines, IL 60018, (847) 297-4810, and the Metropolitan Community Colleges Business & Technology Center, 6899 Executive Drive, Kansas City, MO 64120, (816) 482 5210.

Note: This case described was selected as being representative of improper work practices which likely contributed to a fatality from a fall and/or electrocution. The accident prevention recommendations do not necessarily reflect the outcome of the legal aspects of the incident case. Your company or organization is eligible to receive one free copy of this leaflet which you may duplicate and share with your co-workers. To be placed on the distribution list, send your name, title and address to: U.S. Department of Labor-OSHA, 1100 Main, Suite 800, Kansas City, MO 64105, Attn. TECFAP, or e-mail to [cynthia.dearing@osha.gov](mailto:cynthia.dearing@osha.gov).