

# American Community Survey

## 2004 Geography Notes

## Table of Contents

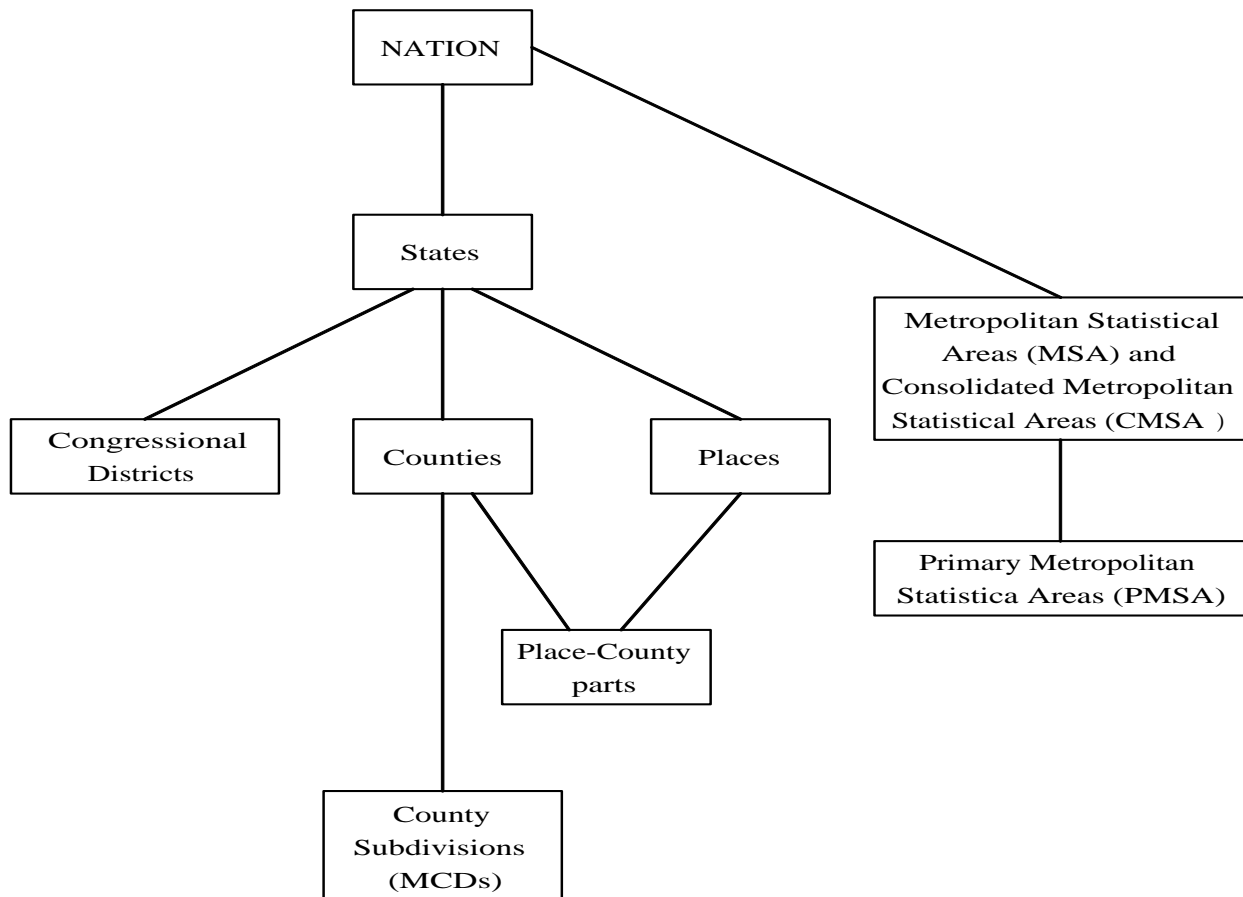
Overlapping Geographic Summary Levels.....	3
Metropolitan Statistical Areas.....	7
Geographic Areas for Which Data Are Available .....	23
Equivalent Geographies .....	59
Glossary of Geographic Terms .....	67

## The American Community Survey

The 2004 American Community Survey data includes single-year estimates for areas of 250,000 or more household population, and Change Profiles for all states, and areas with a household population of 1 million or more.<sup>1,2</sup> The list of areas to publish was based on the Census Bureau's July 1, 2004 Population Estimates.

Data are reported for common political divisions, such as states, counties, places and metropolitan statistical areas.<sup>3</sup> This document contains an abbreviated explanation of the Census Bureau's geographic hierarchy, and some of the more common terms, to get you started using data from the American Community Surveys. The geographic base for these data is January 1, 2004.

Not all levels of geography are represented in the American Community Survey data products. The following diagram shows the portions of the Census Bureau's geographic hierarchy that are included in the 2004 American Community Survey data products.



Data are available for the following geographic summary levels:

Summary Level		Number of areas published				
		2000	2001	2002	2003	2004
001	ACS Test Site	21	21	21	21	21
010	Nation	1	1	1	1	1
040	State	51	51	51	51	51
050	County	224	228	241	241	244
060	County Subdivision (MCD)	29	30	14	14	15
155	Place-County	68	70	74	74	73
160	Place	80	80	88	88	89
380	Metropolitan Statistical Area (MSA) / Consolidated Metropolitan Statistical Area (CMSA)	113	113	116	116	117
385	CMSA / Primary Metropolitan Statistical Area (PMSA)	46	48	50	50	50
500	Congressional District <sup>4</sup>	211	211	206	206	203

### Overlapping Geographic Summary Levels

Some geographies may appear under multiple summary levels. For example, Bronx, New York is shown under the following summary levels:

- |                                |                                 |
|--------------------------------|---------------------------------|
| 050 - County                   | Bronx County                    |
| 060 - County subdivision (MCD) | Bronx borough                   |
| 155 - Place-County             | New York city, Bronx County pt. |

## User Notes

Geographic areas published by the American Community Survey (ACS) can be divided into ACS Test Sites (see note below) and the remaining ACS areas (see note below). Thresholds for publishing a geographic area are:

	<b>Single Year Estimates</b>	<b>Change Estimates</b>
<b>Test Sites</b>	<b>65,000</b>	<b>250,000</b>
<b>Remaining Areas</b>	<b>250,000</b>	<b>1,000,000</b>

1. Data collected in the American Community Survey Test Sites were sampled at a higher rate. Single year estimates are produced for geographic areas with a household population of 65,000 or more. Change estimates are produced for geographic areas with a household population of 250,000 or more.

### 1999-2004 American Community Survey Test Sites

Jefferson County, AR	Douglas County, NE
Pima County, AZ	Otero County, NM*
San Francisco County, CA	Bronx County, NY
Tulare County, CA	Rockland County, NY
Upson County, GA*	Franklin County, OH
Broward County, FL	Multnomah County, OR
Black Hawk County, IA	Fulton County, PA*
Lake County, IL	Schuylkill County, PA
Miami County, IN*	Sevier County, TN
DeSoto Parish, LA*	Fort Bend and Harris Counties, TX
Hampden County, MA	Starr and Zapata Counties, TX
Calvert County, MD	Petersburg, VA*
Iron, Reynolds, and Washington Counties, MO*	Yakima County, WA
Madison County, MS	Oneida and Vilas Counties, WI*
Flathead and Lake Counties, MT	Ohio County, WV

\*\* Test Sites with household populations of less than 65,000

2. Data for the remaining American Community Survey areas are available for geographies that are *wholly contained within self-representing Primary Sampling Units*. PSU is short for primary sampling unit. It is a county or a group of counties that are treated as a single sample unit. Each PSU falls within the boundary of a state.

The American Community Survey uses a two-stage sample of housing units for those areas. The first stage of sampling divides the state into PSUs and selects a sample of these PSUs. Then, the final (second stage) sample of housing units is taken from the chosen PSUs. Certain PSUs (roughly, those with an estimated population of 250,000 or more) are designated as "self-representing" (SR). The remaining PSUs are referred to as "non-self representing" (NSR). The NSR PSUs are grouped into clusters and only two are chosen to represent all of the PSUs in the cluster. In the final sample, housing units are taken from all the SR PSUs and only the two selected NSR PSUs.

For more information on PSU definition and selection for sample, see the "Accuracy of the data" section on the Census Supplementary Survey website – <http://www.census.gov/acs/www/UseData/Accuracy/Accuracy1.htm>

3. Metropolitan areas are defined as of June 30, 1999.
4. 2000 and 2001 data were published for the 106<sup>th</sup> Congressional Districts; 2002 and 2003 data are published for the 108<sup>th</sup> Congressional Districts.
5. Ranking Products are created and released for entities within the following geographic summary levels with a population of 250,000 or more:

040	State
050	County
160	Place

The estimate for the United States is included as a reference point in all state rank products. These products were created for 233 of the 244 counties and 68 of the 89 places for 2004, except when a threshold was applied to a particular characteristic of a ranking product.

6. Thresholds have been set to ensure that the estimates are statistically reliable. Listed below are the threshold criterion which will determine which estimates will be released for each of the geographic areas with the population exceeding 65,000 for the ACS Sites and 250,000 for the remaining ACS areas. Both of the criterion must be met in order to be released to the public:
  - The weighted table universe count must be greater than or equal to 500 for the ACS Sites or 2500 for the remaining ACS geographic areas.
  - The un-weighted count of the records which satisfy the table universe must be at least double the number of cells in the table, excluding total and sub-total cells, i.e. the average cell size must be at least two.

## Differences in Geographic Areas Published in 2003 and 2004

### ACS Areas Dropped

<b>Year</b>	<b>Name of Area</b>
2003	Louisville city , KY
2003	TX Congressional District 8
2003	TX Congressional District 10
2003	TX Congressional District 12
2003	TX Congressional District 25

### ACS Areas Added

<b>Year</b>	<b>Name of Area</b>
2004	Bell County , TX
2004	Ottawa County , MI
2004	Lake County , FL
2004	Avon township, IL
2004	Missouri City city, TX
2004	Louisville-Jefferson County city , KY
2004	Portland, ME MSA
2004	TX Congressional District 2

## Metropolitan Statistical Areas

The table below shows all current Metropolitan Statistical Areas (MSA), Consolidated Metropolitan Statistical Areas (CMSA), and Primary Metropolitan Statistical Areas (PMSA) in the United States. The shaded rows indicate metropolitan areas which cannot be published from the 2003 American Community Survey.

MSA-CMSA code	PMSA code	MSA, CMSA, or PMSA Name	2000	2001	2002	2003	2004	2004 Change Profiles 2000-2004
0040		Abilene, TX MSA						
0120		Albany, GA MSA						
0160		Albany--Schenectady--Troy, NY MSA	Yes	Yes	Yes	Yes	Yes	
0200		Albuquerque, NM MSA						
0220		Alexandria, LA MSA						
0240		Allentown--Bethlehem--Easton, PA MSA	Yes	Yes	Yes	Yes	Yes	
0280		Altoona, PA MSA						
0320		Amarillo, TX MSA						
0380		Anchorage, AK MSA	Yes	Yes	Yes	Yes	Yes	
0450		Anniston, AL MSA						
0460		Appleton--Oshkosh--Neenah, WI MSA	Yes	Yes	Yes	Yes	Yes	
0480		Asheville, NC MSA						
0500		Athens, GA MSA						
0520		Atlanta, GA MSA	Yes	Yes	Yes	Yes	Yes	Yes
0580		Auburn--Opelika, AL MSA						
0600		Augusta--Aiken, GA--SC MSA	Yes	Yes	Yes	Yes	Yes	
0640		Austin--San Marcos, TX MSA	Yes	Yes	Yes	Yes	Yes	Yes
0680		Bakersfield, CA MSA	Yes	Yes		Yes	Yes	



MSA-CMSA code	PMSA code	MSA, CMSA, or PMSA Name	2000	2001	2002	2003	2004	2004 Change Profiles 2000-2004
0730		Bangor, ME MSA						
0740		Barnstable--Yarmouth, MA MSA						
0760		Baton Rouge, LA MSA	Yes	Yes	Yes	Yes	Yes	
0840		Beaumont--Port Arthur, TX MSA	Yes	Yes	Yes	Yes	Yes	
0860		Bellingham, WA MSA						
0870		Benton Harbor, MI MSA						
0880		Billings, MT MSA						
0920		Biloxi--Gulfport--Pascagoula, MS MSA	Yes	Yes		Yes	Yes	
0960		Binghamton, NY MSA			Yes	Yes	Yes	
1000		Birmingham, AL MSA	Yes	Yes	Yes	Yes	Yes	
1010		Bismarck, ND MSA						
1020		Bloomington, IN MSA						
1040		Bloomington--Normal, IL MSA						
1080		Boise City, ID MSA	Yes	Yes	Yes	Yes	Yes	
1122		Boston--Worcester--Lawrence, MA--NH--ME--CT CMSA	Yes	Yes	Yes	Yes	Yes	Yes
1122	1120	Boston, MA--NH PMSA	Yes	Yes	Yes	Yes	Yes	Yes
1122	1200	Brockton, MA PMSA		Yes	Yes	Yes	Yes	
1122	2600	Fitchburg--Leominster, MA PMSA						
1122	4160	Lawrence, MA--NH PMSA	Yes	Yes	Yes	Yes	Yes	
1122	4560	Lowell, MA--NH PMSA	Yes	Yes	Yes	Yes	Yes	
1122	4760	Manchester, NH PMSA						
1122	5350	Nashua, NH PMSA						
1122	5400	New Bedford, MA PMSA						

MSA-CMSA code	PMSA code	MSA, CMSA, or PMSA Name	2000	2001	2002	2003	2004	2004 Change Profiles 2000-2004
1122	6450	Portsmouth--Rochester, NH--ME PMSA				Yes	Yes	
1122	9240	Worcester, MA--CT PMSA	Yes	Yes	Yes	Yes	Yes	
1240		Brownsville--Harlingen--San Benito, TX MSA	Yes	Yes	Yes	Yes	Yes	
1260		Bryan--College Station, TX MSA						
1280		Buffalo--Niagara Falls, NY MSA	Yes	Yes	Yes	Yes	Yes	Yes
1305		Burlington, VT MSA						
1320		Canton--Massillon, OH MSA	Yes	Yes	Yes	Yes	Yes	
1350		Casper, WY MSA						
1360		Cedar Rapids, IA MSA						
1400		Champaign--Urbana, IL MSA						
1440		Charleston--North Charleston, SC MSA	Yes	Yes	Yes	Yes	Yes	
1480		Charleston, WV MSA						
1520		Charlotte--Gastonia--Rock Hill, NC--SC MSA						
1540		Charlottesville, VA MSA						
1560		Chattanooga, TN--GA MSA						
1580		Cheyenne, WY MSA						
1602		Chicago--Gary--Kenosha, IL--IN--WI CMSA						
1602	1600	Chicago, IL PMSA	Yes	Yes	Yes	Yes	Yes	Yes
1602	2960	Gary, IN PMSA						
1602	3740	Kankakee, IL PMSA						
1602	3800	Kenosha, WI PMSA						
1620		Chico--Paradise, CA MSA						
1642		Cincinnati--Hamilton, OH--KY--IN CMSA						

MSA-CMSA code	PMSA code	MSA, CMSA, or PMSA Name	2000	2001	2002	2003	2004	2004 Change Profiles 2000-2004
1642	1640	Cincinnati, OH--KY--IN PMSA						
1642	3200	Hamilton--Middletown, OH PMSA	Yes	Yes	Yes	Yes	Yes	
1660		Clarksville--Hopkinsville, TN--KY MSA						
1692		Cleveland--Akron, OH CMSA	Yes	Yes	Yes	Yes	Yes	Yes
1692	0080	Akron, OH PMSA	Yes	Yes	Yes	Yes	Yes	
1692	1680	Cleveland--Lorain--Elyria, OH PMSA	Yes	Yes	Yes	Yes	Yes	Yes
1720		Colorado Springs, CO MSA	Yes	Yes	Yes	Yes	Yes	
1740		Columbia, MO MSA						
1760		Columbia, SC MSA	Yes	Yes	Yes	Yes	Yes	
1800		Columbus, GA--AL MSA						
1840		Columbus, OH MSA						
1880		Corpus Christi, TX MSA	Yes	Yes	Yes	Yes	Yes	
1890		Corvallis, OR MSA						
1900		Cumberland, MD--WV MSA						
1922		Dallas--Fort Worth, TX CMSA	Yes	Yes	Yes	Yes	Yes	Yes
1922	1920	Dallas, TX PMSA	Yes	Yes	Yes	Yes	Yes	Yes
1922	2800	Fort Worth--Arlington, TX PMSA	Yes	Yes	Yes	Yes	Yes	Yes
1950		Danville, VA MSA						
1960		Davenport--Moline--Rock Island, IA--IL MSA	Yes	Yes	Yes	Yes	Yes	
2000		Dayton--Springfield, OH MSA	Yes	Yes	Yes	Yes	Yes	
2020		Daytona Beach, FL MSA	Yes	Yes	Yes	Yes	Yes	
2030		Decatur, AL MSA						
2040		Decatur, IL MSA						

MSA-CMSA code	PMSA code	MSA, CMSA, or PMSA Name	2000	2001	2002	2003	2004	2004 Change Profiles 2000-2004
2082		Denver--Boulder--Greeley, CO CMSA						
2082	1125	Boulder--Longmont, CO PMSA	Yes	Yes	Yes	Yes	Yes	
2082	2080	Denver, CO PMSA	Yes	Yes	Yes	Yes	Yes	Yes
2082	3060	Greeley, CO PMSA						
2120		Des Moines, IA MSA	Yes	Yes	Yes	Yes	Yes	
2162		Detroit--Ann Arbor--Flint, MI CMSA	Yes	Yes	Yes	Yes	Yes	Yes
2162	0440	Ann Arbor, MI PMSA	Yes	Yes	Yes	Yes	Yes	
2162	2160	Detroit, MI PMSA	Yes	Yes	Yes	Yes	Yes	Yes
2162	2640	Flint, MI PMSA	Yes	Yes	Yes	Yes	Yes	
2180		Dothan, AL MSA						
2190		Dover, DE MSA						
2200		Dubuque, IA MSA						
2240		Duluth--Superior, MN--WI MSA						
2290		Eau Claire, WI MSA						
2320		El Paso, TX MSA	Yes	Yes	Yes	Yes	Yes	
2330		Elkhart--Goshen, IN MSA						
2335		Elmira, NY MSA						
2340		Enid, OK MSA						
2360		Erie, PA MSA	Yes	Yes	Yes	Yes	Yes	
2400		Eugene--Springfield, OR MSA	Yes	Yes	Yes	Yes	Yes	
2440		Evansville--Henderson, IN--KY MSA						
2520		Fargo--Moorhead, ND--MN MSA						
2560		Fayetteville, NC MSA	Yes	Yes	Yes	Yes	Yes	

MSA-CMSA code	PMSA code	MSA, CMSA, or PMSA Name	2000	2001	2002	2003	2004	2004 Change Profiles 2000-2004
2580		Fayetteville--Springdale--Rogers, AR MSA	Yes	Yes	Yes	Yes	Yes	
2620		Flagstaff, AZ--UT MSA						
2650		Florence, AL MSA						
2655		Florence, SC MSA						
2670		Fort Collins--Loveland, CO MSA						
2700		Fort Myers--Cape Coral, FL MSA	Yes	Yes	Yes	Yes	Yes	
2710		Fort Pierce--Port St. Lucie, FL MSA	Yes	Yes	Yes	Yes	Yes	
2720		Fort Smith, AR--OK MSA						
2750		Fort Walton Beach, FL MSA						
2760		Fort Wayne, IN MSA	Yes	Yes	Yes	Yes	Yes	
2840		Fresno, CA MSA	Yes	Yes	Yes	Yes	Yes	
2880		Gadsden, AL MSA						
2900		Gainesville, FL MSA						
2975		Glens Falls, NY MSA						
2980		Goldsboro, NC MSA						
2985		Grand Forks, ND--MN MSA						
2995		Grand Junction, CO MSA						
3000		Grand Rapids--Muskegon--Holland, MI MSA	Yes	Yes	Yes	Yes	Yes	Yes
3040		Great Falls, MT MSA						
3080		Green Bay, WI MSA						
3120		Greensboro--Winston-Salem--High Point, NC MSA	Yes	Yes	Yes	Yes	Yes	Yes
3150		Greenville, NC MSA						
3160		Greenville--Spartanburg--Anderson, SC MSA	Yes	Yes	Yes	Yes	Yes	

MSA-CMSA code	PMSA code	MSA, CMSA, or PMSA Name	2000	2001	2002	2003	2004	2004 Change Profiles 2000-2004
3240		Harrisburg--Lebanon--Carlisle, PA MSA	Yes	Yes	Yes	Yes	Yes	
3280		Hartford, CT MSA	Yes	Yes	Yes	Yes	Yes	
3285		Hattiesburg, MS MSA						
3290		Hickory--Morganton--Lenoir, NC MSA	Yes	Yes	Yes	Yes	Yes	
3320		Honolulu, HI MSA	Yes	Yes	Yes	Yes	Yes	
3350		Houma, LA MSA						
3362		Houston--Galveston--Brazoria, TX CMSA						
3362	1145	Brazoria, TX PMSA						
3362	2920	Galveston--Texas City, TX PMSA		Yes	Yes	Yes	Yes	
3362	3360	Houston, TX PMSA	Yes	Yes	Yes	Yes	Yes	Yes
3400		Huntington--Ashland, WV--KY--OH MSA						
3440		Huntsville, AL MSA	Yes	Yes	Yes	Yes	Yes	
3480		Indianapolis, IN MSA	Yes	Yes	Yes	Yes	Yes	Yes
3500		Iowa City, IA MSA						
3520		Jackson, MI MSA						
3560		Jackson, MS MSA	Yes	Yes	Yes	Yes	Yes	
3580		Jackson, TN MSA						
3600		Jacksonville, FL MSA	Yes	Yes	Yes	Yes	Yes	Yes
3605		Jacksonville, NC MSA						
3610		Jamestown, NY MSA						
3620		Janesville--Beloit, WI MSA						
3660		Johnson City--Kingsport--Bristol, TN--VA MSA	Yes	Yes	Yes	Yes	Yes	
3680		Johnstown, PA MSA						

MSA-CMSA code	PMSA code	MSA, CMSA, or PMSA Name	2000	2001	2002	2003	2004	2004 Change Profiles 2000-2004
3700		Jonesboro, AR MSA						
3710		Joplin, MO MSA						
3720		Kalamazoo--Battle Creek, MI MSA	Yes	Yes	Yes	Yes	Yes	
3760		Kansas City, MO--KS MSA	Yes	Yes	Yes	Yes	Yes	Yes
3810		Killeen--Temple, TX MSA	Yes	Yes	Yes	Yes	Yes	
3840		Knoxville, TN MSA	Yes	Yes	Yes	Yes	Yes	
3850		Kokomo, IN MSA						
3870		La Crosse, WI--MN MSA						
3880		Lafayette, LA MSA	Yes	Yes	Yes	Yes	Yes	
3920		Lafayette, IN MSA						
3960		Lake Charles, LA MSA						
3980		Lakeland--Winter Haven, FL MSA	Yes	Yes	Yes	Yes	Yes	
4000		Lancaster, PA MSA	Yes	Yes	Yes	Yes	Yes	
4040		Lansing--East Lansing, MI MSA	Yes	Yes	Yes	Yes	Yes	
4080		Laredo, TX MSA						
4100		Las Cruces, NM MSA						
4120		Las Vegas, NV--AZ MSA						
4150		Lawrence, KS MSA						
4200		Lawton, OK MSA						
4240		Lewiston--Auburn, ME MSA						
4280		Lexington, KY MSA	Yes	Yes	Yes	Yes	Yes	
4320		Lima, OH MSA						
4360		Lincoln, NE MSA			Yes	Yes	Yes	

MSA-CMSA code	PMSA code	MSA, CMSA, or PMSA Name	2000	2001	2002	2003	2004	2004 Change Profiles 2000-2004
4400		Little Rock--North Little Rock, AR MSA	Yes	Yes	Yes	Yes	Yes	
4420		Longview--Marshall, TX MSA						
4472		Los Angeles--Riverside--Orange County, CA CMSA	Yes	Yes	Yes	Yes	Yes	Yes
4472	4480	Los Angeles--Long Beach, CA PMSA	Yes	Yes	Yes	Yes	Yes	Yes
4472	5945	Orange County, CA PMSA	Yes	Yes	Yes	Yes	Yes	Yes
4472	6780	Riverside--San Bernardino, CA PMSA	Yes	Yes	Yes	Yes	Yes	Yes
4472	8735	Ventura, CA PMSA	Yes	Yes	Yes	Yes	Yes	
4520		Louisville, KY--IN MSA						
4600		Lubbock, TX MSA				Yes	Yes	
4640		Lynchburg, VA MSA						
4680		Macon, GA MSA	Yes	Yes	Yes	Yes	Yes	
4720		Madison, WI MSA	Yes	Yes	Yes	Yes	Yes	
4800		Mansfield, OH MSA						
4880		McAllen--Edinburg--Mission, TX MSA	Yes	Yes	Yes	Yes	Yes	
4890		Medford--Ashland, OR MSA						
4900		Melbourne--Titusville--Palm Bay, FL MSA	Yes	Yes	Yes	Yes	Yes	
4920		Memphis, TN--AR--MS MSA						
4940		Merced, CA MSA						
4992		Miami--Fort Lauderdale, FL CMSA	Yes	Yes	Yes	Yes	Yes	Yes
4992	2680	Fort Lauderdale, FL PMSA	Yes	Yes	Yes	Yes	Yes	Yes
4992	5000	Miami, FL PMSA	Yes	Yes	Yes	Yes	Yes	Yes
5082	5080	Milwaukee--Waukesha, WI PMSA	Yes	Yes	Yes	Yes	Yes	Yes
5082	6600	Racine, WI PMSA						



MSA-CMSA code	PMSA code	MSA, CMSA, or PMSA Name	2000	2001	2002	2003	2004	2004 Change Profiles 2000-2004
5120		Minneapolis--St. Paul, MN--WI MSA						
5140		Missoula, MT MSA						
5160		Mobile, AL MSA	Yes	Yes	Yes	Yes	Yes	
5170		Modesto, CA MSA	Yes	Yes	Yes	Yes	Yes	
5200		Monroe, LA MSA						
5240		Montgomery, AL MSA	Yes	Yes	Yes	Yes	Yes	
5280		Muncie, IN MSA						
5330		Myrtle Beach, SC MSA						
5345		Naples, FL MSA						
5360		Nashville, TN MSA	Yes	Yes	Yes	Yes	Yes	Yes
5520		New London--Norwich, CT--RI MSA	Yes	Yes				
5560		New Orleans, LA MSA	Yes	Yes	Yes	Yes	Yes	Yes
5602		New York--Northern New Jersey--Long Island, NY--NJ--CT--PA CMSA						
5602	0875	Bergen--Passaic, NJ PMSA	Yes	Yes	Yes	Yes	Yes	Yes
5602	1160	Bridgeport, CT PMSA	Yes	Yes	Yes	Yes	Yes	
5602	1930	Danbury, CT PMSA						
5602	2281	Dutchess County, NY PMSA	Yes	Yes	Yes	Yes	Yes	
5602	3640	Jersey City, NJ PMSA	Yes	Yes	Yes	Yes	Yes	
5602	5015	Middlesex--Somerset--Hunterdon, NJ PMSA	Yes	Yes	Yes	Yes	Yes	Yes
5602	5190	Monmouth--Ocean, NJ PMSA	Yes	Yes	Yes	Yes	Yes	Yes
5602	5380	Nassau--Suffolk, NY PMSA	Yes	Yes	Yes	Yes	Yes	Yes
5602	5480	New Haven--Meriden, CT PMSA	Yes	Yes	Yes	Yes	Yes	

MSA-CMSA code	PMSA code	MSA, CMSA, or PMSA Name	2000	2001	2002	2003	2004	2004 Change Profiles 2000-2004
5602	5600	New York, NY PMSA	Yes	Yes	Yes	Yes	Yes	Yes
5602	5640	Newark, NJ PMSA	Yes	Yes	Yes	Yes	Yes	Yes
5602	5660	Newburgh, NY--PA PMSA						
5602	8040	Stamford--Norwalk, CT PMSA	Yes	Yes	Yes	Yes	Yes	
5602	8480	Trenton, NJ PMSA	Yes	Yes	Yes	Yes	Yes	
5602	8880	Waterbury, CT PMSA						
5720		Norfolk--Virginia Beach--Newport News, VA--NC MSA						
5790		Ocala, FL MSA						
5800		Odessa--Midland, TX MSA						
5880		Oklahoma City, OK MSA	Yes	Yes	Yes	Yes	Yes	Yes
5920		Omaha, NE--IA MSA						
5960		Orlando, FL MSA	Yes	Yes	Yes	Yes	Yes	Yes
5990		Owensboro, KY MSA						
6015		Panama City, FL MSA						
6020		Parkersburg--Marietta, WV--OH MSA						
6080		Pensacola, FL MSA	Yes	Yes	Yes	Yes	Yes	
6120		Peoria--Pekin, IL MSA	Yes	Yes	Yes	Yes	Yes	
6162		Philadelphia--Wilmington--Atlantic City, PA--NJ--DE--MD CMSA						
6162	0560	Atlantic--Cape May, NJ PMSA	Yes	Yes	Yes	Yes	Yes	
6162	6160	Philadelphia, PA--NJ PMSA	Yes	Yes	Yes	Yes	Yes	Yes
6162	8760	Vineland--Millville--Bridgeton, NJ PMSA						
6162	9160	Wilmington--Newark, DE--MD PMSA						
6200		Phoenix--Mesa, AZ MSA						

MSA-CMSA code	PMSA code	MSA, CMSA, or PMSA Name	2000	2001	2002	2003	2004	2004 Change Profiles 2000-2004
6240		Pine Bluff, AR MSA						
6280		Pittsburgh, PA MSA	Yes	Yes	Yes	Yes	Yes	Yes
6320		Pittsfield, MA MSA						
6340		Pocatello, ID MSA						
6400		Portland, ME MSA						
6442		Portland--Salem, OR--WA CMSA						
6442	6440	Portland--Vancouver, OR--WA PMSA						
6442	7080	Salem, OR PMSA	Yes	Yes	Yes	Yes	Yes	
6480		Providence--Fall River--Warwick, RI--MA MSA	Yes	Yes	Yes	Yes	Yes	Yes
6520		Provo--Orem, UT MSA	Yes	Yes	Yes	Yes	Yes	
6560		Pueblo, CO MSA						
6580		Punta Gorda, FL MSA						
6640		Raleigh--Durham--Chapel Hill, NC MSA	Yes	Yes	Yes	Yes	Yes	Yes
6660		Rapid City, SD MSA						
6680		Reading, PA MSA	Yes	Yes	Yes	Yes	Yes	
6690		Redding, CA MSA						
6720		Reno, NV MSA	Yes	Yes	Yes	Yes	Yes	
6740		Richland--Kennewick--Pasco, WA MSA						
6760		Richmond--Petersburg, VA MSA	Yes	Yes	Yes	Yes	Yes	Yes
6800		Roanoke, VA MSA						
6820		Rochester, MN MSA						
6840		Rochester, NY MSA	Yes	Yes	Yes	Yes	Yes	Yes
6880		Rockford, IL MSA	Yes	Yes	Yes	Yes	Yes	

MSA-CMSA code	PMSA code	MSA, CMSA, or PMSA Name	2000	2001	2002	2003	2004	2004 Change Profiles 2000-2004
6895		Rocky Mount, NC MSA						
6922		Sacramento--Yolo, CA CMSA						
6922	6920	Sacramento, CA PMSA	Yes	Yes	Yes	Yes	Yes	Yes
6922	9270	Yolo, CA PMSA						
6960		Saginaw--Bay City--Midland, MI MSA	Yes	Yes	Yes	Yes	Yes	
6980		St. Cloud, MN MSA						
7000		St. Joseph, MO MSA						
7040		St. Louis, MO--IL MSA	Yes	Yes	Yes	Yes	Yes	Yes
7120		Salinas, CA MSA	Yes	Yes	Yes	Yes	Yes	
7160		Salt Lake City--Ogden, UT MSA	Yes	Yes	Yes	Yes	Yes	Yes
7200		San Angelo, TX MSA						
7240		San Antonio, TX MSA	Yes	Yes	Yes	Yes	Yes	Yes
7320		San Diego, CA MSA	Yes	Yes	Yes	Yes	Yes	Yes
7362		San Francisco--Oakland--San Jose, CA CMSA	Yes	Yes	Yes	Yes	Yes	Yes
7362	5775	Oakland, CA PMSA	Yes	Yes	Yes	Yes	Yes	Yes
7362	7360	San Francisco, CA PMSA	Yes	Yes	Yes	Yes	Yes	Yes
7362	7400	San Jose, CA PMSA	Yes	Yes	Yes	Yes	Yes	Yes
7362	7485	Santa Cruz--Watsonville, CA PMSA			Yes	Yes	Yes	
7362	7500	Santa Rosa, CA PMSA	Yes	Yes	Yes	Yes	Yes	
7362	8720	Vallejo--Fairfield--Napa, CA PMSA	Yes	Yes	Yes	Yes	Yes	
7460		San Luis Obispo--Atascadero--Paso Robles, CA MSA			Yes	Yes	Yes	
7480		Santa Barbara--Santa Maria--Lompoc, CA MSA	Yes	Yes	Yes	Yes	Yes	
7490		Santa Fe, NM MSA						

MSA-CMSA code	PMSA code	MSA, CMSA, or PMSA Name	2000	2001	2002	2003	2004	2004 Change Profiles 2000-2004
7510		Sarasota--Bradenton, FL MSA	Yes	Yes	Yes	Yes	Yes	
7520		Savannah, GA MSA	Yes	Yes	Yes	Yes	Yes	
7560		Scranton--Wilkes-Barre--Hazleton, PA MSA	Yes	Yes	Yes	Yes	Yes	
7602		Seattle--Tacoma--Bremerton, WA CMSA						
7602	1150	Bremerton, WA PMSA						
7602	5910	Olympia, WA PMSA						
7602	7600	Seattle--Bellevue--Everett, WA PMSA	Yes	Yes	Yes	Yes	Yes	Yes
7602	8200	Tacoma, WA PMSA	Yes	Yes	Yes	Yes	Yes	
7610		Sharon, PA MSA						
7620		Sheboygan, WI MSA						
7640		Sherman--Denison, TX MSA						
7680		Shreveport--Bossier City, LA MSA	Yes	Yes	Yes	Yes	Yes	
7720		Sioux City, IA--NE MSA						
7760		Sioux Falls, SD MSA						
7800		South Bend, IN MSA	Yes	Yes	Yes	Yes	Yes	
7840		Spokane, WA MSA	Yes	Yes	Yes	Yes	Yes	
7880		Springfield, IL MSA						
7920		Springfield, MO MSA	Yes	Yes	Yes	Yes	Yes	
8000		Springfield, MA MSA	Yes	Yes	Yes	Yes	Yes	
8050		State College, PA MSA						
8080		Steubenville--Weirton, OH--WV MSA						
8120		Stockton--Lodi, CA MSA	Yes	Yes	Yes	Yes	Yes	
8140		Sumter, SC MSA						

MSA-CMSA code	PMSA code	MSA, CMSA, or PMSA Name	2000	2001	2002	2003	2004	2004 Change Profiles 2000-2004
8160		Syracuse, NY MSA	Yes	Yes	Yes	Yes	Yes	
8240		Tallahassee, FL MSA	Yes	Yes	Yes	Yes	Yes	
8280		Tampa--St. Petersburg--Clearwater, FL MSA	Yes	Yes	Yes	Yes	Yes	Yes
8320		Terre Haute, IN MSA						
8360		Texarkana, TX--Texarkana, AR MSA						
8400		Toledo, OH MSA	Yes	Yes	Yes	Yes	Yes	
8440		Topeka, KS MSA						
8520		Tucson, AZ MSA	Yes	Yes	Yes	Yes	Yes	
8560		Tulsa, OK MSA	Yes	Yes	Yes	Yes	Yes	
8600		Tuscaloosa, AL MSA						
8640		Tyler, TX MSA						
8680		Utica--Rome, NY MSA	Yes	Yes	Yes	Yes	Yes	
8750		Victoria, TX MSA						
8780		Visalia--Tulare--Porterville, CA MSA	Yes	Yes	Yes	Yes	Yes	Yes
8800		Waco, TX MSA						
8872		Washington--Baltimore, DC--MD--VA--WV CMSA						
8872	0720	Baltimore, MD PMSA						
8872	3180	Hagerstown, MD PMSA						
8872	8840	Washington, DC--MD--VA--WV PMSA						
8920		Waterloo--Cedar Falls, IA MSA						
8940		Wausau, WI MSA						
8960		West Palm Beach--Boca Raton, FL MSA	Yes	Yes	Yes	Yes	Yes	Yes
9000		Wheeling, WV--OH MSA						

<b>MSA-CMSA code</b>	<b>PMSA code</b>	<b>MSA, CMSA, or PMSA Name</b>	<b>2000</b>	<b>2001</b>	<b>2002</b>	<b>2003</b>	<b>2004</b>	<b>2004 Change Profiles 2000-2004</b>
9040		Wichita, KS MSA	Yes	Yes	Yes	Yes	Yes	
9080		Wichita Falls, TX MSA						
9140		Williamsport, PA MSA						
9200		Wilmington, NC MSA						
9260		Yakima, WA MSA						
9280		York, PA MSA	Yes	Yes	Yes	Yes	Yes	
9320		Youngstown--Warren, OH MSA	Yes	Yes	Yes	Yes	Yes	
9340		Yuba City, CA MSA						
9360		Yuma, AZ MSA						

## Geographic Areas for Which Data Are Available

Note: \* denotes areas that fall within American Community Survey Test Sites

State	Name	Summary Level	2000	2001	2002	2003	2004	2004 Change 2000 to 2004
UNITED STATES	<i>Nation</i>	010	x	x	x	x	x	x
ALABAMA	<i>state only</i>	040	x	x	x	x	x	x
	Birmingham, AL MSA	380	x	x	x	x	x	
	Huntsville, AL MSA	380	x	x	x	x	x	
	Jefferson County	050	x	x	x	x	x	
	Madison County	050	x	x	x	x	x	
	Mobile County	050	x	x	x	x	x	
	Mobile, AL MSA	380	x	x	x	x	x	
	Montgomery, AL MSA	380	x	x	x	x	x	
ALASKA	<i>state only</i>	040	x	x	x	x	x	x
	AK Congressional District (at Large)	500	x	x	x	x	x	
	Anchorage Municipality	050, 160	x	x	x	x	x	
	Anchorage municipality, Anchorage Municipality pt.	155	x	x	x	x	x	
	Anchorage, AK MSA	380	x	x	x	x	x	
ARIZONA	<i>state only</i>	040	x	x	x	x	x	x
	AZ Congressional District 1	500	x	x				
	AZ Congressional District 3	500			x	x	x	
	AZ Congressional District 4	500	x	x	x	x	x	
	AZ Congressional District 5	500			x	x	x	
	Maricopa County	050	x	x	x	x	x	x
	Mesa city	160	x	x	x	x	x	



State	Name	Summary Level						2004
			2000	2001	2002	2003	2004	Change 2000 to 2004
	Mesa city, Maricopa County pt.	155	x	x	x	x	x	
	Phoenix city	160	x	x	x	x	x	x
	Phoenix city, Maricopa County pt.	155	x	x	x	x	x	x
	Pima County *	001, 050	x	x	x	x	x	x
	Tucson city *	160	x	x	x	x	x	x
	Tucson city, Pima County pt. *	155	x	x	x	x	x	x
	Tucson, AZ MSA *	380	x	x	x	x	x	x
ARKANSAS	<i>state only</i>	040	x	x	x	x	x	x
	Fayetteville--Springdale--Rogers, AR MSA	380	x	x	x	x	x	
	Jefferson County *	050	x	x	x	x	x	
	Little Rock--North Little Rock, AR MSA	380	x	x	x	x	x	
	Pulaski County	050	x	x	x	x	x	
CALIFORNIA	<i>state only</i>	040	x	x	x	x	x	x
	Alameda County	050	x	x	x	x	x	x
	Anaheim city	160	x	x	x	x	x	
	Anaheim city, Orange County pt.	155	x	x	x	x	x	
	Bakersfield city	160			x	x	x	
	Bakersfield city, Kern County pt.	155			x	x	x	
	Bakersfield, CA MSA	380	x	x	x	x	x	
	CA Congressional District 5	500	x	x	x	x	x	
	CA Congressional District 6	500	x	x	x	x	x	
	CA Congressional District 7	500	x	x	x	x	x	
	CA Congressional District 8	500	x	x	x	x	x	
	CA Congressional District 9	500	x	x	x	x	x	
	CA Congressional District 10	500	x	x	x	x	x	
	CA Congressional District 11	500	x	x	x	x	x	

<b>State</b>	<b>Name</b>	<b>Summary Level</b>	<b>2000</b>	<b>2001</b>	<b>2002</b>	<b>2003</b>	<b>2004</b>	<b>2004 Change 2000 to 2004</b>
	CA Congressional District 12	500	x	x	x	x	x	
	CA Congressional District 13	500	x	x	x	x	x	
	CA Congressional District 14	500	x	x	x	x	x	
	CA Congressional District 15	500	x	x	x	x	x	
	CA Congressional District 16	500	x	x	x	x	x	
	CA Congressional District 21	500	x	x	x	x	x	
	CA Congressional District 22	500	x	x	x	x	x	
	CA Congressional District 23	500	x	x	x	x	x	
	CA Congressional District 24	500	x	x	x	x	x	
	CA Congressional District 25	500	x	x				
	CA Congressional District 26	500	x	x	x	x	x	
	CA Congressional District 27	500	x	x	x	x	x	
	CA Congressional District 28	500	x	x	x	x	x	
	CA Congressional District 29	500	x	x	x	x	x	
	CA Congressional District 30	500	x	x	x	x	x	
	CA Congressional District 31	500	x	x	x	x	x	
	CA Congressional District 32	500	x	x	x	x	x	
	CA Congressional District 33	500	x	x	x	x	x	
	CA Congressional District 34	500	x	x	x	x	x	
	CA Congressional District 35	500	x	x	x	x	x	
	CA Congressional District 36	500	x	x	x	x	x	
	CA Congressional District 37	500	x	x	x	x	x	
	CA Congressional District 38	500	x	x	x	x	x	
	CA Congressional District 39	500	x	x	x	x	x	
	CA Congressional District 40	500			x	x	x	
	CA Congressional District 41	500	x	x	x	x	x	
	CA Congressional District 42	500	x	x	x	x	x	
	CA Congressional District 43	500	x	x	x	x	x	

State	Name	Summary Level						2004
			2000	2001	2002	2003	2004	Change 2000 to 2004
	CA Congressional District 44	500	x	x	x	x	x	
	CA Congressional District 45	500	x	x	x	x	x	
	CA Congressional District 46	500	x	x	x	x	x	
	CA Congressional District 47	500	x	x	x	x	x	
	CA Congressional District 48	500	x	x	x	x	x	
	CA Congressional District 49	500	x	x	x	x	x	
	CA Congressional District 50	500	x	x	x	x	x	
	CA Congressional District 51	500	x	x				
	CA Congressional District 52	500			x	x	x	
	CA Congressional District 53	500			x	x	x	
	Contra Costa County	050	x	x	x	x	x	
	Fresno city	160	x	x	x	x	x	
	Fresno city, Fresno County pt.	155	x	x	x	x	x	
	Fresno County	050	x	x	x	x	x	
	Fresno, CA MSA	380	x	x	x	x	x	
	Kern County	050	x	x	x	x	x	
	Long Beach city	160	x	x	x	x	x	
	Long Beach city, Los Angeles County pt.	155	x	x	x	x	x	
	Los Angeles city	160	x	x	x	x	x	x
	Los Angeles city, Los Angeles County pt.	155	x	x	x	x	x	x
	Los Angeles County	050	x	x	x	x	x	x
	Los Angeles--Long Beach, CA PMSA	385	x	x	x	x	x	x
	Los Angeles--Riverside--Orange County, CA CMSA	380	x	x	x	x	x	x
	Modesto, CA MSA	380	x	x	x	x	x	
	Monterey County	050	x	x	x	x	x	
	Oakland city	160	x	x	x	x	x	
	Oakland city, Alameda County pt.	155	x	x	x	x	x	
	Oakland, CA PMSA	385	x	x	x	x	x	x

State	Name	Summary Level						2004	2004
			2000	2001	2002	2003	2004	Change 2000 to 2004	
	Orange County	050	x	x	x	x	x	x	x
	Orange County, CA PMSA	385	x	x	x	x	x	x	x
	Placer County, CA	050		x	x	x	x		
	Riverside city	160	x	x	x	x	x		
	Riverside city, Riverside County pt.	155	x	x	x	x	x		
	Riverside County	050	x	x	x	x	x	x	x
	Riverside--San Bernardino, CA PMSA	385	x	x	x	x	x	x	x
	Sacramento city	160	x	x	x	x	x		
	Sacramento city, Sacramento County pt.	155	x	x	x	x	x		
	Sacramento County	050	x	x	x	x	x	x	x
	Sacramento, CA PMSA	385	x	x	x	x	x	x	x
	Salinas, CA MSA	380	x	x	x	x	x		
	San Bernardino County	050	x	x	x	x	x	x	x
	San Diego city	160	x	x	x	x	x	x	x
	San Diego city, San Diego County pt.	155	x	x	x	x	x	x	x
	San Diego County	050	x	x	x	x	x	x	x
	San Diego, CA MSA	380	x	x	x	x	x	x	x
	San Francisco city *	160	x	x	x	x	x	x	x
	San Francisco city, San Francisco County pt. *	155	x	x	x	x	x	x	x
	San Francisco County *	001, 050	x	x	x	x	x	x	x
	San Francisco, CA PMSA	385	x	x	x	x	x	x	x
	San Francisco--Oakland--San Jose, CA CMSA	380	x	x	x	x	x	x	x
	San Joaquin County	050	x	x	x	x	x		
	San Jose city	160	x	x	x	x	x		
	San Jose city, Santa Clara County pt.	155	x	x	x	x	x		
	San Jose, CA PMSA	385	x	x	x	x	x	x	x
	San Luis Obispo County	050			x	x	x		
	San Luis Obispo – Atascadero – Paso Robles, CA MSA	380			x	x	x		

State	Name	Summary						2004
		Level	2000	2001	2002	2003	2004	Change 2000 to 2004
	San Mateo County	050	x	x	x	x	x	
	Santa Ana city	160	x	x	x	x	x	
	Santa Ana city, Orange County pt.	155	x	x	x	x	x	
	Santa Barbara County	050	x	x	x	x	x	
	Santa Barbara--Santa Maria--Lompoc, CA MSA	380	x	x	x	x	x	
	Santa Clara County	050	x	x	x	x	x	x
	Santa Cruz County	050			x	x	x	
	Santa Cruz – Watsonville, CA PMSA	385			x	x	x	
	Santa Rosa, CA PMSA	385	x	x	x	x	x	
	Solano County	050	x	x	x	x	x	
	Sonoma County	050	x	x	x	x	x	
	Stanislaus County	050	x	x	x	x	x	
	Stockton city	160		x	x	x	x	
	Stockton city, San Joaquin County pt.	155		x	x	x	x	
	Stockton--Lodi, CA MSA	380	x	x	x	x	x	
	Tulare County *	001, 050	x	x	x	x	x	x
	Vallejo--Fairfield--Napa, CA PMSA	385	x	x	x	x	x	
	Ventura County	050	x	x	x	x	x	
	Ventura, CA PMSA	385	x	x	x	x	x	
	Visalia city *	160	x	x	x	x	x	
	Visalia--Tulare--Porterville, CA MSA*	380	x	x	x	x	x	
COLORADO	<i>state only</i>	040	x	x	x	x	x	x
	Adams County	050	x	x	x	x	x	
	Arapahoe County	050	x	x	x	x	x	
	Aurora city	160	x	x	x	x	x	
	Boulder County	050	x	x	x	x	x	
	Boulder--Longmont, CO PMSA	385	x	x	x	x	x	

State	Name	Summary						2004 Change 2000 to 2004
		Level	2000	2001	2002	2003	2004	
	CO Congressional District 1	500	x	x	x	x	x	
	CO Congressional District 6	500	x	x				
	CO Congressional District 7	500			x	x	x	
	Colorado Springs city	160	x	x	x	x	x	
	Colorado Springs city, El Paso County pt.	155	x	x	x	x	x	
	Colorado Springs, CO MSA	380	x	x	x	x	x	
	Denver city	160	x	x	x	x	x	
	Denver city, Denver County pt.	155	x	x	x	x	x	
	Denver County	050	x	x	x	x	x	
	Denver, CO PMSA	385	x	x	x	x	x	x
	El Paso County	050	x	x	x	x	x	
	Jefferson County	050	x	x	x	x	x	
CONNECTICUT	<i>state only</i>	040	x	x	x	x	x	x
	Boston--Worcester--Lawrence, MA--NH--ME--CT CMSA	380	x	x	x	x	x	x
	Bridgeport, CT PMSA	385	x	x	x	x	x	
	CT Congressional District 1	500	x	x	x	x	x	
	CT Congressional District 2	500	x	x	x	x	x	
	CT Congressional District 3	500	x	x	x	x	x	
	CT Congressional District 4	500	x	x	x	x	x	
	CT Congressional District 5	500	x	x	x	x	x	
	CT Congressional District 6	500	x	x				
	Fairfield County	050	x	x	x	x	x	
	Hartford County	050	x	x	x	x	x	
	Hartford, CT MSA	380	x	x	x	x	x	
	New Haven County	050	x	x	x	x	x	
	New Haven--Meriden, CT PMSA	385	x	x	x	x	x	

State	Name	Summary Level						2004
			2000	2001	2002	2003	2004	Change 2000 to 2004
	New London County	050			x	x	x	
	New London--Norwich, CT--RI MSA	380	x	x				
	Stamford--Norwalk, CT PMSA	385	x	x	x	x	x	
	Worcester, MA--CT PMSA	385	x	x	x	x	x	
DELAWARE	<i>state only</i>	040	x	x	x	x	x	x
	DE Congressional District (at Large)	500	x	x	x	x	x	
	New Castle County	050	x	x	x	x	x	
DISTRICT OF COLUMBIA	<i>state only</i>	040	x	x	x	x	x	x
	DC Delegate District (at Large)	500	x	x	x	x	x	
	District of Columbia	050	x	x	x	x	x	
	Washington city	160	x	x	x	x	x	
	Washington city, District of Columbia pt.	155	x	x	x	x	x	
FLORIDA	<i>state only</i>	040	x	x	x	x	x	x
	Brevard County	050	x	x	x			
	Broward County *	001, 050	x	x	x	x	x	x
	Coral Springs city *	160	x	x	x	x	x	
	Davie town *	160	x	x	x	x	x	
	Daytona Beach, FL MSA	380	x	x	x	x	x	
	Deerfield Beach city *	160	x		x	x	x	
	Duval County	050	x	x	x	x	x	
	Escambia County	050	x	x	x	x	x	
	FL Congressional District 4	500	x	x				
	FL Congressional District 7	500	x	x				
	FL Congressional District 8	500	x	x				

State	Name	Summary Level						2004
			2000	2001	2002	2003	2004	Change 2000 to 2004
	FL Congressional District 9	500	x	x	x	x	x	
	FL Congressional District 10	500	x	x	x	x	x	
	FL Congressional District 11	500	x	x	x	x	x	
	FL Congressional District 12	500			x	x	x	
	FL Congressional District 17	500	x	x	x	x	x	
	FL Congressional District 18	500	x	x				
	FL Congressional District 19	500	x	x	x	x	x	
	FL Congressional District 20	500			x	x	x	
	FL Congressional District 21	500	x	x	x	x	x	
	FL Congressional District 22	500	x	x	x	x	x	
	FL Congressional District 24	500			x	x	x	
	Fort Lauderdale city *	160	x	x	x	x	x	
	Fort Lauderdale, FL PMSA *	385	x	x	x	x	x	x
	Fort Myers--Cape Coral, FL MSA	380	x	x	x	x	x	
	Fort Pierce--Port St. Lucie, FL MSA	380	x	x	x	x	x	
	Hillsborough County	050	x	x	x	x	x	x
	Hollywood city *	160	x	x	x	x	x	
	Jacksonville city	160	x	x	x	x	x	
	Jacksonville city, Duval County pt.	155	x	x	x	x	x	
	Jacksonville, FL MSA	380	x	x	x	x	x	x
	Lakeland--Winter Haven, FL MSA	380	x	x	x	x	x	
	Lake County	050					x	
	Lee County	050	x	x	x	x	x	
	Manatee County	050	x	x	x	x	x	
	Melbourne--Titusville--Palm Bay, FL MSA	380	x	x	x	x	x	
	Miami city	160	x	x	x	x	x	
	Miami city, Miami-Dade County pt.	155	x	x	x	x	x	
	Miami, FL PMSA	385	x	x	x	x	x	x



State	Name	Summary Level						2004
			2000	2001	2002	2003	2004	Change 2000 to 2004
	Miami-Dade County	050	x	x	x	x	x	x
	Miami--Fort Lauderdale, FL CMSA	380	x	x	x	x	x	x
	Miramar city *	160	x	x	x	x	x	
	Orange County	050	x	x	x	x	x	
	Orlando, FL MSA	380	x	x	x	x	x	x
	Palm Beach County	050	x	x	x	x	x	x
	Pasco County	050	x	x	x	x	x	
	Pembroke Pines city *	160	x	x	x	x	x	
	Pensacola, FL MSA	380	x	x	x	x	x	
	Pinellas County	050	x	x	x	x	x	
	Plantation city *	160	x	x	x	x	x	
	Polk County	050	x	x	x	x	x	
	Pompano Beach city *	160	x	x	x	x	x	
	Sarasota County	050	x	x	x	x	x	
	Sarasota--Bradenton, FL MSA	380	x	x	x	x	x	
	Seminole County	050	x	x	x	x	x	
	St. Petersburg city	160		x	x	x	x	
	St. Petersburg city, Pinellas County pt.	155		x				
	Sunrise city *	160	x	x	x	x	x	
	Tallahassee, FL MSA	380	x	x	x	x	x	
	Tampa city	160	x	x	x	x	x	
	Tampa city, Hillsborough County pt.	155	x	x	x	x	x	
	Tampa--St. Petersburg--Clearwater, FL MSA	380	x	x	x	x	x	x
	Volusia County	050	x	x	x	x	x	
	West Palm Beach--Boca Raton, FL MSA	380	x	x	x	x	x	x
GEORGIA	<i>state only</i>	040	x	x	x	x	x	x
	Atlanta city	160	x	x	x	x	x	

State	Name	Summary Level						2004
			2000	2001	2002	2003	2004	Change 2000 to 2004
	Atlanta city, Fulton County pt.	155	x	x	x	x	x	
	Atlanta, GA MSA	380	x	x	x	x	x	x
	Augusta--Aiken, GA--SC MSA	380	x	x	x	x	x	
	Clayton County	050			x	x	x	
	Cobb County	050	x	x	x	x	x	
	DeKalb County	050	x	x	x	x	x	
	Fulton County	050	x	x	x	x	x	
	GA Congressional District 4	500	x	x	x	x	x	
	GA Congressional District 5	500	x	x	x	x	x	
	GA Congressional District 6	500	x	x	x	x	x	
	GA Congressional District 7	500			x	x	x	
	Gwinnett County	050	x	x	x	x	x	
	Macon, GA MSA	380	x	x	x	x	x	
	Savannah, GA MSA	380	x	x	x	x	x	
HAWAII	<i>state only</i>	040	x	x	x	x	x	x
	HI Congressional District 1	500	x	x	x	x	x	
	Honolulu CDP	160	x	x	x	x	x	
	Honolulu CDP, Honolulu County pt.	155	x	x	x	x	x	
	Honolulu County	050	x	x	x	x	x	
	Honolulu, HI MSA	380	x	x	x	x	x	
IDAHO	<i>state only</i>	040	x	x	x	x	x	x
	Ada County	050	x	x	x	x	x	
	Boise City, ID MSA	380	x	x	x	x	x	
ILLINOIS	<i>state only</i>	040	x	x	x	x	x	x
	Avon township	160					x	

State	Name	Summary					2004	2004 Change 2000 to 2004
		Level	2000	2001	2002	2003		
	Chicago city	160	x	x	x	x	x	x
	Chicago city, Cook County pt.	155	x	x	x	x	x	x
	Chicago, IL PMSA	385	x	x	x	x	x	x
	Cook County	050	x	x	x	x	x	x
	Davenport--Moline--Rock Island, IA--IL MSA	380	x	x	x	x	x	
	DuPage County	050	x	x	x	x	x	
	IL Congressional District 1	500	x	x	x	x	x	
	IL Congressional District 2	500	x	x	x	x	x	
	IL Congressional District 3	500	x	x	x	x	x	
	IL Congressional District 4	500	x	x	x	x	x	
	IL Congressional District 5	500	x	x	x	x	x	
	IL Congressional District 6	500	x	x	x	x	x	
	IL Congressional District 7	500	x	x	x	x	x	
	IL Congressional District 8	500	x	x	x	x	x	
	IL Congressional District 9	500	x	x	x	x	x	
	IL Congressional District 10	500	x	x	x	x	x	
	IL Congressional District 13	500	x	x	x	x	x	
	Kane County	050	x	x	x	x	x	
	Lake County *	001, 050	x	x	x	x	x	x
	Madison County	050	x	x	x	x	x	
	McHenry County	050	x	x	x	x	x	
	Peoria--Pekin, IL MSA	380	x	x	x	x	x	
	Rockford, IL MSA	380	x	x	x	x	x	
	St. Clair County	050	x	x	x	x	x	
	St. Louis, MO--IL MSA	380	x	x	x	x	x	x
	Vernon township *	060		x	x	x	x	
	Waukegan city *	160	x	x	x	x	x	
	Waukegan township *	060		x	x	x	x	

State	Name	Summary						2004 Change 2000 to 2004
		Level	2000	2001	2002	2003	2004	
INDIANA	Will County	050	x	x	x	x	x	
	Winnebago County	050	x	x	x	x	x	
	<i>state only</i>	040	x	x	x	x	x	x
	Allen County	050	x	x	x	x	x	
	Fort Wayne, IN MSA	380	x	x	x	x	x	
	IN Congressional District 7	500			x	x	x	
	IN Congressional District 10	500	x	x				
	Indianapolis city (balance)	160	x	x	x	x	x	
	Indianapolis city (balance), Marion County pt.	155	x	x	x	x	x	
	Indianapolis, IN MSA	380	x	x	x	x	x	x
	Lake County	050	x	x	x	x	x	
	Marion County	050	x	x	x	x	x	
	South Bend, IN MSA	380	x	x	x	x	x	
St. Joseph County	050	x	x	x	x	x		
IOWA	<i>state only</i>	040	x	x	x	x	x	x
	Black Hawk County *	001, 050	x	x	x	x	x	
	Davenport--Moline--Rock Island, IA--IL MSA	380	x	x	x	x	x	
	Des Moines, IA MSA	380	x	x	x	x	x	
	Polk County	050	x	x	x	x	x	
	Waterloo city *	160	x		x	x	x	
	KANSAS	<i>state only</i>	040	x	x	x	x	x
Johnson County		050	x	x	x	x	x	
Kansas City, MO--KS MSA		380	x	x	x	x	x	x
KS Congressional District 3		500	x	x	x	x	x	
Sedgwick County		050	x	x	x	x	x	

State	Name	Summary Level						2004
			2000	2001	2002	2003	2004	Change 2000 to 2004
	Wichita city	160	x	x	x	x	x	
	Wichita city, Sedgwick County pt.	155	x	x	x	x	x	
	Wichita, KS MSA	380	x	x	x	x	x	
KENTUCKY								
	<i>state only</i>	040	x	x	x	x	x	x
	Fayette County	050			x	x	x	
	Jefferson County	050	x	x	x	x	x	
	KY Congressional District 3	500	x	x	x	x	x	
	Lexington, KY MSA	380	x	x	x	x	x	
	Lexington-Fayette	160			x	x	x	
	Lexington-Fayette, Fayette County pt.	155			x	x	x	
	Louisville city	160			x	x		
	Louisville city, Jefferson County pt.	155			x	x	x	
	Louisville-Jefferson County city	160					x	
LOUISIANA								
	<i>state only</i>	040	x	x	x	x	x	x
	Baton Rouge, LA MSA	380	x	x	x	x	x	
	Caddo Parish	050			x	x	x	
	East Baton Rouge Parish	050	x	x	x	x	x	
	Jefferson Parish	050	x	x	x	x	x	
	LA Congressional District 2	500	x	x	x	x	x	
	Lafayette, LA MSA	380	x	x	x	x	x	
	New Orleans city	160	x	x	x	x	x	
	New Orleans city, Orleans Parish pt.	155	x	x	x	x	x	
	New Orleans, LA MSA	380	x	x	x	x	x	x
	Orleans Parish	050	x	x	x	x	x	
	Shreveport--Bossier City, LA MSA	380	x	x	x	x	x	
MAINE								

State	Name	Summary Level						2004	2004
			2000	2001	2002	2003	2004	Change 2000 to 2004	
	<i>state only</i>	040	x	x	x	x	x	x	
	Boston--Worcester--Lawrence, MA--NH--ME--CT CMSA	380	x	x	x	x	x	x	
	Cumberland County	050	x	x	x	x	x		
	ME Congressional District 1	500	x	x	x	x	x		
	ME Congressional District 2	500	x	x	x	x	x		
	Portsmouth--Rochester, NH--ME PMSA	385				x	x		
	Portland, ME MSA	380					x		
MARYLAND									
	<i>state only</i>	040	x	x	x	x	x	x	
	Anne Arundel County	050	x	x	x	x	x		
	Baltimore city	050, 160	x	x	x	x	x		
	Baltimore city, Baltimore city pt.	155	x	x	x	x	x		
	Baltimore County	050	x	x	x	x	x		
	Calvert County *	001, 050	x	x	x	x	x		
	Howard County	050		x	x	x	x		
	MD Congressional District 2	500	x	x	x	x	x		
	MD Congressional District 3	500	x	x	x	x	x		
	MD Congressional District 4	500	x	x	x	x	x		
	MD Congressional District 7	500	x	x	x	x	x		
	MD Congressional District 8	500	x	x	x	x	x		
	Montgomery County	050	x	x	x	x	x		
	Prince George's County	050	x	x	x	x	x		
MASSACHUSETTS									
	<i>state only</i>	040	x	x	x	x	x	x	
	Boston--Worcester--Lawrence, MA--NH--ME--CT CMSA	380	x	x	x	x	x	x	
	Boston, MA--NH PMSA	385	x	x	x	x	x	x	

State	Name	Summary Level						2004
			2000	2001	2002	2003	2004	Change 2000 to 2004
	Boston city	160	x	x	x	x	x	
	Boston city, Suffolk County pt.	155	x	x	x	x	x	
	Bristol County	050	x	x	x	x	x	
	Brockton, MA PMSA	385		x	x	x	x	
	Essex County	050	x	x	x	x	x	
	Hampden County *	001, 050	x	x	x	x	x	x
	Lawrence, MA--NH PMSA	385	x	x	x	x	x	
	Lowell, MA--NH PMSA	385	x	x	x	x	x	
	MA Congressional District 1	500	x	x	x	x	x	
	MA Congressional District 2	500	x	x	x	x	x	
	MA Congressional District 3	500	x	x	x	x	x	
	MA Congressional District 4	500	x	x	x	x	x	
	MA Congressional District 5	500	x	x	x	x	x	
	MA Congressional District 6	500	x	x	x	x	x	
	MA Congressional District 7	500	x	x	x	x	x	
	MA Congressional District 8	500	x	x	x	x	x	
	MA Congressional District 9	500	x	x	x	x	x	
	MA Congressional District 10	500	x	x	x	x	x	
	Middlesex County	050	x	x	x	x	x	x
	Norfolk County	050	x	x	x	x	x	
	Plymouth County	050	x	x	x	x	x	
	Providence--Fall River--Warwick, RI--MA MSA	380	x	x	x	x	x	
	Springfield city *	060	x	x	x	x	x	
	Springfield city *	160				x	x	
	Springfield, MA MSA	380	x	x	x	x	x	
	Suffolk County	050	x	x	x	x	x	
	Worcester County	050	x	x	x	x	x	
	Worcester, MA--CT PMSA	385	x	x	x	x	x	

<b>State</b>	<b>Name</b>	<b>Summary Level</b>	<b>2000</b>	<b>2001</b>	<b>2002</b>	<b>2003</b>	<b>2004</b>	<b>2004 Change 2000 to 2004</b>
MICHIGAN								
	<i>state only</i>	040	x	x	x	x	x	x
	Ann Arbor, MI PMSA	385	x	x	x	x	x	
	Detroit city	160	x	x	x	x	x	
	Detroit city, Wayne County pt.	155	x	x	x	x	x	
	Detroit, MI PMSA	385	x	x	x	x	x	x
	Detroit--Ann Arbor--Flint, MI CMSA	380	x	x	x	x	x	x
	Flint, MI PMSA	385	x	x	x	x	x	
	Genesee County	050	x	x	x	x	x	
	Grand Rapids--Muskegon--Holland, MI MSA	380	x	x	x	x	x	x
	Ingham County	050	x	x	x	x	x	
	Kalamazoo--Battle Creek, MI MSA	380	x	x	x	x	x	
	Kent County	050	x	x	x	x	x	
	Lansing--East Lansing, MI MSA	380	x	x	x	x	x	
	Macomb County	050	x	x	x	x	x	
	MI Congressional District 6	500	x	x	x	x	x	
	MI Congressional District 9	500	x	x	x	x	x	
	MI Congressional District 10	500	x	x				
	MI Congressional District 11	500	x	x	x	x	x	
	MI Congressional District 12	500	x	x	x	x	x	
	MI Congressional District 13	500	x	x	x	x	x	
	MI Congressional District 14	500	x	x	x	x	x	
	MI Congressional District 15	500	x	x	x	x	x	
	MI Congressional District 16	500	x	x				
	Oakland County	050	x	x	x	x	x	x
	Ottawa County	050					x	
	Saginaw--Bay City--Midland, MI MSA	380	x	x	x	x	x	
	Washtenaw County	050	x	x	x	x	x	



State	Name	Summary Level						2004	2004
			2000	2001	2002	2003	2004	Change 2000 to 2004	
MINNESOTA	Wayne County	050	x	x	x	x	x	x	x
	<i>state only</i>	040	x	x	x	x	x	x	x
	Anoka County	050	x	x	x	x	x	x	
	Dakota County	050	x	x	x	x	x	x	
	Hennepin County	050	x	x	x	x	x	x	x
	Minneapolis city	160	x	x	x	x	x	x	
	Minneapolis city, Hennepin County pt.	155	x	x	x	x	x	x	
	MN Congressional District 3	500	x	x	x	x	x	x	
	MN Congressional District 4	500	x	x	x	x	x	x	
	MN Congressional District 5	500	x	x	x	x	x	x	
	MN Congressional District 6	500	x	x	x	x	x	x	
	Ramsey County	050	x	x	x	x	x	x	
	St. Paul city	160	x	x	x	x	x	x	
	St. Paul city, Ramsey County pt.	155	x	x	x	x	x	x	
MISSISSIPPI	<i>state only</i>	040	x	x	x	x	x	x	x
	Biloxi--Gulfport--Pascagoula, MS MSA	380	x	x	x	x	x	x	
	Jackson, MS MSA	380	x	x	x	x	x	x	
	Madison County *	001, 050	x	x	x	x	x	x	
MISSOURI	<i>state only</i>	040	x	x	x	x	x	x	x
	Jackson County	050	x	x	x	x	x	x	
	Kansas City city	160	x	x	x	x	x	x	
	Kansas City city, Jackson County pt.	155	x	x	x	x	x	x	
	Kansas City, MO--KS MSA	380	x	x	x	x	x	x	x
	MO Congressional District 1	500	x	x	x	x	x	x	
	MO Congressional District 2	500	x	x	x	x	x	x	

State	Name	Summary Level						2004	2004
			2000	2001	2002	2003	2004	Change 2000 to 2004	
	MO Congressional District 5	500	x	x	x	x	x		
	Springfield, MO MSA	380	x	x	x	x	x		
	St. Charles County	050	x	x	x	x	x		
	St. Louis city	050, 160	x	x	x	x	x		
	St. Louis city, St. Louis city pt.	155	x	x	x	x	x		
	St. Louis County	050	x	x	x	x	x		
	St. Louis, MO--IL MSA	380	x	x	x	x	x	x	
MONTANA									
	<i>state only</i>	040	x	x	x	x	x	x	
	Flathead-Lake *	001	x	x	x	x	x		
	Flathead County *	050	x	x	x	x	x		
	MT Congressional District (at Large)	500	x	x	x	x	x		
NEBRASKA									
	<i>state only</i>	040	x	x	x	x	x	x	
	Douglas County *	001, 050	x	x	x	x	x	x	
	NE Congressional District 2	500	x	x	x	x	x		
	Lancaster County	050			x	x	x		
	Lincoln, NE MSA	380			x	x	x		
	Omaha city *	160	x	x	x	x	x	x	
	Omaha city, Douglas County pt. *	155	x	x	x	x	x		
NEVADA									
	<i>state only</i>	040	x	x	x	x	x	x	
	Clark County	050	x	x	x	x	x	x	
	Las Vegas city	160	x	x	x	x	x		
	Las Vegas city, Clark County pt.	155	x	x	x	x	x		
	NV Congressional District 1	500	x	x	x	x	x		
	NV Congressional District 3	500			x	x	x		
	Reno, NV MSA	380	x	x	x	x	x		

State	Name	Summary Level						2004	2004
			2000	2001	2002	2003	2004	Change 2000 to 2004	
NEW HAMPSHIRE	Washoe County	050	x	x	x	x	x		
	<i>state only</i>	040	x	x	x	x	x	x	
	Boston--Worcester--Lawrence, MA--NH--ME--CT CMSA	380	x	x	x	x	x	x	
	Boston, MA--NH PMSA	385	x	x	x	x	x	x	
	Hillsborough County	050	x	x	x	x	x		
	Lawrence, MA--NH PMSA	385	x	x	x	x	x		
	Lowell, MA--NH PMSA	385	x	x	x	x	x		
	NH Congressional District 1	500	x	x	x	x	x		
	NH Congressional District 2	500	x	x	x	x	x		
	Portsmouth--Rochester, NH--ME PMSA	385				x	x		
Rockingham County	050	x	x	x	x	x			
NEW JERSEY	<i>state only</i>	040	x	x	x	x	x	x	
	Atlantic County	050			x	x	x		
	Atlantic--Cape May, NJ PMSA	385	x	x	x	x	x		
	Bergen County	050	x	x	x	x	x		
	Bergen--Passaic, NJ PMSA	385	x	x	x	x	x	x	
	Burlington County	050	x	x	x	x	x		
	Camden County	050	x	x	x	x	x		
	Essex County	050	x	x	x	x	x		
	Gloucester County	050		x	x	x	x		
	Hudson County	050	x	x	x	x	x		
	Jersey City, NJ PMSA	385	x	x	x	x	x		
	Mercer County	050	x	x	x	x	x		
	Middlesex County	050	x	x	x	x	x		
	Middlesex--Somerset--Hunterdon, NJ PMSA	385	x	x	x	x	x	x	

State	Name	Summary Level						2004	2004
			2000	2001	2002	2003	2004	Change 2000 to 2004	
	Monmouth County	050	x	x	x	x	x		
	Monmouth--Ocean, NJ PMSA	385	x	x	x	x	x	x	
	Morris County	050	x	x	x	x	x		
	Newark city	160	x		x	x	x		
	Newark city, Essex County pt.	155	x		x	x	x		
	Newark, NJ PMSA	385	x	x	x	x	x	x	
	NJ Congressional District 1	500	x	x	x	x	x		
	NJ Congressional District 2	500	x	x	x	x	x		
	NJ Congressional District 3	500	x	x	x	x	x		
	NJ Congressional District 4	500	x	x	x	x	x		
	NJ Congressional District 5	500	x	x	x	x	x		
	NJ Congressional District 6	500	x	x	x	x	x		
	NJ Congressional District 7	500	x	x	x	x	x		
	NJ Congressional District 8	500	x	x	x	x	x		
	NJ Congressional District 9	500	x	x	x	x	x		
	NJ Congressional District 10	500	x	x	x	x	x		
	NJ Congressional District 11	500	x	x	x	x	x		
	NJ Congressional District 12	500	x	x	x	x	x		
	NJ Congressional District 13	500	x	x	x	x	x		
	Ocean County	050	x	x	x	x	x		
	Passaic County	050	x	x	x	x	x		
	Philadelphia, PA--NJ PMSA	385	x	x	x	x	x		
	Somerset County	050	x	x	x	x	x		
	Trenton, NJ PMSA	385	x	x	x	x	x		
	Union County	050	x	x	x	x	x		
NEW MEXICO									
	<i>state only</i>	040	x	x	x	x	x	x	
	Albuquerque city	160	x	x	x	x	x		

State	Name	Summary Level						2004	2004
			2000	2001	2002	2003	2004	Change 2000 to 2004	
NEW YORK	Albuquerque city, Bernalillo County pt.	155	x	x	x	x	x		
	Bernalillo County	050	x	x	x	x	x		
	<i>state only</i>	040	x	x	x	x	x	x	
	Albany County	050	x	x	x	x	x		
	Albany--Schenectady--Troy, NY MSA	380	x	x	x	x	x		
	Binghamton, NY MSA	380			x	x	x		
	Bronx borough *	060	x	x	x	x	x	x	
	Bronx County *	001, 050	x	x	x	x	x	x	
	Brookhaven town	060	x	x	x	x	x		
	Brooklyn borough	060	x	x	x	x	x	x	
	Buffalo city	160	x	x	x	x	x		
	Buffalo city, Erie County pt.	155	x	x	x	x	x		
	Buffalo--Niagara Falls, NY MSA	380	x	x	x	x	x	x	
	Clarkstown town *	060	x	x	x	x	x		
	Dutchess County	050	x	x	x	x	x		
	Dutchess County, NY PMSA	385	x	x	x	x	x		
	Erie County	050	x	x	x	x	x		
	Hempstead town	060	x	x	x	x	x		
	Islip town	060	x	x	x	x	x		
	Kings County	050	x	x	x	x	x	x	
	Manhattan borough	060	x	x	x	x	x	x	
	Monroe County	050	x	x	x	x	x		
	Nassau County	050	x	x	x	x	x	x	
	Nassau--Suffolk, NY PMSA	385	x	x	x	x	x	x	
New York city	160	x	x	x	x	x	x		
New York city, Bronx County pt. *	155	x	x	x	x	x	x		
New York city, Kings County pt.	155	x	x	x	x	x	x		

State	Name	Summary Level						2004
			2000	2001	2002	2003	2004	Change 2000 to 2004
	New York city, New York County pt.	155	x	x	x	x	x	x
	New York city, Queens County pt.	155	x	x	x	x	x	x
	New York city, Richmond County pt.	155	x	x	x	x	x	
	New York County	050	x	x	x	x	x	x
	New York, NY PMSA	385	x	x	x	x	x	x
	NY Congressional District 1	500	x	x	x	x	x	
	NY Congressional District 2	500	x	x	x	x	x	
	NY Congressional District 3	500	x	x	x	x	x	
	NY Congressional District 4	500	x	x	x	x	x	
	NY Congressional District 5	500	x	x	x	x	x	
	NY Congressional District 6	500	x	x	x	x	x	
	NY Congressional District 7	500	x	x	x	x	x	
	NY Congressional District 8	500	x	x	x	x	x	
	NY Congressional District 9	500	x	x	x	x	x	
	NY Congressional District 10	500	x	x	x	x	x	
	NY Congressional District 11	500	x	x	x	x	x	
	NY Congressional District 12	500	x	x	x	x	x	
	NY Congressional District 13	500	x	x	x	x	x	
	NY Congressional District 14	500	x	x	x	x	x	
	NY Congressional District 15	500	x	x	x	x	x	
	NY Congressional District 16	500	x	x	x	x	x	
	NY Congressional District 17	500	x	x	x	x	x	
	NY Congressional District 18	500	x	x	x	x	x	
	NY Congressional District 19	500	x	x	x	x	x	
	NY Congressional District 21	500	x	x				
	NY Congressional District 25	500			x	x	x	
	NY Congressional District 27	500			x	x	x	
	NY Congressional District 28	500	x	x	x	x	x	

State	Name	Summary Level						2004	2004
			2000	2001	2002	2003	2004	Change 2000 to 2004	
	NY Congressional District 29	500	x	x					
	NY Congressional District 30	500	x	x					
	Onondaga County	050	x	x	x	x	x		
	Orange County	050	x	x	x	x	x		
	Oyster Bay town	060	x	x	x	x	x		
	Queens borough	060	x	x	x	x	x	x	
	Queens County	050	x	x	x	x	x	x	x
	Ramapo town *	060	x	x	x	x	x	x	
	Richmond County	050	x	x	x	x	x	x	
	Rochester, NY MSA	380	x	x	x	x	x	x	x
	Rockland County *	050	x	x	x	x	x	x	x
	Staten Island borough	060	x	x	x	x	x	x	
	Suffolk County	050	x	x	x	x	x	x	x
	Syracuse, NY MSA	380	x	x	x	x	x	x	
	Utica--Rome, NY MSA	380	x	x	x	x	x	x	
	Westchester County	050	x	x	x	x	x	x	
NORTH CAROLINA									
	<i>state only</i>	040 -State	x	x	x	x	x	x	x
	Charlotte city	160	x	x	x	x	x	x	
	Charlotte city, Mecklenburg County pt.	155	x	x	x	x	x	x	
	Cumberland County	050	x	x	x	x	x	x	
	Fayetteville, NC MSA	380	x	x	x	x	x	x	
	Forsyth County	050	x	x	x	x	x	x	
	Greensboro--Winston-Salem--High Point, NC MSA	380	x	x	x	x	x	x	x
	Guilford County	050	x	x	x	x	x	x	
	Hickory--Morganton--Lenoir, NC MSA	380	x	x	x	x	x	x	
	Mecklenburg County	050	x	x	x	x	x	x	
	NC Congressional District 4	500			x	x	x	x	

State	Name	Summary						2004 Change 2000 to 2004
		Level	2000	2001	2002	2003	2004	
NORTH DAKOTA	Raleigh city	160	x	x	x	x	x	
	Raleigh city, Wake County pt.	155	x	x	x	x	x	
	Raleigh--Durham--Chapel Hill, NC MSA	380	x	x	x	x	x	x
	Wake County	050	x	x	x	x	x	
	<i>state only</i>	040	x	x	x	x	x	x
OHIO	ND Congressional District (at Large)	500	x	x	x	x	x	
	<i>state only</i>	040	x	x	x	x	x	x
	Akron, OH PMSA	385	x	x	x	x	x	
	Butler County	050	x	x	x	x	x	
	Canton--Massillon, OH MSA	380	x	x	x	x	x	
	Cincinnati city	160	x	x	x	x	x	
	Cincinnati city, Hamilton County pt.	155	x	x	x	x	x	
	Cleveland city	160	x	x	x	x	x	
	Cleveland city, Cuyahoga County pt.	155	x	x	x	x	x	
	Cleveland--Akron, OH CMSA	380	x	x	x	x	x	x
	Cleveland--Lorain--Elyria, OH PMSA	385	x	x	x	x	x	x
	Columbus city	160	x	x	x	x	x	
	Columbus city, Franklin County pt. *	155	x	x	x	x	x	
	Cuyahoga County	050	x	x	x	x	x	x
	Dayton--Springfield, OH MSA	380	x	x	x	x	x	
	Franklin County *	001, 050	x	x	x	x	x	x
	Hamilton County	050	x	x	x	x	x	
	Hamilton--Middletown, OH PMSA	385	x	x	x	x	x	
	Lorain County	050	x	x	x	x	x	
	Lucas County	050	x	x	x	x	x	
Mahoning County	050	x		x	x	x		



State	Name	Summary Level						2004
			2000	2001	2002	2003	2004	Change 2000 to 2004
	Montgomery County	050	x	x	x	x	x	
	OH Congressional District 1	500	x	x	x	x	x	
	OH Congressional District 2	500	x	x				
	OH Congressional District 3	500	x	x				
	OH Congressional District 10	500	x	x	x	x	x	
	OH Congressional District 11	500	x	x	x	x	x	
	OH Congressional District 12	500	x	x		x	x	
	OH Congressional District 13	500	x	x	x	x	x	
	OH Congressional District 14	500	x	x	x	x	x	
	OH Congressional District 17	500	x	x	x	x	x	
	OH Congressional District 19	500	x	x				
	Stark County	050	x	x	x	x	x	
	Summit County	050	x	x	x	x	x	
	Toledo city	160	x	x	x	x	x	
	Toledo city, Lucas County pt.	155	x	x	x	x	x	
	Toledo, OH MSA	380	x	x	x	x	x	
	Youngstown--Warren, OH MSA	380	x	x	x	x	x	
OKLAHOMA								
	<i>state only</i>	040	x	x	x	x	x	x
	OK Congressional District 1	500	x	x				
	Oklahoma City city	160	x	x	x	x	x	
	Oklahoma City city, Oklahoma County pt.	155	x	x	x	x	x	
	Oklahoma City, OK MSA	380	x	x	x	x	x	x
	Oklahoma County	050	x	x	x	x	x	
	Tulsa city	160	x	x	x	x	x	
	Tulsa city, Tulsa County pt.	155	x	x	x	x	x	
	Tulsa County	050	x	x	x	x	x	
	Tulsa, OK MSA	380	x	x	x	x	x	

<b>State</b>	<b>Name</b>	<b>Summary Level</b>	<b>2000</b>	<b>2001</b>	<b>2002</b>	<b>2003</b>	<b>2004</b>	<b>2004 Change 2000 to 2004</b>
OREGON								
	<i>state only</i>	040	x	x	x	x	x	x
	Clackamas County	050	x	x	x	x	x	
	Eugene--Springfield, OR MSA	380	x	x	x	x	x	
	Gresham city *	160	x	x	x	x	x	
	Lane County	050	x	x	x	x	x	
	Marion County	050	x	x	x	x	x	
	Multnomah County *	050	x	x	x	x	x	x
	OR Congressional District 3	500	x	x	x	x	x	
	Portland city	160	x	x	x	x	x	x
	Portland city, Multnomah County pt. *	155	x	x	x	x	x	x
	Salem, OR PMSA	385	x	x	x	x	x	
	Washington County	050	x	x	x	x	x	
PENNSYLVANIA								
	<i>state only</i>	040	x	x	x	x	x	x
	Allegheny County	050	x	x	x	x	x	x
	Allentown--Bethlehem--Easton, PA MSA	380	x	x	x	x	x	
	Berks County	050	x	x	x	x	x	
	Bucks County	050	x	x	x	x	x	
	Chester County	050	x	x	x	x	x	
	Dauphin County	050			x	x	x	
	Delaware County	050	x	x	x	x	x	
	Erie County	050	x	x	x	x	x	
	Erie, PA MSA	380	x	x	x	x	x	
	Harrisburg--Lebanon--Carlisle, PA MSA	380	x	x	x	x	x	
	Lancaster County	050	x	x	x	x	x	
	Lancaster, PA MSA	380	x	x	x	x	x	
	Lehigh County	050	x	x	x	x	x	

State	Name	Summary Level						2004
			2000	2001	2002	2003	2004	Change 2000 to 2004
	Luzerne County	050	x	x	x	x	x	
	Montgomery County	050	x	x	x	x	x	
	Northampton County	050	x	x	x	x	x	
	PA Congressional District 1	500	x	x	x	x	x	
	PA Congressional District 2	500	x	x	x	x	x	
	PA Congressional District 3	500	x	x				
	PA Congressional District 6	500			x	x	x	
	PA Congressional District 7	500	x	x	x	x	x	
	PA Congressional District 8	500	x	x	x	x	x	
	PA Congressional District 11	500			x	x	x	
	PA Congressional District 13	500	x	x	x	x	x	
	PA Congressional District 14	500	x	x	x	x	x	
	PA Congressional District 15	500	x	x	x	x	x	
	PA Congressional District 16	500	x	x	x	x	x	
	PA Congressional District 17	500	x	x	x	x	x	
	PA Congressional District 18	500	x	x	x	x	x	
	Philadelphia city	160	x	x	x	x	x	x
	Philadelphia city, Philadelphia County pt.	155	x	x	x	x	x	x
	Philadelphia County	050	x	x	x	x	x	x
	Philadelphia, PA--NJ PMSA	385	x	x	x	x	x	x
	Pittsburgh city	160	x	x	x	x	x	
	Pittsburgh city, Allegheny County pt.	155	x	x	x	x	x	
	Pittsburgh, PA MSA	380	x	x	x	x	x	x
	Reading, PA MSA	380	x	x	x	x	x	
	Schuylkill County *	001, 050	x	x	x	x	x	
	Scranton--Wilkes-Barre--Hazleton, PA MSA	380	x	x	x	x	x	
	Westmoreland County	050	x	x	x	x	x	
	York County	050	x	x	x	x	x	

<b>State</b>	<b>Name</b>	<b>Summary Level</b>	<b>2000</b>	<b>2001</b>	<b>2002</b>	<b>2003</b>	<b>2004</b>	<b>2004 Change 2000 to 2004</b>
	York, PA MSA	380	x	x	x	x	x	
RHODE ISLAND								
	<i>state only</i>	040	x	x	x	x	x	x
	New London--Norwich, CT--RI MSA	380	x	x				
	Providence County	050	x	x	x	x	x	
	Providence--Fall River--Warwick, RI--MA MSA	380	x	x	x	x	x	x
	RI Congressional District 1	500	x	x	x	x	x	
	RI Congressional District 2	500	x	x	x	x	x	
SOUTH CAROLINA								
	<i>state only</i>	040	x	x	x	x	x	x
	Augusta--Aiken, GA--SC MSA	380	x	x	x	x	x	
	Charleston County	050	x	x	x	x	x	
	Charleston--North Charleston, SC MSA	380	x	x	x	x	x	
	Columbia, SC MSA	380	x	x	x	x	x	
	Greenville County	050	x	x	x	x	x	
	Greenville--Spartanburg--Anderson, SC MSA	380	x	x	x	x	x	
	Richland County	050	x	x	x	x	x	
	Spartanburg County	050			x	x	x	
SOUTH DAKOTA								
	<i>state only</i>	040	x	x	x	x	x	x
	SD Congressional District (at Large)	500	x	x	x	x	x	
TENNESSEE								
	<i>state only</i>	040	x	x	x	x	x	x
	Davidson County	050	x	x	x	x	x	
	Hamilton County	050	x	x	x	x	x	
	Johnson City--Kingsport--Bristol, TN--VA MSA	380	x	x	x	x	x	
	Knox County	050	x	x	x	x	x	
	Knoxville, TN MSA	380	x	x	x	x	x	

State	Name	Summary						2004 Change 2000 to 2004
		Level	2000	2001	2002	2003	2004	
	Memphis city	160	x	x	x	x	x	
	Memphis city, Shelby County pt.	155	x	x	x	x	x	
	Nashville, TN MSA	380	x	x	x	x	x	x
	Nashville-Davidson (balance)	160	x	x	x	x	x	
	Nashville-Davidson (balance), Davidson County pt.	155	x	x	x	x	x	
	Sevier County *	001, 050	x	x	x	x	x	
	Shelby County	050	x	x	x	x	x	
	TN Congressional District 5	500	x	x	x	x	x	
	TN Congressional District 9	500	x	x	x	x	x	
TEXAS								
	<i>state only</i>	040	x	x	x	x	x	x
	Arlington city	160	x	x	x	x	x	
	Arlington city, Tarrant County pt.	155	x	x	x	x	x	
	Austin city	160	x	x	x	x	x	
	Austin city, Travis County pt.	155	x	x	x	x	x	
	Austin--San Marcos, TX MSA	380	x	x	x	x	x	x
	Baytown city, Harris County pt. *	155		x	x	x	x	
	Beaumont--Port Arthur, TX MSA	380	x	x	x	x	x	
	Bell County	050					x	
	Bexar County	050	x	x	x	x	x	x
	Brownsville--Harlingen--San Benito, TX MSA	380	x	x	x	x	x	
	Cameron County	050	x	x	x	x	x	
	Collin County	050	x	x	x	x	x	
	Corpus Christi city	160		x	x	x	x	
	Corpus Christi city, Nueces County pt.	155	x	x	x	x	x	
	Corpus Christi, TX MSA	380	x	x	x	x	x	
	Dallas city	160	x	x	x	x	x	x
	Dallas city, Dallas County pt.	155	x	x	x	x	x	x

State	Name	Summary Level						2004
			2000	2001	2002	2003	2004	Change 2000 to 2004
	Dallas County	050	x	x	x	x	x	x
	Dallas, TX PMSA	385	x	x	x	x	x	x
	Dallas--Fort Worth, TX CMSA	380	x	x	x	x	x	x
	Denton County	050	x	x	x	x	x	
	El Paso city	160	x	x	x	x	x	
	El Paso city, El Paso County pt.	155	x	x	x	x	x	
	El Paso County	050	x	x	x	x	x	
	El Paso, TX MSA	380	x	x	x	x	x	
	Fort Bend-Harris *	001	x	x	x	x	x	x
	Fort Bend County *	050	x	x	x	x	x	x
	Fort Worth city	160	x	x	x	x	x	
	Fort Worth city, Tarrant County pt.	155	x	x	x	x	x	
	Fort Worth--Arlington, TX PMSA	385	x	x	x	x	x	x
	Galveston County	050		x	x	x	x	
	Galveston--Texas City, TX PMSA	385		x	x	x	x	
	Harris County	050	x	x	x	x	x	x
	Hidalgo County	050	x	x	x	x	x	
	Houston city *	160	x	x	x	x	x	x
	Houston city, Harris County pt. *	155	x	x	x	x	x	x
	Houston, TX PMSA	385	x	x	x	x	x	x
	Killeen--Temple, TX MSA	380	x	x	x	x	x	
	Lubbock County	050				x	x	
	Lubbock, TX MSA	380				x	x	
	McAllen--Edinburg--Mission, TX MSA	380	x	x	x	x	x	
	Missouri City city	160					x	
	Montgomery County	050	x	x	x	x	x	
	Nueces County	050	x	x	x	x	x	
	Pasadena city *	160	x	x	x	x	x	

State	Name	Summary Level						2004	2004
			2000	2001	2002	2003	2004	Change 2000 to 2004	
	San Antonio city	160	x	x	x	x	x	x	x
	San Antonio city, Bexar County pt.	155	x	x	x	x	x	x	x
	San Antonio, TX MSA	380	x	x	x	x	x	x	x
	Starr-Zapata *	001	x	x	x	x	x	x	
	Sugar Land city *	160			x	x	x	x	
	Tarrant County	050	x	x	x	x	x	x	x
	Travis County	050	x	x	x	x	x	x	
	TX Congressional District 2	500						x	
	TX Congressional District 3	500	x	x	x	x	x	x	
	TX Congressional District 6	500	x	x					
	TX Congressional District 7	500	x	x	x	x	x	x	
	TX Congressional District 8	500			x	x			
	TX Congressional District 9	500	x	x	x	x	x	x	
	TX Congressional District 10	500	x	x	x	x			
	TX Congressional District 12	500	x	x	x	x			
	TX Congressional District 16	500	x	x	x	x	x	x	
	TX Congressional District 18	500	x	x	x	x	x	x	
	TX Congressional District 20	500	x	x	x	x	x	x	
	TX Congressional District 24	500			x	x	x		
	TX Congressional District 25	500	x	x	x	x			
	TX Congressional District 26	500	x	x					
	TX Congressional District 29	500	x	x	x	x	x	x	
	TX Congressional District 30	500	x	x	x	x	x	x	
	TX Congressional District 32	500			x	x	x	x	
	Williamson County	050		x	x	x	x	x	
UTAH	<i>state only</i>	040	x	x	x	x	x	x	x
	Davis County	050				x	x		

State	Name	Summary					2004 Change 2000 to 2004	
		Level	2000	2001	2002	2003		2004
	Provo--Orem, UT MSA	380	x	x	x	x	x	
	Salt Lake City--Ogden, UT MSA	380	x	x	x	x	x	x
	Salt Lake County	050	x	x	x	x	x	
	UT Congressional District 2	500	x	x				
	Utah County	050	x	x	x	x	x	
VERMONT								
	<i>state only</i>	040	x	x	x	x	x	x
	VT Congressional District (at Large)	500	x	x	x	x	x	
VIRGINIA								
	<i>state only</i>	040	x	x	x	x	x	x
	Chesterfield County	050	x	x	x	x	x	
	Fairfax County	050	x	x	x	x	x	
	Henrico County	050	x	x	x	x	x	
	Johnson City--Kingsport--Bristol, TN--VA MSA	380	x	x	x	x	x	
	Prince William County	050	x	x	x	x	x	
	Richmond--Petersburg, VA MSA	380	x	x	x	x	x	x
	VA Congressional District 2	500	x	x				
	VA Congressional District 8	500	x	x	x	x	x	
	VA Congressional District 11	500	x	x	x	x	x	
	Virginia Beach city	050, 160	x	x	x	x	x	
	Virginia Beach city, Virginia Beach city pt.	155	x	x	x	x	x	
WASHINGTON								
	<i>state only</i>	040	x	x	x	x	x	x
	Clark County	050	x	x	x	x	x	
	King County	050	x	x	x	x	x	x
	Pierce County	050	x	x	x	x	x	
	Seattle city	160	x	x	x	x	x	
	Seattle city, King County pt.	155	x	x	x	x	x	



State	Name	Summary						2004 Change 2000 to 2004
		Level	2000	2001	2002	2003	2004	
	Seattle--Bellevue--Everett, WA PMSA	385	x	x	x	x	x	x
	Snohomish County	050	x	x	x	x	x	
	Spokane County	050	x	x	x	x	x	
	Spokane, WA MSA	380	x	x	x	x	x	
	Tacoma, WA PMSA	385	x	x	x	x	x	
	WA Congressional District 7	500	x	x	x	x	x	
	WA Congressional District 8	500	x	x	x	x	x	
	Yakima County *	050	x	x	x	x	x	
	Yakima city *	160	x	x	x	x	x	
WEST VIRGINIA								
	<i>state only</i>	040	x	x	x	x	x	x
WISCONSIN								
	<i>state only</i>	040	x	x	x	x	x	x
	Appleton--Oshkosh--Neenah, WI MSA	380	x	x	x	x	x	
	Dane County	050	x	x	x	x	x	
	Madison, WI MSA	380	x	x	x	x	x	
	Milwaukee city	160	x	x	x	x	x	
	Milwaukee city, Milwaukee County pt.	155	x	x	x	x	x	
	Milwaukee County	050	x	x	x	x	x	
	Milwaukee--Waukesha, WI PMSA	385	x	x	x	x	x	x
	Waukesha County	050	x	x	x	x	x	
	WI Congressional District 4	500	x	x	x	x	x	
	WI Congressional District 5	500	x	x				
WYOMING								
	<i>state only</i>	040	x	x	x	x	x	x
	WY Congressional District (at Large)	500	x	x	x	x	x	
Multi-state areas								
	Augusta--Aiken, GA--SC MSA	380	x	x	x	x	x	

<b>State</b>	<b>Name</b>	<b>Summary Level</b>	<b>2000</b>	<b>2001</b>	<b>2002</b>	<b>2003</b>	<b>2004</b>	<b>2004 Change 2000 to 2004</b>
	Boston, MA--NH PMSA	385	x	x	x	x	x	x
	Boston--Worcester--Lawrence, MA--NH--ME--CT CMSA	380	x	x	x	x	x	x
	Davenport--Moline--Rock Island, IA--IL MSA	380	x	x	x	x	x	
	Johnson City--Kingsport--Bristol, TN--VA MSA	380	x	x	x	x	x	
	Kansas City, MO--KS MSA	380	x	x	x	x	x	x
	Lawrence, MA--NH PMSA	385	x	x	x	x	x	
	Lowell, MA--NH PMSA	385	x	x	x	x	x	
	New London--Norwich, CT--RI MSA	380	x	x				
	Philadelphia, PA--NJ PMSA	385	x	x	x	x	x	x
	Providence--Fall River--Warwick, RI--MA MSA	380	x	x	x	x	x	x
	St. Louis, MO--IL MSA	380	x	x	x	x	x	x
	Worcester, MA--CT PMSA	385	x	x	x	x	x	

<b>State</b>	<b>Name</b>	<b>Summary Level</b>	<b>2000</b>	<b>2001</b>	<b>2002</b>	<b>2003</b>	<b>2004</b>	<b>2004 Change 2000 to 2004</b>
--------------	-------------	--------------------------	-------------	-------------	-------------	-------------	-------------	---

## Equivalent Geographies

Many geographic areas appear in the 2003 American Community Survey under a variety of geographic summary levels. These “equivalent” geographies are grouped together in the list below.

<u>State</u>	<u>Name</u>	<u>Summary Level</u>	
ALASKA	Alaska	040	
	AK Congressional District (at Large)	500 - Cong. District	
	Anchorage Municipality	050	
	Anchorage municipality	160	
	Anchorage municipality, Anchorage Municipality pt.	155	
	Anchorage, AK MSA	380	
ARIZONA	Mesa city	160	
	Mesa city, Maricopa County pt.	155	
	Phoenix city	160	
	Phoenix city, Maricopa County pt.	155	
	Pima County	050	
	Tucson, AZ MSA	380	
	Tucson city	160	
Tucson city, Pima County pt.	155		
CALIFORNIA	Anaheim city	160	
	Anaheim city, Orange County pt.	155	
	Fresno city	160	
	Fresno city, Fresno County pt.	155	
	Kern County	050	
	Bakersfield, CA MSA	380	
	Long Beach city	160	
	Long Beach city, Los Angeles County pt.	155	
	Los Angeles County	050	
	Los Angeles--Long Beach, CA PMSA	385	
Los Angeles city	160		
Los Angeles city, Los Angeles County pt.	155		
Monterey County	050		
Salinas, CA MSA	380		

<u>State</u>	<u>Name</u>	<u>Summary Level</u>
	Oakland city	160
	Oakland city, Alameda County pt.	155
	Orange County	050
	Orange County, CA PMSA	385
	Riverside city	160
	Riverside city, Riverside County pt.	155
	Sacramento city	160
	Sacramento city, Sacramento County pt.	155
	San Diego city	160
	San Diego city, San Diego County pt.	155
	San Diego County	050
	San Diego, CA MSA	380
	San Joaquin County	050
	Stockton--Lodi, CA MSA	380
	San Jose city	160
	San Jose city, Santa Clara County pt.	155
	San Francisco County	050
	San Francisco city	160
	San Francisco city, San Francisco County pt	155
	Santa Barbara County	050
	Santa Barbara--Santa Maria--Lompoc, CA MSA	380
	Santa Clara County	050
	San Jose, CA PMSA	385
	Santa Ana city	160
	Santa Ana city, Orange County pt.	155
	Sonoma County	050
	Santa Rosa, CA PMSA	385
	Stanislaus County	050
	Modesto, CA MSA	380
	Stockton city	160
	Stockton city, San Joaquin County pt.	155
	Tulare County	050
	Visalia--Tulare--Porterville, CA MSA	380

<u>State</u>	<u>Name</u>	<u>Summary Level</u>
	Ventura County	050
	Ventura, CA PMSA	385
COLORADO	Boulder County	050
	Boulder--Longmont, CO PMSA	385
	Colorado Springs city	160
	Colorado Springs city, El Paso County pt.	155
	Denver city	160
	Denver city, Denver County pt.	155
	Denver County	050
	El Paso County	050
	Colorado Springs, CO MSA	380
DELAWARE	Delaware	040
	DE Congressional District (at Large)	500 - Cong. District
DISTRICT OF COLUMBIA	DC Delegate District (at Large)	500 - Cong. District
	District of Columbia	050
	Washington city	160
	Washington city, District of Columbia pt.	155
FLORIDA	Brevard County	050
	Melbourne--Titusville--Palm Bay, FL MSA	380
	Broward County	050
	Fort Lauderdale, FL PMSA	385
	Jacksonville city	160
	Jacksonville city, Duval County pt.	155
	Lee County	050
	Fort Myers--Cape Coral, FL MSA	380
	Miami city	160
	Miami city, Miami-Dade County pt.	155
	Miami-Dade County	050
	Miami, FL PMSA	385
	Palm Beach County	050
	West Palm Beach--Boca Raton, FL MSA	380
	Polk County	050
	Lakeland--Winter Haven, FL MSA	380
	St. Petersburg city	160
	St. Petersburg city, Pinellas County pt.	155

<u>State</u>	<u>Name</u>	<u>Summary Level</u>
	Tampa city	160
	Tampa city, Hillsborough County pt.	155
HAWAII	Honolulu CDP	160
	Honolulu CDP, Honolulu County pt.	155
	Honolulu County	050
	Honolulu, HI MSA	380
ILLINOIS	Chicago city	060
	Chicago city	160
	Chicago city, Cook County pt.	155
INDIANA	Indianapolis city (balance)	160
	Indianapolis city (balance), Marion County pt.	155
	St. Joseph County	050
	South Bend, IN MSA	380
KANSAS	Wichita city	060
	Wichita city	160
	Wichita city, Sedgwick County pt.	155
LOUISIANA	New Orleans city	160
	New Orleans city, Orleans Parish pt.	155
	Orleans Parish	050
MARYLAND	Baltimore city	050
	Baltimore city	160
	Baltimore city, Baltimore city pt.	155
MASSACHUSETTS	Boston city	060
	Boston city	160
	Boston city, Suffolk County pt.	155
	Springfield city	060
	Springfield city	160
MICHIGAN	Detroit city	060
	Detroit city	160
	Detroit city, Wayne County pt.	155
	Genesee County	050
	Flint, MI PMSA	385
MINNESOTA	Minneapolis city	060
	Minneapolis city	160
	Minneapolis city, Hennepin County pt.	155

<u>State</u>	<u>Name</u>	<u>Summary Level</u>
	St. Paul city	060
	St. Paul city	160
	St. Paul city, Ramsey County pt.	155
MISSOURI	St. Louis city	050
	St. Louis city	060
	St. Louis city	160
	St. Louis city, St. Louis city pt.	155
MONTANA	Montana	040
	MT Congressional District (at Large)	500 - Cong. District
NEBRASKA	Omaha city	060
	Omaha city	160
	Omaha city, Douglas County pt.	155
NEVADA	Las Vegas city	160
	Las Vegas city, Clark County pt.	155
	Washoe County	050
	Reno, NV MSA	380
NEW JERSEY	Mercer County	050
	Trenton, NJ PMSA	385
	Hudson County	050
	Jersey city, NJ PMSA	385
	Newark city	060
	Newark city	160
	Newark city, Essex County pt.	155
NEW MEXICO	Albuquerque city	160
	Albuquerque city, Bernalillo County pt.	155
NEW YORK	Bronx borough	060
	Bronx County	050
	New York city, Bronx County pt.	155
	Brooklyn borough	060
	Kings County	050
	New York city, Kings County pt.	155
	Buffalo city	060
	Buffalo city	160
	Buffalo city, Erie County pt.	155
	Dutchess County	050
	Dutchess County, NY PMSA	385



<u>State</u>	<u>Name</u>	<u>Summary Level</u>
	Manhattan borough	060
	New York city, New York County pt.	155
	New York County	050
	New York city, Queens County pt.	155
	Queens borough	060
	Queens County	050
	New York city, Richmond County pt.	155
	Richmond County	050
	Staten Island borough	060
NORTH CAROLINA	Charlotte city	160
	Charlotte city, Mecklenburg County pt.	155
	Cumberland County	050
	Fayetteville, NC MSA	380
	Raleigh city	160
	Raleigh city, Wake County pt.	155
NORTH DAKOTA	North Dakota	040
	ND Congressional District (at Large)	500 - Cong. District
OHIO	Butler County	050
	Hamilton--Middletown, OH PMSA	385
	Cincinnati city	060
	Cincinnati city	160
	Cincinnati city, Hamilton County pt.	155
	Cleveland city	060
	Cleveland city	160
	Cleveland city, Cuyahoga County pt.	155
	Columbus city	060
	Columbus city, Franklin County pt.	155
	Toledo city	060
	Toledo city	160
	Toledo city, Lucas County pt.	155
OREGON	Lane County	050
	Eugene--Springfield, OR MSA	380
PENNSYLVANIA	Berks County	050
	Reading, PA MSA	380

<u>State</u>	<u>Name</u>	<u>Summary Level</u>
	Erie County	050
	Erie, PA MSA	380
	Lancaster County	050
	Lancaster, PA MSA	380
	Philadelphia city	060
	Philadelphia city	160
	Philadelphia city, Philadelphia County pt.	155
	Philadelphia County	050
	Pittsburgh city	060
	Pittsburgh city	160
	Pittsburgh city, Allegheny County pt.	155
	York County	050
	York, PA MSA	380
SOUTH DAKOTA	South Dakota	040
	SD Congressional District (at Large)	500 - Cong. District
TENNESSEE	Memphis city	160
	Memphis city, Shelby County pt.	155
	Nashville-Davidson (balance)	160
	Nashville-Davidson (balance), Davidson County pt.	155
TEXAS	Arlington city	160
	Arlington city, Tarrant County pt.	155
	Corpus Christi city	160
	Corpus Christi city, Nueces County pt.	155
	Cameron County	050
	Brownsville--Harlingen--San Benito, TX MSA	380
	El Paso city	160
	El Paso city, El Paso County pt.	155
	El Paso County	050
	El Paso, TX MSA	380
	Fort Worth city	160
	Fort Worth city, Tarrant County pt.	155
	Galveston County	050
	Galveston--Texas City, TX PMSA	385

<u>State</u>	<u>Name</u>	<u>Summary Level</u>
	Hidalgo County	050
	McAllen--Edinburg--Mission, TX MSA	380
	San Antonio city	160
	San Antonio city, Bexar County pt.	155
UTAH	Utah County	050
	Provo--Orem, UT MSA	380
VERMONT	Vermont	040
	VT Congressional District (at Large)	500 - Cong. District
VIRGINIA	Virginia Beach city	050
	Virginia Beach city	160
	Virginia Beach city, Virginia Beach city pt.	155
WASHINGTON	Pierce County	050
	Tacoma, WA PMSA	385
	Seattle city	160
	Seattle city, King County pt.	155
	Spokane County	050
	Spokane, WA MSA	380
WISCONSIN	Dane County	050
	Madison, WI MSA	380
	Milwaukee city	060
	Milwaukee city	160
	Milwaukee city, Milwaukee County pt.	155
WYOMING	Wyoming	040
	WY Congressional District (at Large)	500 - Cong. District

## **Glossary of Geographic Terms**

**Congressional district** – An area established by State officials or the courts for the purpose of electing a person to the U.S. House of Representatives. Within each State, these areas must contain, as nearly as possible, an equal number of inhabitants. The number of Congressional districts in each State may change after each decennial census, and the boundaries may be changed more than once during a decade.

**Consolidated metropolitan statistical area (CMSA)** – A geographic entity defined by the Federal Office of Management and Budget (OMB) for use by Federal statistical agencies. An area becomes a CMSA if it meets the requirements to qualify as a metropolitan statistical area (MSA), has a population of 1,000,000 or more, if component parts are recognized as primary statistical metropolitan areas (PMSAs), and local opinion favors the designation. Whole counties are components of CMSAs outside of New England, where they are composed of cities and towns instead.

**County** – A type of governmental unit that is the primary legal subdivision of every State except Alaska and Louisiana; also, a type of functioning MCD found in American Samoa. The county equivalent in Alaska is called a Municipality, while the county equivalent in Louisiana is called a Parrish.

**County subdivision** – A legal or statistical division of a county recognized by the Census Bureau for data presentation.

**Metropolitan statistical area (MSA)** – A geographic entity, defined by the Federal OMB for use by Federal statistical agencies, based on the concept of a core area with a large population nucleus, plus adjacent communities having a high degree of economic and social integration with that core. Qualification of an MSA requires the presence of a city with 50,000 or more inhabitants, or the presence of a UA and a total population of at least 100,000 (75,000 in New England). The county or counties containing the largest city and surrounding densely settled territory are central counties of the MSA. Additional outlying counties qualify to be included in the MSA by meeting certain other criteria of metropolitan character, such as a specified minimum population density or percentage of the population that is urban. MSAs in New England are defined in terms of cities and towns, following rules concerning commuting and population density.

**Minor Civil Division (MCD)** – A type of governmental unit that is the primary legal subdivision of a county in 28 States, created to govern or administer an area rather than a specific population. The several types of MCDs are identified in terms such as town, township, and district, and include both functioning and nonfunctioning governmental units. Many MCDs represent local, general-purpose governmental units, which makes them required areas for presentation of decennial census data. *See also county subdivision.*

**Place** – A concentration of population either legally bounded as an incorporated place, or identified by the Census Bureau as a Census designated place.

Incorporated Place – All incorporated places recognized legally as in existence under the laws of their respective states as cities, boroughs, towns, and villages, with the following exceptions: the towns in the New England states, New York, and Wisconsin, and the boroughs in New York are recognized as minor civil divisions for census purposes; the boroughs in Alaska are county equivalents.

Census Designated Place (CDP) – A statistical entity, defined for each decennial census according to Census Bureau guidelines, comprising a densely settled concentration of population that is not within an incorporated place, but is locally identified by a name. CDPs are delineated cooperatively by state and local officials and the Census Bureau, following Census Bureau guidelines. These entities were called unincorporated places for the 1940 through 1970 censuses.

**Primary metropolitan statistical area (PMSA)** – A geographic entity defined by the Federal OMB for use by Federal statistical agencies. If an area meets the requirements to qualify as a metropolitan statistical area (MSA) and has a population of one million or more, two or more PMSAs may be defined within it if statistical criteria are met and local opinion is in favor. A PMSA consists of a large urbanized county, or a cluster of such counties (cities and towns in New England) that have substantial commuting interchange. When one or more PMSAs have been recognized, the balance of the original, larger area becomes an additional PMSA; the larger area of which they are components then is designated a consolidated metropolitan statistical area (CMSA).

**State** – A type of governmental unit that is the primary legal subdivision of the United States; a functioning county equivalent in Palau, where it also serves as a nonfunctioning MCD.

For more information about the Census Bureau's statistical areas, geographic concepts or terminology, please reference the Geographic Areas Reference Manual (<http://www.census.gov/geo/www/garm.html>), published by the U.S. Census Bureau.