

Limited Service Eating Places

NAICS 72221

*Economic Census Facts:

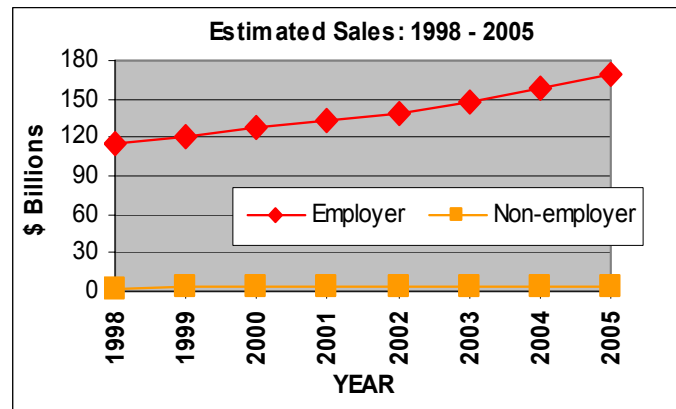
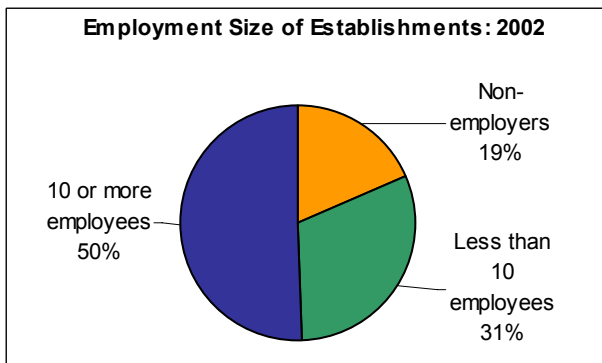
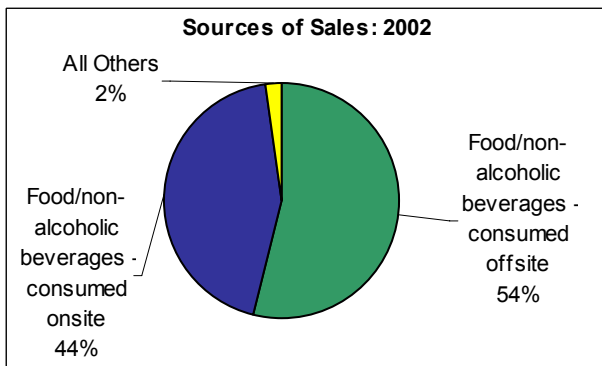
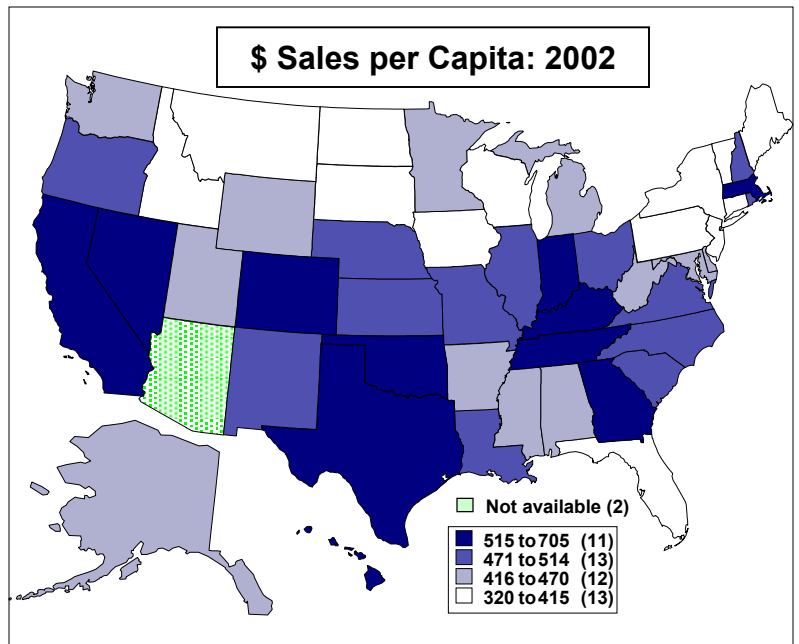
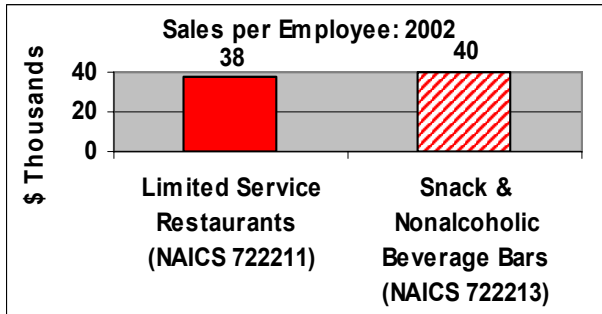
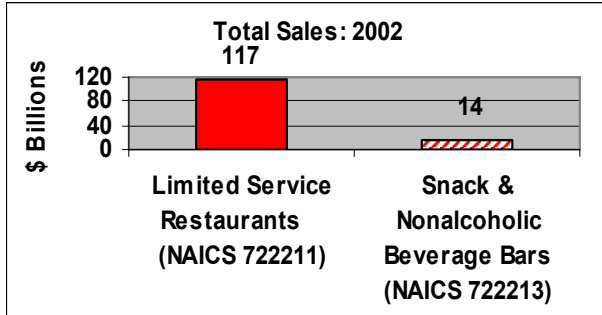
	2002	1997
Sales (Bil \$)	\$135.3	\$107.8
Payroll (Bil \$)	\$35.4	\$27.5
Establishments	228,789	214,774
Employees	3,526,264	3,327,001

DID YOU KNOW?

Eating and drinking places of all types averaged

\$1,115

in sales for every American in 2002.



business.census.gov

* Unless otherwise noted, includes only employer establishments.



OFFICIAL 5 YEAR MEASURE OF AMERICAN BUSINESS