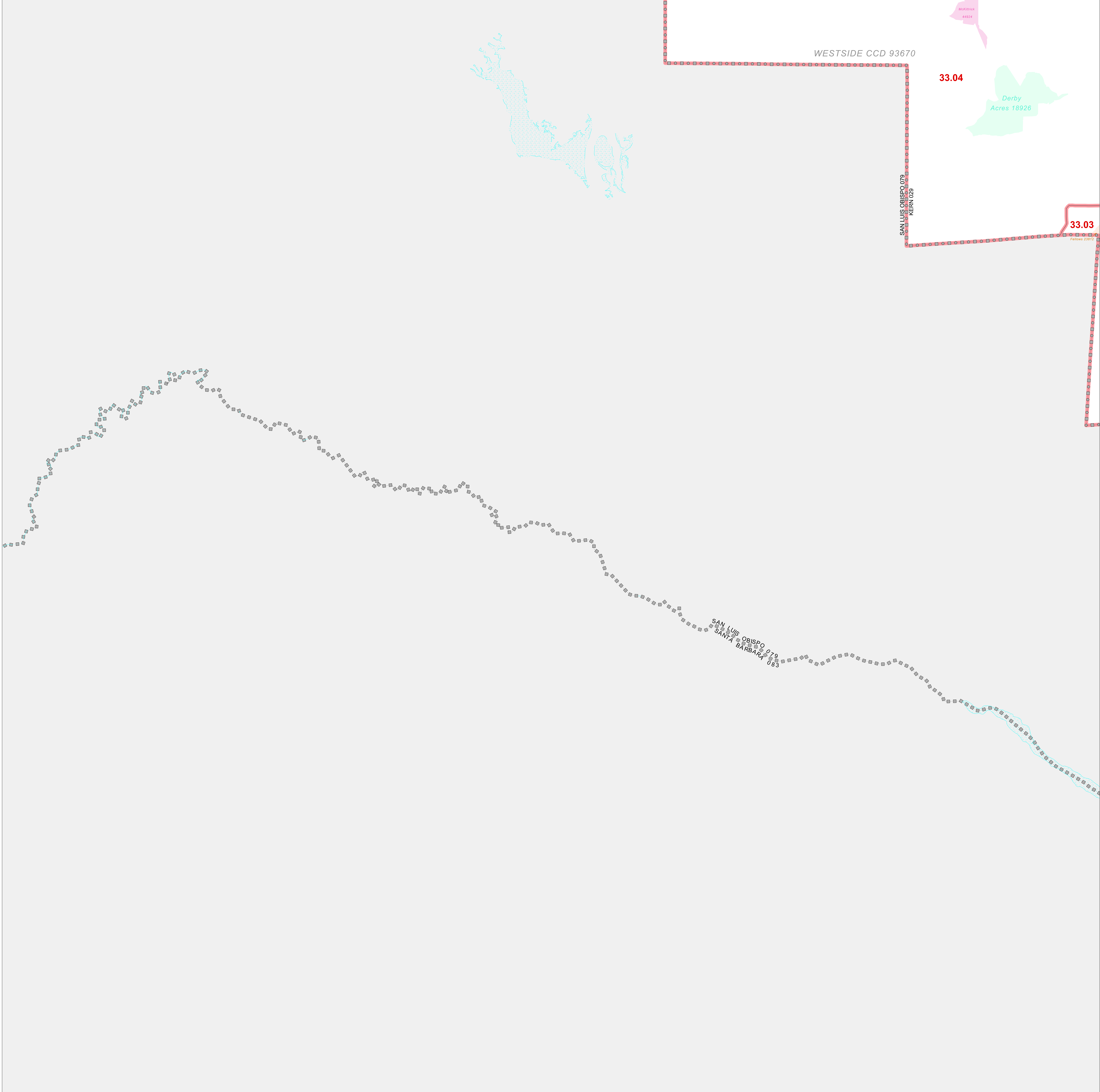


CENSUS TRACT OUTLINE MAP (CENSUS 2000)

35 294405N
120 208933W

35 294405N
119 553022W



ABBREVIATED LEGEND

| SYMBOL | NAME STYLE |
|---------|-------------------------|
| ☆☆☆☆☆ | INTERNATIONAL |
| ☆☆☆☆☆ | AIR (FEDERAL) |
| ☆☆☆☆☆ | Trust Land |
| ◇◇◇◇◇ | OTSA / TDSA |
| ◇◇◇◇◇ | TRIBAL SUBDIVISION |
| /////// | AIR (State) |
| ◇◇◇◇◇ | SDA/SA |
| ##### | STATE |
| ##### | COUNTY |
| ##### | CENSUS COUNTY DIV. |
| ##### | Consolidated City |
| ##### | Incorporated Place |
| ##### | Census Designated Place |
| ##### | Census Tract |

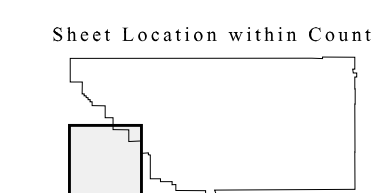
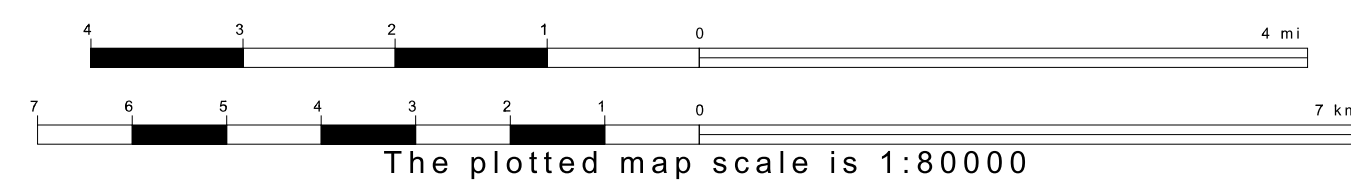
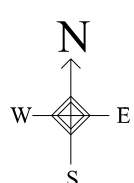
Abbreviation Reference: AIR = American Indian Reservation; Trust Land = OTF-Reservation Trust Land; OTSA = Oklahoma Tribal Statistical Area; TDSA = Tribal Designated Statistical Area; Tribal Subdivision = American Indian Tribal Subdivision; SDA/SA = State Designated American Indian Statistical Area

| FEATURES | FEATURES |
|--------------------|---------------------|
| All Roads | Stream/Shoreline |
| Spur Road | Intermittent Stream |
| Flow/Power Line | River/Lake |
| Physical Feature | Glacier |
| Navigable Boundary | |
| Military | |

Inset Out Area

34 763250N
120 208933W

34 763250N
119 553022W



Key to Adjacent Sheets

| | |
|---|---|
| 1 | 2 |
| 5 | 6 |

ST: California (06)
COU: Kern (029)
SHEET 5 OF 8 PARENT SHEETS

