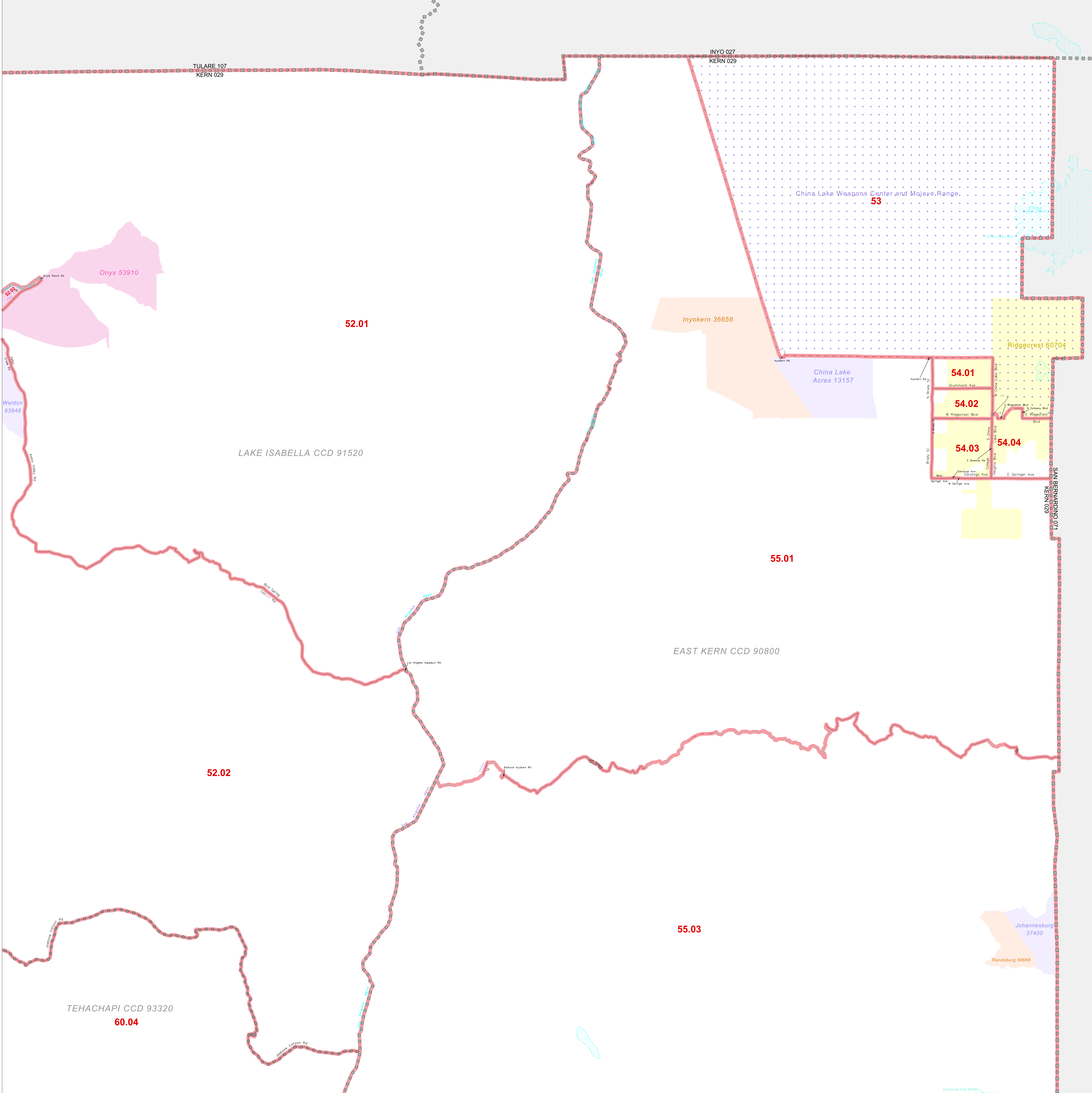


CENSUS TRACT OUTLINE MAP (CENSUS 2000)

35 825561N
118 257342W

35 825561N
117 809512W



ABBREVIATED LEGEND

SYMBOL	NAME STYLE
*****	INTERNATIONAL
*****	AIR (FEDERAL)
*****	Trust Land
*****	OTSA / TDSA
*****	TRIBAL SUBDIVISION
*****	AIR (State)
*****	SDA/SA
*****	STATE
*****	COUNTY
*****	CENSUS COUNTY DIV.
*****	Consolidated City
*****	Incorporated Place
*****	Census Designated Place
*****	Census Tract

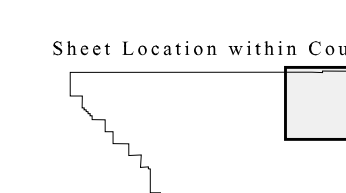
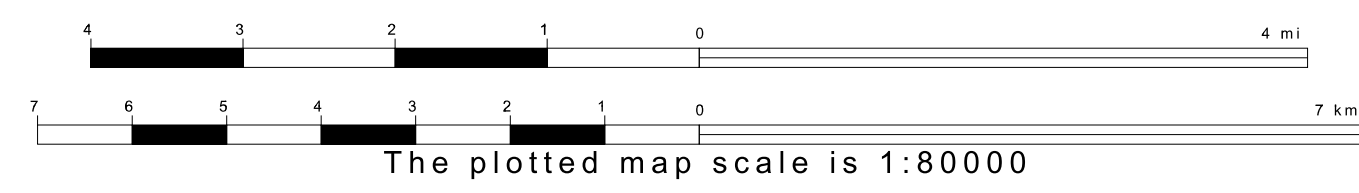
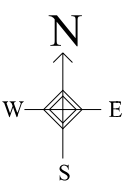
Abbreviation Reference: AIR = American Indian Reservation; Trust Land = OTF-Reservation Trust Land; OTSA = Oklahoma Tribal Statistical Area; TDSA = Tribal Designated Statistical Area; Tribal Subdivision = American Indian Tribal Subdivision; SDA/SA = State Designated American Indian Statistical Area

FEATURES	FEATURES
All Roads	Stream/Shareline
Spur Road	Intermittent Stream
Play Power Line	River/Lake
Physical Feature	Glacier
Navigable Boundary	
Military	

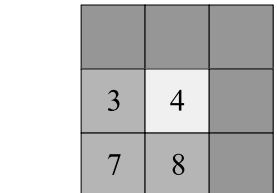
Inset Out Area

35 294405N
118 257342W

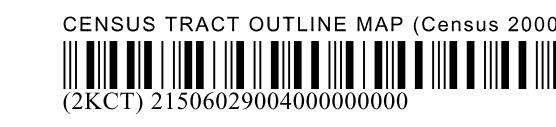
35 374405N
117 809512W



Key to Adjacent Sheets



ST: California (06)
COU: Kern (029)
SHEET 4 OF 8 PARENT SHEETS



All legal boundaries and names are as of January 1, 2000. The boundaries shown on this map are for Census Bureau statistical data collection and tabulation purposes only; their depiction and designation for statistical purposes does not constitute a determination of jurisdictional authority or rights of ownership or entitlement. U.S. DEPARTMENT OF COMMERCE Economics and Statistics Administration U.S. Census Bureau