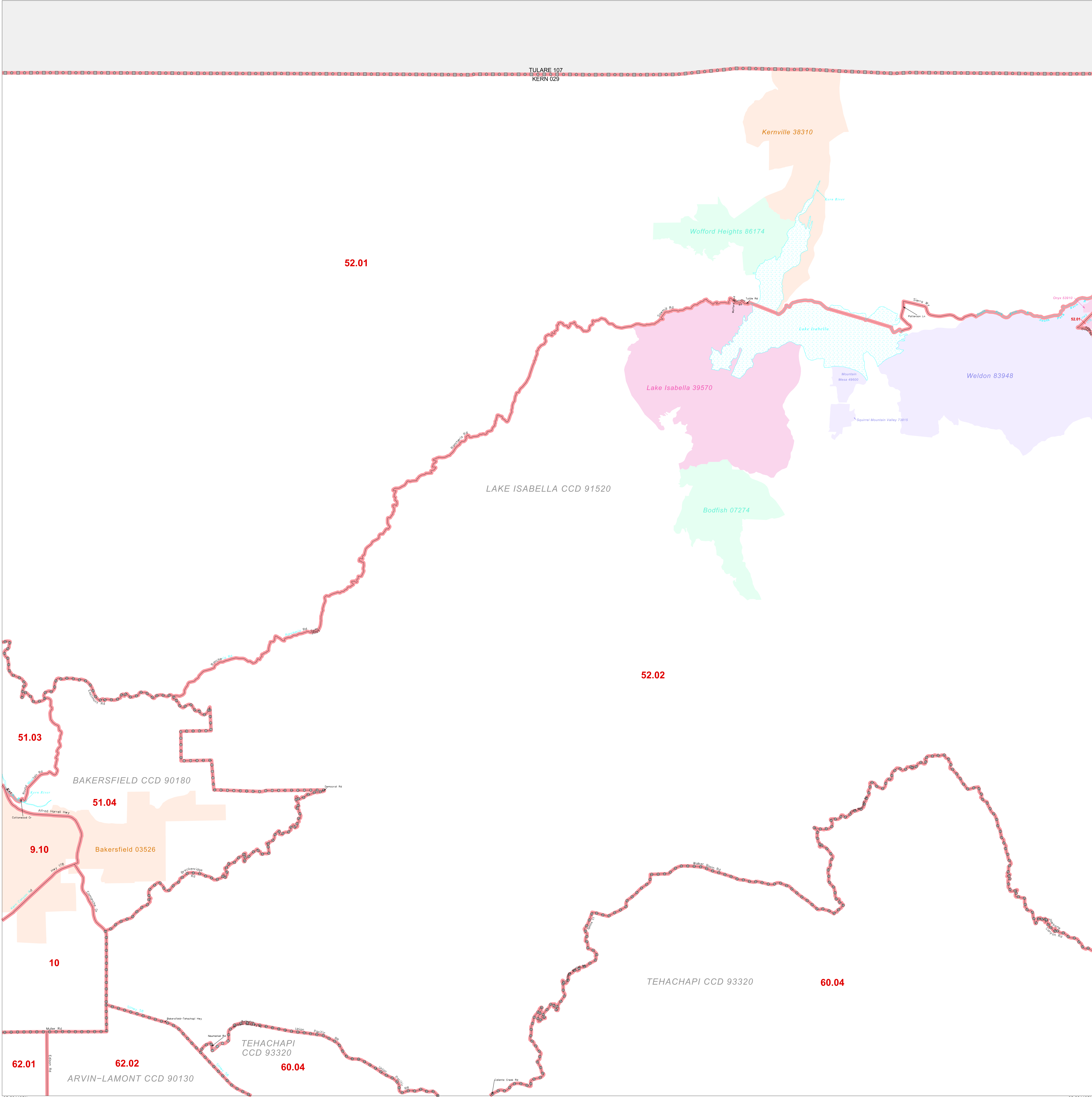


CENSUS TRACT OUTLINE MAP (CENSUS 2000)

35 825561N  
118 905172W

35 825561N  
118 237342W



**ABBREVIATED LEGEND**

SYMBOL	NAME STYLE
☆☆☆☆	INTERNATIONAL
☆☆☆☆	AIR (FEDERAL)
☆☆☆☆	Trust Land
◇◇◇◇	OTSA / TDSA
◇◇◇◇	TRIBAL SUBDIVISION
//////	AIR (State)
◇◇◇◇	SDA/SA
//////	STATE
■■■■	COUNTY
○○○○	CENSUS COUNTY DIV.
○○○○	Consolidated City
■■■■	Incorporated Place
■■■■	Census Designated Place
■■■■	Census Tract

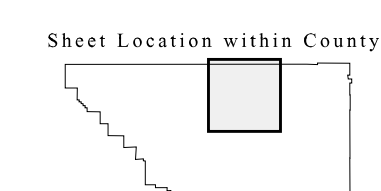
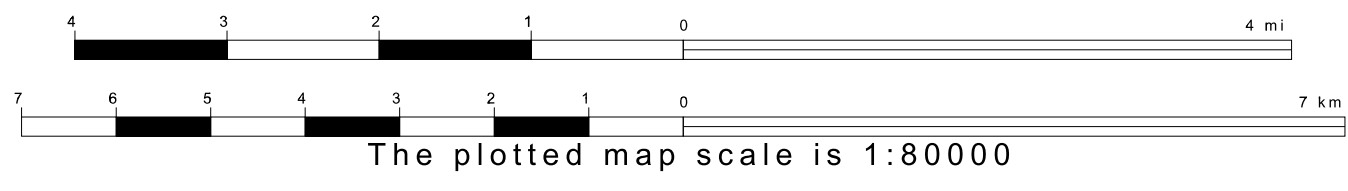
Abbreviation Reference: AIR = American Indian Reservation; Trust Land = Trust Land; OTSA = Oklahoma Tribal Statistical Area; TDSA = Tribal Designated Statistical Area; Tribal Subdivision = American Indian Tribal Subdivision; SDA/SA = State Designated American Indian Statistical Area

FEATURES	FEATURES
All Roads	Stream/Shoreline
Spur Road	Intermittent Stream
Play/Paver Line	River/Lake
Physical Feature	Glacier
Navigable Boundary	
Military	

Inset    Out Area

35 294405N  
118 905172W

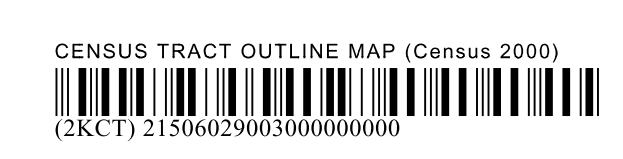
35 294405N  
118 237342W



Key to Adjacent Sheets

2	3	4
6	7	8

ST: California (06)  
COU: Kern (029)  
SHEET 3 OF 8 PARENT SHEETS



All legal boundaries and names are as of January 1, 2000. The boundaries shown on this map are for Census Bureau statistical data collection and tabulation purposes only; their depiction and designation for statistical purposes does not constitute a determination of jurisdictional authority or rights of ownership or entitlement. U.S. DEPARTMENT OF COMMERCE Economics and Statistics Administration U.S. Census Bureau