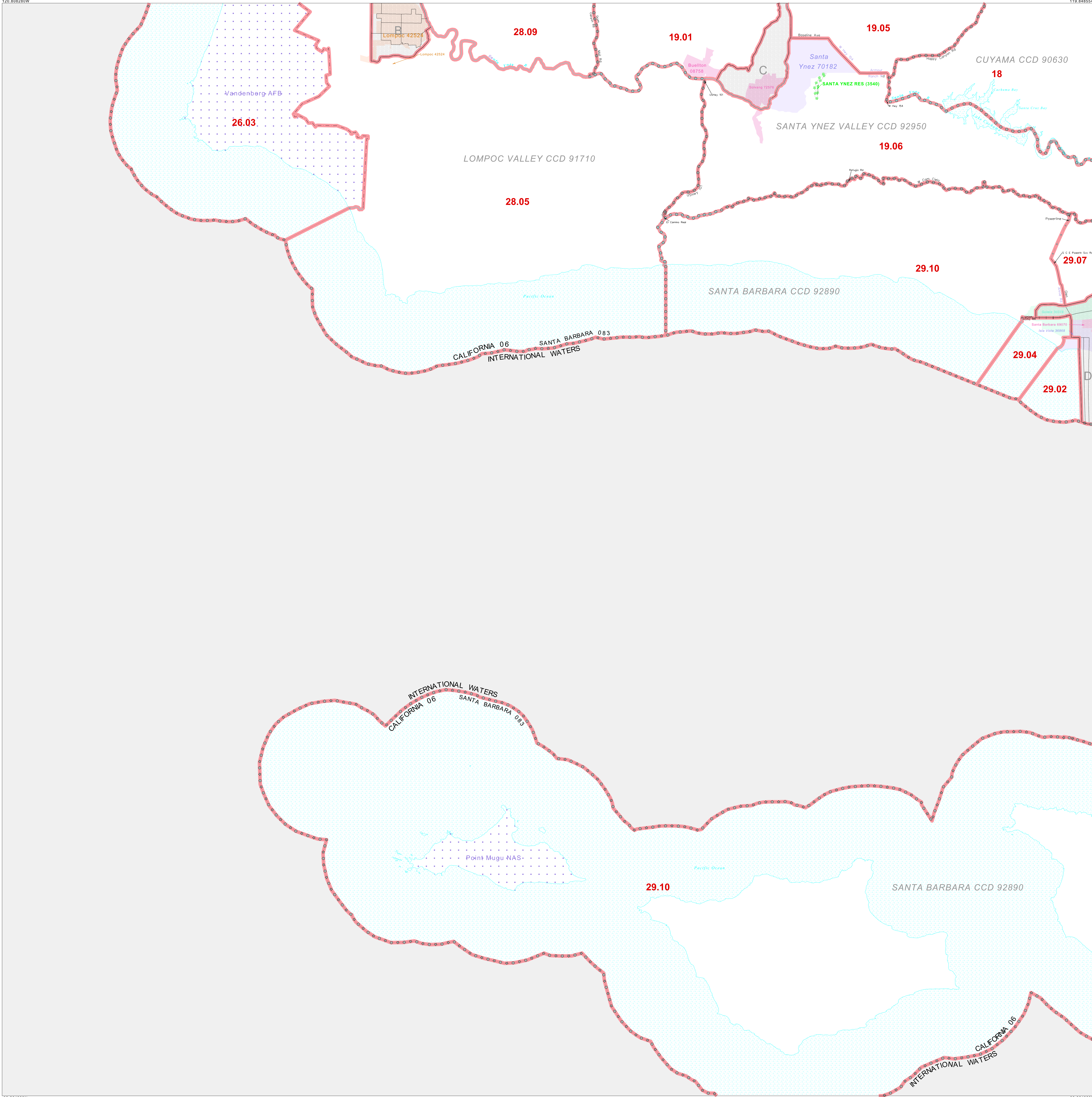


CENSUS TRACT OUTLINE MAP (CENSUS 2000)

34 861269N
120 898280W

34 861269N
119 848554W



ABBREVIATED LEGEND

SYMBOL	NAME STYLE
*****	INTERNATIONAL
*****	AIR (FEDERAL)
*****	Trust Land
*****	OTSA / TDSA
*****	TRIBAL SUBDIVISION
*****	AIR (State)
*****	SDA/SA
*****	STATE
*****	COUNTY
*****	CENSUS COUNTY DIV.
*****	Consolidated City
*****	Incorporated Place
*****	Census Designated Place
*****	Census Tract

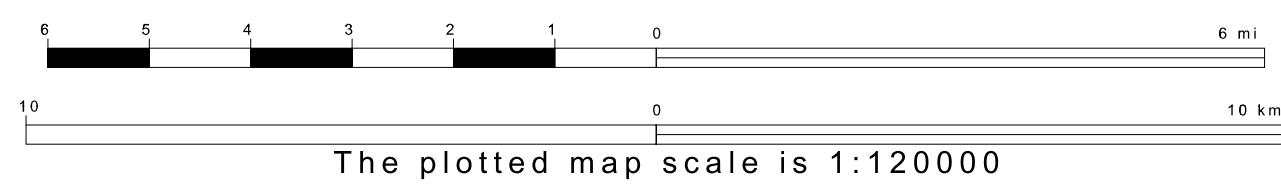
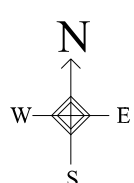
Abbreviation Reference: AIR = American Indian Reservation; Trust Land = OTF-Reservation Trust Land; OTSA = Oklahoma Tribal Statistical Area; TDSA = Tribal Designated Statistical Area; Tribal Subdivision = American Indian Tribal Subdivision; SDA/SA = State Designated American Indian Statistical Area

FEATURES	FEATURES
All Roads	Stream/Shoreline
Spur Road	Intermittent Stream
Play/Paver Line	River/Lake
Physical Feature	Glacier
Navigable Boundary	
Military	

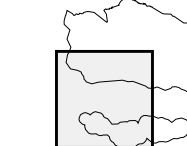
Inset Out Area

33 864399N
120 898280W

33 864399N
119 848554W



Sheet Location within County



Key to Adjacent Sheets

1	2
3	4
	5

ST: California (06)
COU: Santa Barbara (083)
SHEET 3 OF 5 PARENT SHEETS

