

CENSUS TRACT OUTLINE MAP (CENSUS 2000)

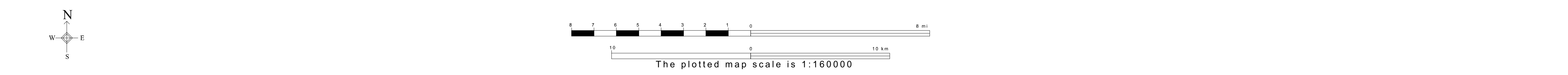
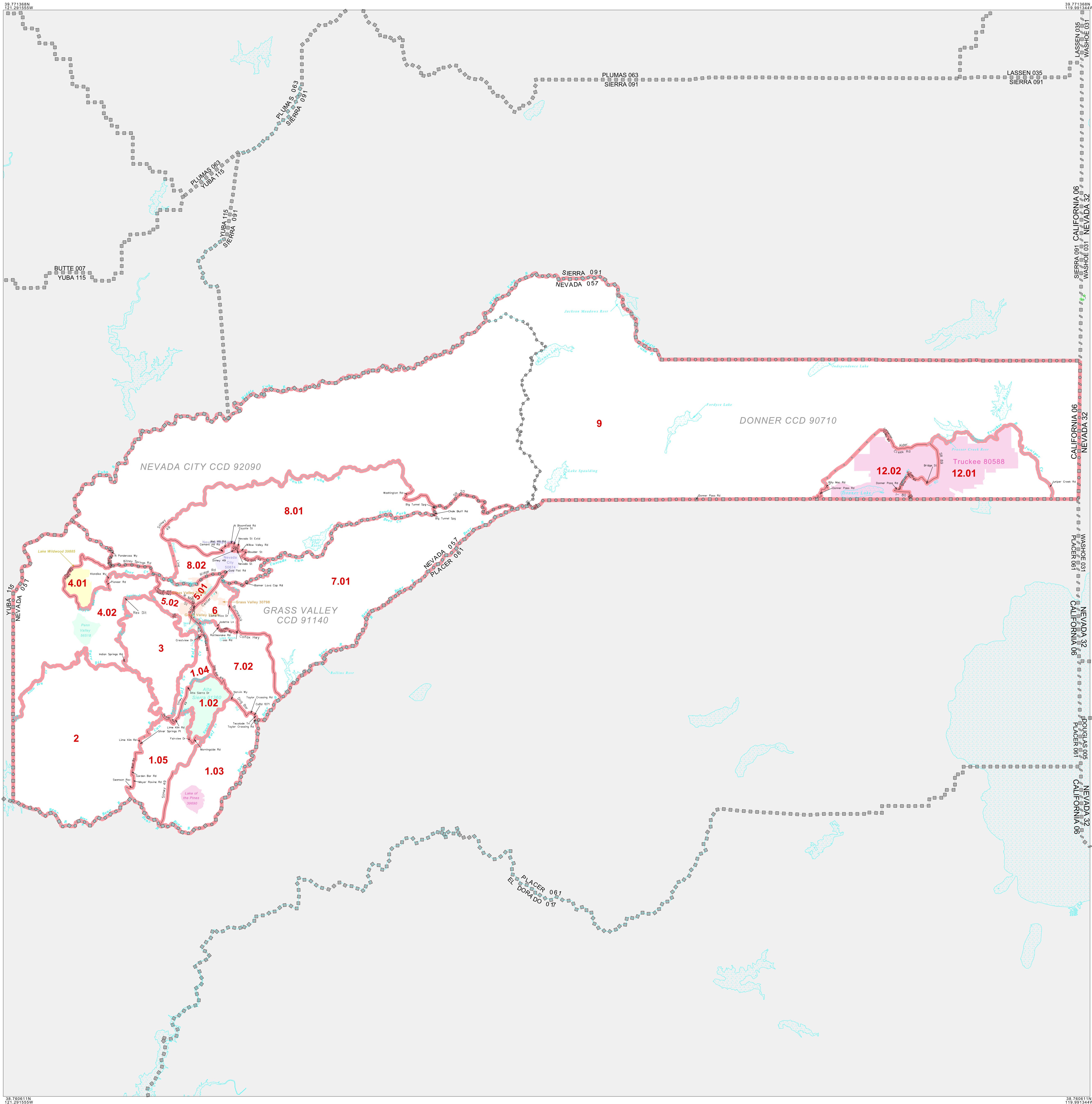
ABBREVIATED LEGEND

SYMBOL	NAME STYLE
*****	INTERNATIONAL
*****	AIR (FEDERAL)
*****	Trust Land
*****	OTSA / TDSA
*****	TRIBAL SUBDIVISION
*****	AIR (State)
*****	SDA/SA
-----	STATE
-----	COUNTY
-----	CENSUS COUNTY DIV.
-----	Consolidated City
-----	Incorporated Place
-----	Census Designated Place
-----	Census Tract

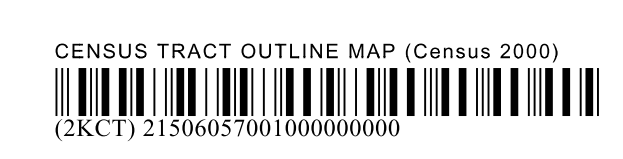
Abbreviation Reference: AIR = American Indian Reservation; Trust Land = OTF-Reservation Trust Land; OTSA = Oklahoma Tribal Statistical Area; TDSA = Tribal Designated Statistical Area; Tribal Subdivision = American Indian Tribal Subdivision; SDA/SA = State Designated American Indian Statistical Area

FEATURES	FEATURES
All Roads	Stream/Shareline
Spur Road	Intermittent Stream
Play/Power Line	River/Lake
Physical Feature	Glacier
Navigable Boundary	
Military	

Inset Out Area



ST: California (06)
 COU: Nevada (057)
 SHEET 1 OF 1 PARENT SHEET



All legal boundaries and names are as of January 1, 2000. The boundaries shown on this map are for Census Bureau statistical data collection and tabulation purposes only; their depiction and designation for statistical purposes does not constitute a determination of jurisdictional authority or rights of ownership or entitlement. U.S. DEPARTMENT OF COMMERCE Economics and Statistics Administration U.S. Census Bureau