

DATA & MAPS

An easy way to access emissions trading program data

Introduction

Data and Maps (D&M) is an internet application that allows users easy access to industry source emissions data, providing simple viewing and reporting capabilities as well as print and download options. The objective of D&M is to provide an easy to use, interactive, and intuitive Web-based interface to view unit, facility, emissions, and allowance data collected as part of EPA's emissions trading programs, as well as deposition data from the Clean Air Status and Trend Network (CASTNET). D&M provides users the tools to answer scientific, policy, and regulatory questions, and allows users to query data using a standard Web browser. No additional software, plug-ins, or security controls are required to access the data, thus supporting the objective that D&M be publicly available to all users.

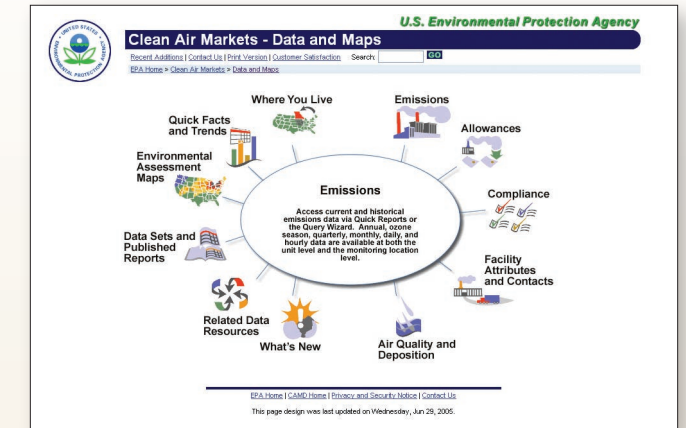
D&M is organized into six core functional areas: Emissions, Allowances, Facility Attributes and Contacts, Air Quality and Deposition, Quick Facts and Trends, and Where You Live. In addition, several external resources regarding compliance and environmental assessment mapping can be reached through links on the D&M home page.

The Emissions, Allowances, Facility Attributes and Contacts, and Air Quality and Deposition modules allow users to either create custom data reports using query wizards or to choose from a number of Quick Reports designed to provide easy access to frequently requested data. For users who are interested in acquiring raw hourly emissions data from a particular source for modeling or further analysis, prepackaged data sets are available for download in the Data Sets and Published Reports module.

Quick Facts and Trends provides streamlined information in the form of reports and graphs.

Where You Live provides detailed data for a selected facility by clicking on national and state-level maps.

Data and Maps Home



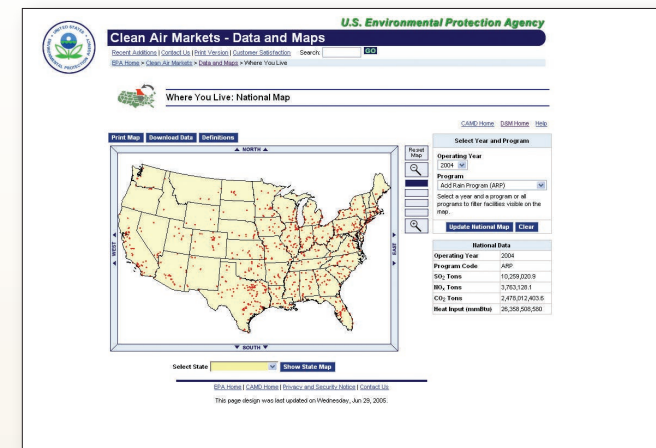
Emissions

The Emissions module accesses emissions data at either the unit level or monitoring location level for one or more facilities. The user can create a custom query using the Emissions Query Wizard, selecting to view data associated with specific programs, facilities, units, and time frames, as well as several other data characteristics. Also, commonly requested sets of data can be quickly accessed by using the Quick Report feature. Emissions are available for years 1980, 1985, 1990, and 1995 through the present.

Allowances

The Allowances module allows the user to view allowance data associated with EPA's emissions trading programs. Allowance data can be specified and organized using the Allowance Query Wizard to find allowances information associated with specific accounts, companies, transactions, programs, facilities, representatives, allowance type, or by date. Quick Reports and Prepackaged Datasets are also available for data that are commonly requested.

National Map



State Map

The State Map displays facilities on the map filtered by program and year, as well as state emissions totals for that program and year. The user may either click on a facility on the map, or select from a list of available facilities to go to the facility summary screen.

Facility Summary

The Facility Summary screen displays tabular annual emissions totals for each year a facility reported emissions. A graphical chart displays yearly emissions totals for a single user-selected pollutant. Summary data include facility IDs, county, owners, operators, representatives, and programs.

Unit Summary

The Unit Summary screen displays tabular annual emissions totals for each year a unit reported emissions. A graphical chart displays annual emissions totals for all units for a single user-selected pollutant.

State Map



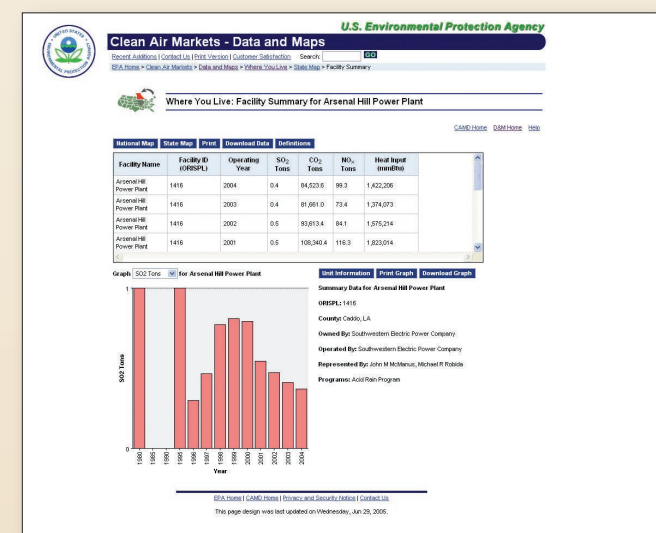
Where do the data in Data and Maps come from?

The data underlying the Data and Maps website come from two primary sources:

1. Data collected as part of EPA's emissions trading programs. These programs require industry sources to report hourly emissions data each quarter. Data may be collected for the entire year or, in some cases the ozone season (May - September)
2. The Clean Air Status and Trends Network, or CASTNET is the primary source for data on dry acidic deposition and rural, ground-level ozone. CASTNET consists of over 80 monitoring sites across the eastern and western United States and is cooperatively operated and funded with the National Park Service. www.epa.gov/CASTNET

Visit the site at: <http://cfpub.epa.gov/gdm>.
Contact Ketan D. Patel at 202-343-9144 or patel.ketan@epa.gov with any questions or suggestions.

Facility Summary



Facility Attributes and Contacts



The Facility Attributes and Contact module gives the user access to current and historical facility, owner, and representative data using custom queries, via the Facility Attributes Query Wizard, or Quick Reports. In addition, data regarding EPA, State, and local agency staff are also available. The Query Wizard can be used to search for data about a facility or facilities by identifying characteristics such as associated programs, owners, representatives, locations, and unit characteristics, facility inventories, and classifications.

Air Quality and Deposition



The Air Quality and Deposition module allows users to explore and download data from CASTNET. This includes weekly and hourly atmospheric concentrations, deposition data as well as ground-level ozone data collected at rural CASTNET sites across the U.S. The CASTNET Query Wizard allows users to construct custom queries using specific criteria of interest. Quick Reports and Prepackaged Data Sets are also available which allow easy access to summary reports and larger datasets. For more information on CASTNET, visit www.epa.gov/CASTNET.

Creating a Custom Query

1. Select criteria to use in the query. A criterion can be a characteristic such as a program, time frame, facility, owner, representative, or any combination thereof.
2. Select an aggregation level.
3. Customize the query's output by specifying the type of report and columns to be included.
4. View your results.

Data & Maps offers a variety of Prepackaged Data Sets so users can easily download the results of commonly requested queries.

Quick Reports

The Emissions, Allowances, Facility Attributes and Contacts, and Air Quality and Deposition sections of the D&M site provide users with access to Quick Reports, which allow the user to run basic reports requiring minimal criteria to access frequently requested data.

To access a Quick Report, the user first navigates to the Quick Report selection page, in Emissions, Allowances, Facility Attributes and Contacts, or Air Quality and Deposition. The user then selects a report by name. Upon selecting the report, the page displays the criteria available for constraining the report.

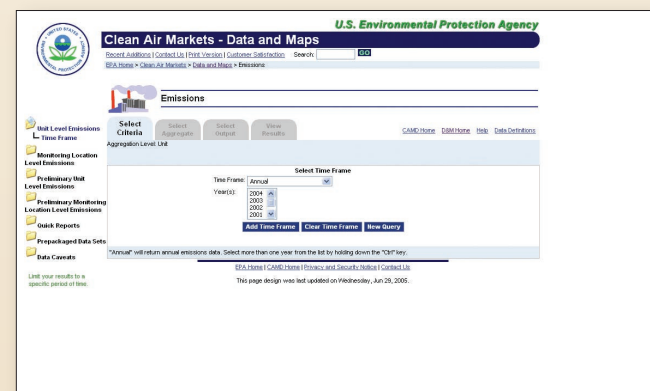
The Query Wizard

The Query Wizard is accessible from the Emissions, Allowances, Facility Attributes and Contacts, and Air Quality and Deposition sections of the D&M site. The Query Wizard allows the user to create complex, multi-criteria queries against both raw and aggregated data.

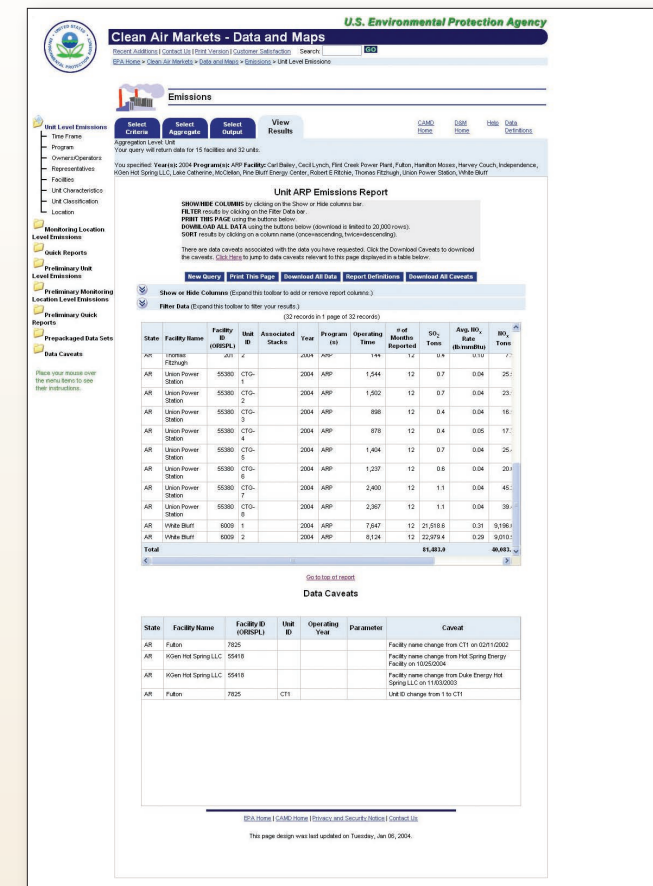
The Query Wizard guides a user through a series of steps, indicated by tabs at the top of the page. The first step is the selection of the query criteria. Within each wizard, there are one or more required criteria that must be selected before the user can select other optional criteria or view results. Once the required criteria have been selected, additional criteria options are presented to the user for selection. The user may select from any of these at any time.

The second step allows the user to select the aggregation level of the data, if desired. This step only applies to the Emissions section of the site. Emissions data is by default

Query Wizard: Select Criteria



Query Wizard: View Results

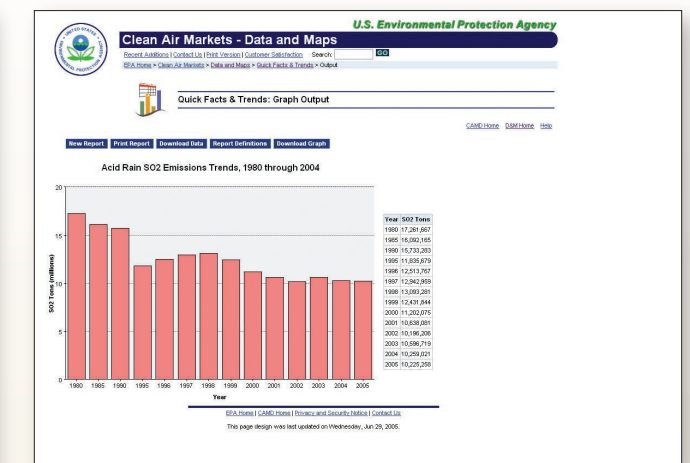


presented at the unit level. On the Select Aggregate tab, the user has the option to aggregate data based on its source (i.e., by individual unit, facility, state, region, or nationally). This step is optional.

The third step allows the user to customize the output of the custom query. In this step, the user specifies the report (if more than one is available) and chooses the columns they wish to see in their query results. This step is optional.

The final step allows the user to view the results of the custom query in tabular format. The user can then print the report, download the report, download data caveats (which are shown below the report if any exist), view report definitions, or return to the report selection screen. Additionally, the user has the flexibility to sort the report by any column of data and filter the results based on data in one of the available columns.

Quick Facts & Trends Graph



Quick Facts and Trends



The Quick Facts and Trends module provides charts and graphs depicting national trends in emissions and heat input. The user can view, for example, data pertaining to the top annual and ozone season emitters of a selected pollutant, the number of units and facilities in a particular state, and trends in sulfur dioxide, nitrogen oxide and carbon dioxide emissions.



Where You Live

Where You Live accesses facility and unit attribute data as well as emissions data using a series of interactive national and state maps. This module allows the user to view data for regions of interest throughout the country using an intuitive interface, while also providing a national and statewide context for data specific to one or more facilities.

The following charts and maps comprise the essential elements of Where You Live:

National Map

The National Map displays facilities filtered by program and year, as well as national emissions totals for that program and year. The user may either click on the map or select a state from a list in order to zoom to the state level screen.