
Corrections

Federal Register

Vol. 70, No. 90

Wednesday, May 11, 2005

This section of the FEDERAL REGISTER contains editorial corrections of previously published Presidential, Rule, Proposed Rule, and Notice documents. These corrections are prepared by the Office of the Federal Register. Agency prepared corrections are issued as signed documents and appear in the appropriate document categories elsewhere in the issue.

Wednesday, April 27, 2005 make the following correction:

On pages 21834-21835, the chart is corrected to read as set forth below:

SOCIAL SECURITY ADMINISTRATION

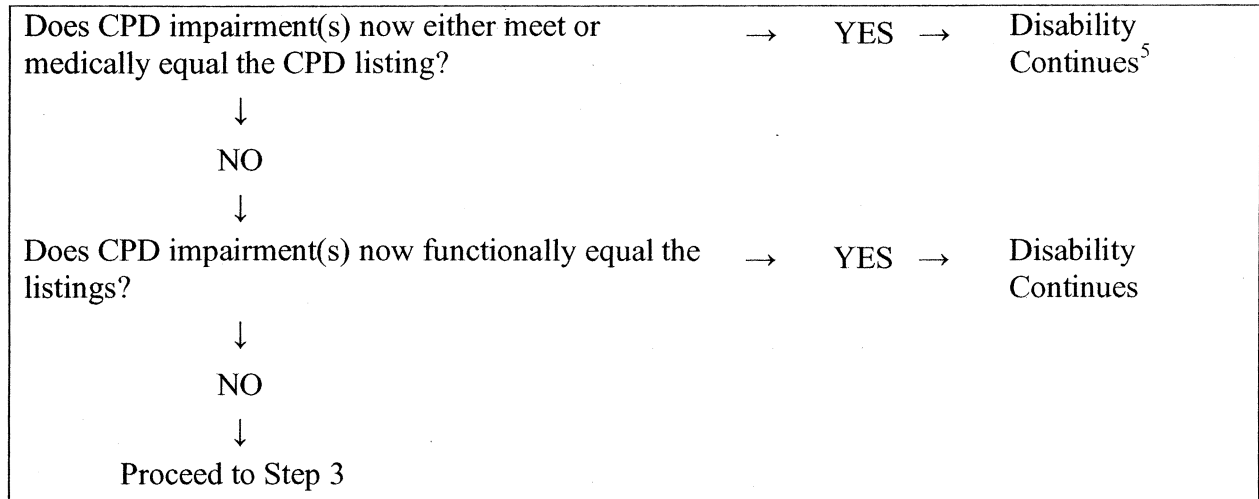
Social Security Ruling, SSR 05-03p.; Title XVI: Determining Continuing Disability at Step 2 of the Medical Improvement Review Standard Sequential Evaluation Process for Children Under Age 18—Functional Equivalence

Correction

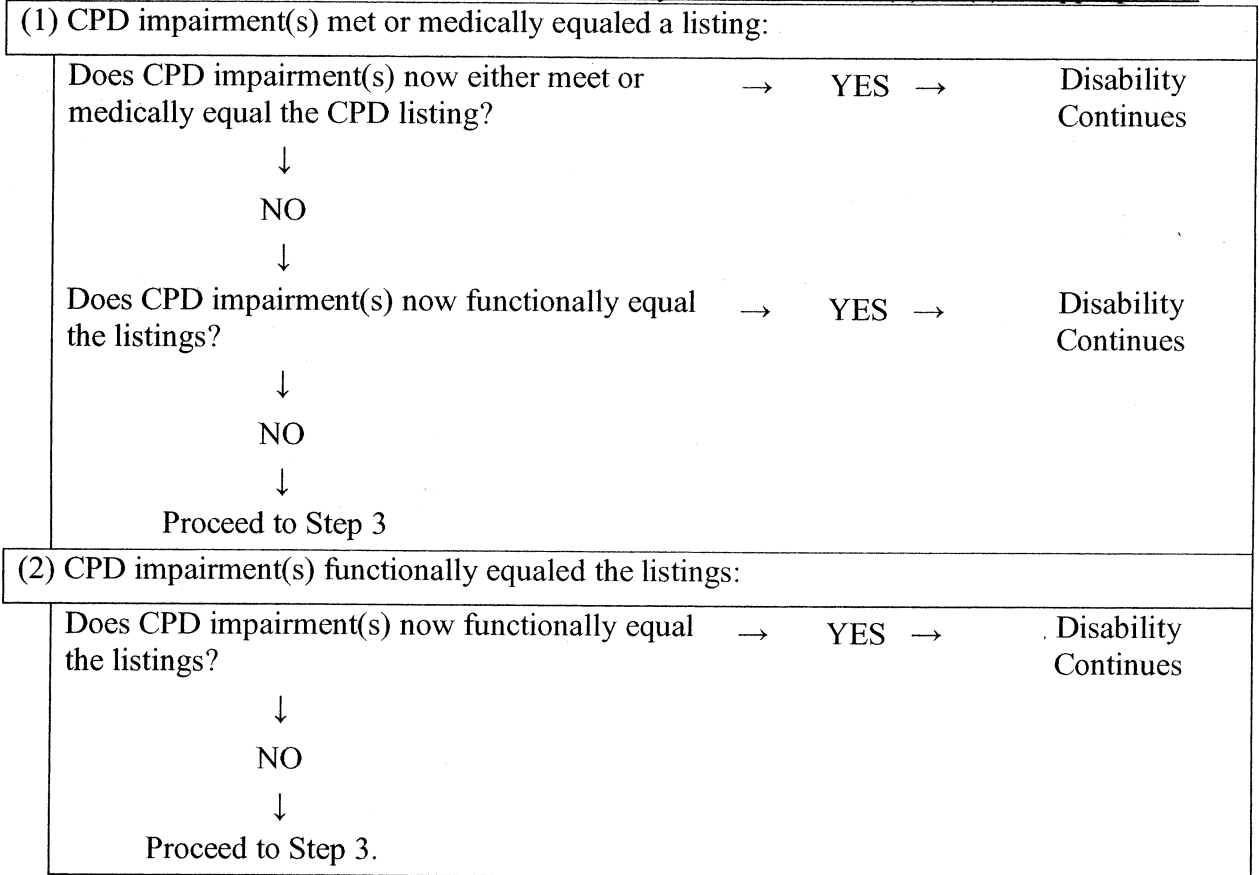
In notice document 05-8390 beginning on page 21833 in the issue of

Chart: This chart summarizes the explanations above. Follow a. or b. as appropriate.

a. If the CPD was made before January 2, 2001:



b. If the CPD was made on or after January 2, 2001, follow (1) or (2) as appropriate:



⁵ The conclusion that disability continues here and elsewhere on this chart is subject to any applicable exceptions to the MIRS standard. See footnote 1 above.