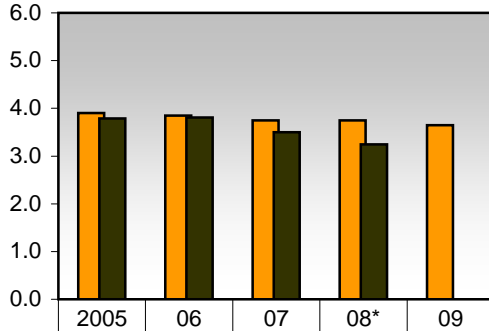


FRA Safety Performance Measures - All Railroads

Fiscal-Year Basis

Grade Crossing Incidents

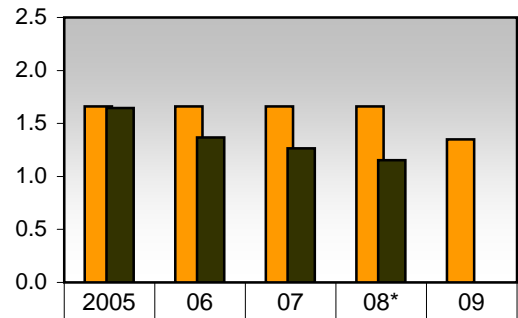
Per Million Train-Miles



GPRA Goal	3.90	3.85	3.75	3.75	3.65
Actual	3.79	3.81	3.50	3.24	

Human-Factors Train Accidents

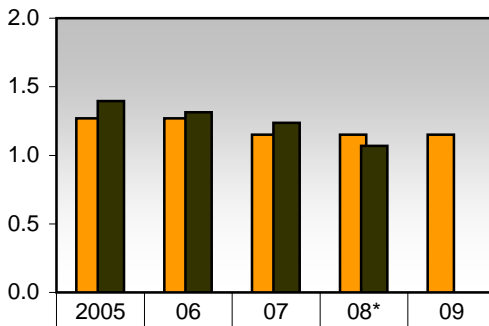
Per Million Train-Miles



GPRA Goal	1.66	1.66	1.66	1.66	1.35
Actual	1.65	1.37	1.26	1.15	

Track-Caused Train Accidents

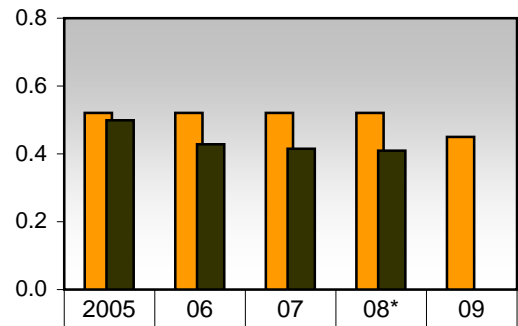
Per Million Train-Miles



GPRA Goal	1.27	1.27	1.15	1.15	1.15
Actual	1.39	1.31	1.24	1.07	

Equip-Caused Train Accidents

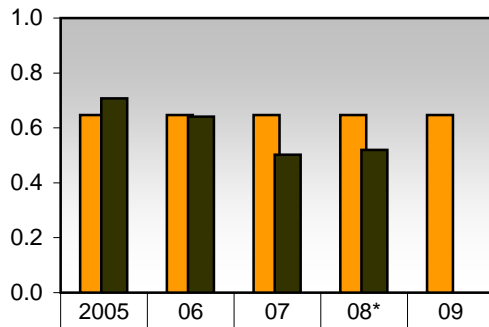
Per Million Train-Miles



GPRA Goal	0.521	0.521	0.521	0.521	0.450
Actual	0.499	0.429	0.415	0.409	

Signal/Misc. Train Accidents

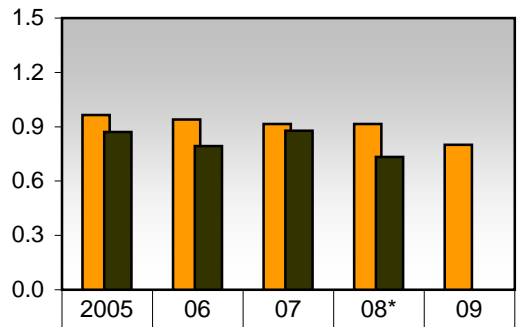
Per Million Train-Miles



GPRA Goal	0.647	0.647	0.647	0.647	0.647
Actual	0.707	0.641	0.502	0.520	

Non-Accident Hazmat Releases

Per Million Train-Miles



GPRA Goal	0.965	0.940	0.915	0.915	0.800
Actual	0.870	0.794	0.878	0.734	

* FY 2008 = 10 months of preliminary data.