

Water-Data Report 2007

02098198 HAW RIVER BELOW B. EVERETT JORDAN LAKE DAM NEAR MONCURE, NC

Cape Fear Basin
Haw Subbasin

LOCATION.--Lat 35°38'58", long 79°03'56" referenced to North American Datum of 1983, Chatham County, NC, Hydrologic Unit 03030002, on right bank 1,000 ft downstream from B. Everett Jordan Lake Dam, 2.5 mi north of Moncure, and 4.2 mi upstream from mouth.

DRAINAGE AREA.--1,689 mi².

SURFACE-WATER RECORDS

PERIOD OF RECORD.--October 1965 to current year. Discharge records October 1965 to September 1992. Gage height records only, October 1992 to current year. October 1965 to September 1978, published as "Haw River near Haywood, NC" (02098200).

REVISED RECORDS.--WDR NC-81-1: Drainage area.

GAGE.--Water-stage recorder. Datum of gage is 155.00 ft above NGVD of 1929 (U.S. Corps of Engineers bench mark). Prior to October 1, 1978, water-stage recorder at site 0.3 mi. downstream of dam at same datum. Period October 1, 1978 to June 28, 2007, water-stage recorder at site 300 ft downstream from dam at same datum. U.S. Army Corps of Engineers satellite telemetry at station.

REMARKS.--Stage regulated by B. Everett Jordan Lake Dam (Station 02098197).

EXTREMES FOR PERIOD OF RECORD.--Maximum gage height, 22.41 ft, October 25, 1971 at site 0.3 mi downstream; minimum gage height not determined.

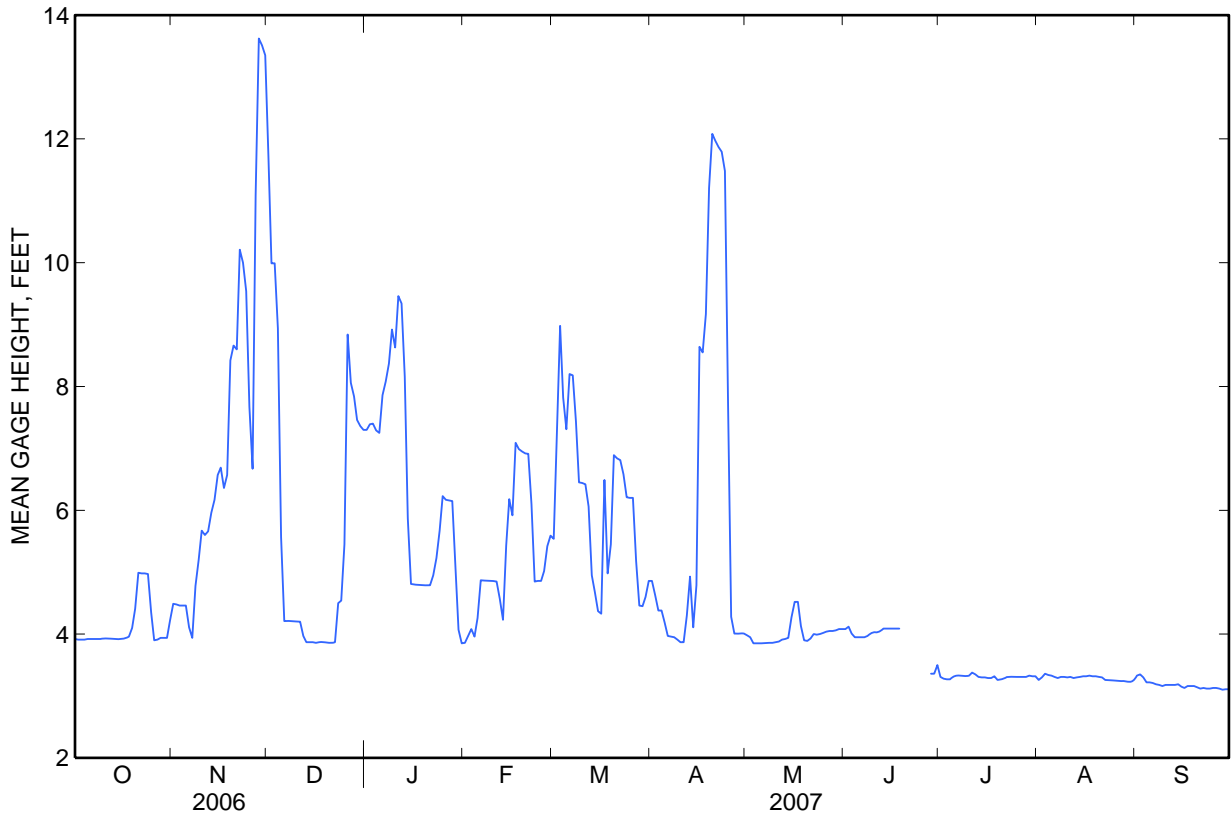
EXTREMES FOR CURRENT YEAR.--Maximum gage height, 13.80 ft, November 27; minimum gage height, 3.05 ft, September 28.

02098198 HAW RIVER BELOW B. EVERETT JORDAN LAKE DAM NEAR MONCURE, NC—Continued

GAGE HEIGHT, FEET
WATER YEAR OCTOBER 2006 TO SEPTEMBER 2007
DAILY MEAN VALUES

Day	Oct	Nov	Dec	Jan	Feb	Mar	Apr	May	Jun	Jul	Aug	Sep
1	3.92	4.49	11.71	7.30	3.86	5.54	4.86	3.98	4.08	3.31	3.26	3.33
2	3.91	4.48	9.99	7.39	3.97	7.26	4.63	3.95	4.12	3.28	3.30	3.35
3	3.91	4.46	9.99	7.40	4.08	8.98	4.38	3.85	4.01	3.27	3.36	3.30
4	3.91	4.46	8.94	7.29	3.96	7.82	4.38	3.85	3.95	3.27	3.34	3.22
5	3.92	4.46	5.57	7.25	4.26	7.31	4.19	3.85	3.95	3.31	3.33	3.22
6	3.92	4.11	4.21	7.86	4.87	8.20	3.97	3.85	3.95	3.33	3.31	3.21
7	3.92	3.94	4.21	8.08	4.87	8.18	3.96	3.86	3.95	3.33	3.29	3.19
8	3.92	4.78	4.21	8.37	4.86	7.43	3.95	3.86	3.97	3.33	3.31	3.18
9	3.92	5.20	4.21	8.92	4.86	6.45	3.91	3.86	4.01	3.32	3.31	3.16
10	3.93	5.67	4.20	8.63	4.86	6.44	3.87	3.87	4.03	3.33	3.30	3.18
11	3.93	5.60	4.20	9.46	4.85	6.42	3.87	3.88	4.03	3.38	3.31	3.18
12	3.93	5.66	3.97	9.34	4.57	6.06	4.30	3.91	4.05	3.35	3.29	3.18
13	3.92	5.96	3.87	8.16	4.23	4.95	4.93	3.92	4.09	3.31	3.30	3.18
14	3.92	6.17	3.87	5.87	5.43	4.68	4.11	3.94	4.09	3.30	3.31	3.19
15	3.92	6.57	3.87	4.81	6.18	4.37	4.79	4.27	4.09	3.30	3.32	3.15
16	3.92	6.69	3.86	4.80	5.92	4.33	8.64	4.52	4.09	3.29	3.32	3.13
17	3.94	6.36	3.87	4.80	7.09	6.49	8.55	4.52	4.09	3.29	3.33	3.16
18	3.96	6.57	3.87	4.79	6.99	4.98	9.17	4.13	4.09	3.32	3.32	3.16
19	4.10	8.42	3.87	4.79	6.95	5.45	11.21	3.90	---	3.26	3.32	3.16
20	4.41	8.66	3.86	4.79	6.92	6.89	12.08	3.89	---	3.27	3.31	3.14
21	4.99	8.60	3.86	4.79	6.91	6.84	11.97	3.93	---	3.28	3.30	3.12
22	4.98	10.21	3.87	4.95	6.10	6.81	11.87	4.00	---	3.31	3.26	3.13
23	4.98	10.00	4.50	5.23	4.85	6.58	11.79	3.99	---	3.31	3.26	3.12
24	4.97	9.54	4.54	5.67	4.86	6.21	11.48	4.00	---	3.31	3.25	3.12
25	4.35	7.67	5.45	6.23	4.86	6.20	7.65	4.02	---	3.31	3.25	3.13
26	3.90	6.67	8.84	6.17	5.02	6.20	4.28	4.04	---	3.31	3.25	3.13
27	3.91	11.09	8.06	6.16	5.42	5.18	4.01	4.05	---	3.31	3.24	3.12
28	3.94	13.62	7.84	6.15	5.59	4.46	4.01	4.05	3.36	3.31	3.24	3.10
29	3.94	13.51	7.46	5.07	---	4.45	4.01	4.06	3.36	3.33	3.23	3.11
30	3.94	13.35	7.36	4.07	---	4.60	4.01	4.08	3.50	3.32	3.23	3.11
31	4.22	---	7.30	3.85	---	4.86	---	4.08	---	3.32	3.26	---
Mean	4.10	7.23	5.66	6.40	5.26	6.15	6.29	4.00	---	3.31	3.29	3.17
Max	4.99	13.62	11.71	9.46	7.09	8.98	12.08	4.52	---	3.38	3.36	3.35
Min	3.90	3.94	3.86	3.85	3.86	4.33	3.87	3.85	---	3.26	3.23	3.10

02098198 HAW RIVER BELOW B. EVERETT JORDAN LAKE DAM NEAR MONCURE, NC—Continued



02098198 HAW RIVER BELOW B. EVERETT JORDAN LAKE DAM NEAR MONCURE, NC—Continued**CLIMATOLOGICAL RECORDS**

PERIOD OF RECORD.--October 1998 to July 2007. Gage relocated to "B. Everett Jordan Lake at Dam near Moncure" (station 02098197), July 2007.

INSTRUMENTATION.--Tipping-bucket raingage. Satellite telemetry at station.

REMARKS.--Precipitation data collected during freezing periods may not be accurately reflected in daily record; consequently, winter record is poor.

PRECIPITATION, TOTAL, INCHES
WATER YEAR OCTOBER 2006 TO SEPTEMBER 2007
DAILY SUM VALUES

Day	Oct	Nov	Dec	Jan	Feb	Mar	Apr	May	Jun	Jul	Aug	Sep
1	0.00	0.00	0.11	0.30	0.48	0.28	0.01	0.00	---	0.00	---	---
2	0.00	0.00	0.00	0.00	0.00	0.49	0.04	0.00	---	0.00	---	---
3	0.00	0.00	0.20	0.00	0.00	0.00	0.19	---	---	0.00	---	---
4	0.00	0.00	0.00	0.00	0.00	0.00	0.01	---	---	0.00	---	---
5	0.00	0.00	0.00	0.23	0.00	0.00	0.00	---	---	0.00	---	---
6	0.60	0.00	0.00	0.20	0.00	0.00	0.00	---	0.00	---	---	---
7	0.37	2.07	0.00	0.31	0.00	0.00	0.09	---	0.00	---	---	---
8	0.08	0.07	0.00	0.35	0.00	0.00	0.00	---	0.00	---	---	---
9	0.06	0.00	0.00	0.00	0.00	0.00	0.00	---	0.01	---	---	---
10	0.00	0.00	0.00	0.00	0.00	0.00	0.00	---	0.01	---	---	---
11	0.00	0.00	0.00	0.00	0.00	0.00	0.69	---	0.04	---	---	---
12	0.07	0.95	0.00	0.00	0.00	0.00	0.19	---	0.01	---	---	---
13	0.00	0.00	0.00	0.00	0.91	0.00	0.00	---	0.12	---	---	---
14	0.00	0.00	0.00	0.00	0.04	0.00	0.00	0.00	0.00	---	---	---
15	0.00	0.00	0.00	0.00	0.00	0.00	1.62	---	0.00	---	---	---
16	0.00	1.45	0.00	0.00	0.00	1.58	0.01	---	0.00	---	---	---
17	1.50	0.00	0.00	0.00	0.00	0.00	0.00	---	0.00	---	---	---
18	0.08	0.00	0.00	0.25	0.00	0.00	0.00	---	0.00	---	---	---
19	0.01	0.00	0.00	0.00	0.00	0.00	0.00	0.00	0.01	---	---	---
20	0.11	0.00	0.00	0.00	0.00	0.00	0.00	0.00	0.04	---	---	---
21	0.00	0.87	0.00	0.55	0.00	0.00	0.00	0.00	0.00	---	---	---
22	0.07	1.83	0.97	0.08	0.00	0.00	0.00	0.00	0.00	---	---	---
23	0.00	0.00	0.01	0.00	0.00	0.00	0.00	0.00	0.02	---	---	---
24	0.00	0.00	0.00	0.00	0.00	0.00	0.00	0.00	0.16	---	---	---
25	0.00	0.00	0.77	0.00	0.63	0.00	0.00	0.00	0.02	---	---	---
26	0.00	0.00	0.29	0.00	0.00	0.00	0.00	0.00	0.00	---	---	---
27	0.63	0.00	0.09	0.00	0.00	0.00	0.35	0.00	0.32	---	---	---
28	0.24	0.00	0.46	0.00	0.00	0.00	0.00	0.00	0.06	---	---	---
29	0.00	0.00	0.01	0.00	---	0.45	0.00	0.00	1.65	---	---	---
30	0.00	0.06	0.00	0.00	---	0.00	0.00	0.00	0.01	---	---	---
31	0.00	---	0.00	0.00	---	0.00	---	0.00	---	---	---	---
Total	3.82	7.30	2.91	2.27	2.06	2.80	3.20	---	---	---	---	---

02098198 HAW RIVER BELOW B. EVERETT JORDAN LAKE DAM NEAR MONCURE, NC—Continued

