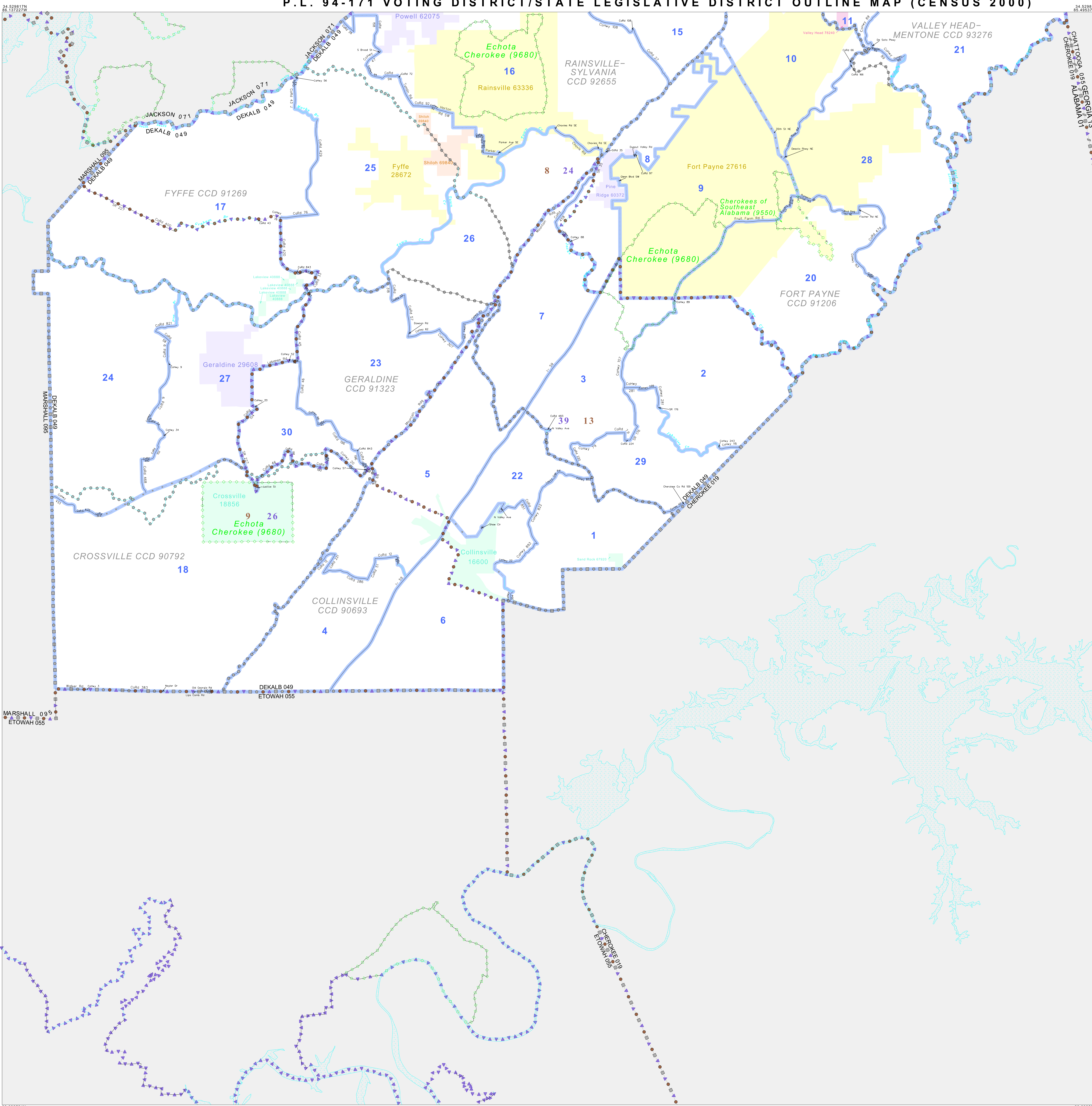


P.L. 94-171 VOTING DISTRICT/STATE LEGISLATIVE DISTRICT OUTLINE MAP (CENSUS 2000)



GEOGRAPHIC AREAS LEGEND

SYMBOL	NAME STYLE
*****	INTERNATIONAL
*****	AIR (FEDERAL)
*****	Trust Land
*****	AIR (State)
*****	SDA/SA
*****	STATE
*****	COUNTY
*****	CENSUS COUNTY DIV.
*****	Incorporated Place
*****	Census Designated Place
*****	Voting District
*****	SLD-Senate
*****	SLD-House
*****	Military
*****	Inset
*****	Out Area

Abbreviation Reference: AIR = American Indian Reservation; SDA/SA = State Designated American Indian Statistical Area; Trust Land = Off-Reservation Trust Land

1 A * * following a VTD code indicates an actual voting district. Its absence indicates that the VTD is a pseudo voting district or no information is available as to its status.

Voting Districts

Code	Name
1	Mt. Vernon-Drake Voting District
2	Dog Town Voting District
3	Children Voting District
4	Kesner Voting District
5	Capshaw's Bridge Voting District
6	Collinsville Voting District
7	Lakewood Voting District
8	Pine Ridge Voting District
9	Fort Payne Voting District
10	White Oak Voting District
11	Valley Head Voting District
12	High Point Voting District
13	Rainsville Comm. Center Voting District
14	Chigger Hill Voting District
15	Kilpatrick Voting District
16	East Highland Voting District
17	Madison Voting District
18	Powell Voting District
19	Patton Voting District
20	Harmony Voting District
21	Fyffe Voting District
22	Pleasant Hill Voting District
23	Geraldine Voting District
24	Fisher Voting District
25	Lowless Voting District
26	Skorum Voting District
27	
28	
29	
30	

Sheet Location within County

Key to Adjacent Sheets

1	2
3	4

ST: Alabama (01)
 COU: DeKalb (049)
 SHEET 2 OF 2 PARENT SHEETS

The plotted map scale is 1:80000

33 988594N
 86 137227W

33 988594N
 86 137227W

All legal boundaries and names are as of January 1, 2000. The boundaries shown on this map are for Census Bureau statistical data collection and tabulation purposes only; their depiction and designation for statistical purposes does not constitute a determination of jurisdictional authority or rights of ownership or entitlement. U.S. DEPARTMENT OF COMMERCE Economics and Statistics Administration U.S. Census Bureau