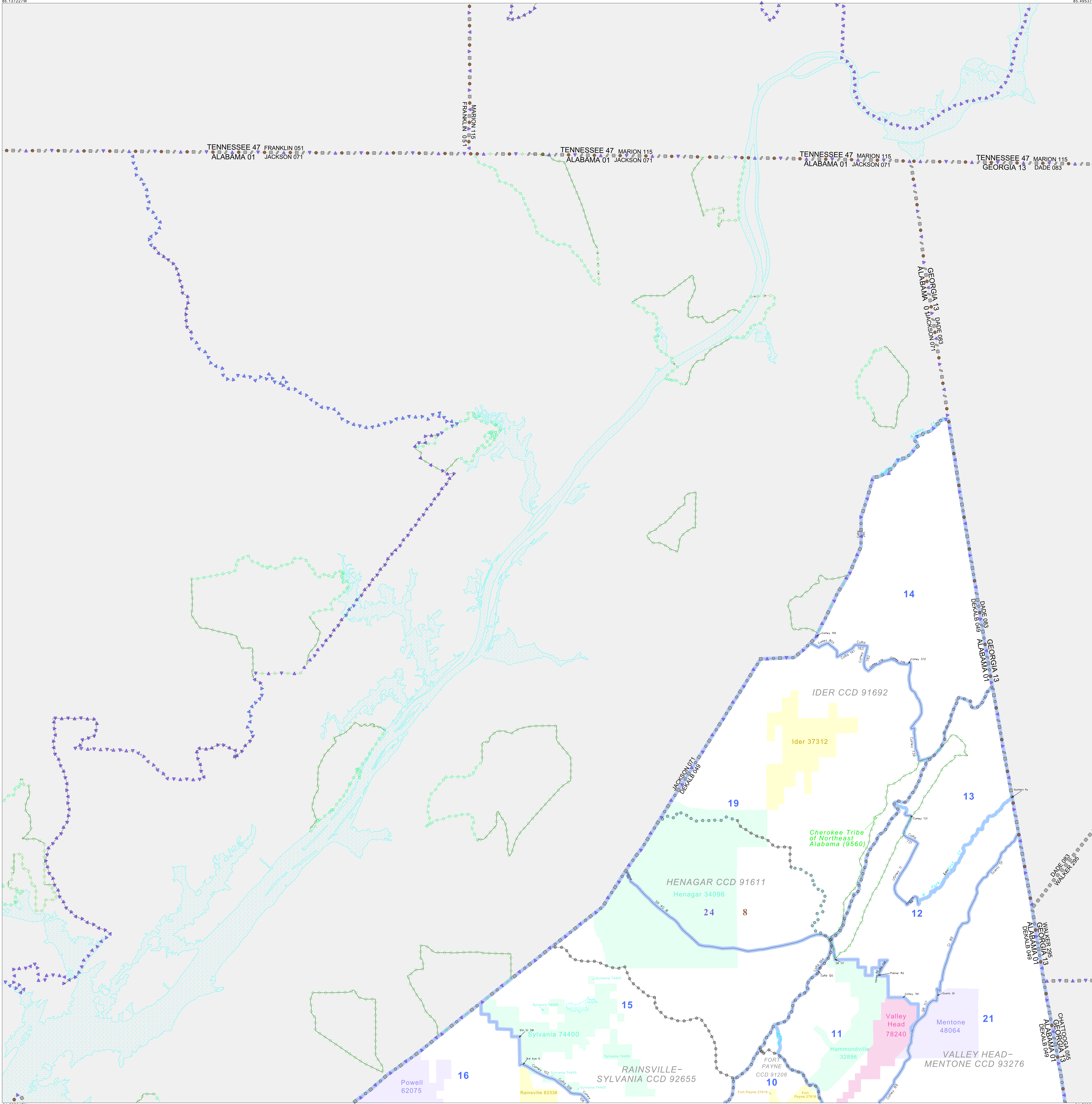


P.L. 94-171 VOTING DISTRICT/STATE LEGISLATIVE DISTRICT OUTLINE MAP (CENSUS 2000)

35 061040N
86.137227W

35 061040N
85.495375W



GEOGRAPHIC AREAS LEGEND

| SYMBOL | NAME STYLE |
|--------|-------------------------|
| ***** | INTERNATIONAL |
| ***** | AIR (FEDERAL) |
| ***** | Trust Land |
| ***** | AIR (State) |
| ***** | SDA/ISA |
| ***** | STATE |
| ***** | COUNTY |
| ***** | CENSUS COUNTY DIV. |
| ***** | Incorporated Place |
| ***** | Census Designated Place |
| ***** | Voting District |
| ***** | SLD-Senate |
| ***** | SLD-House |
| ***** | Military |

Abbreviation Reference: AIR = American Indian Reservation; SDA/ISA = State Designated American Indian Statistical Area; Trust Land = Off-Reservation Trust Land

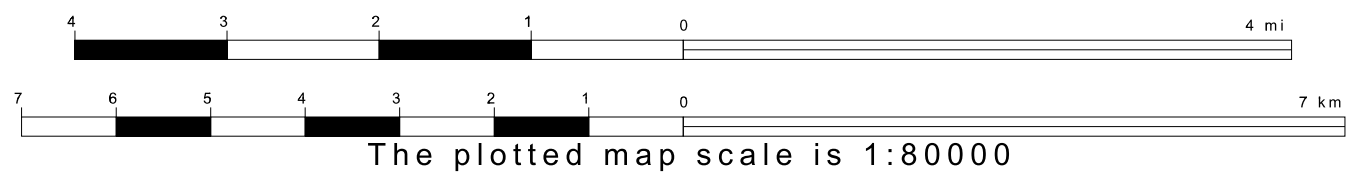
1 A * * following a VTD code indicates an actual voting district. Its absence indicates that the VTD is a pseudo voting district or no information is available as to its status.

Voting Districts

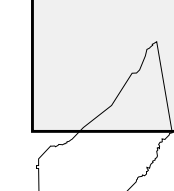
| Code | Name |
|------|---------------------------------------|
| 10 | White Hall Voting District |
| 11 | Valley Head Voting District |
| 12 | Lee's Chapel Voting District |
| 13 | Sulphur Springs Voting District |
| 14 | Shiloh Voting District |
| 15 | High Point Voting District |
| 16 | Historic Green Center Voting District |
| 18 | Ider-Poa Bridge Voting District |
| 21 | Western Voting District |

34 529817N
86.137227W

34 529817N
85.495375W



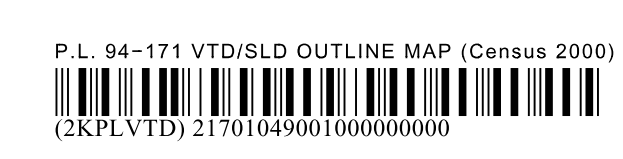
Sheet Location within County



Key to Adjacent Sheets

| |
|---|
| 1 |
| 2 |

ST: Alabama (01)
COU: DeKalb (049)
SHEET 1 OF 2 PARENT SHEETS



All legal boundaries and names are as of January 1, 2000. The boundaries shown on this map are for Census Bureau statistical data collection and tabulation purposes only; their depiction and designation for statistical purposes does not constitute a determination of jurisdictional authority or rights of ownership or entitlement. U.S. DEPARTMENT OF COMMERCE Economics and Statistics Administration U.S. Census Bureau