

EFLHD configuration setup for A&E Consultants

Last Updated: October 9, 2008

Prepared by Shoukat Nawaz – Shoukat.nawaz@fhwa.dot.gov

(703) 404 6280

STEP I:- Download “**CADD_Resource_V8.zip**” file from EFLHD website and extract it. Copy the folder **CADD_Resource_V8** and all its contents and subfolders to a location that you select on a server drive. The server drive will need to be accessible to all the workstations running MicroStation V8.

CADD_Resource_V8.zip includes directories

- x30
- Project Configuration
- Borders
- Cross-Section_Shts
- Plan&Profile_Shts
- Quantity_Shts
- Standard_Shts
- Plotting

x30 - Directory includes the MicroStation and Geopak files that are needed to run Geopak 2004 Edition Typical Section Generator according to EFLHD's standards.

Project Configuration - Directory includes Project Configuration files that should be used to setup the x30 Generation of standard files.

Borders - Directory includes the EFLHD borders in English and Metric, which will be used as reference to all EFLHD sheets except Plan & Profile sheets, Cross Section Sheets and Title sheets.

Cross-Section_Shts - directory includes the instruction and XSSL file to generate Cross Section Sheets.

Plan&Profile_Shts - Directory includes the instruction and EFLHD's standard PSL file to generate P&P sheets.

Quantity_Shts - Directory includes the instruction; quantity sheet dgn file and EXCEL file to generate the quantity sheets.

Sample_Shts - Directory includes the EFLHD's sample dgn file for title sheets for different agencies, Symbol & Abreviation sheets, and Subgrade Template sheet.

CADD_Resource_V8 folder also includes the following files: eflhd.cfg, EFLHD_mslocal.cfg for configuration, EFLHD Microstation Icon, and Configuration Instructions for A&E Consultants.pdf.

STEP II:- Modify “**EFLHD.cfg**” configuration file from **CADD_resource_v8** folder as shown.

Open EFLHD.cfg configuration file by a text editor. It will look like this:

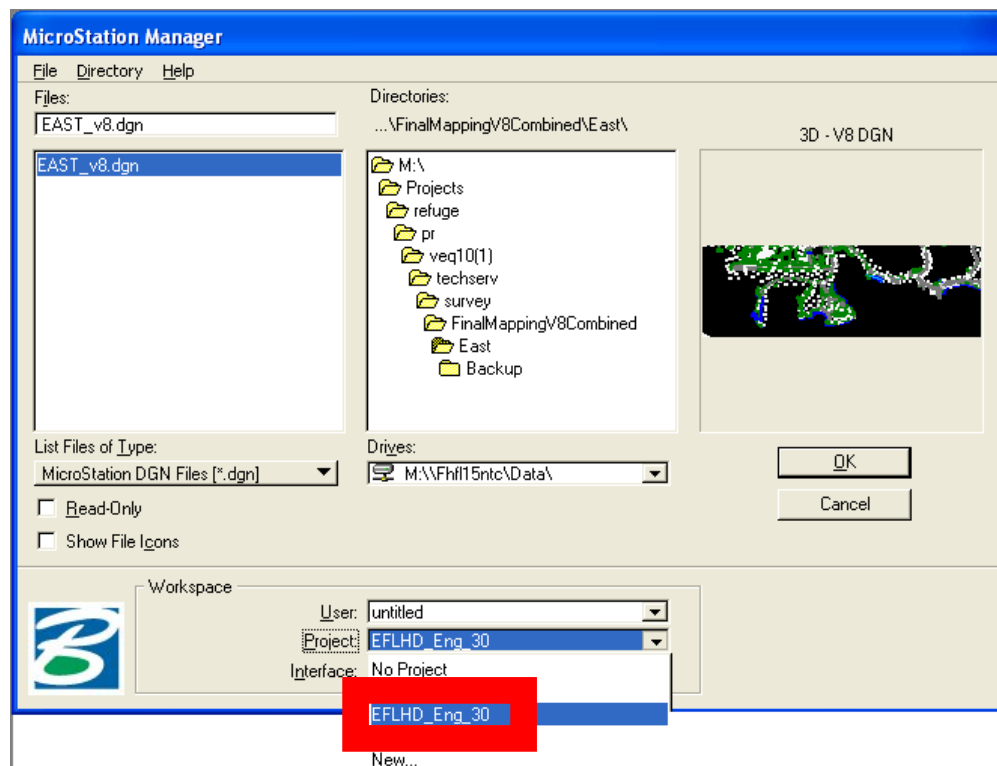
```
#####
#          Created by SHOUKAT NAWAZ on December 20, 2006          #
#          Last Modified on December 20, 2006 by Shoukat Nawaz    #
# This file is used by Eastern Federal Lands Highway Division to  #
#          configure system variables with in Microstation V8.5.XX.XX #
#          #
#####

#-----EFLHD Declared Variables-----
BENTLEYROOT           =C:/Bentleyv8/
PROJ_DATA              = M:/Projects/
_USTN_PROJECT         =M:/Cadd_resource_v8/Project_Configurations/

#-----Set variables for MicroStation features-----
_USTN_LICENSING       : ${BENTLEYROOT}Program/Licensing/
_USTN_DISPLAYALLCFGVARS : 0
MS_UNITS_SHOWALL     = 1
MS_OPENV7            = 3
MS_V7AUTOSAVE_NODIALOG = 1
MS_OTWREG_NOCHECK    = 1
```

You need to modify the following line(variables):

- **“BENTLEYROOT = C:/Bentleyv8/”** is a variable that points to the installed location of MicroStation V8 on the workstation. You will need to change the path to match your workstation configuration.
- The next variable is **“PROJ_DATA = M:/Projects/”**, this points to the folder where the designer’s project are stored. Change this to match your design project location.
- The next variable is **_USTN_PROJECT = M:/Cadd_resource_v8/Project_Configurations/**, this points to the Project Configuration Files, or .pcf files. Project Configuration file will point towards the setup criteria files for X_30 in English or Metric or bridge jobs. It is necessary to select the appropriate .pcf file from MicroStation Manager before opening the design file, as shown below. You will need to change the path to match the location you extracted the **CADD_resource_v8** folder to.



- The remaining variables do the following and do not need to be modified:
 - USTN_LICENSING** – Designates the location of the MicroStation license file.
 - _USTN_DISPLAYALLCFGVARS** – Enables the **_USTN_** variables from being listed or not.
 - MS_UNITS_SHOWALL** – Gives all available working units
 - MS_OPENV7** - Determines how v8 will open J files
 - MS_V7AUTOSAVE-NODIALOG** - Automatically enables the V7 Auto save.
 - MS-OTWREG_NOCHECK** – Disables the Bentley Registration dialog box.

The **EFLHD.cfg** file can reside on the server or can be copied to each system. After you have made the modifications to EFLHD.cfg, copy it to a location of your preference.

Recommendation would be to leave it under the **CADD_resource_v8** folder.

STEP III :- Modify “**EFLHD_mslocal.cfg**” configuration file as shown from **CADD_resource_v8** folder and copy it to the config folder in MicroStation. Open **EFLHD_mslocal.cfg** file with any text editor. It will look like this:

```
#####  
#          Created by SHOUKAT NAWAZ on December 20, 2006          #  
#          Last Modified on December 20, 2006 by Shoukat Nawaz    #  
#          This file is used by Eastern Federal Lands Highway Division to configure system #  
#          variables with in Microstation V8.5.XX.XX              #  
#                                                                #  
#####  
MSDIR = C:/Bentleyv8/Program/Microstation/  
EFLHD_CONFIG = M:/Cadd_resource_v8/  
_USTN_SYSTEM      : $(MSDIR)config/system/  
  
%if exists ($(EFLHD_CONFIG)eflhd.cfg)  
    %include $(EFLHD_CONFIG)eflhd.cfg  
%endif  
  
%include $(MSDIR)config\msconfig.cfg
```

You need to modify the following lines (variables):

- **MSDIR = C:/Bentleyv8/Program/Microstation/ .**
The variable MSDIR is a Bentley variable that must point to the folder “MicroStation” using the path that MicroStation was installed to. You will need to change this path to match the path for MicroStation on your computer(s).
- **EFLHD_CONFIG = M:/Cadd_resource_v8/**
This variable is used to point to the location of the eflhd.cfg file that you modified in STEP II. Modify the path to point to your location of the eflhd.cfg file.

After you’ve finished the edits to the EFLHD_mslocal.cfg file, you need to copy it to the default config folder of MicroStation. The default location of this folder for this example is: “C:\Bentleyv8\Program\Config\”.

STEP IV:- There is a desktop shortcut icon name “EFLHD MicroStation” in **CADD_resource_v8/ Directory**. Copy this shortcut to your desktop. Right click on the icon and select “properties” and modify the path to point to the location of your ustation.exe file and the location of the MicroStation Config folder where you copied EFLHD_mslocal.cfg file.

STEP V:- Project Level Configuration Files:

Underneath the folder **CADD_resource_v8** is a folder “**Project_Configurations**”. Project level configuration files for the setup criteria are sitting in this folder.

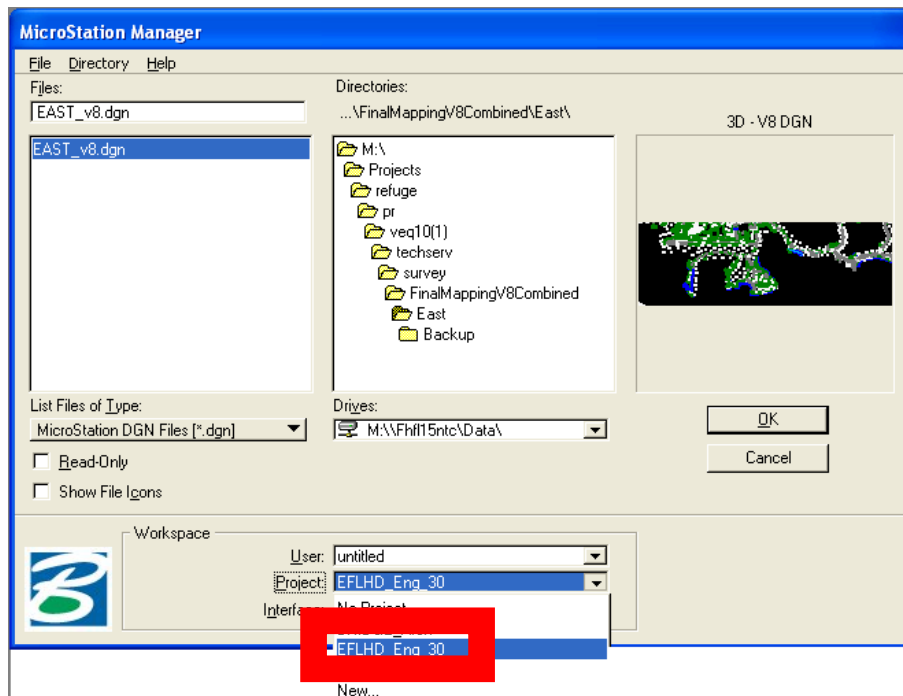
EFLHD_Eng_30.pcf – This file loads specific settings using Survey Foot Units for X_30 criteria for both Geopak and MicroStation.

Open this file (EFLHD_Eng_30.pcf) and change the following variables to point the location of your **CADD_resource_v8** folder as shown below:

- If you have this folder in m:\ drive, then
EFLHD = m:/CADD_resource_v8/X_30/
- If you have Geopak installed in C:\Geopak88\ directory, then the variable **GPK_ENGMET_TXTFILE** will be set as shown below
GPK_ENGMET_TXTFILE < C:/Geopak88/bin/engmet.txt
- You can set the path of the text editor as “UltraEditor” you want to use with Geopak as shown below:
(We use most general text editors in EFLHD that is why this variable is not set in this configuration file).
GPK_EDITR < C:/program files/ultraeditor/ultraeditor.exe
GPK_SUPER_EDITOR < C:/program files/ultraeditor/ultraeditor.exe

Once you have these edited, you can start MicroStation.

From MicroStation Manager workspace option, you’ll see text field labeled “Projects:”, click the drop down list arrow and you’ll see the project configuration files “EFLHD_Eng_30” you just edited. Select the files “EFLHD_Eng_30” for your project, and then select the design file you want to work on and you should be set.



Notes:-

1. *The “/” will be used rather than “\” for path name in writing configuration file.*
2. *If any of the paths you are modifying have a space in them, the path needs to be encapsulated in quotes - BENTLEYROOT = “C:/Program Files/Bentley/”.*
3. *This configuration is for **Geopak 08.08.02.40** , and **MicroStation 08.05.02.55 Editions**.*