

Eco-Logical: An Ecosystem Approach to Developing Infrastructure Projects

*Multi-Agency
Initiative & Publication*

*Presenter: Kimberly Majerus,
FHWA-Resource Center*

Linking Conservation & Transportation Planning

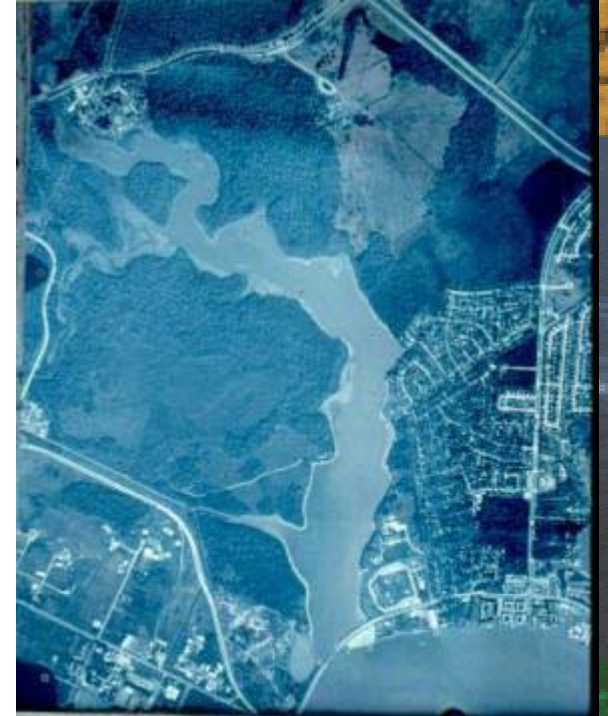
Morning, 02/21/08, FHWA & MARC, KC, MO

Agency Challenges & Lessons Learned

- 🔔 **Unknowns & duplicated efforts**
- 🔔 **Limits posed by jurisdictions**
- 🔔 **Can be piecemeal and ineffective if environmental focus is only:**
 - at project level, project by project,
 - site by site,
 - single resource

(include environ priorities early - in long-range planning)

- 🔔 **Vanishing opportunities**



Eco-Logical: Approach to Solutions



1. Exec Orders & Inter-agency Steering Team*

* 8 federal agencies (BLM, EPA, FHWA, NOAA, NPS, USACE, USFS, USFWS) and 2 state trans, 1 toll agency)

2. Develop/Publish Eco-Logical framework

3. Engage participants, at all levels, public & private

4. Develop & implement strategies and solutions

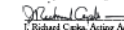
(long-range planning through to project delivery)

Eco-Logical: An Ecosystem Approach to Developing Infrastructure Projects


Prepared by the Steering Team
April 2006


Signed by the Steering Team Partners' Leadership


Dale Bosworth, Chief of Forest Service
Forest Service
U.S. Department of Agriculture


J. Richard Caplan, Acting Administrator
Federal Highway Administration
U.S. Department of Transportation

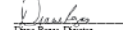

Kathleen Clark, Director
Bureau of Land Management
U.S. Department of the Interior



George S. Dunlop, Principal Deputy
Assistant Secretary
Department of the Army


H. Dale Hall, Director
U.S. Fish and Wildlife Service
U.S. Department of the Interior


Fran Munnick, Director
National Park Service
U.S. Department of the Interior


Anne Miller, Director
Office of Federal Activities
U.S. Environmental Protection Agency


Elaine Rogers, Director
Office of Wetlands, Oceans, and Watersheds
U.S. Environmental Protection Agency


James R. Wald, Chief Counsel
National Marine Fisheries Service
National Oceanic and Atmospheric Administration

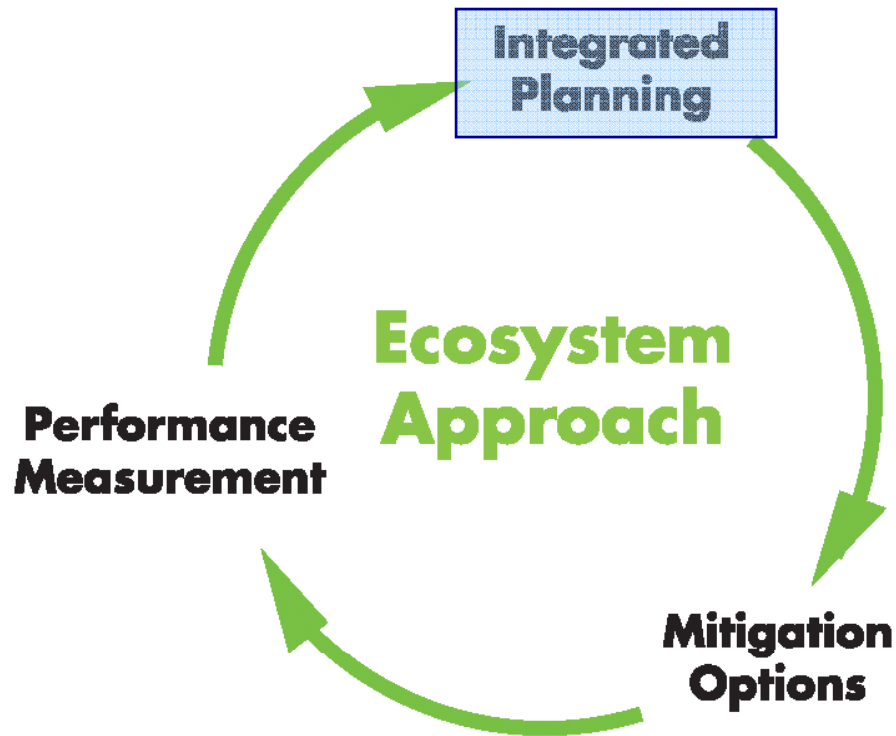
Eco-Logical: Ecosystem Approach

WHAT IS AN ECOSYSTEM ?

8 Federal Agency Offices Agree:

***An interconnected community of living things and
the physical environment
within which they exist (humans included)***

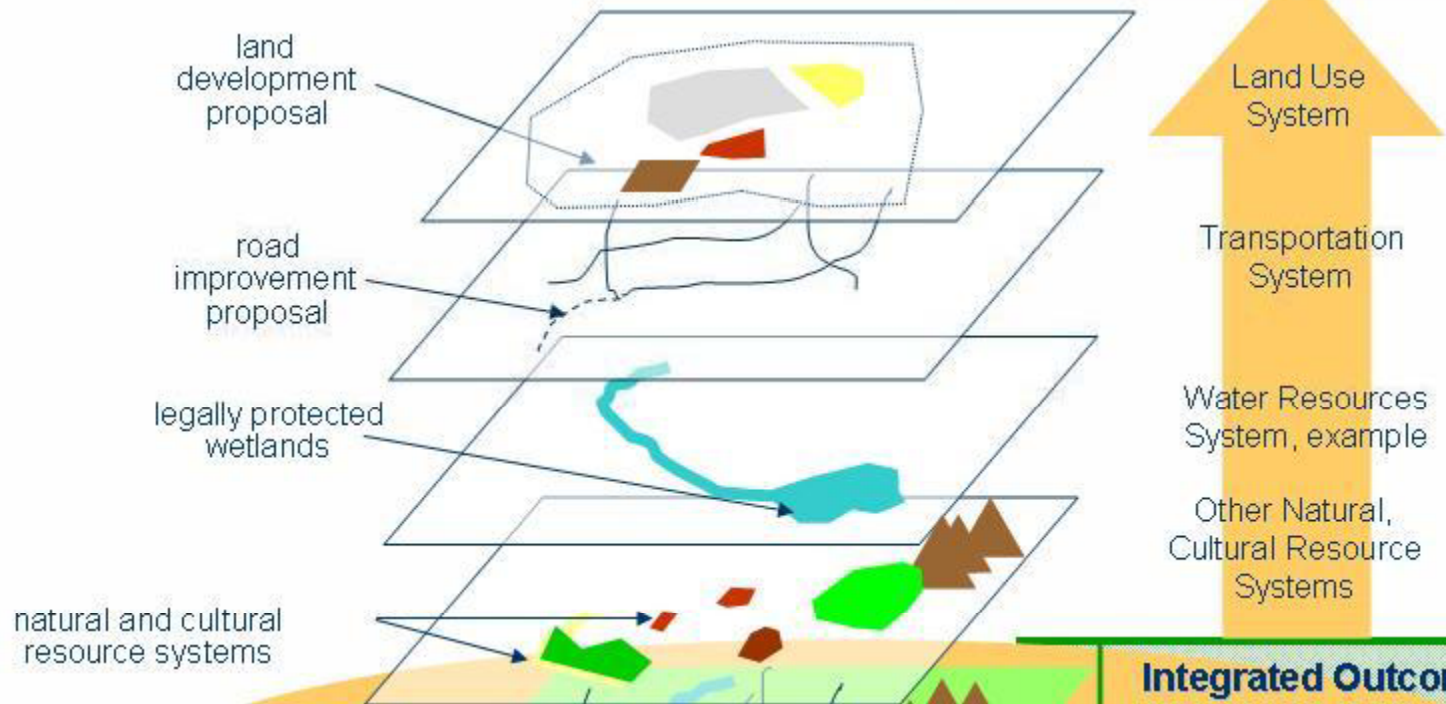
Ecosystem Approach: Integrated Planning



Integrated planning is focus for today and tomorrow for Linking Conservation & Transportation Planning workshop

Ecosystem Approach: A Systems Perspective

Ecosystem as the foundation



**Ecosystem Based
Integrated Outcomes**

Integrated Outcomes

support multiple benefits
& improve quality of life,
Based on Ecosystem Foundation

Use Interdisciplinary Participation

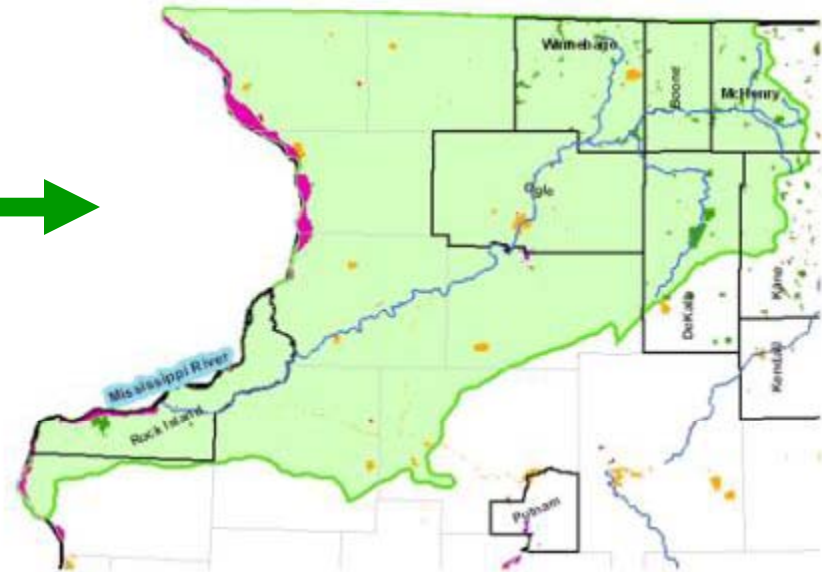
Eco-Logical: Solutions



- *Fulfill relevant statutes*
- *Healthy ecosystems support sustainable economies and communities*
- *Useful at any time in planning & project delivery*
- *Non-prescriptive: adapt to integrate planning, information, decisions, people -- across all levels*

For workshop: Eco-Logical as framework for integrated planning

Eco-Logical: Expand to Broad Landscape Scale, Contiguous Areas, Natural Geog Boundaries



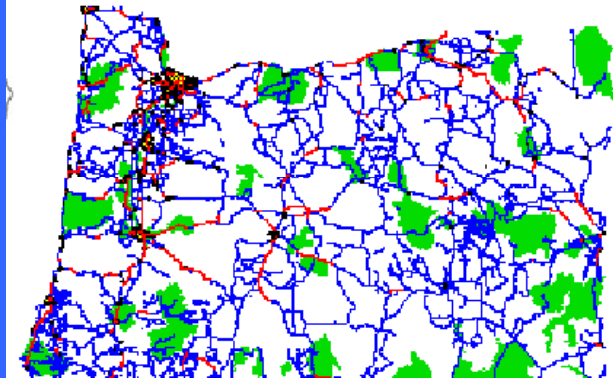
Supports Multiple Benefits, Quality of Life for Long-term

Eco-Logical: Integration

Integrates across:

- Agencies and levels
- Geographic regions
- Multiple resources
- Multiple jurisdictions
- Public & private sectors

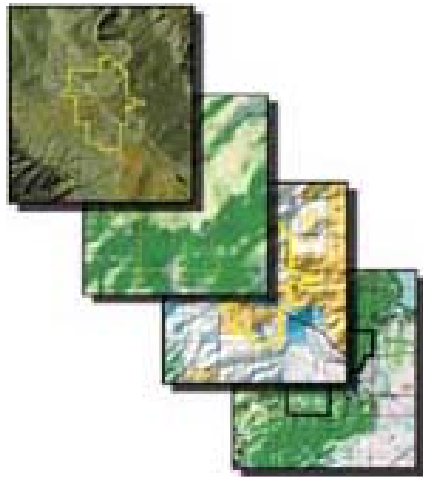
Natural Resource Priorities and Plan



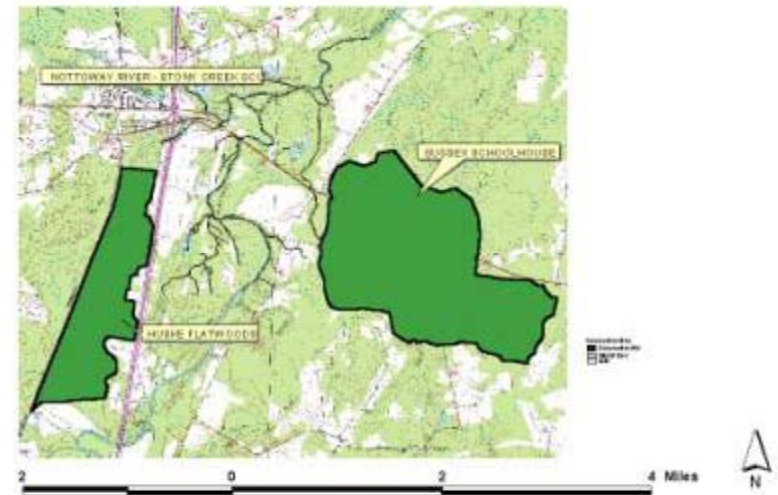
Simple, Integrated Map: Trans Plan, Urban areas, Natural resource areas

Eco-Logical Integrated Planning: can use a Regional Ecosystem Framework

- Overlay maps, use natural & historic resource inventories
- Partners define the “ecosystem” (*humans included*)
- Interaction of plans, goals, objs, shared multiple benefits
- Establish priorities and steps (short-, mid-, long-term)



Natural resource, priority uses

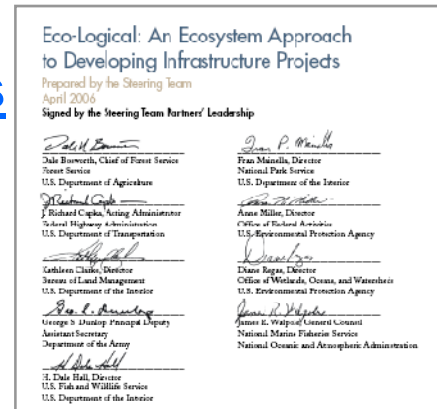


Eco-Logical Implementation & Next Steps

Written multi-agency publication with signatures as “permission” document for:
“Eco-Logical: An Ecosystem Approach to Developing Infrastructure Projects”

“Eco-Logical” written guide available online at :

http://www.environment.fhwa.dot.gov/ecological/eco_entry.asp



FHWA Support:

- FHWA funding & selection of applicants for efforts in 2007-2011
- FHWA Administrator's Award to “Eco-Logical” inter-agency Steering Team

**Implementation across all levels and organizations
(you are invited!)**



FHWA Headquarters Contact: Carol Adkins (Carol.Adkins@fhwa.dot.gov)