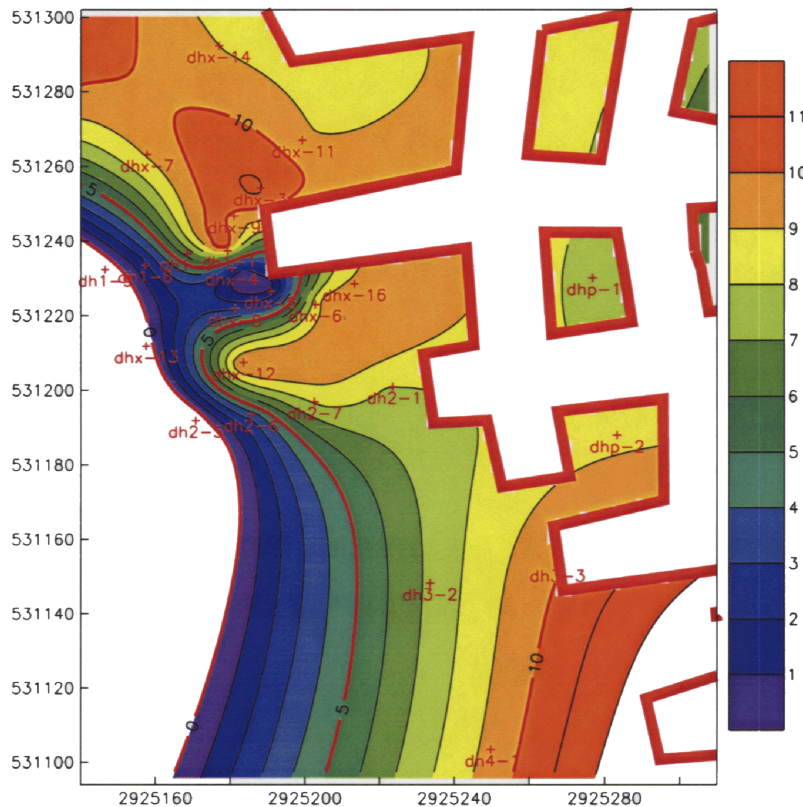


**Figure 34**  
**Sandstone Isopach Map**

0 10 20 30 40 50 60 70 80  
FEET

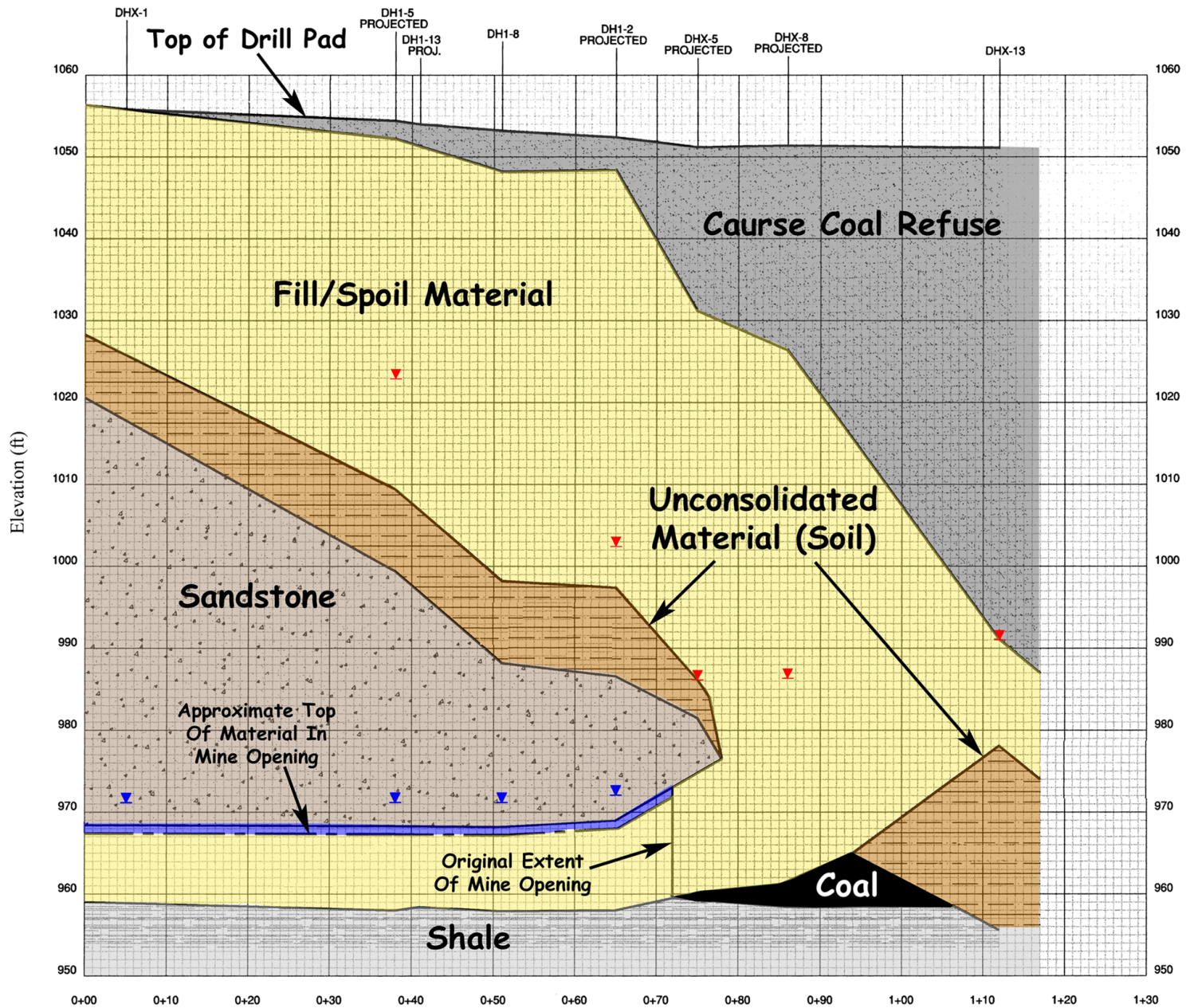
This figure was prepared by the Office of Surface Mining using Earthvision Version 5.1 for Unix. The data was taken from the Field Test Borings prepared by Triad Engineering, Inc.



**Figure 35**  
**Coal Isopach Map**

0 10 20 30 40 50 60 70 80  
FEET

This figure was prepared by the Office of Surface Mining using Earthvision Version 5.1 for Unix. The data was taken from the Field Test Borings prepared by Triad Engineering, Inc.



- - - - - APPROX. TOP OF MATERIAL PRESENT IN MINE  
 ▼ WATER LEVEL DURING DRILLING  
 ▼ WATER LEVEL FOLLOWING DRILLING

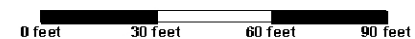
Distance (ft)

**Figure 36 Section D-D**

# Figure 37

## Mise a la Masse Survey Data

Big Branch Slurry Impoundment  
Martin County Coal Corporation  
Martin Co., KY



### Legend:

- + Mise a la Masse Survey Station
- ◇ Drill Hole (by others)

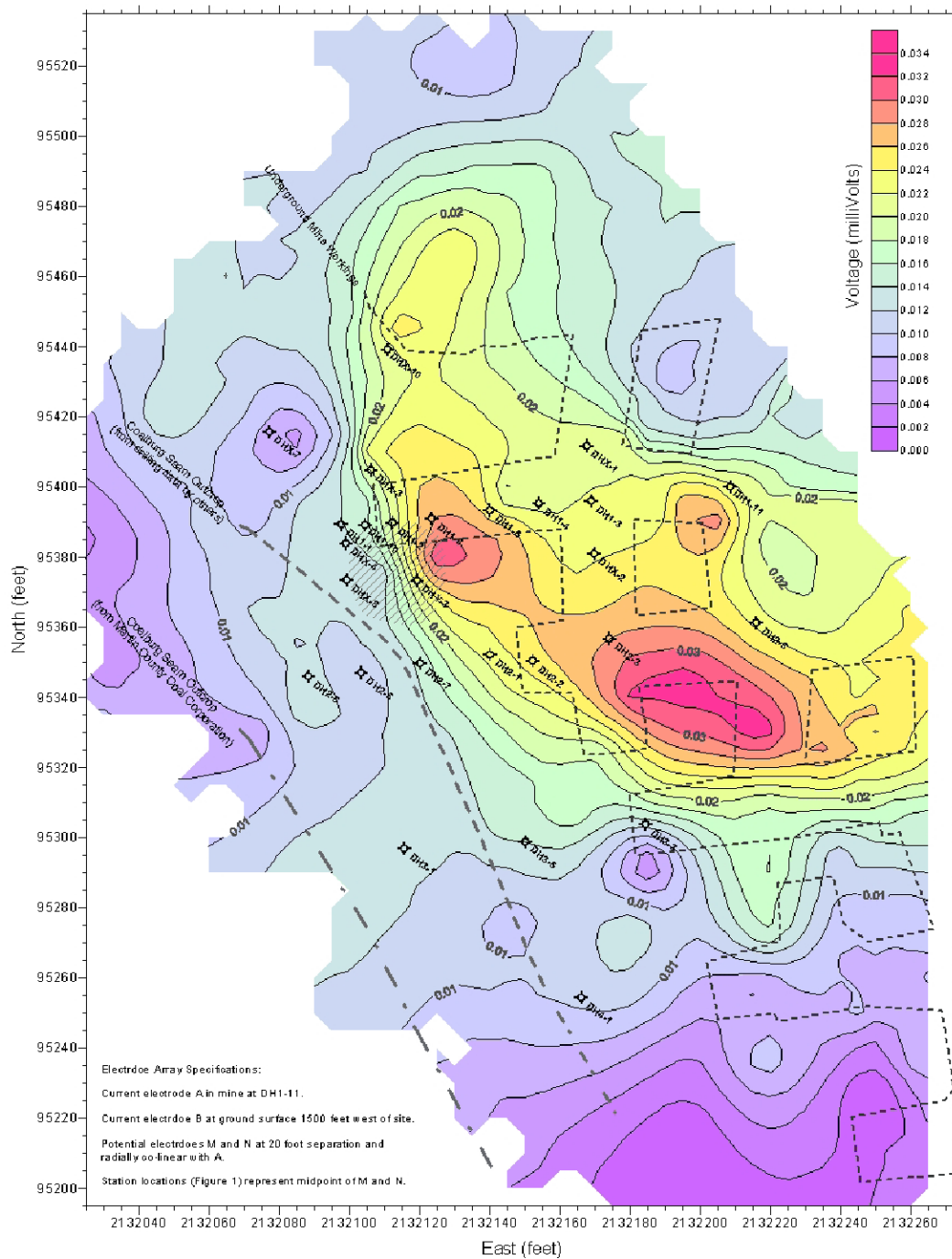
### Notes:

Coordinates in KY North State Plane Grid,  
NAD-83 geodetic datum.

Survey stations and drill hole locations  
from GPS survey by Enviroscan, Inc.

Mine plan and coal outcrop lines digitized  
from portions of "MSHA Drilling Program"  
map provided by MSHA.

Enviroscan, Inc.  
Project No. 120015  
Rev. 01/03/01



### Electrode Array Specifications:

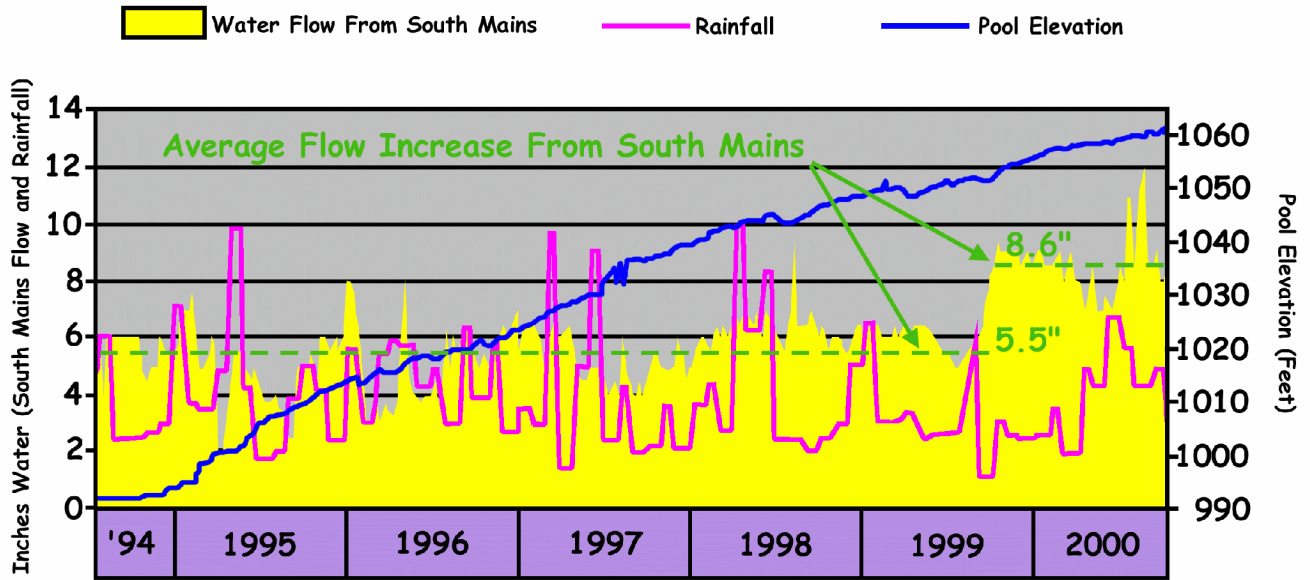
Current electrode A in mine at DH1-11.

Current electrode B at ground surface 1500 feet west of site.

Potential electrodes M and N at 20 foot separation and  
radially co-linear with A.

Station locations (Figure 1) represent midpoint of M and N.

**Figure 38**  
**South Mains Portal Outflow vs Water Sources**



**Figure 39**  
**Refuse Slip In Southwest Fork Of Impoundment**