



## Office of Federal Lands Highway

U.S. Department of Transportation  
Federal Highway Administration

Associate Administrator  
**John Baxter**  
202-366-9494  
john.baxter@dot.gov  
[www.fhwa.dot.gov/flh/](http://www.fhwa.dot.gov/flh/)

Federal Lands Highway provides planning, design, and engineering services to support the highways and bridges that provide access to and within federally owned lands.



US Army Corps of Engineers



April 2008  
See <http://www.fhwa.dot.gov/flh/>  
for sources

## Federal Lands Highway Program (FLHP)

Improving transportation to and within federal and tribal lands



# Office of Federal Lands Highway

**What is the Office of Federal Lands Highway?** The Office of Federal Lands Highway (FLH), a part of the Federal Highway Administration, provides program stewardship and transportation engineering services for planning, design, construction, and rehabilitation of the highways and bridges that provide access to and through federally owned lands. FLH administers and delivers several

programs, including the Federal Lands Highway Program (FLHP). Through these programs and in coordination with its partners and customers, FLH provides financial resources, valued technical assistance, and context sensitive solutions to federal, state, tribal, and local partners.

**Vision:** Creating the best transportation system in balance with the values of Federal and Tribal lands.

**Mission:** Improving transportation to and within Federal and Tribal Lands and providing technical services to the highway community.

**Accessing America's Treasures  
for over 25 years:  
the Federal Lands Highway Program**

### Indian Reservation Roads (IRR) Program

94,400 miles of roads  
7,652 bridges

### Park Roads and Parkways (PRP) Program

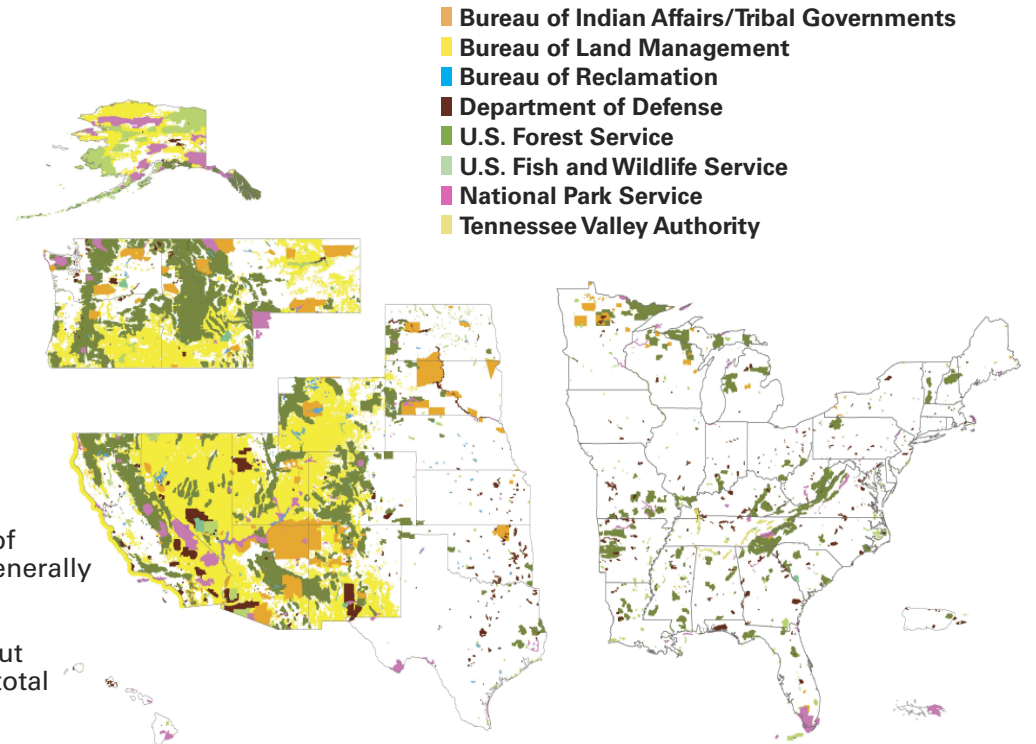
9,550 miles of roads  
1,414 bridges  
63 tunnels

### Public Lands Highway (PLH) Program (Forest Highways)

29,200 miles of roads  
**Refuge Roads (RR) Program**  
4,900 miles  
265 bridges  
5,153 parking lots

There are also more than 300,000 miles of federally owned roads, although these generally are not eligible for FLHP funding.

\* The federal government has title to about 650 million acres -- roughly 30% of the total area of the United States.



## Office of Federal Lands Highway

**Partners.** The four offices of FLH — the Eastern, Central, and Western Federal Lands Highway Divisions, and Headquarters — work closely with their FLMA and Indian partners to improve the transportation system serving Federal and Indian lands. In doing so, FLH seeks to achieve a balance that reflects each partner’s concerns while promoting the highest standards of road safety, contextual sensitivity (i.e., ensuring the “look and feel” of the roads and bridges complement their native environmental surroundings), and economic growth for local residents. Our partners include:

- Bureau of Indian Affairs
- U.S. Forest Service
- National Park Service
- U.S. Fish and Wildlife Service
- Bureau of Land Management
- Military Surface Deployment and Distribution Command
- U.S. Army
- U.S. Army Corps of Engineers
- U.S. Navy
- Tennessee Valley Authority
- Bureau of Reclamation

**Programs.** FLH administers a coordinated network of public roads on federal and tribal lands. FLH’s four offices assist its partners through several different programs as part of the Safe, Accountable, Flexible, Efficient Transportation Equity Act: A Legacy for Users (SAFETEA-LU).

- Federal Lands Highway Program
  - Indian Reservations Roads Program
  - Park Roads and Parkways Program
  - Refuge Roads Program
  - Forest Highway Program
  - Public Lands Highway Discretionary Program
- Emergency Relief Program for Federally Owned Roads
- Planning activities, bridge inspections, and environmental support.

### SAFETEA-LU Authorized Funding

Program	FY 2005	FY 2006	FY 2007	FY 2008	FY 2009
Indian Reservation Roads	\$300.0	\$330.0	\$370.0	\$410.0	\$450.0
Indian Reservation Bridges	\$14.0	\$14.0	\$14.0	\$14.0	\$14.0
Park Roads and Parkways	\$180.0	\$195.0	\$210.0	\$225.0	\$240.0
Forest Highways	\$173.3	\$186.7	\$186.7	\$193.3	\$200.0
Public Lands Highways Discretionary	\$86.7	\$93.3	\$93.3	\$96.7	\$100.0
Refuge Roads	\$29.0	\$29.0	\$29.0	\$29.0	\$29.0



Natchez Trace Parkway, Mississippi (Park Roads)



Don Edwards San Francisco Bay National Wildlife Refuge, California (Refuge Roads)



Tongass National Forest, Alaska (Forest Highways)

#### Contact Information:

Office of Federal Lands Highway  
1200 New Jersey Avenue, SE  
Washington, DC 20590  
Telephone: (202) 366-9494  
Fax: (202) 366-7495



U.S. Department of Transportation  
Federal Highway Administration  
Office of Federal Lands Highway