

Gas Mileage Tips

Here are some tips to help you reduce the amount of gas you use (and the amount of greenhouse gases your car emits). By following these tips, you're maximizing your car's fuel economy capability.

- **Drive more efficiently** – avoid quick starts and stops, and obey the speed limit!
- **Keep your car in shape** – make sure your tires are properly inflated and change your oil according to the manufacturer's recommended schedule
- **Plan trips** – plan your commute to avoid peak traffic congestion; for longer trips, try to pack everything in the car and not on roof racks or carriers; remove heavy items that aren't needed from the trunk
- **Choose a more efficient vehicle** – visit the EPA-DOE fuel economy website at www.fueleconomy.gov to explore your options

**All 2008
Models Will
Have Two
New Things
in Common...**



New and Improved Fuel Economy Estimates

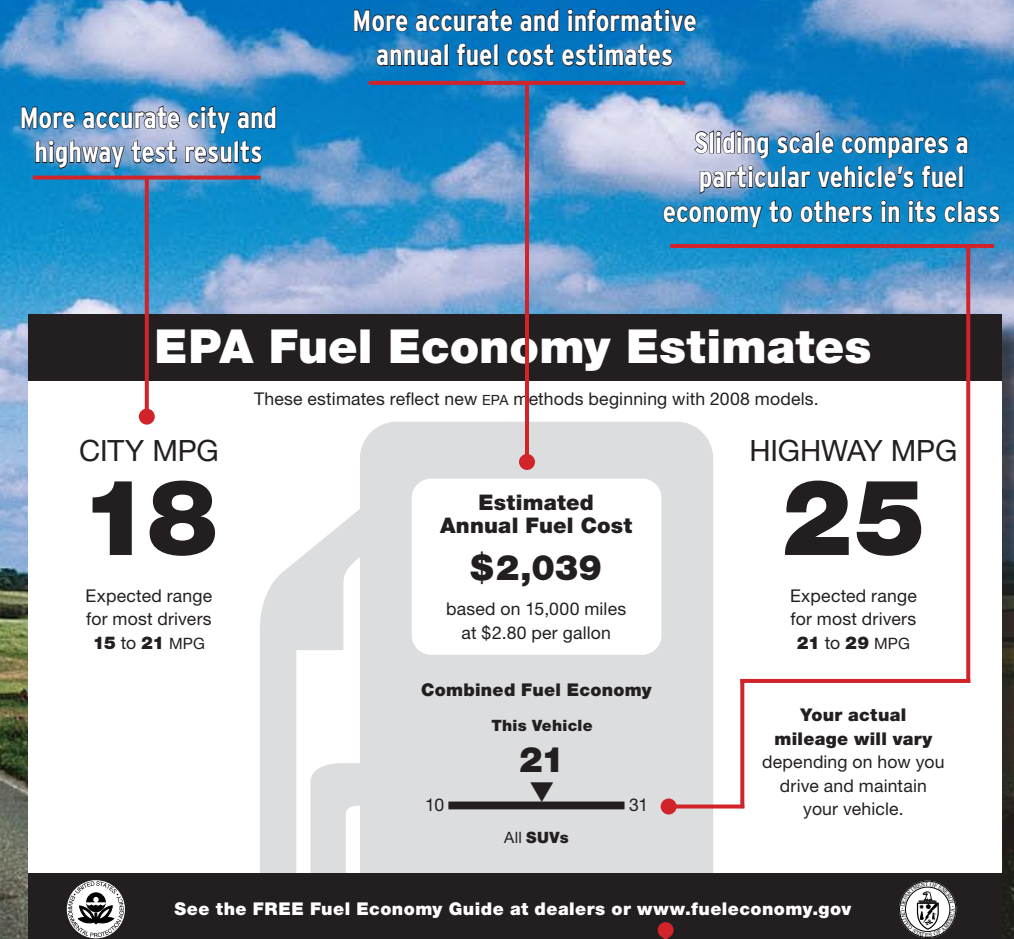
More Accurate Estimates

The U.S. Environmental Protection Agency has revised the way it determines city and highway fuel economy estimates for vehicles. Starting with 2008 models, the new estimates more accurately reflect realistic driving conditions and include considerations for things such as cold-weather operation, higher driving speeds, air conditioning usage, and faster acceleration.

Facts You Should Know

- The new city and highway estimates for 2008 models will likely be lower than those for models from previous years. The new estimates, however, do not mean cars are less fuel efficient. The new tests just reflect more realistic driving conditions.
- EPA continues to perform testing under strictly controlled laboratory conditions to ensure each model is tested in exactly the same way.
- Standardized testing allows consumers to compare the fuel economy of one model to another with confidence.
- Even though the new testing methods provide more realistic estimates, drivers' actual mileage will still vary according to factors such as road conditions, how and where they drive, vehicle condition and maintenance, fuel variations, vehicle variations, and engine break-in.
- Individual fuel costs will differ depending on annual miles driven, driving behaviors, and fluctuations in fuel prices.
- For more information on EPA's new fuel economy label or how to achieve the best fuel mileage for any vehicle, visit www.fueleconomy.gov.

New and Improved Fuel Economy Label



Web link added for more information