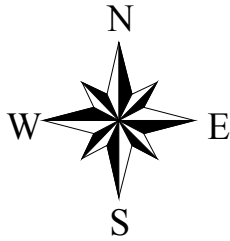


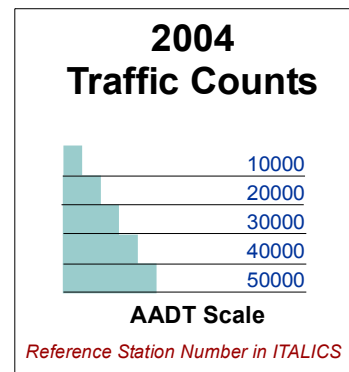
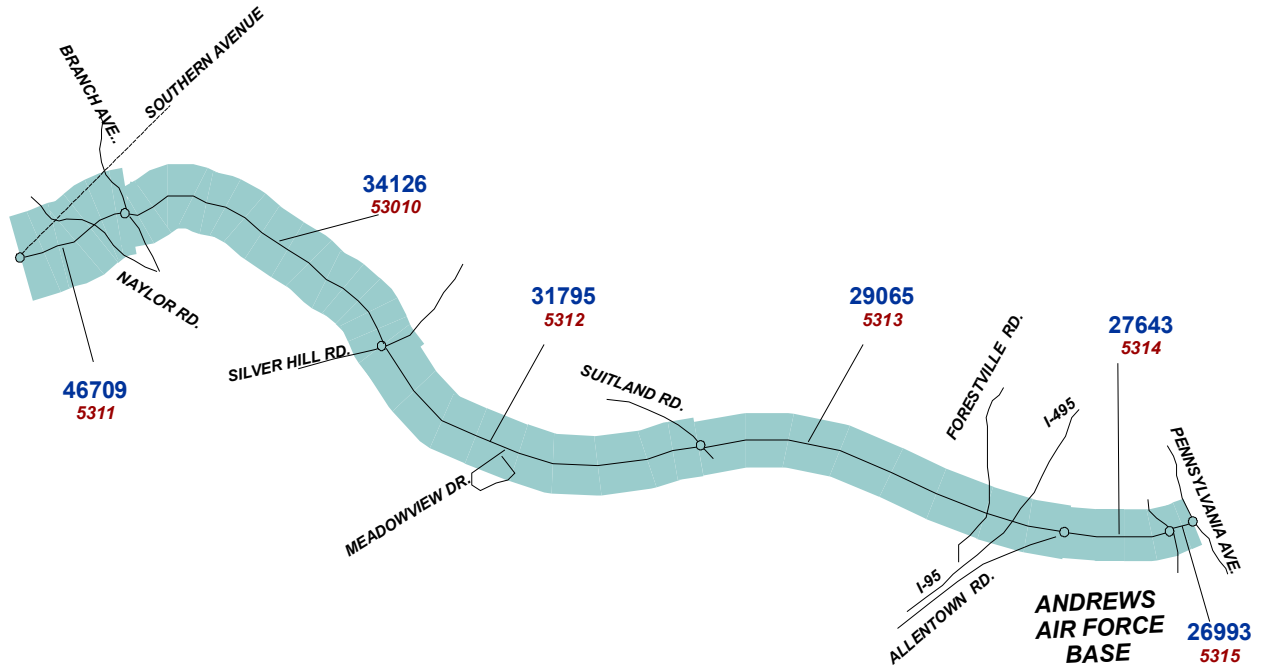
Suitland Parkway Traffic Package





Suitland Parkway

Maryland
U.S. Department of Interior
NATIONAL PARK SERVICE



SUITLAND PARKWAY

TRAFFIC TRENDS SUMMARY

Rt. Roadway No. Segment	Sta. ID.	Length	AADT				VMT(1000's)				
			1988	1991	1994	2004	1988	1991	1994	2004	
1 Suitland Parkway - D.C- Maryland Line to Branch Ave.	5311	0.47	32154	31113	31224	46709	5516	5337	5356	8013	
1 Suitland Parkway - Branch Ave. to Silver Hill Road	53010	1.43	19536	22420	15737	34126	10197	11702	8214	17812	
1 Suitland Parkway - Silver Hill Road to Suitland Road	5312	1.82	19565	21032	16245	31795	12997	13972	10792	21121	
1 Suitland Parkway - Suitland Road to Allentown Road	5313	2.03	16856	17742	16442	29065	12489	13146	12183	21536	
1 Suitland Parkway - Allentown Road to Entrance Andrews AFB.	5314	0.42	17032	16886	12054	27643	2611	2589	1848	4238	
1 Suitland Parkway - Entrance Andrews AFB to Pennsylvania Ave.	5315	0.21	16753	19758	14132	26993	1284	1514	1083	2069	
Note AADT -- Annual Average Daily Traffic							45094	48260	39476	74789	
VMT-- Vehicle Miles of Travel											

SUITLAND PARKWAY

2004 TRAFFIC VOLUME SUMMARY

Sta. ID.	STATION LOCATION	BEGIN DATE	24 HR. VOL.	SEAS. FACT.	ANN. FACT.	SADT	AADT	REF. STA.
53010	Suitland Parkway - Branch Ave. to Silver Hill Road					34598	34126	Self
5311	Suitland Parkway - D.C- Maryland Line to Branch Ave.	10/25/2004	51544	0.9187	0.9062	47356	46709	53010
5312	Suitland Parkway - Silver Hill Road to Suitland Road	10/26/2004	35086	0.9187	0.9062	32235	31795	53010
5313	Suitland Parkway - Suitland Road to Allentown Road	10/26/2004	32073	0.9187	0.9062	29467	29065	53010
5314	Suitland Parkway - Allentown Road to Entrance Andrews AFB.	10/27/2004	30504	0.9187	0.9062	28025	27643	53010
5315	Suitland Parkway - Entrance Andrews AFB to Pennsylvania Ave.	11/1/2004	29787	0.9187	0.9062	27367	26993	53010

Note: AADT -- Annual Average Daily Traffic

SADT -- Seasonal Average Daily Traffic computed using data for the months containing 80% of annual volume.

REF. STA. -- a permanent Automated Traffic Recorder (ATR) reference station used to obtain seasonal and annual adjustment factors for coverage counts.

SUITLAND PARKWAY

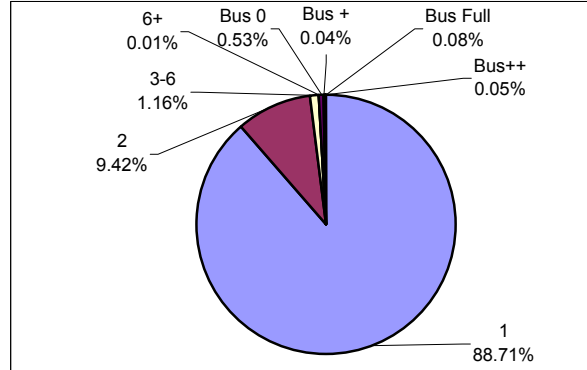
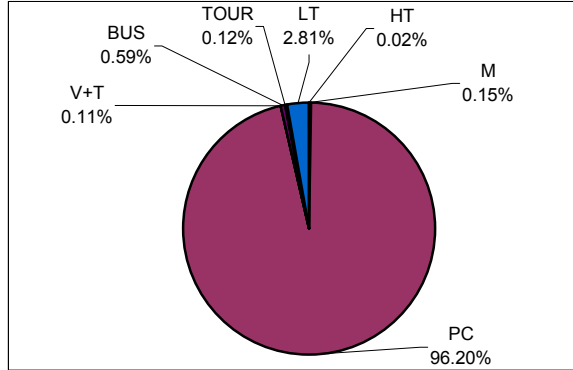
2004 TRAFFIC COMPOSITION SUMMARY

Vehicle Classification

Vehicle Occupancy

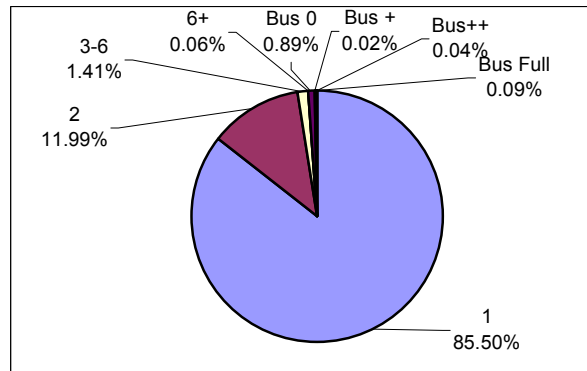
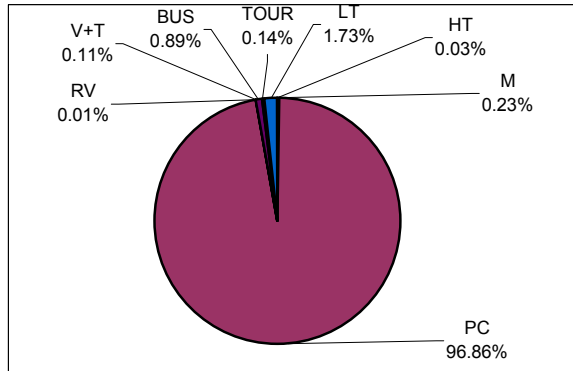
Location: STATION 53010

Location: STATION 53010



Location: STATION 5313

Location: STATION 5313



CLASSIFICATION LEGEND:

OCCUPANCY LEGEND:

No.	Vehicle Type	FHWA Class
M	Motorcycles	Class 1
PC	Passenger Cars	Class 2
RV	Recreational Vehicles	N/A
V+T	Vehicles/RV pulling Trailer	N/A
BUS	Transit/Shuttle Buses	Class 4
TOUR	Tour Buses	Class 4
LT	Light-duty Trucks	Classes 3, 5
HT	Heavy-duty Trucks	Classes 6 - 13

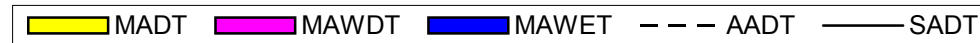
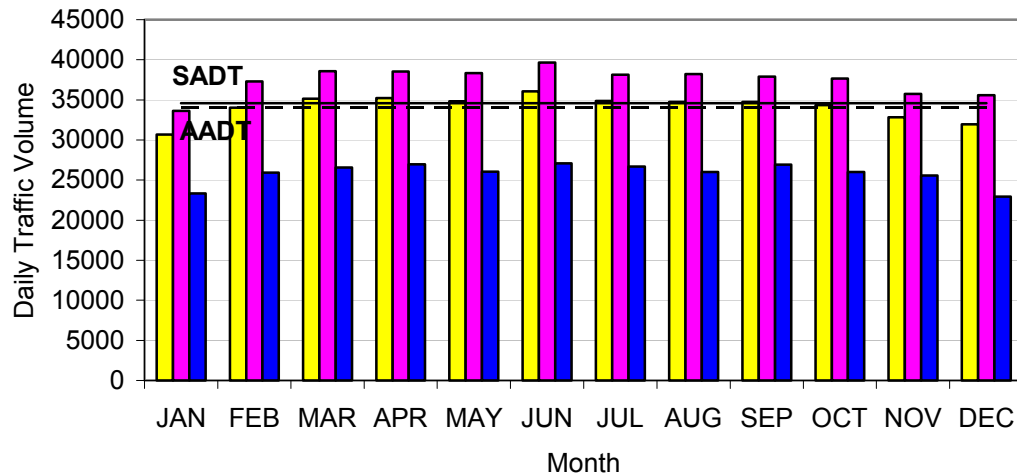
No.	Vehicle Occupancy
1	1 Occupant
2	2 Occupants
3-6	3-6 Occupants (car load)
6+	More than 6 Occupants, (non-Bus)
Bus 0	Bus, No Passengers
Bus +	Bus, Few Passengers
Bus++	Bus, Semi-Loaded
Bus Full	Bus, Fully Loaded

Note: Vehicle Classifications and Vehicle Occupancy values represented by 0% (No Occurrence) are not shown on the charts.

SUITLAND PARKWAY

Station: 53010 Suitland Parkway - Branch Ave. to Silver Hill Road

Month	Year	Average Day of Month (MADT)	Average Weekday of Month (MAWDT)	Average Weekend Day of Month (MAWET)	Annual Average Daily Traffic Factor (AADTF)	Seasonal Average Daily Traffic Factor (SADTF)
1	2004	30697	33644	23327	1.0143	1.0284
2	2004	34041	37289	25920	0.9152	0.9278
3	2004	35140	38563	26584	0.8849	0.8972
4	2004	35233	38536	26977	0.8856	0.8978
5	2003	34833	38339	26066	0.8901	0.9024
6	2003	36056	39648	27079	0.8607	0.8726
7	2003	34883	38157	26698	0.8944	0.9067
8	2003	34740	38235	26005	0.8925	0.9049
9	2003	34758	37890	26927	0.9007	0.9131
10	2003	34333	37658	26020	0.9062	0.9187
11	2003	32831	35739	25560	0.9549	0.9681
12	2003	31965	35572	22947	0.9593	0.9726
Annual Average Daily Traffic (AADT)				34126		
Annual Average Weekday Traffic (AAWDT)				37439		
Annual Average Weekend Traffic (AAWET)				25843		
Seasonal Average Daily Traffic (SADT)				34598		



Note: AADTF is used to adjust coverage traffic volumes to AADT volume.
 SADTF is used to adjust coverage traffic volumes to SADT volume.
 SADT -- Seasonal Average Daily Traffic for the months containing 80% of annual volume.

Suitland Parkway

Maryland
U.S. Department of Interior
NATIONAL PARK SERVICE

