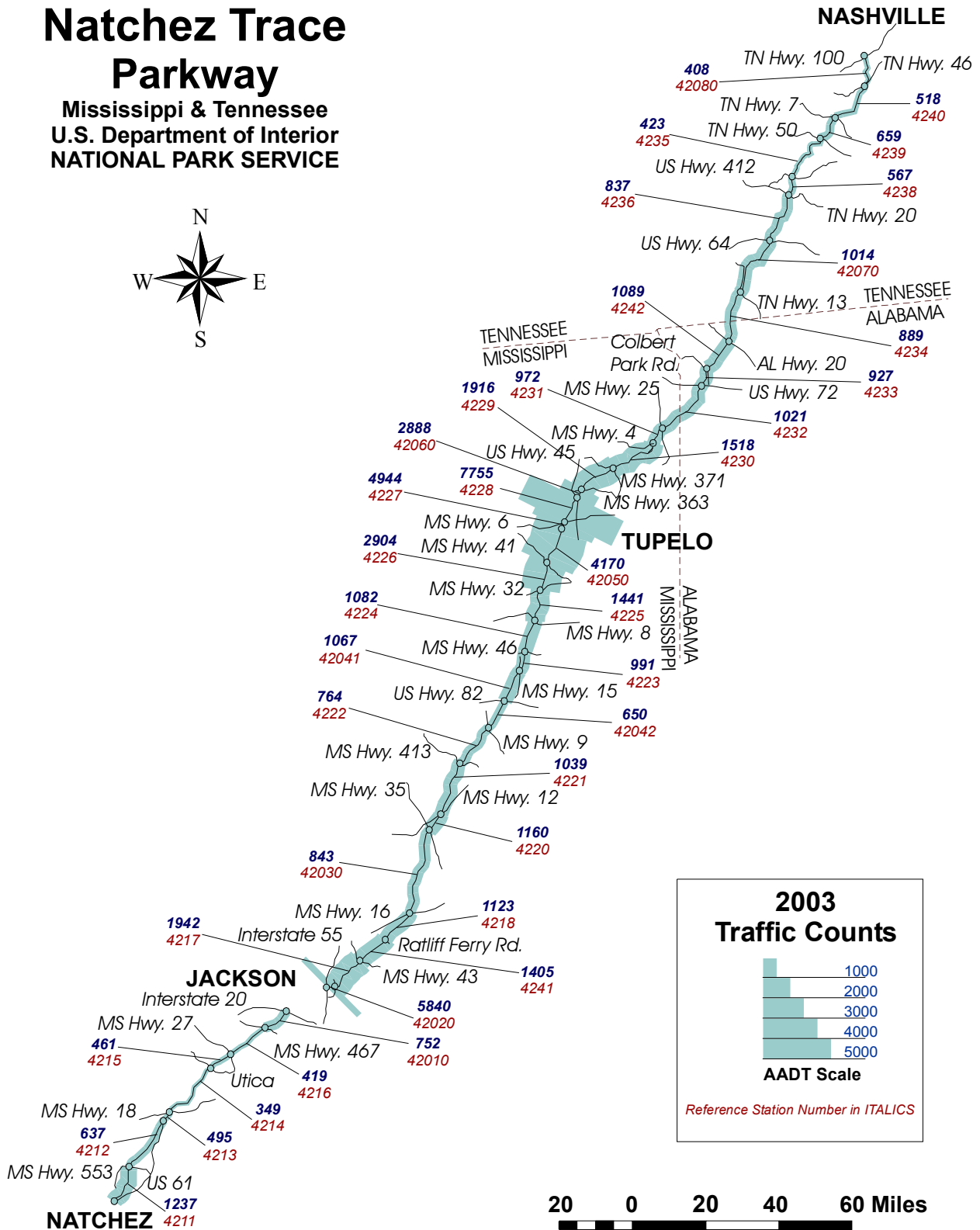
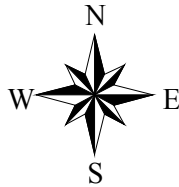


Natchez Trace Parkway Traffic Package



Natchez Trace Parkway

Mississippi & Tennessee
U.S. Department of Interior
NATIONAL PARK SERVICE



NATCHEZ TRACE PARKWAY

TRAFFIC TRENDS SUMMARY

Rt. No.	Roadway Segment	Sta. ID.	Length	AADT				VMT(1000's)			
				1988	1991	1994	2003	1988	1991	1994	2003
1	NT Parkway - US 61 near Natchez to MS Hwy 553	4211	12.01	410	742	603	1237	1797	3253	2643	5423
1	NT Parkway - MS Hwy 553 to US 61 near Port Gibson	4212	16.82	520	768	766	637	3192	4715	4703	3911
1	NT Parkway - US 61 near Port Gibson to MS Hwy 18	4213	4.17	440	481	403	495	670	732	613	753
1	NT Parkway - MS Hwy 18 to Utica Road	4214	17.78	440	569	436	349	2855	3693	2830	2265
1	NT Parkway - Utica Road to MS Hwy 27	4215	7.53	440	661	492	461	1209	1817	1352	1267
1	NT Parkway - MS Hwy 27 to MS Hwy 467	4216	12.47	650	516	500	419	2959	2349	2276	1907
1	NT Parkway - MS Hwy 467 to Interstate Hwy 20	42010	8.45	728	713	714	752	2245	2199	2202	2319
1	NT Parkway - Interstate Hwy 55 to Airport Road	42020	2.15	6155	6767	7543	5840	4830	5310	5919	4583
1	NT Parkway - Airport Road to MS Hwy 43	4217	11.31	2500	2424	2885	1942	10320	10007	11910	8017
1	NT Parkway - MS Hwy 43 to Ratliff Ferry Road	4241	8.99	2500	1925	1829	1405	8203	6317	6002	4610
1	NT Parkway - Ratliff Ferry Road MS Hwy 16	4218	11.25	2080	1247	2167	1123	8541	5120	8898	4611
1	NT Parkway - MS Hwy 16 to MS Hwy 35	42030	24.92	1641	1513	2120	843	14926	13762	19283	7668
1	NT Parkway - MS Hwy 35 to MS Hwy 12	4220	5.61	1430	813	1826	1160	2928	1665	3739	2375
1	NT Parkway - MS Hwy 12 to MS Hwy 413	4221	15.26	1140	863	1975	1039	6350	4807	11001	5787
1	NT Parkway - MS Hwy 413 to MS Hwy 9	4222	14.56	1230	1012	1774	764	6537	5378	9428	4060
1	NT Parkway - MS Hwy 9 to US Hwy 82	42042	8.82	1075	1022	1216	650	3461	3290	3915	2093
1	NT Parkway - US Hwy 82 to MS Hwy 15	42041	10.16	1088	1074	1278	1067	4035	3983	4739	3957
1	NT Parkway - MS Hwy 15 to MS Hwy 46	4223	5.21	1030	881	1619	991	1959	1675	3079	1885
1	NT Parkway - MS Hwy 46 to MS Hwy 8	4224	9.89	920	1059	2760	1082	3321	3823	9963	3906
1	NT Parkway - MS Hwy 8 to MS Hwy 32	4225	9.76	1210	1316	3005	1441	4311	4688	10705	5133
1	NT Parkway - MS Hwy 32 to MS Hwy 41	4226	7.78	1780	2344	4126	2904	5055	6656	11717	8246
1	NT Parkway - MS Hwy 41 to Tupelo Cliff Gookin Blvd	42050	11.6	3959	4423	5263	4170	16762	18727	22284	17656
1	NT Parkway - Tupelo Cliff Gookin Blvd to MS Hwy 6	4227	1.3	3050	4791	2210	4944	1447	2273	1049	2346
1	NT Parkway - MS Hwy 6 to US Hwy 45	4228	6.62	2920	4172	3982	7755	7056	10081	9622	18738
1	NT Parkway - US Hwy 45 to MS Hwy 363	42060	4.22	1940	2270	2851	2888	2988	3496	4391	4448
1	NT Parkway - MS Hwy 363 to MS Hwy 371	4229	11.44	1080	1613	1684	1916	4510	6735	7032	8000
1	NT Parkway - MS Hwy 371 to MS Hwy 4	4230	10.82	810	1097	1187	1518	3199	4332	4688	5995
1	NT Parkway - MS Hwy 4 to MS Hwy 25	4231	9.93	620	867	1214	972	2247	3142	4400	3523
1	NT Parkway - MS Hwy 25 to US Hwy 72 in Alabama	4232	17.58	510	970	1164	1021	3273	6224	7469	6551
1	NT Parkway - US Hwy 72 in Alabama to Colbert Park Road	4233	6.94	670	529	930	927	1697	1340	2356	2348
1	NT Parkway - Colbert Park Road to Alabama Hwy 20	4242	8.88	670	318	830	1089	2172	1031	2690	3530
1	NT Parkway - Alabama Hwy 20 to Tennessee Hwy 13	4234	14.42	670	489	1014	889	3526	2574	5337	4679
1	NT Parkway - Tennessee Hwy 13 to US Hwy 64	42070	19.16	685	954	1135	1014	4790	6672	7938	7091
1	NT Parkway - US Hwy 64 to Tennessee Hwy 20	4236	15.87	750	206	659	837	4344	1193	3817	4848
1	NT Parkway - Tennessee Hwy 20 to US Hwy 412	4238	5.23	480	249	851	567	916	475	1625	1082
1	NT Parkway - US Hwy 412 to Tennessee Hwy 50	4235	16.79	210	139	625	423	1287	852	3830	2592
1	NT Parkway - Tennessee Hwy 50 to Tennessee Hwy 7 at Fly	4239	10.2	210	156	641	659	782	581	2386	2453
1	NT Parkway - Tennessee Hwy 7 at Fly to Tennessee Hwy 46	4240	16.3	210	152	360	518	1249	904	2142	3082
1	NT Parkway - Tennessee Hwy 46 to Tennessee Hwy 100	42080	15.6	210	152	360	408	1196	865	2050	2323
VMT SUMMARY								163146	166737	232021	186065

Note: AADT -- Annual Average Daily Traffic
VMT-- Vehicle Miles of Travel

NATCHEZ TRACE PARKWAY

2003 TRAFFIC VOLUME SUMMARY

Sta. ID.	STATION LOCATION	BEGIN DATE	24 HR. VOL.	SEAS. FACT.	ANN. FACT.	SADT	AADT	REF. STA.
42010	NT Parkway - MS Hwy 467 to Interstate Hwy 20					760	752	Self
42020	NT Parkway - Interstate Hwy 55 to Airport Road					5893	5840	Self
42030	NT Parkway - MS Hwy 16 to MS Hwy 35					875	843	Self
42060	NT Parkway - US Hwy 45 to MS Hwy 363					2949	2888	Self
42080	NT Parkway - Tennessee Hwy 46 to Tennessee Hwy 100					452	408	Self
42041	NT Parkway - US Hwy 82 to MS Hwy 15	10/21/03	1120	0.988701	0.953013	1107	1067	42030
42042	NT Parkway - MS Hwy 9 to US Hwy 82	10/21/03	682	0.988701	0.953013	674	650	42030
42050	NT Parkway - MS Hwy 41 to Tupelo Cliff Gookin Blvd	10/21/03	4204	1.013054	0.991984	4259	4170	42060
42070	NT Parkway - Tennessee Hwy 13 to US Hwy 64	10/21/03	1022	1.013054	0.991984	1035	1014	42060
4211	NT Parkway - US 61 near Natchez to MS Hwy 553	10/21/03	1389	0.900474	0.890897	1251	1237	42010
4212	NT Parkway - MS Hwy 553 to US 61 near Port Gibson	10/21/03	715	0.900474	0.890897	644	637	42010
4213	NT Parkway - US 61 near Port Gibson to MS Hwy 18	10/21/03	556	0.900474	0.890897	501	495	42010
4214	NT Parkway - MS Hwy 18 to Utica Road	10/21/03	392	0.900474	0.890897	353	349	42010
4215	NT Parkway - Utica Road to MS Hwy 27	10/21/03	518	0.900474	0.890897	466	461	42010
4216	NT Parkway - MS Hwy 27 to MS Hwy 467	10/21/03	470	0.900474	0.890897	423	419	42010
4217	NT Parkway - Airport Road to MS Hwy 43	10/21/03	2185	0.896819	0.888779	1960	1942	42020
4218	NT Parkway - Ratliff Ferry Road MS Hwy 16	10/21/03	1178	0.988701	0.953013	1165	1123	42030
4220	NT Parkway - MS Hwy 35 to MS Hwy 12	10/21/03	1217	0.988701	0.953013	1203	1160	42030
4221	NT Parkway - MS Hwy 12 to MS Hwy 413	10/21/03	1090	0.988701	0.953013	1078	1039	42030
4222	NT Parkway - MS Hwy 413 to MS Hwy 9	10/21/03	802	0.988701	0.953013	793	764	42030
4223	NT Parkway - MS Hwy 15 to MS Hwy 46	10/21/03	1040	0.988701	0.953013	1028	991	42030
4224	NT Parkway - MS Hwy 46 to MS Hwy 8	10/21/03	1135	0.988701	0.953013	1122	1082	42030
4225	NT Parkway - MS Hwy 8 to MS Hwy 32	10/21/03	1512	0.988701	0.953013	1495	1441	42030
4226	NT Parkway - MS Hwy 32 to MS Hwy 41	10/21/03	3047	0.988701	0.953013	3013	2904	42030
4227	NT Parkway - Tupelo Cliff Gookin Blvd to MS Hwy 6	10/21/03	4984	1.013054	0.991984	5049	4944	42060
4228	NT Parkway - MS Hwy 6 to US Hwy 45	10/21/03	7818	1.013054	0.991984	7920	7755	42060
4229	NT Parkway - MS Hwy 363 to MS Hwy 371	10/21/03	1931	1.013054	0.991984	1956	1916	42060
4230	NT Parkway - MS Hwy 371 to MS Hwy 4	10/21/03	1530	1.013054	0.991984	1550	1518	42060
4231	NT Parkway - MS Hwy 4 to MS Hwy 25	10/21/03	980	1.013054	0.991984	993	972	42060
4232	NT Parkway - MS Hwy 25 to US Hwy 72 in Alabama	10/21/03	1029	1.013054	0.991984	1042	1021	42060
4233	NT Parkway - US Hwy 72 in Alabama to Colbert Park Road	10/21/03	934	1.013054	0.991984	946	927	42060
4234	NT Parkway - Alabama Hwy 20 to Tennessee Hwy 13	10/21/03	896	1.013054	0.991984	908	889	42060
4235	NT Parkway - US Hwy 412 to Tennessee Hwy 50	10/21/03	426	1.013054	0.991984	432	423	42060
4236	NT Parkway - US Hwy 64 to Tennessee Hwy 20	10/21/03	844	1.013054	0.991984	855	837	42060
4238	NT Parkway - Tennessee Hwy 20 to US Hwy 412	10/21/03	572	1.013054	0.991984	579	567	42060
4239	NT Parkway - Tennessee Hwy 50 to Tennessee Hwy 7 at Fly	10/21/03	664	1.013054	0.991984	673	659	42060
4240	NT Parkway - Tennessee Hwy 7 at Fly to Tennessee Hwy 46	10/21/03	522	1.013054	0.991984	529	518	42060
4241	NT Parkway - MS Hwy 43 to Ratliff Ferry Road	10/21/03	1474	0.988701	0.953013	1457	1405	42030
4242	NT Parkway - Colbert Park Road to Alabama Hwy 20	10/21/03	1098	1.013054	0.991984	1112	1089	42060

Note: AADT -- Annual Average Daily Traffic
 SADT -- Seasonal Average Daily Traffic computed using data for the months containing 80% of annual volume.
 REF. STA. -- a permanent Automated Traffic Recorder (ATR) reference station used to obtain seasonal and annual adjustment factors for coverage counts.

NATCHEZ TRACE PARKWAY

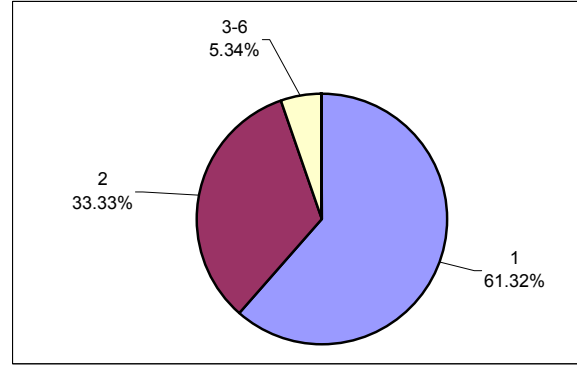
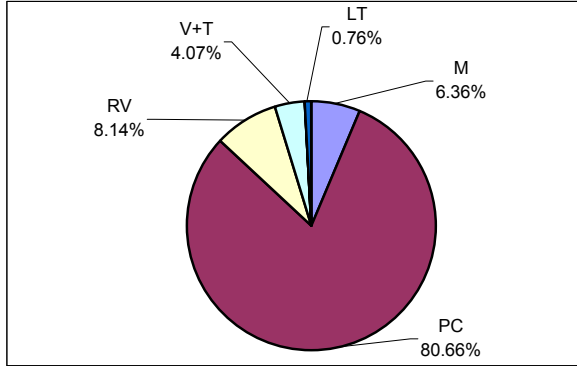
2003 TRAFFIC COMPOSITION SUMMARY

Vehicle Classification

Vehicle Occupancy

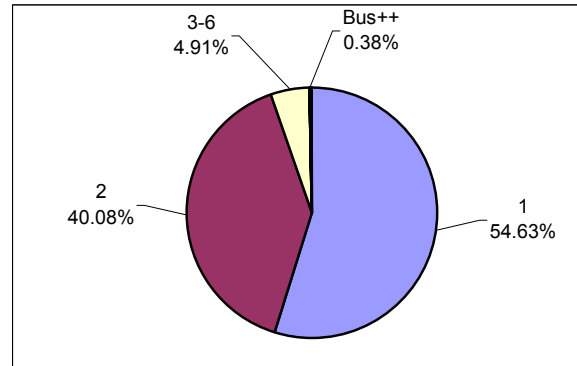
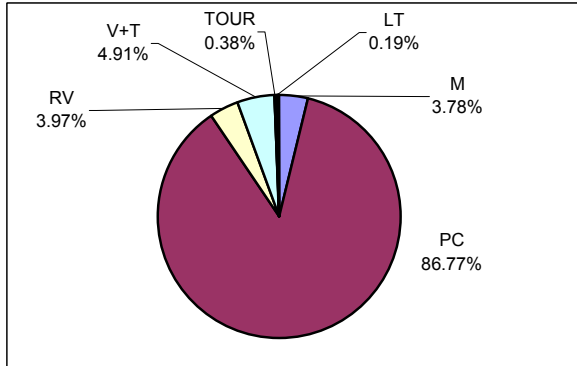
Location: STATION 42042

Location: STATION 42042



Location: STATION 42070

Location: STATION 42070



CLASSIFICATION LEGEND:

OCCUPANCY LEGEND:

No.	Vehicle Type	FHWA Class
M	Motorcycles	Class 1
PC	Passenger Cars	Class 2
RV	Recreational Vehicles	N/A
V+T	Vehicles/RV pulling Trailer	N/A
BUS	Transit/Shuttle Buses	Class 4
TOUR	Tour Buses	Class 4
LT	Light-duty Trucks	Classes 3, 5
HT	Heavy-duty Trucks	Classes 6 - 13

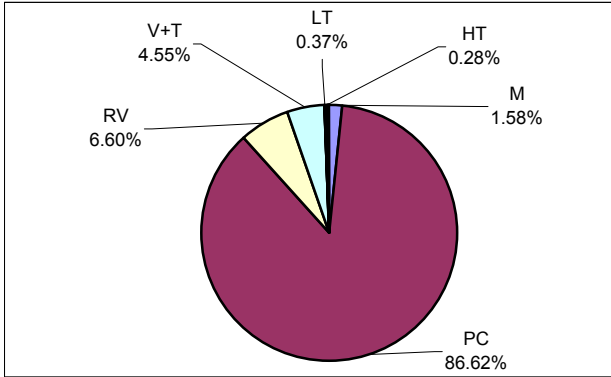
No.	Vehicle Occupancy
1	1 Occupant
2	2 Occupants
3-6	3-6 Occupants (car load)
6+	More than 6 Occupants, (non-Bus)
Bus 0	Bus, No Passengers
Bus +	Bus, Few Passengers
Bus++	Bus, Semi-Loaded
Bus Full	Bus, Fully Loaded

Note: Vehicle Classifications and Vehicle Occupancy values represented by 0% (No Occurrence) are not shown on the charts.

NATCHEZ TRACE PARKWAY

Vehicle Classification

Location: STATION 42060



CLASSIFICATION LEGEND:

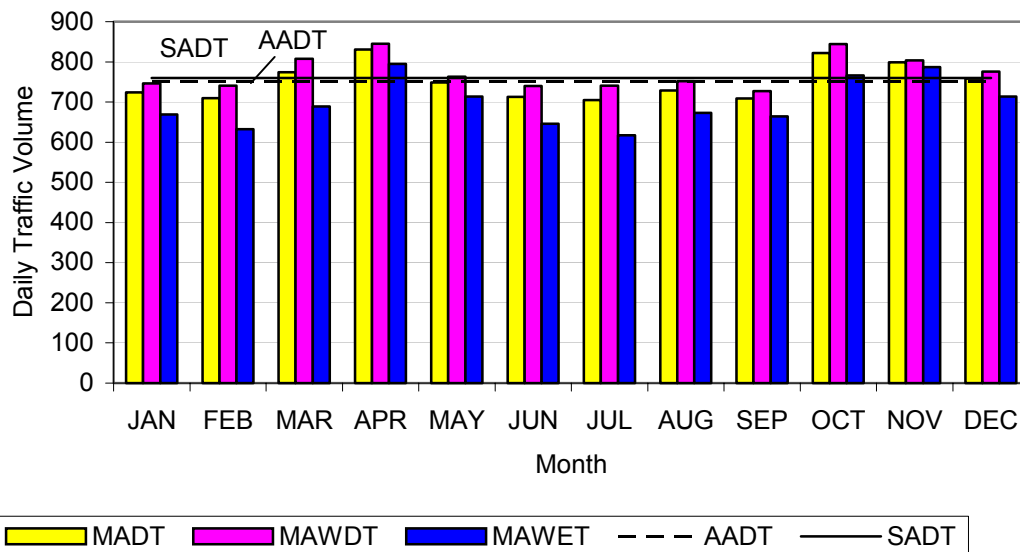
No.	Vehicle Type	FHWA Class
M	Motorcycle	Class 1
PC	Passenger Vehicles	Class 2
RV	Recreational Vehicles (RVs)	N/A
V+T	Vehicles pulling trailers or RVs	N/A
BUS	Transit Buses	Class 4
TOUR	Tour Buses	Class 4
LT	Light-duty Trucks	Classes 3, 5
HT	Heavy-duty Trucks	Classes 6 - 13

Note: Vehicle and occupancy classes represented by 0% vehicles are not shown on the charts.

NATCHEZ TRACE PARKWAY

Station: 42010 NT Parkway - MS Hwy 467 to Interstate Hwy 20

Month	Year	Average Day of Month (MADT)	Average Weekday of Month (MAWDT)	Average Weekend Day of Month (MAWET)	Annual Average Daily Traffic Factor (AADTF)	Seasonal Average Daily Traffic Factor (SADTF)
1	2002	724	746	669	1.0079	1.0188
2	2002	710	741	632	1.0147	1.0256
3	2002	774	808	689	0.9306	0.9406
4	2001	831	845	795	0.8898	0.8994
5	2001	749	763	714	0.9855	0.9961
6	2001	713	740	646	1.0161	1.0270
7	2001	705	741	617	1.0147	1.0256
8	2001	729	752	673	0.9999	1.0106
9	2001	709	727	664	1.0343	1.0454
10	2001	822	844	766	0.8909	0.9005
11	2001	799	804	787	0.9352	0.9453
12	2001	758	776	714	0.9690	0.9794
Annual Average Daily Traffic (AADT)				752		
Annual Average Weekday Traffic (AAWDT)				774		
Annual Average Weekend Traffic (AAWET)				697		
Seasonal Average Daily Traffic (SADT)				760		

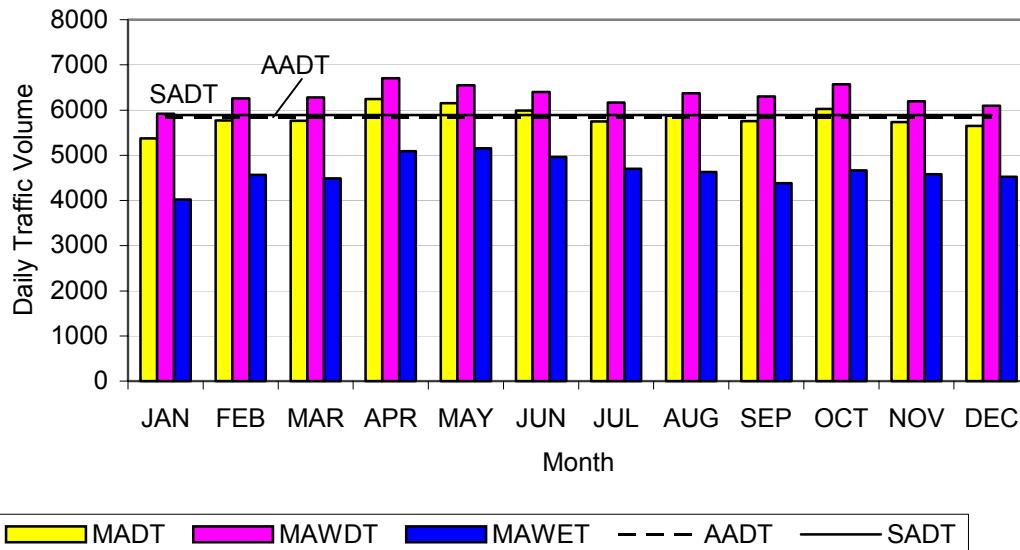


Note: AADTF is used to adjust coverage traffic volumes to AADT volume.
 SADTF is used to adjust coverage traffic volumes to SADT volume.
 SADT -- Seasonal Average Daily Traffic for the months containing 80% of annual volume.

NATCHEZ TRACE PARKWAY

Station: 42020 NT Parkway - Interstate Hwy 55 to Airport Road

Month	Year	Average Day of Month (MADT)	Average Weekday of Month (MAWDT)	Average Weekend Day of Month (MAWET)	Annual Average Daily Traffic Factor (AADTF)	Seasonal Average Daily Traffic Factor (SADTF)
1	2002	5375	5917	4018	0.9870	0.9959
2	2002	5773	6256	4563	0.9335	0.9420
3	2002	5766	6277	4488	0.9304	0.9388
4	2001	6241	6702	5090	0.8714	0.8793
5	2001	6151	6551	5151	0.8915	0.8996
6	2001	5992	6403	4965	0.9121	0.9203
7	2001	5749	6168	4701	0.9468	0.9554
8	2001	5873	6371	4629	0.9167	0.9250
9	2001	5754	6303	4380	0.9266	0.9350
10	2001	6026	6571	4664	0.8888	0.8968
11	2001	5732	6192	4581	0.9432	0.9517
12	2001	5650	6099	4526	0.9576	0.9662
Annual Average Daily Traffic (AADT)				5840		
Annual Average Weekday Traffic (AAWDT)				6318		
Annual Average Weekend Traffic (AAWET)				4646		
Seasonal Average Daily Traffic (SADT)				5893		

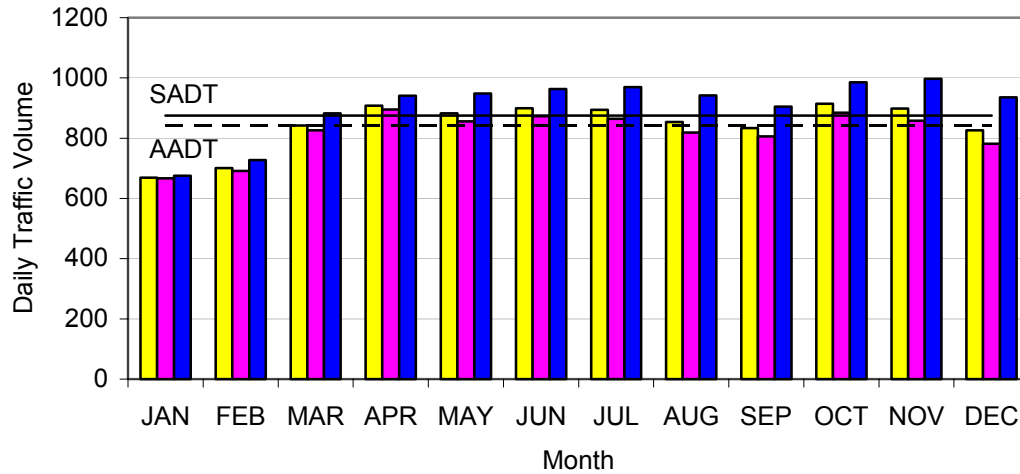


Note: AADTF is used to adjust coverage traffic volumes to AADT volume.
 SADTF is used to adjust coverage traffic volumes to SADT volume.
 SADT -- Seasonal Average Daily Traffic for the months containing 80% of annual volume.

NATCHEZ TRACE PARKWAY

Station: 42030 NT Parkway - MS Hwy 16 to MS Hwy 35

Month	Year	Average Day of Month (MADT)	Average Weekday of Month (MAWDT)	Average Weekend Day of Month (MAWET)	Annual Average Daily Traffic Factor (AADTF)	Seasonal Average Daily Traffic Factor (SADTF)
1	2003	669	667	675	1.2645	1.3118
2	2003	701	691	727	1.2206	1.2663
3	2003	842	826	882	1.0211	1.0593
4	2003	908	895	941	0.9424	0.9777
5	2003	882	856	948	0.9853	1.0222
6	2003	899	873	963	0.9661	1.0023
7	2003	894	864	970	0.9762	1.0127
8	2003	854	819	942	1.0298	1.0684
9	2003	834	806	905	1.0464	1.0856
10	2003	914	885	986	0.9530	0.9887
11	2002	898	858	997	0.9830	1.0198
12	2002	826	782	936	1.0785	1.1189
Annual Average Daily Traffic (AADT)				843		
Annual Average Weekday Traffic (AAWDT)				819		
Annual Average Weekend Traffic (AAWET)				906		
Seasonal Average Daily Traffic (SADT)				875		

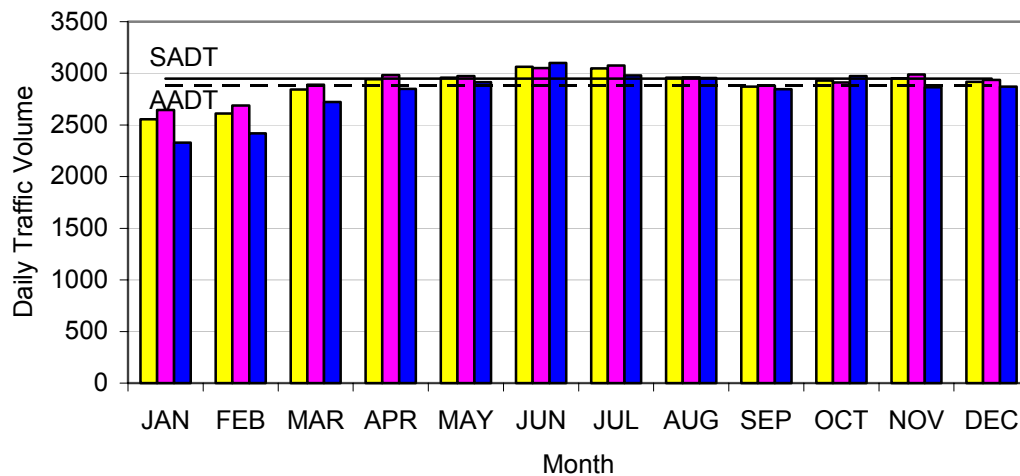


Note: AADTF is used to adjust coverage traffic volumes to AADT volume.
 SADTF is used to adjust coverage traffic volumes to SADT volume.
 SADT -- Seasonal Average Daily Traffic for the months containing 80% of annual volume.

NATCHEZ TRACE PARKWAY

Station: 42060 NT Parkway - US Hwy 45 to MS Hwy 363

Month	Year	Average Day of Month (MADT)	Average Weekday of Month (MAWDT)	Average Weekend Day of Month (MAWET)	Annual Average Daily Traffic Factor (AADTF)	Seasonal Average Daily Traffic Factor (SADTF)
1	2003	2555	2645	2330	1.0917	1.1149
2	2003	2611	2688	2418	1.0743	1.0971
3	2003	2842	2890	2722	0.9992	1.0204
4	2003	2944	2982	2849	0.9684	0.9889
5	2003	2957	2973	2916	0.9713	0.9919
6	2003	3064	3050	3099	0.9468	0.9669
7	2003	3049	3076	2981	0.9388	0.9587
8	2003	2959	2962	2954	0.9749	0.9956
9	2003	2871	2881	2845	1.0023	1.0236
10	2003	2929	2911	2975	0.9920	1.0131
11	2002	2953	2988	2866	0.9664	0.9869
12	2002	2918	2936	2871	0.9835	1.0044
Annual Average Daily Traffic (AADT)				2888		
Annual Average Weekday Traffic (AAWDT)				2915		
Annual Average Weekend Traffic (AAWET)				2819		
Seasonal Average Daily Traffic (SADT)				2949		

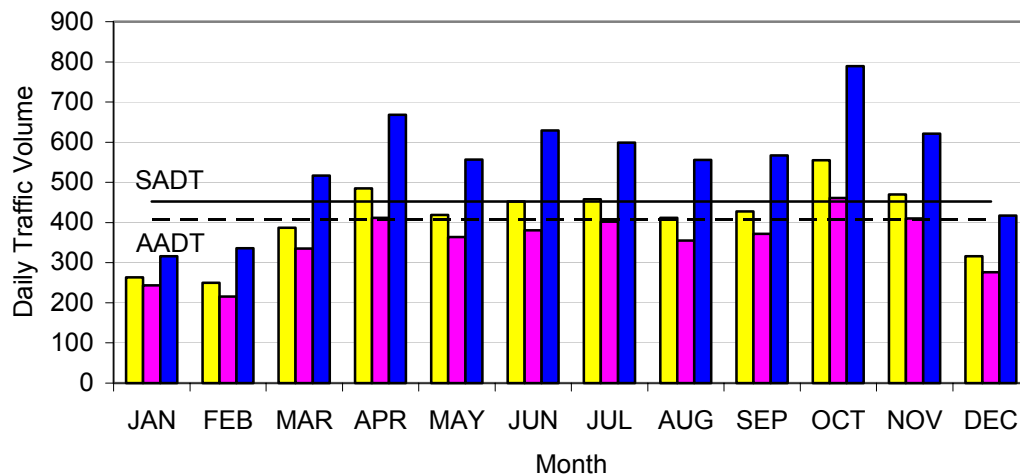


Note: AADTF is used to adjust coverage traffic volumes to AADT volume.
 SADTF is used to adjust coverage traffic volumes to SADT volume.
 SADT -- Seasonal Average Daily Traffic for the months containing 80% of annual volume.

NATCHEZ TRACE PARKWAY

Station: 42080 NT Parkway - Tennessee Hwy 46 to Tennessee Hwy 100

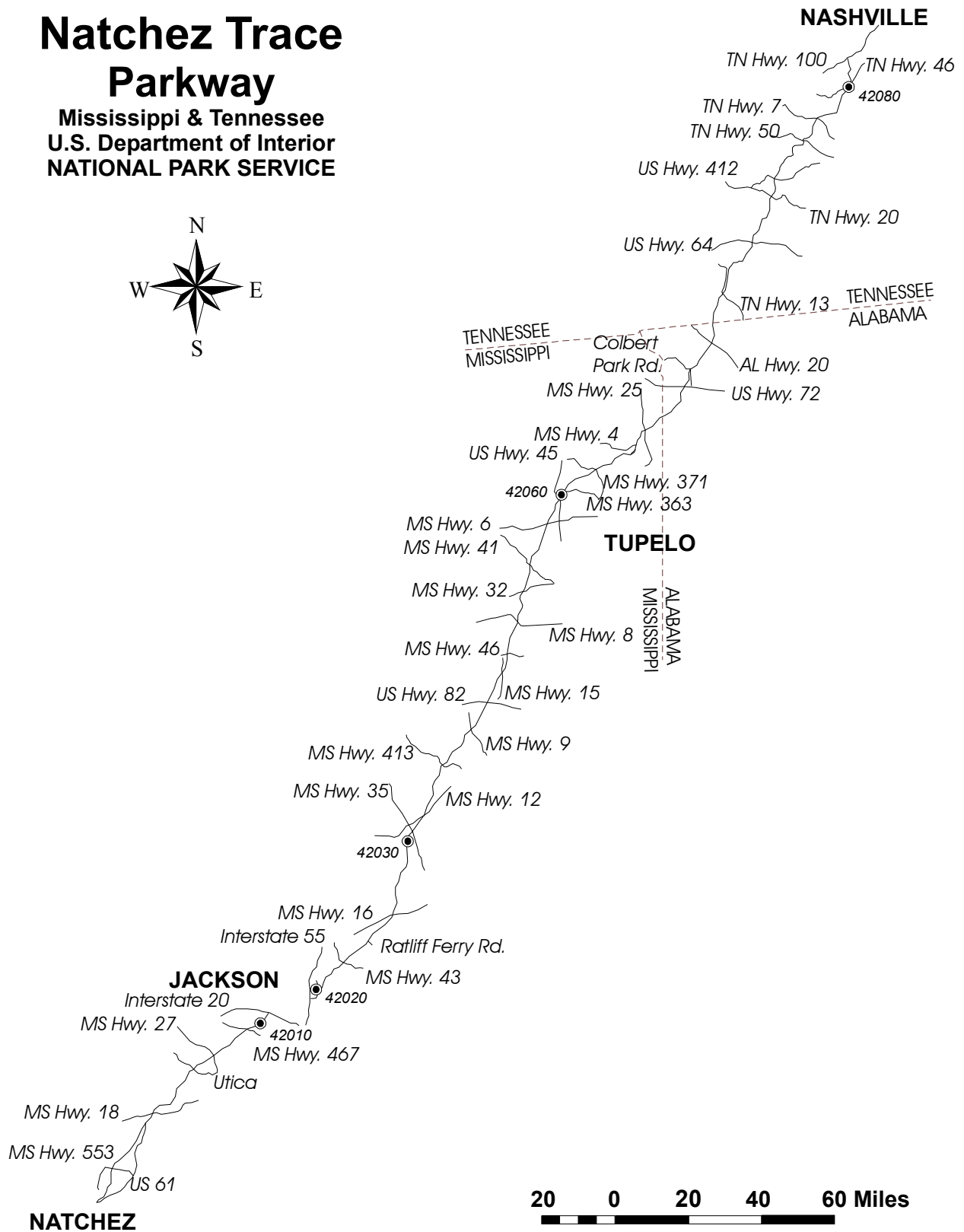
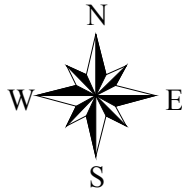
Month	Year	Average Day of Month (MADT)	Average Weekday of Month (MAWDT)	Average Weekend Day of Month (MAWET)	Annual Average Daily Traffic Factor (AADTF)	Seasonal Average Daily Traffic Factor (SADTF)
1	2003	264	244	316	1.6721	1.8525
2	2003	250	216	336	1.8889	2.0926
3	2003	387	335	517	1.2179	1.3493
4	2003	485	412	668	0.9903	1.0971
5	2003	419	364	557	1.1209	1.2418
6	2003	452	381	629	1.0709	1.1864
7	2003	458	402	599	1.0149	1.1244
8	2003	412	355	556	1.1493	1.2732
9	2003	428	372	567	1.0968	1.2151
10	2003	555	461	789	0.8850	0.9805
11	2002	470	410	621	0.9951	1.1024
12	2002	316	276	417	1.4783	1.6377
Annual Average Daily Traffic (AADT)				408		
Annual Average Weekday Traffic (AAWDT)				352		
Annual Average Weekend Traffic (AAWET)				548		
Seasonal Average Daily Traffic (SADT)				452		

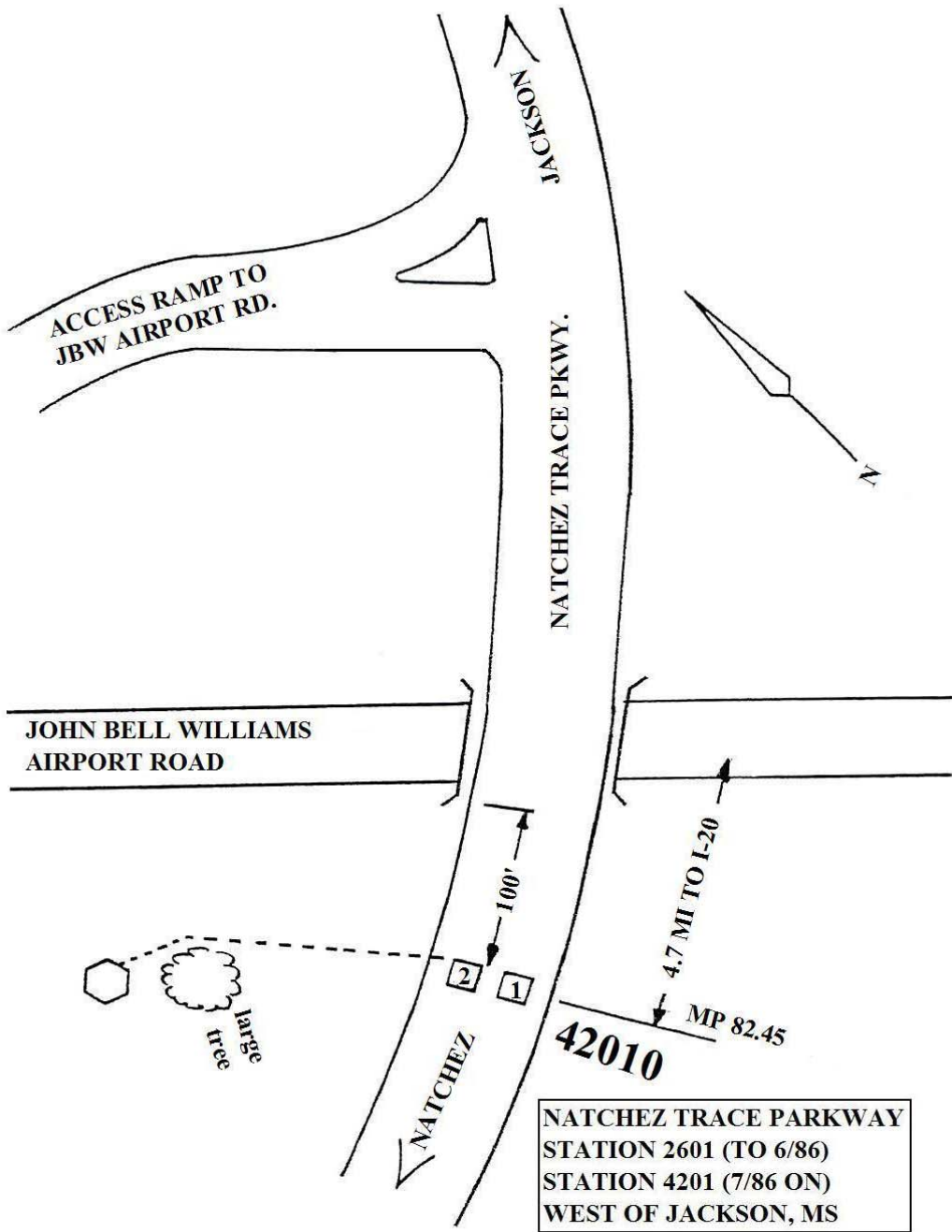


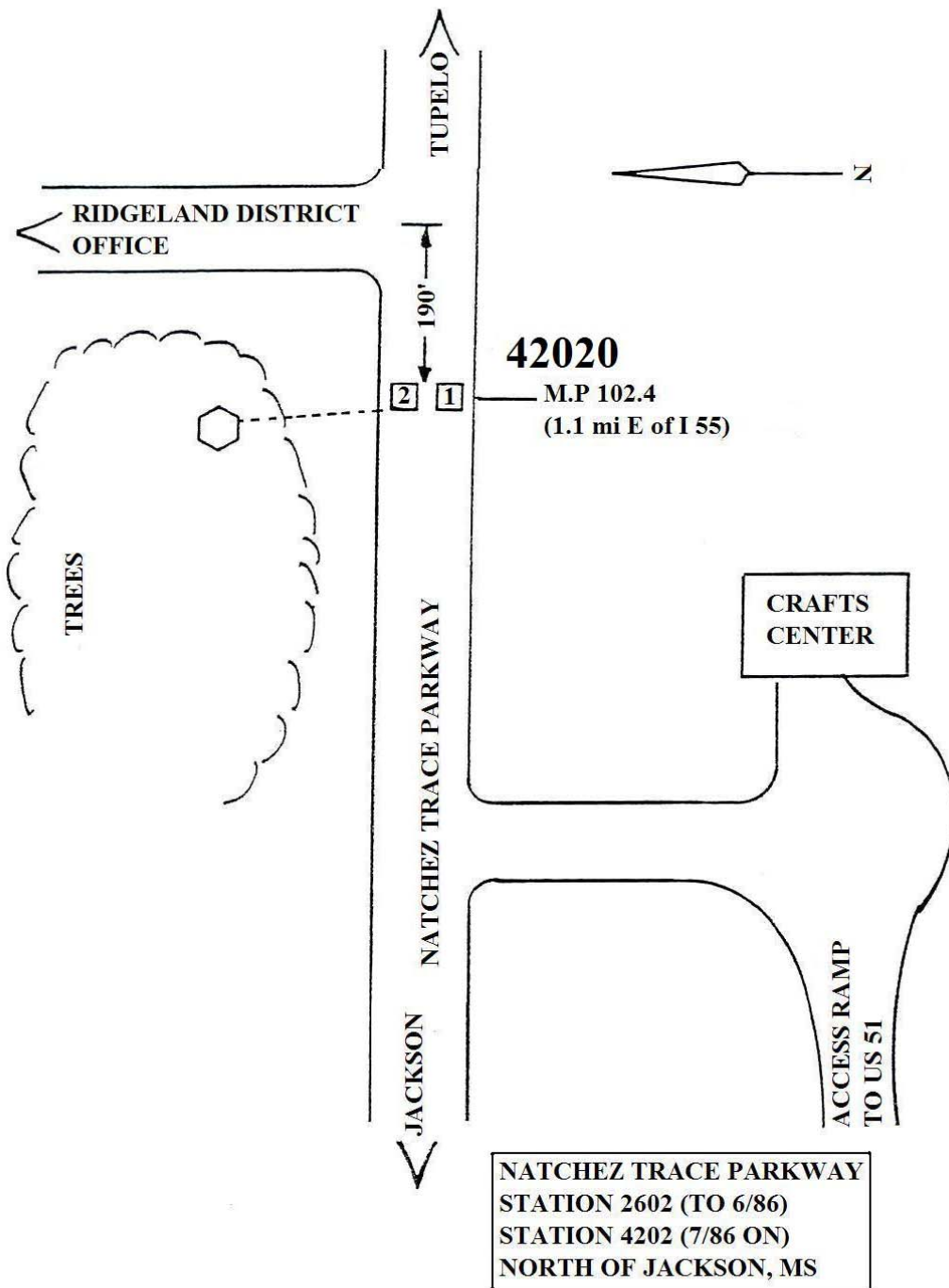
Note: AADTF is used to adjust coverage traffic volumes to AADT volume.
 SADTF is used to adjust coverage traffic volumes to SADT volume.
 SADT -- Seasonal Average Daily Traffic for the months containing 80% of annual volume.

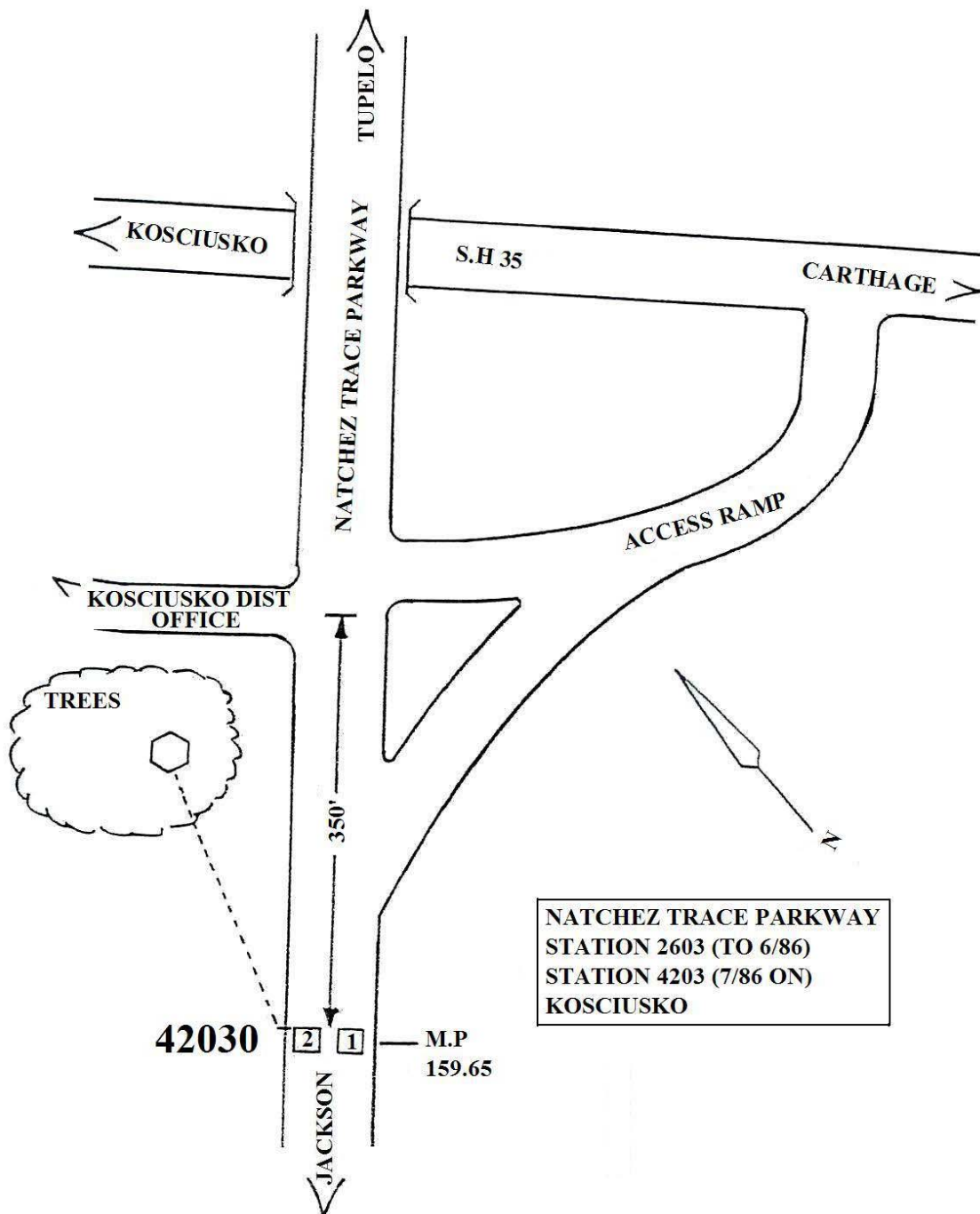
Natchez Trace Parkway

Mississippi & Tennessee
U.S. Department of Interior
NATIONAL PARK SERVICE

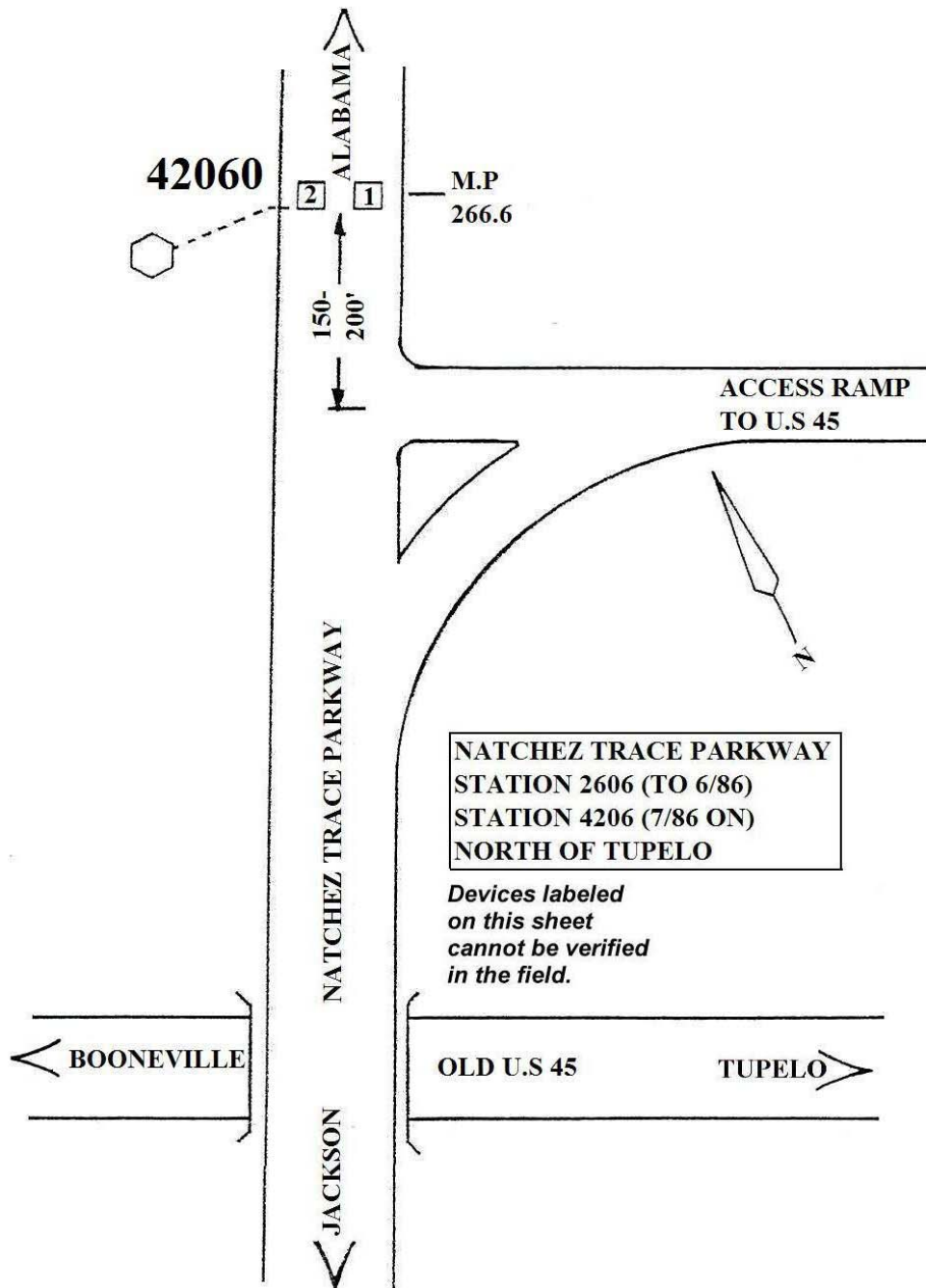


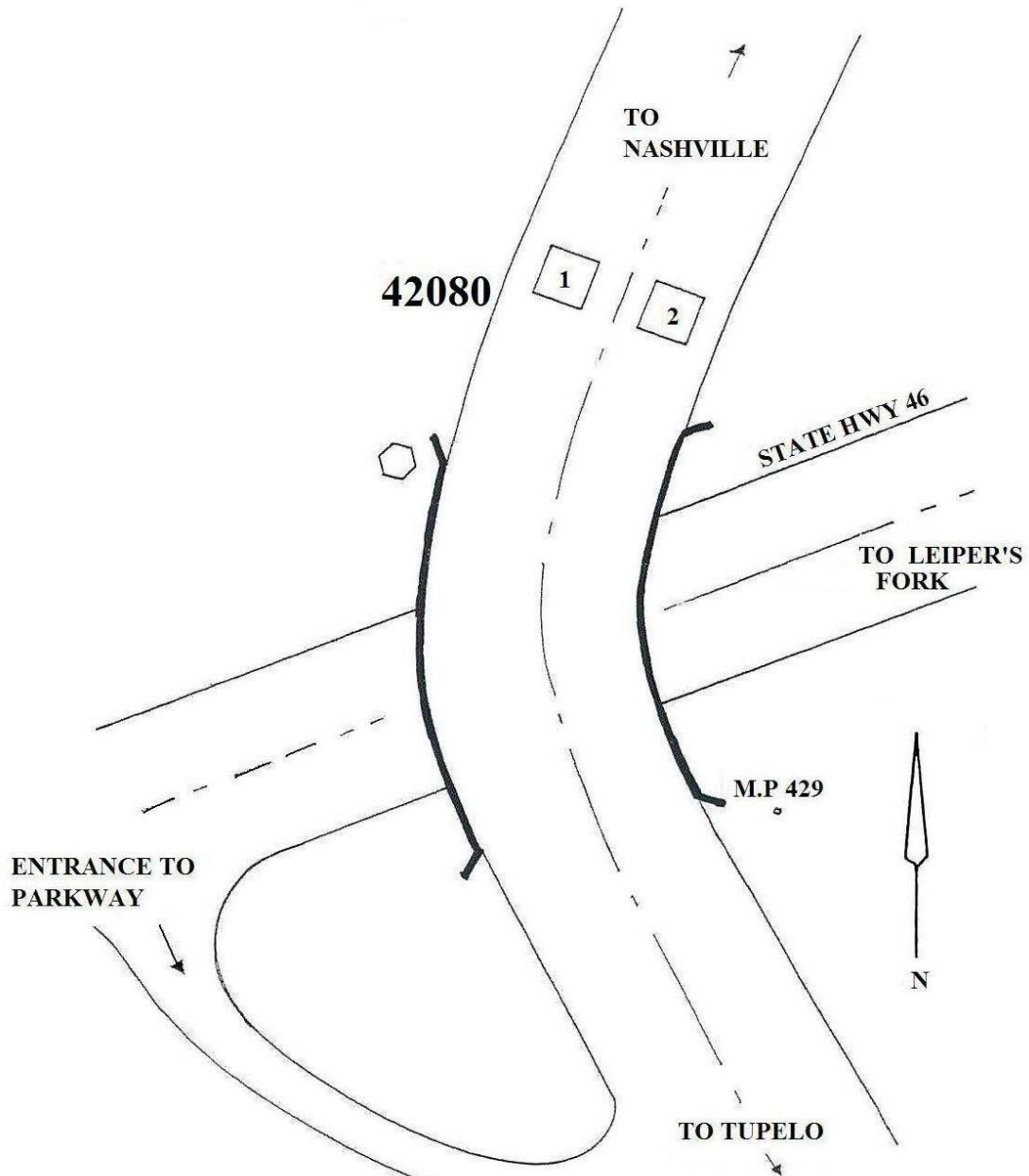






42030





**NATCHEZ TRACE PARKWAY
STATION 4208
LEIPER'S FORK**

*Devices labeled
on this sheet
cannot be verified
in the field.*