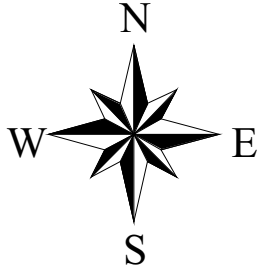


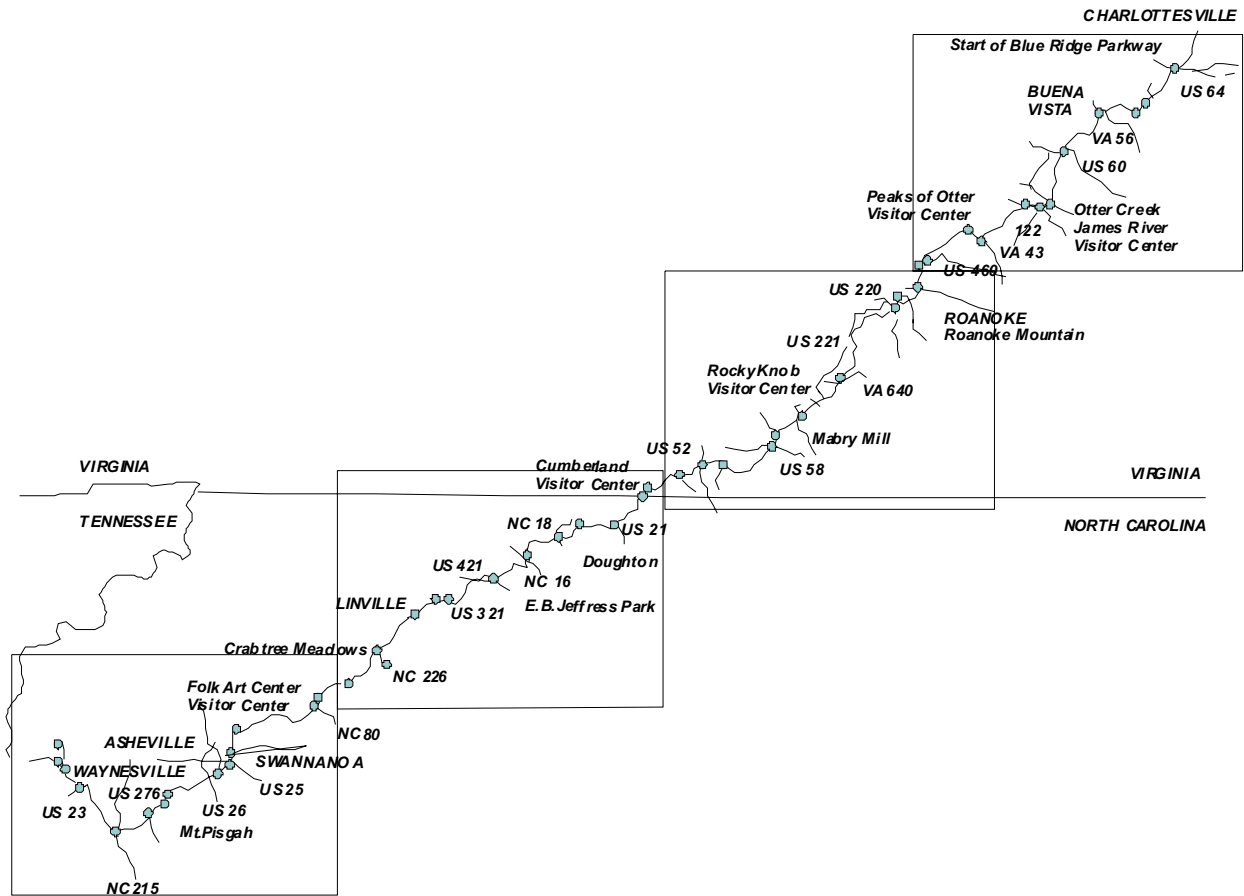
Blue Ridge Parkway Traffic Package



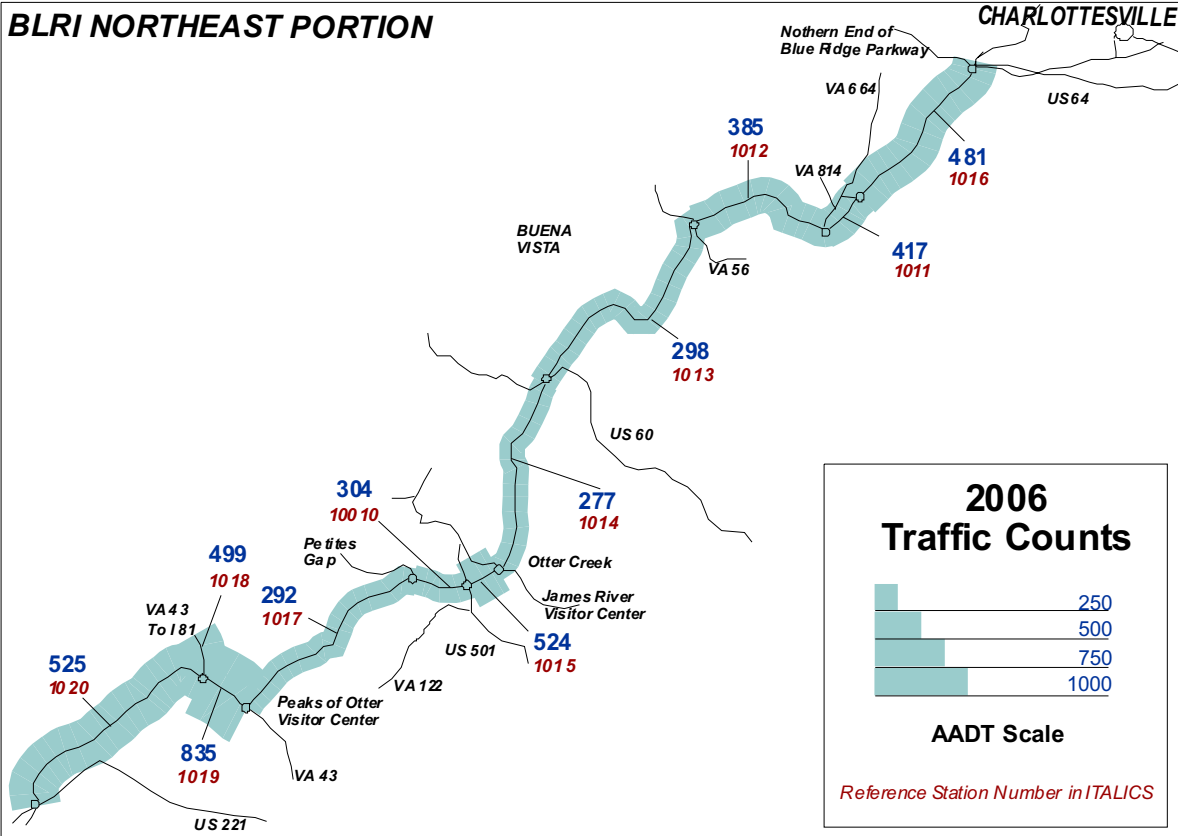


Blue Ridge Parkway

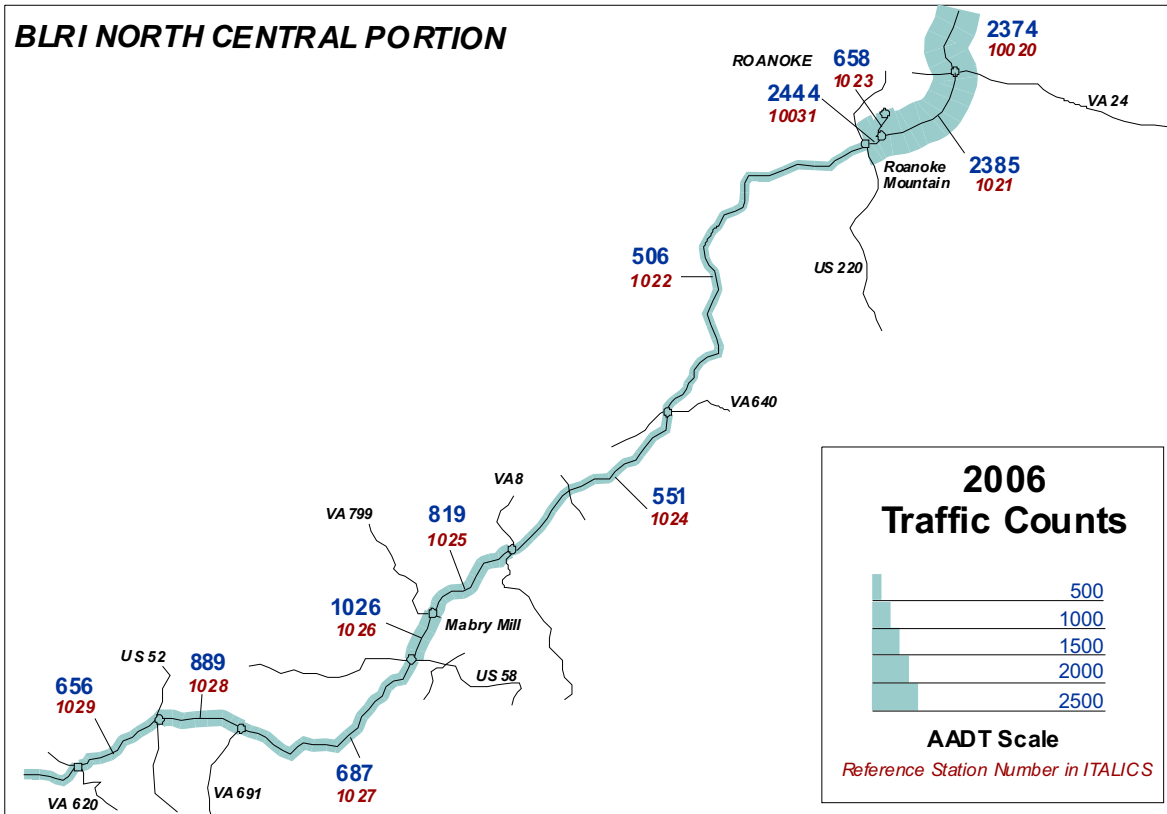
North Carolina and Virginia
U.S. Department of Interior
NATIONAL PARK SERVICE

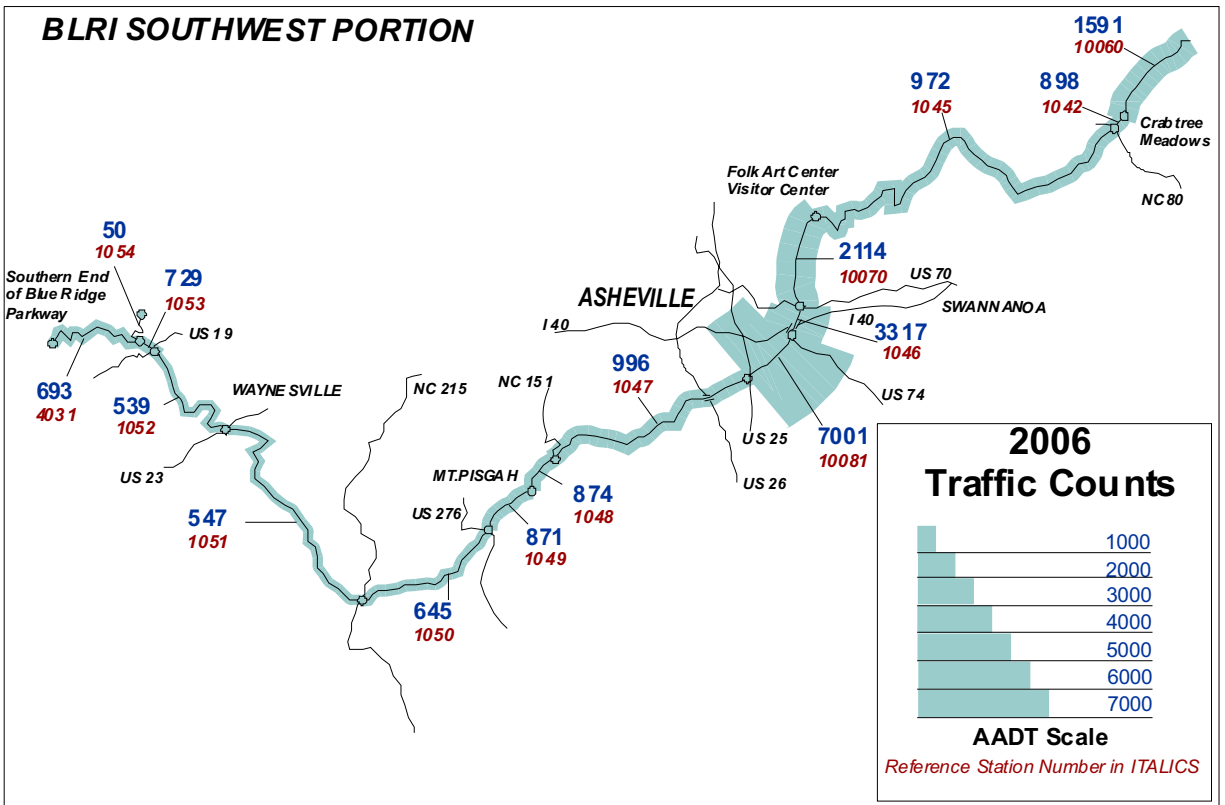
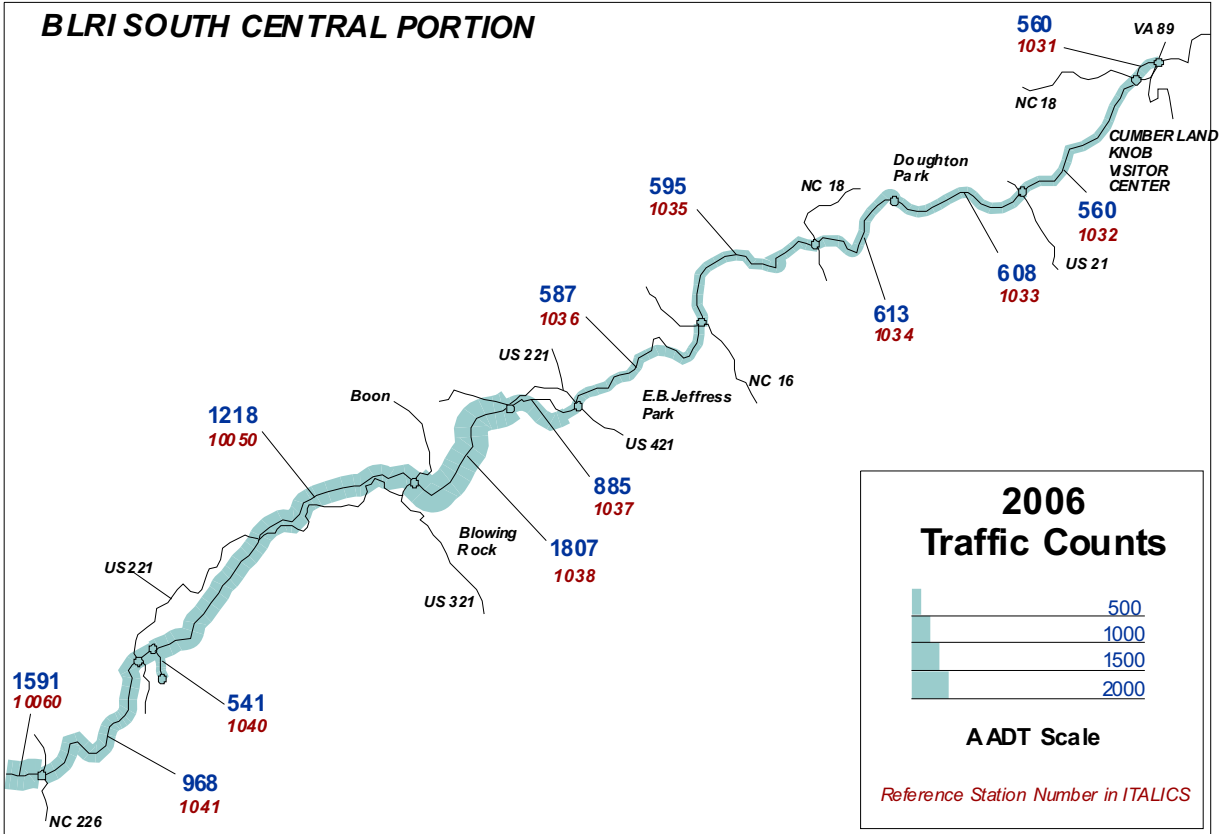


BLRI NORTHEAST PORTION



BLRI NORTH CENTRAL PORTION





National Park Service Traffic Count Program

BLUE RIDGE PARKWAY

TRAFFIC TRENDS SUMMARY

Rt. No.	Roadway Segment	Sta. ID.	Length	AADT				VMT(1000's)			
				1988	1991	1994	2006	1988	1991	1994	2006
1	B.R.Parkway - Interstate Rt 64 to Va. Hwy. 664	1016	13.64	1000	477	759	481	4979	2375	3779	2395
1	B.R.Parkway - Va. Hwy. 664 to Va. Hwy. 814	1011	4.96	1000	448	504	417	1810	811	912	755
1	B.R.Parkway - Va. Hwy. 814 to Va. Hwy. 56	1012	8.51	1000	414	410	385	3106	1286	1274	1196
1	B.R.Parkway - Va. Hwy. 56 to U.S. Hwy. 60	1013	18.39	1000	445	448	298	6712	2987	3007	2000
1	B.R.Parkway - U.S. Hwy. 60 to Otter Creek	1014	15.48	1000	386	318	277	5650	2181	1797	1565
1	B.R.Parkway - Otter Creek to U.S. Hwy. 501	1015	3.03	1000	749	980	524	1106	828	1084	580
1	B.R.Parkway - U.S. Hwy. 501 to Petites Gap	10010	7.02	1000	333	354	304	2562	853	907	779
1	B.R.Parkway - Petites Gap to No. Jct. Va. Hwy. 43	1017	14.83	1000	658	566	292	5413	3562	3064	1581
1	B.R.Parkway - No. Jct. Va. Hwy. 43 to So. Jct. Va. Hwy. 43	1019	4.97	1000	738	698	835	1814	1339	1266	1515
1	B.R.Parkway - So. Jct. Va. Hwy. 43 to U.S. Hwy. 221/460	1020	15.1	1000	638	519	525	5512	3516	2860	2894
1	B.R.Parkway - U.S. Hwy. 221/460 to Va.Hwy.24	10020	6.23	1000	1840	1624	2374	2274	4184	3693	5398
1	B.R.Parkway - Va.Hwy.24 to Mill Mountain Road	1021	8.09	1000	1643	2056	2385	2953	4852	6071	7043
1	B.R.Parkway - Mill Mountain Road to U.S.Hwy.220	10031	0.9	1000	1935	2148	2444	329	636	706	803
1	B.R.Parkway - U.S.Hwy.220 to Va.Hwy.640	1022	29.24	1000	1041	903	506	10673	11110	9637	5400
1	B.R.Parkway - Va.Hwy.640 to Va. Hwy.8.	1024	14.66	1000	576	467	551	5351	3082	2499	2948
1	B.R.Parkway - Va.Hwy. 8 to Va. Hwy.799.	1025	9.07	1000	524	1125	819	3311	1735	3724	2711
1	B.R.Parkway - Va.Hwy. 799 to U.S. Hwy.58	1026	3.4	1000	643	1307	1026	1241	798	1622	1273
1	B.R.Parkway - U.S.Hwy 58 to V.A. Hwy.691	1027	15.58	1000	594	460	687	5687	3378	2616	3907
1	B.R.Parkway - V.A. Hwy.691 to U.S.Hwy 52	1028	6.21	1000	842	1700	889	2267	1909	3853	2015
1	B.R.Parkway - U.S.Hwy 52 to V.A. Hwy. 89	1029	16.47	1000	753	1052	656	6012	4527	6324	3944
1	B.R.Parkway - V.A. Hwy. 89 to No. Jct. N.C. Hwy 18.	1031	1.39	1000	673	725	560	507	341	368	284
1	B.R.Parkway - No. Jct. N.C. Hwy 18. to U.S.Hwy.21	1032	12.37	1000	544	797	560	4515	2456	3598	2528
1	B.R.Parkway - U.S.Hwy.21 to Doughton Park	1033	11.47	1000	627	453	608	4187	2625	1897	2545
1	B.R.Parkway - Doughton Park to So. Jct. N.C. Hwy. 18	1034	6.95	1000	500	870	613	2537	1268	2207	1555
1	B.R.Parkway - So. Jct. N.C. Hwy. 18 to N.C. Hwy. 16	1035	13.21	1000	489	721	595	4822	2358	3476	2869
1	B.R.Parkway - N.C. Hwy. 16 to U.S.Hwy 421	1036	15.21	1000	457	819	587	5552	2537	4547	3259
1	B.R.Parkway - U.S.Hwy 421 to U.S.Hwy. 221/421 Conn.	1037	4.21	1000	554	1638	885	1537	851	2517	1360
1	B.R.Parkway - U.S.Hwy. 221/421 Conn. to U.S.Hwy 321	1038	10.97	1000	890	1403	1807	4004	3564	5618	7235
1	B.R. Parkway - U.S.Hwy 321 to U.S.Hwy 221	10050*	25.79	1000	1278	1358	1218	9413	12030	12783	11465
1	B.R. Parkway - U.S.Hwy 221 to N.C.Hwy 226	1041	13.37	1000	765	953	968	4880	3733	4651	4724
1	B.R. Parkway - N.C.Hwy 226 to Crabtree Meadows	10060	8.61	1000	1282	1363	1591	3143	4029	4283	5000
1	B.R. Parkway - Crabtree Meadows to N.C. Hwy. 80	1042	4.65	1000	599	661	898	1697	1017	1122	1524
1	B.R. Parkway - N.C. Hwy. 80 to Folk Art Center	1045	37.86	1000	866	1208	972	13819	11967	16693	13432
1	B.R. Parkway - Folk Art Center to U.S.Hwy.70	10070	0.58	1000	1497	1661	2114	212	317	352	448
1	B.R. Parkway - U.S.Hwy.70 to U.S.Hwy.74	1046	1.61	1000	2945	2313	3317	588	1731	1359	1949
1	B.R. Parkway - U.S.Hwy.74 to U.S.Hwy.25	10081	3.92	1000	4955	5681	7001	1431	7090	8128	10017
1	B.R. Parkway - U.S.Hwy.25 to N.C.Hwy.151	1047	18.88	1000	625	1157	996	6891	4307	7973	6864
1	B.R. Parkway - N.C.Hwy.151 to Mt.Pisgah.	1048	1.05	1000	681	1238	874	383	261	474	335
1	B.R. Parkway - Mt.Pisgah. to U.S. Hwy. 276	1049	3.12	1000	815	1250	871	1139	928	1424	992
1	B.R. Parkway - U.S. Hwy. 276 to N.C.Hwy.215	1050	11.54	1000	552	587	645	4212	2325	2473	2717
1	B.R. Parkway - N.C.Hwy.215 to U.S.Hwy.23	1051	19.76	1000	567	603	547	7212	4089	4349	3945
1	B.R. Parkway - U.S.Hwy.23 to U.S.Hwy.19	1052	12.8	1000	513	545	539	4672	2397	2546	2518
1	B.R. Parkway - U.S.Hwy.19 to Balsam Mountain Road.	1053	2.33	1000	712	757	729	850	606	644	620
1	B.R. Parkway - Balsam Mountain Road to U.S Hwy.441.	4031	11.72	1000	647	725	693	4278	2768	3101	2965
100	Balsam Mountain Road - B.R Parkway to Overlook	1054	8.86	1000	204	216	50	3234	660	699	162
138	Mill Mountain Road - B.R Parkway to Park Boundary	1023	2.32	1000	587	725	658	847	497	614	557
151	Va.Hwy.43 - B.R.Parkway to Park Boundary	1018	1.08	1000	728	793	499	394	287	313	197
212	Linville Falls Road - B.R Parkway to End of Route	1040	1.47	1000	630	947	541	537	338	508	290

VMT SUMMARY 176,251 133,324 159,412 143,057

Note: AADT -- Annual Average Daily Traffic
VMT-- Vehicle Miles of Travel

* A section of the BLRI near Sims Creek Bridge (at MP 295.4 on the Parkway) was closed during the counts for the construction. U.S. Hwy 221 was used for detour. A counter was placed on the ramp that led to the detour.

National Park Service Traffic Count Program

BLUE RIDGE PARKWAY

2006 TRAFFIC VOLUME SUMMARY

Sta. ID.	STATION LOCATION	BEGIN DATE	24 HR. VOL.	SEAS. FACT.	ANN. FACT.	SADT	AADT	REF. STA.
10010	B.R.Parkway - U.S. Hwy. 501 to Petites Gap	10/24/06	504	0.8623	0.6040	435	304	10010
10020	B.R.Parkway - U.S. Hwy. 221/460 to Va.Hwy.24	10/24/06	2464	1.0424	0.9636	2568	2374	10020
10031	B.R.Parkway - Mill Mountain Road to U.S.Hwy.220	10/24/06	2900	0.9145	0.8428	2652	2444	10031
10032	RAMP FROM BLUE RIDGE PKWY TO U.S.220	10/24/06	1647	0.9040	0.8240	1489	1357	10032
10050*	B.R. Parkway - U.S.Hwy 321 to U.S.Hwy 221	10/24/06	1454	1.0689	0.8380	1554	1218	10050
10060	B.R. Parkway - N.C.Hwy 226 to Crabtree Meadows	10/24/06	2024	1.0840	0.7860	2194	1591	10060
10070	B.R. Parkway - Folk Art Center to U.S.Hwy.70	10/24/06	2828	0.9257	0.7475	2618	2114	10070
10081	B.R. Parkway - U.S.Hwy.74 to U.S.Hwy.25	10/24/06	6968	1.0294	1.0048	7173	7001	10081
10082	RAMP TO U.S 25 @ JCT U.S 25 & BLUE RIDGE PKWY	10/24/06	3881	1.1169	1.0731	4335	4165	10082
1011	B.R.Parkway - Va. Hwy. 664 to Va. Hwy. 814	10/24/06	691	0.8623	0.6040	596	417	10010
1012	B.R.Parkway - Va. Hwy. 814 to Va. Hwy. 56	10/24/06	637	0.8623	0.6040	549	385	10010
1013	B.R.Parkway - Va. Hwy. 56 to U.S. Hwy. 60	10/24/06	494	0.8623	0.6040	426	298	10010
1014	B.R.Parkway - U.S. Hwy. 60 to Otter Creek	10/24/06	458	0.8623	0.6040	395	277	10010
1015	B.R.Parkway - Otter Creek to U.S. Hwy. 501	10/24/06	868	0.8623	0.6040	748	524	10010
1016	B.R.Parkway - Interstate Rt 64 to Va. Hwy. 664	10/24/06	796	0.8623	0.6040	686	481	10010
1017	B.R.Parkway - Petites Gap to No. Jct. Va. Hwy. 43	10/24/06	484	0.8623	0.6040	417	292	10010
1018	Va.Hwy.43 - B.R.Parkway to Park Boundary	10/24/06	518	1.0424	0.9636	540	499	10020
1019	B.R.Parkway - No. Jct. Va. Hwy. 43 to So. Jct. Va. Hwy. 43	10/24/06	867	1.0424	0.9636	904	835	10020
1020	B.R.Parkway - So. Jct. Va. Hwy. 43 to U.S. Hwy. 221/460	10/24/06	545	1.0424	0.9636	568	525	10020
1021	B.R.Parkway - Va.Hwy.24 to Mill Mountain Road	10/24/06	2830	0.9145	0.8428	2588	2385	10031
1022	B.R.Parkway - U.S.Hwy.220 to Va.Hwy.640	10/24/06	600	0.9145	0.8428	549	506	10031
1023	Mill Mountain Road - B.R Parkway to Park Boundary	10/24/06	798	0.9040	0.8240	721	658	10032
1024	B.R.Parkway - Va.Hwy.640 to Va. Hwy.8.	10/24/06	654	0.9145	0.8428	598	551	10031
1025	B.R.Parkway - Va.Hwy. 8 to Va. Hwy.799.	10/24/06	977	1.0689	0.8380	1044	819	10050
1026	B.R.Parkway - Va.Hwy. 799 to U.S. Hwy.58	10/24/06	1224	1.0689	0.8380	1308	1026	10050
1027	B.R.Parkway - U.S.Hwy 58 to V.A. Hwy.691	10/24/06	820	1.0689	0.8380	876	687	10050
1028	B.R.Parkway - V.A. Hwy.691 to U.S.Hwy 52	10/24/06	1061	1.0689	0.8380	1134	889	10050
1029	B.R.Parkway - U.S.Hwy 52 to V.A. Hwy. 89	10/24/06	783	1.0689	0.8380	837	656	10050
1031	B.R.Parkway - V.A. Hwy. 89 to No. Jct. N.C. Hwy 18.	10/24/06	668	1.0689	0.8380	714	560	10050
1032	B.R.Parkway - No. Jct. N.C. Hwy 18. to U.S.Hwy.21	10/24/06	668	1.0689	0.8380	714	560	10050
1033	B.R.Parkway - U.S.Hwy.21 to Doughton Park	10/24/06	726	1.0689	0.8380	776	608	10050
1034	B.R.Parkway - Doughton Park to So. Jct. N.C. Hwy. 18	10/24/06	732	1.0689	0.8380	782	613	10050
1035	B.R.Parkway - So. Jct. N.C. Hwy. 18 to N.C. Hwy. 16	10/24/06	710	1.0689	0.8380	759	595	10050
1036	B.R.Parkway - N.C. Hwy. 16 to U.S.Hwy 421	10/24/06	701	1.0689	0.8380	749	587	10050
1037	B.R.Parkway - U.S.Hwy 421 to U.S.Hwy. 221/421 Conn.	10/24/06	1056	1.0689	0.8380	1129	885	10050
1038	B.R.Parkway - U.S.Hwy. 221/421 Conn. to U.S.Hwy 321	10/24/06	2156	1.0689	0.8380	2304	1807	10050
1040	Linville Falls Road - B.R Parkway to End of Route	10/24/06	688	1.0840	0.7860	746	541	10060
1041	B.R. Parkway - U.S.Hwy 221 to N.C.Hwy 226	10/24/06	1232	1.0840	0.7860	1335	968	10060
1042	B.R. Parkway - Crabtree Meadows to N.C. Hwy. 80	10/24/06	1142	1.0840	0.7860	1238	898	10060
1045	B.R. Parkway - N.C. Hwy. 80 to Folk Art Center	10/24/06	1237	1.0840	0.7860	1341	972	10060
1046	B.R. Parkway - U.S.Hwy.70 to U.S.Hwy.74	10/24/06	4438	0.9257	0.7475	4108	3317	10070
1047	B.R. Parkway - U.S.Hwy.25 to N.C.Hwy.151	10/24/06	1799	0.8121	0.5538	1461	996	4031
1048	B.R. Parkway - N.C.Hwy.151 to Mt.Pisgah.	10/24/06	1578	0.8121	0.5538	1281	874	4031
1049	B.R. Parkway - Mt.Pisgah. to U.S. Hwy. 276	10/24/06	1572	0.8121	0.5538	1277	871	4031
1050	B.R. Parkway - U.S. Hwy. 276 to N.C.Hwy.215	10/24/06	1165	0.8121	0.5538	946	645	4031
1051	B.R. Parkway - N.C.Hwy.215 to U.S.Hwy.23	10/24/06	988	0.8121	0.5538	802	547	4031
1052	B.R. Parkway - U.S.Hwy.23 to U.S.Hwy.19	10/24/06	973	0.8121	0.5538	790	539	4031
1053	B.R. Parkway - U.S.Hwy.19 to Balsam Mountain Road.	10/24/06	1317	0.8121	0.5538	1069	729	4031
4031	B.R. Parkway - Balsam Mountain Road to U.S Hwy.441.	10/24/06	1251	0.8121	0.5538	1016	693	4031
1054	Balsam Mountain Road - B.R Parkway to Overlook	10/24/06	91	0.8121	0.5538	74	50	4031

Note: AADT -- Annual Average Daily Traffic
 SADT -- Seasonal Average Daily Traffic computed using data for the months containing 80% of annual volume.
 REF. STA. -- a permanent Automated Traffic Recorder (ATR) reference station used to obtain seasonal and annual adjustment factors for coverage counts.

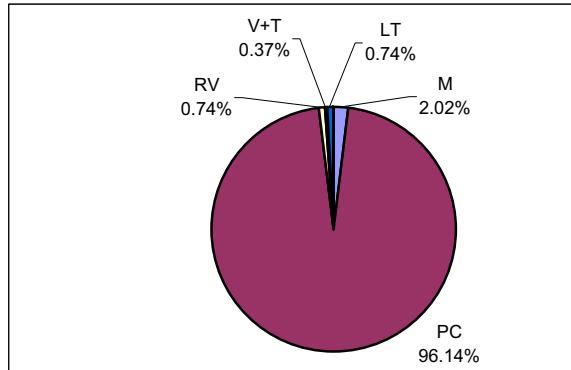
* A section of the BLRI near Sims Creek Bridge (at MP 295.4 on the Parkway) was closed during the counts for the construction. U.S. Hwy 221 was used for detour. A counter was placed on the ramp that led to the detour.

National Park Service Traffic Count Program

BLUE RIDGE PARKWAY

Vehicle Classification

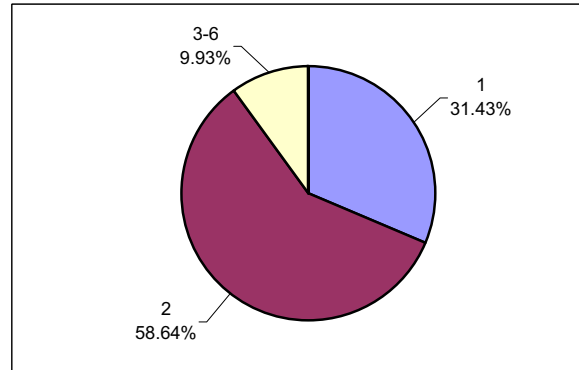
Location: STATION 1016



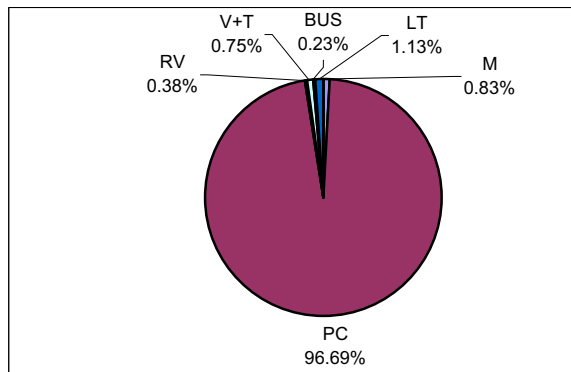
2006 TRAFFIC COMPOSITION SUMMARY

Vehicle Occupancy

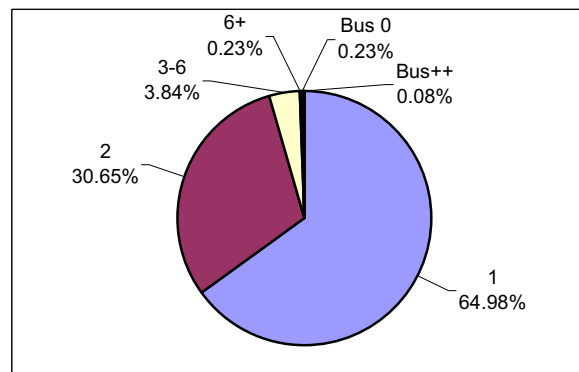
Location: STATION 1016



Location: STATION 10031



Location: STATION 10031



CLASSIFICATION LEGEND:

No.	Vehicle Type	FHWA Class
M	Motorcycles	Class 1
PC	Passenger Cars	Class 2
RV	Recreational Vehicles	N/A
V+T	Vehicles/RV pulling Trailer	N/A
BUS	Transit/Shuttle Buses	Class 4
TOUR	Tour Buses	Class 4
LT	Light-duty Trucks	Classes 3, 5
HT	Heavy-duty Trucks	Classes 6 - 13

OCCUPANCY LEGEND:

No.	Vehicle Occupancy
1	1 Occupant
2	2 Occupants
3-6	3-6 Occupants (car load)
6+	More than 6 Occupants, (non-Bus)
Bus 0	Bus, No Passengers
Bus +	Bus, Few Passengers
Bus++	Bus, Semi-Loaded
Bus Full	Bus, Fully Loaded

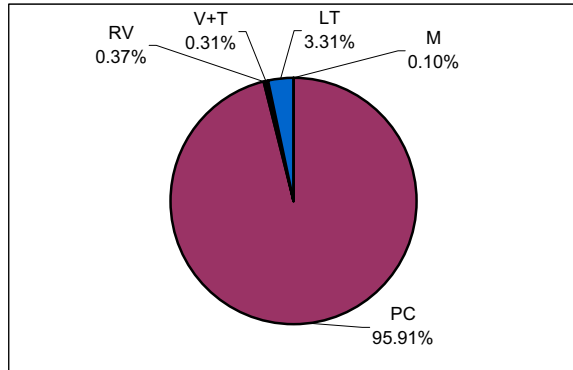
Note: Vehicle Classifications and Vehicle Occupancy values represented by 0% (No Occurrence) are not shown on the charts.

National Park Service Traffic Count Program

BLUE RIDGE PARKWAY

Vehicle Classification

Location: STATION 10070



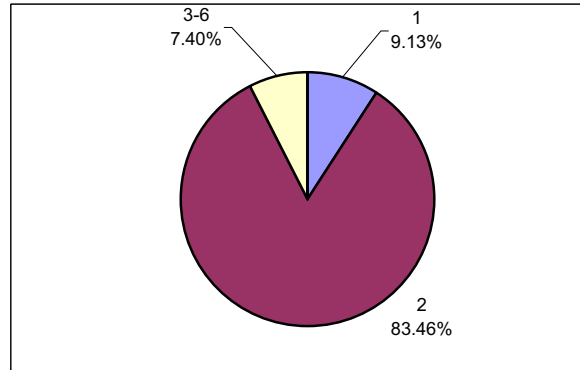
CLASSIFICATION LEGEND:

No.	Vehicle Type	FHWA Class
M	Motorcycles	Class 1
PC	Passenger Cars	Class 2
RV	Recreational Vehicles	N/A
V+T	Vehicles/RV pulling Trailer	N/A
BUS	Transit/Shuttle Buses	Class 4
TOUR	Tour Buses	Class 4
LT	Light-duty Trucks	Classes 3, 5
HT	Heavy-duty Trucks	Classes 6 - 13

2006 TRAFFIC COMPOSITION SUMMARY

Vehicle Occupancy

Location: STATION 10070



OCCUPANCY LEGEND:

No.	Vehicle Occupancy
1	1 Occupant
2	2 Occupants
3-6	3-6 Occupants (car load)
6+	More than 6 Occupants, (non-Bus)
Bus 0	Bus, No Passengers
Bus +	Bus, Few Passengers
Bus++	Bus, Semi-Loaded
Bus Full	Bus, Fully Loaded

Note: Vehicle Classifications and Vehicle Occupancy values represented by 0% (No Occurrence) are not shown on the charts.

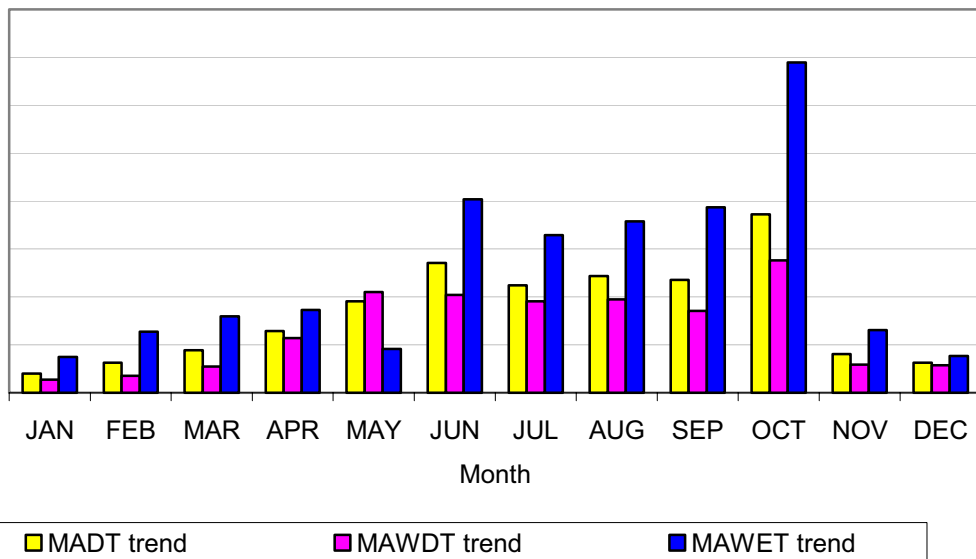
National Park Service Traffic Count Program

BLUE RIDGE PARKWAY

Station: 10010 B.R.Parkway - U.S. Hwy. 501 to Petites Gap

Month	Year	Annual Average Daily Traffic (AADTF)	Seasonal Average Daily Traffic (SADTF)
1	91	6.0621	8.6545
2	91	4.6960	6.7042
3	91	3.0311	4.3273
4	91	1.4624	2.0877
5	91	0.7920	1.1306
6	91	0.8152	1.1638
7	91	0.8728	1.2461
8	91	0.8549	1.2205
9	91	0.9749	1.3918
10	91	0.6040	0.8623
11	91	2.8256	4.0339
12	91	2.8993	4.1391

See Section 2.1.5



Note: AADTF is used to adjust coverage traffic volumes to AADT volume.
SADTF is used to adjust coverage traffic volumes to SADT volume.
SADT -- Seasonal Average Daily Traffic for the months containing 80% of annual volume.

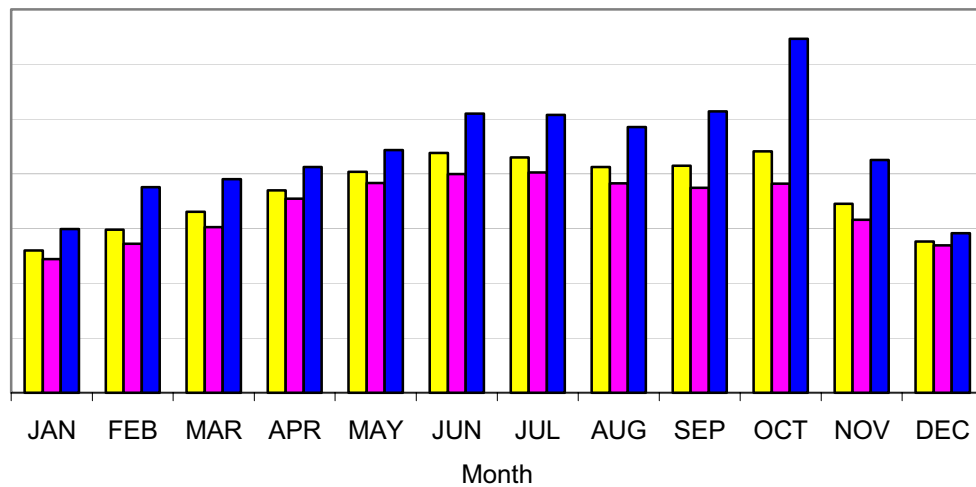
National Park Service Traffic Count Program

BLUE RIDGE PARKWAY

Station: 10020 B.R.Parkway - U.S. Hwy. 221/460 to Va.Hwy.24

Month	Year	Annual Average Daily Traffic Factor (AADTF)	Seasonal Average Daily Traffic Factor (SADTF)
1	91	1.5074	1.6306
2	91	1.3543	1.4650
3	91	1.2165	1.3159
4	91	1.0392	1.1242
5	91	0.9606	1.0391
6	91	0.9216	0.9970
7	91	0.9148	0.9896
8	91	0.9626	1.0413
9	91	0.9842	1.0647
10	90	0.9636	1.0424
11	90	1.1663	1.2617
12	90	1.3674	1.4792

See Section 2.1.5



Note: AADTF is used to adjust coverage traffic volumes to AADT volume.
 SADTF is used to adjust coverage traffic volumes to SADT volume.
 SADT -- Seasonal Average Daily Traffic for the months containing 80% of annual volume.

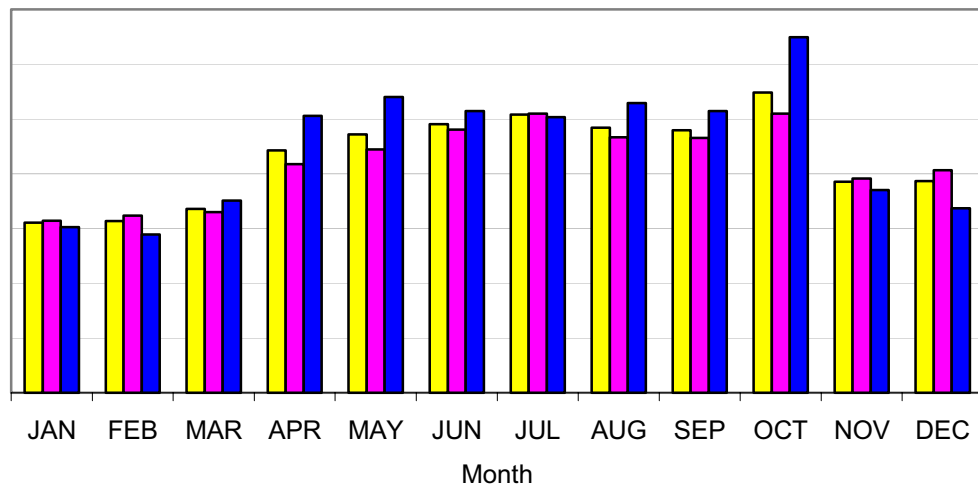
National Park Service Traffic Count Program

BLUE RIDGE PARKWAY

Station: 10031 B.R.Parkway - Mill Mountain Road to U.S.Hwy.220

Month	Year	Annual Average Daily Traffic Factor (AADTF)	Seasonal Average Daily Traffic Factor (SADTF)
1	93-94	1.3683	1.4847
2	93-94	1.3294	1.4425
3	93-94	1.3028	1.4136
4	93-94	1.0289	1.1164
5	93-94	0.9672	1.0495
6	93-94	0.8940	0.9700
7	93-94	0.8434	0.9152
8	93-94	0.9216	1.0000
9	93-94	0.9236	1.0021
10	92	0.8428	0.9145
11	93-94	1.0988	1.1923
12	93-94	1.0572	1.1471

See Section 2.1.5



MADT trend
 MAWDT trend
 MAWET trend

Note: AADTF is used to adjust coverage traffic volumes to AADT volume.
 SADTF is used to adjust coverage traffic volumes to SADT volume.
 SADT -- Seasonal Average Daily Traffic for the months containing 80% of annual volume.

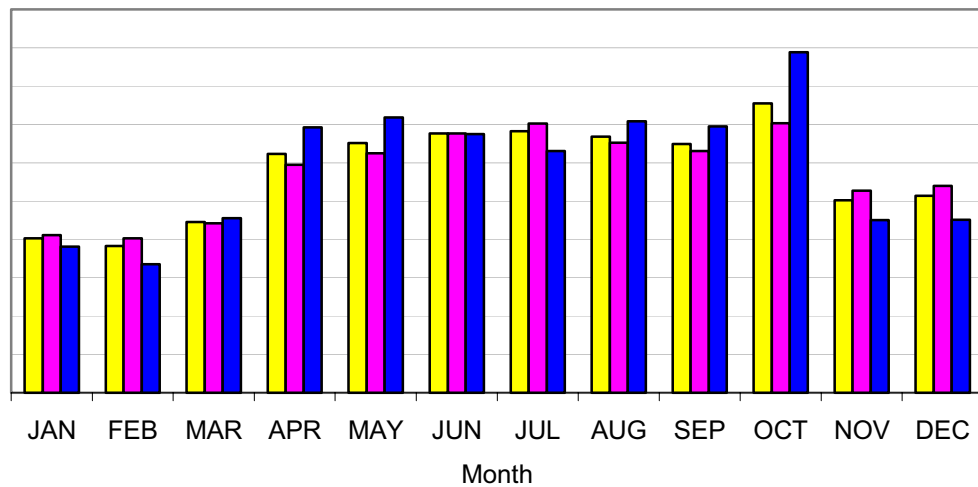
National Park Service Traffic Count Program

BLUE RIDGE PARKWAY

Station: 10032 RAMP FROM BLUE RIDGE PKWY TO U.S.220

Month	Year	Annual Average Daily Traffic Factor (AADTF)	Seasonal Average Daily Traffic Factor (SADTF)
1	93-94	1.4095	1.5462
2	93-94	1.4392	1.5789
3	93-94	1.3106	1.4378
4	93-94	0.9736	1.0681
5	93-94	0.9276	1.0176
6	93-94	0.8563	0.9394
7	93-94	0.8246	0.9046
8	93-94	0.8885	0.9747
9	93-94	0.9188	1.0079
10	92	0.8240	0.9040
11	92	1.0982	1.2047
12	93-94	1.0738	1.1779

See Section 2.1.5



Note: AADTF is used to adjust coverage traffic volumes to AADT volume.
 SADTF is used to adjust coverage traffic volumes to SADT volume.
 SADT -- Seasonal Average Daily Traffic for the months containing 80% of annual volume.

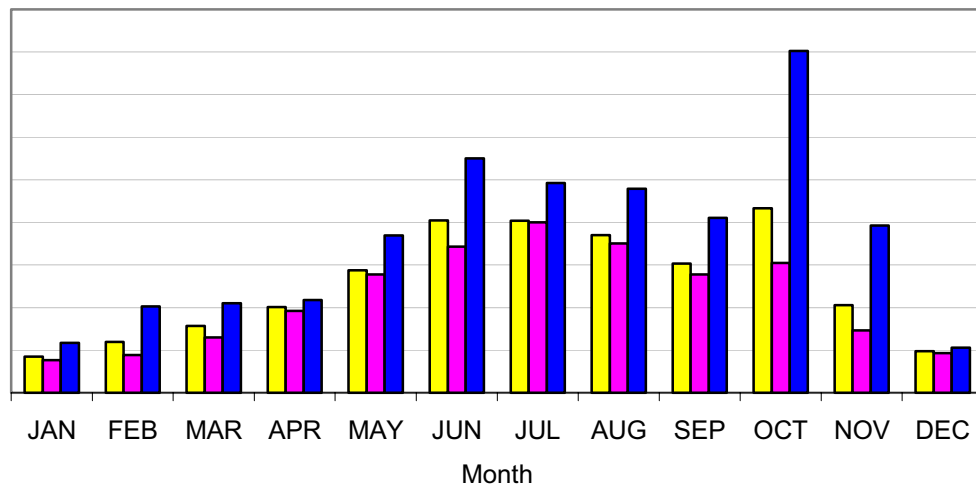
National Park Service Traffic Count Program

BLUE RIDGE PARKWAY

Station: 10050 B.R. Parkway - U.S.Hwy 321 to U.S.Hwy 221

Month	Year	Annual Average Daily Traffic Factor (AADTF)	Seasonal Average Daily Traffic Factor (SADTF)
1	91	3.3455	4.2670
2	91	2.8849	3.6795
3	91	1.9631	2.5038
4	91	1.3313	1.6979
5	91	0.9201	1.1735
6	91	0.7452	0.9504
7	91	0.6393	0.8154
8	91	0.7295	0.9304
9	91	0.9207	1.1744
10	90	0.8380	1.0689
11	90	1.7483	2.2298
12	90	2.7425	3.4979

See Section 2.1.5



Note: AADTF is used to adjust coverage traffic volumes to AADT volume.
 SADTF is used to adjust coverage traffic volumes to SADT volume.
 SADT -- Seasonal Average Daily Traffic for the months containing 80% of annual volume.

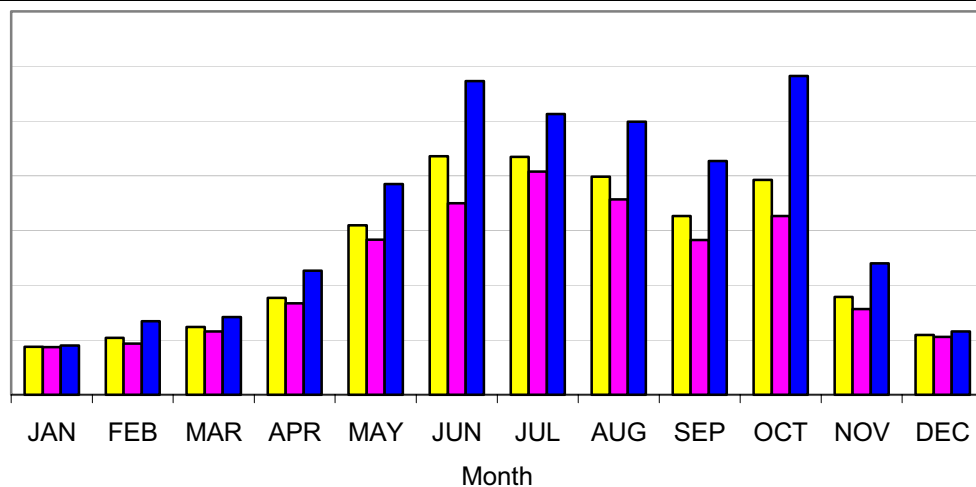
National Park Service Traffic Count Program

BLUE RIDGE PARKWAY

Station: 10060 B.R. Parkway - N.C.Hwy 226 to Crabtree Meadows

Month	Year	Annual Average Daily Traffic Factor (AADTF)	Seasonal Average Daily Traffic Factor (SADTF)
1	91	2.9469	4.0644
2	91	2.7450	3.7859
3	91	2.2217	3.0641
4	91	1.5352	2.1174
5	91	0.9053	1.2486
6	91	0.7334	1.0114
7	91	0.6293	0.8679
8	91	0.7182	0.9905
9	91	0.9066	1.2504
10	90	0.7860	1.0840
11	90	1.6372	2.2580
12	90	2.4279	3.3485

See Section 2.1.5



Note: AADTF is used to adjust coverage traffic volumes to AADT volume.
SADTF is used to adjust coverage traffic volumes to SADT volume.
SADT -- Seasonal Average Daily Traffic for the months containing 80% of annual volume.

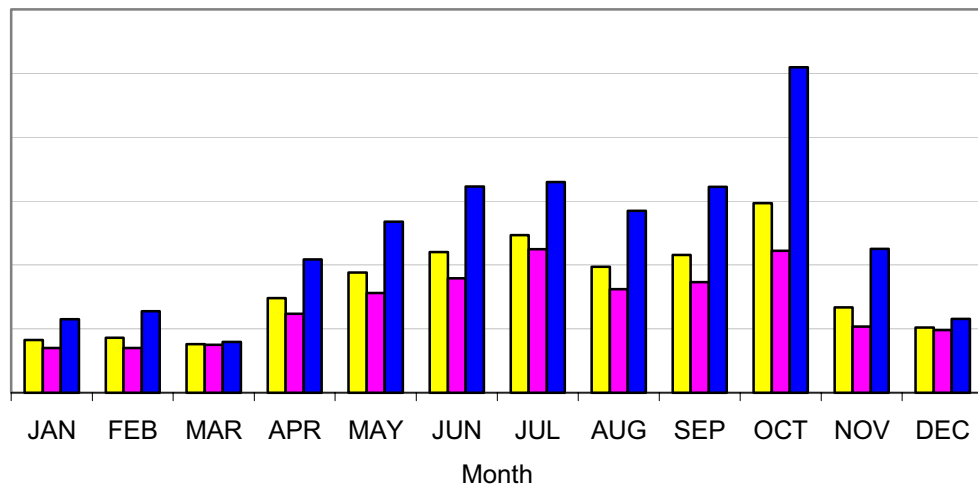
National Park Service Traffic Count Program

BLUE RIDGE PARKWAY

Station: 10070 B.R. Parkway - Folk Art Center to U.S.Hwy.70

Month	Year	Annual Average Daily Traffic Factor (AADTF)	Seasonal Average Daily Traffic Factor (SADTF)
1	93-94	2.3761	2.9428
2	93-94	2.3761	2.9428
3	93-94	2.2146	2.7427
4	93-94	1.3416	1.6616
5	93-94	1.0633	1.3169
6	93-94	0.9279	1.1492
7	92	0.7388	0.9150
8	93-94	1.0259	1.2705
9	93-94	0.9595	1.1883
10	90	0.7475	0.9257
11	90	1.6001	1.9817
12	90	1.6948	2.0990

See Section 2.1.5



Note: AADTF is used to adjust coverage traffic volumes to AADT volume.
 SADTF is used to adjust coverage traffic volumes to SADT volume.
 SADT -- Seasonal Average Daily Traffic for the months containing 80% of annual volume.

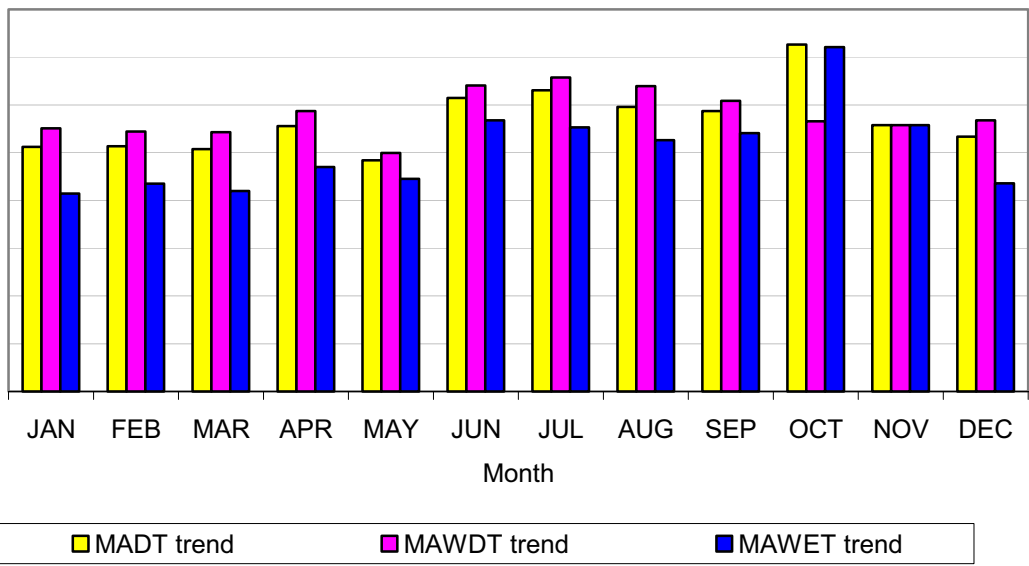
National Park Service Traffic Count Program

BLUE RIDGE PARKWAY

Station: 10081 B.R. Parkway - U.S.Hwy.74 to U.S.Hwy.25

Month	Year	Annual Average Daily Traffic Factor (AADTF)	Seasonal Average Daily Traffic Factor (SADTF)
1	93-94	1.0309	1.0561
2	93-94	1.0434	1.0689
3	93-94	1.0466	1.0722
4	92	0.9680	0.9917
5	93-94	1.1374	1.1652
6	92	0.8864	0.9081
7	92	0.8639	0.8850
8	92	0.8891	0.9108
9	92	0.9333	0.9561
10	90	1.0048	1.0294
11	92	1.0188	1.0438
12	92	1.0009	1.0254

See Section 2.1.5



Note: AADTF is used to adjust coverage traffic volumes to AADT volume.
 SADTF is used to adjust coverage traffic volumes to SADT volume.
 SADT -- Seasonal Average Daily Traffic for the months containing 80% of annual volume.

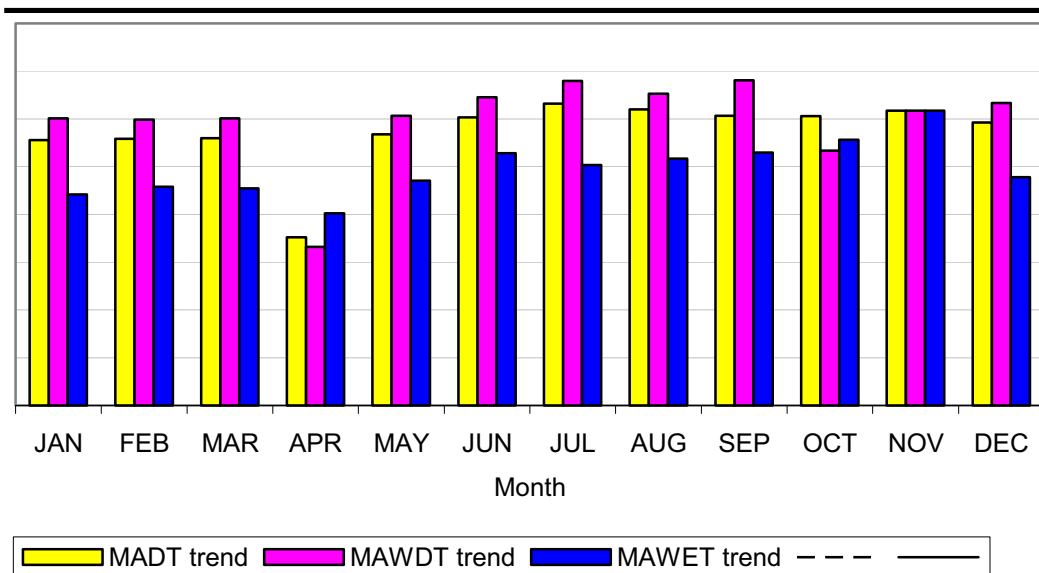
National Park Service Traffic Count Program

BLUE RIDGE PARKWAY

Station: 10082 RAMP TO U.S 25 @ JCT U.S 25 & BLUE RIDGE PKWY

Month	Year	Annual Average Daily Traffic Factor (AADTF)	Seasonal Average Daily Traffic Factor (SADTF)
1	93-94	0.9524	0.9914
2	93-94	0.9566	0.9957
3	93-94	0.9521	0.9910
4	93-94	1.7247	1.7952
5	93-94	0.9436	0.9822
6	92	0.8872	0.9235
7	92	0.8431	0.8775
8	92	0.8769	0.9127
9	92	0.8408	0.8752
10	90	1.0731	1.1169
11	92	0.9277	0.9657
12	92	0.9043	0.9413

See Section 2.1.5



Note: AADTF is used to adjust coverage traffic volumes to AADT volume.
 SADTF is used to adjust coverage traffic volumes to SADT volume.
 SADT -- Seasonal Average Daily Traffic for the months containing 80% of annual volume.

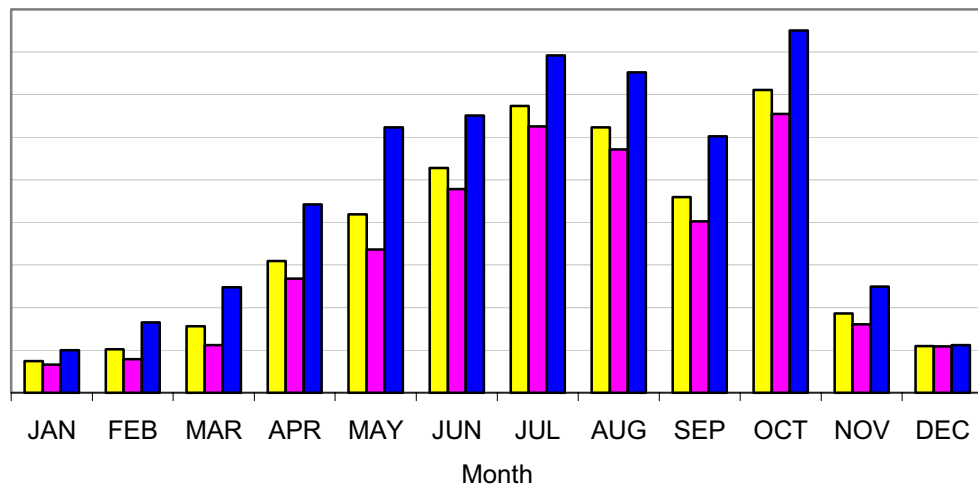
National Park Service Traffic Count Program

BLUE RIDGE PARKWAY

Station: 4031 B.R. Parkway - Balsam Mountain Road to U.S Hwy.441.

Month	Year	Annual Average Daily Traffic Factor (AADTF)	Seasonal Average Daily Traffic Factor (SADTF)
1	92	5.4918	8.0530
2	92	4.6173	6.7707
3	92	3.2507	4.7668
4	92	1.3525	1.9832
5	93-94	1.0771	1.5795
6	93-94	0.7583	1.1119
7	93-94	0.5795	0.8497
8	93-94	0.6348	0.9308
9	93-94	0.9005	1.3205
10	93-94	0.5538	0.8121
11	93-94	2.2583	3.3115
12	93-94	3.3253	4.8761

See Section 2.1.5

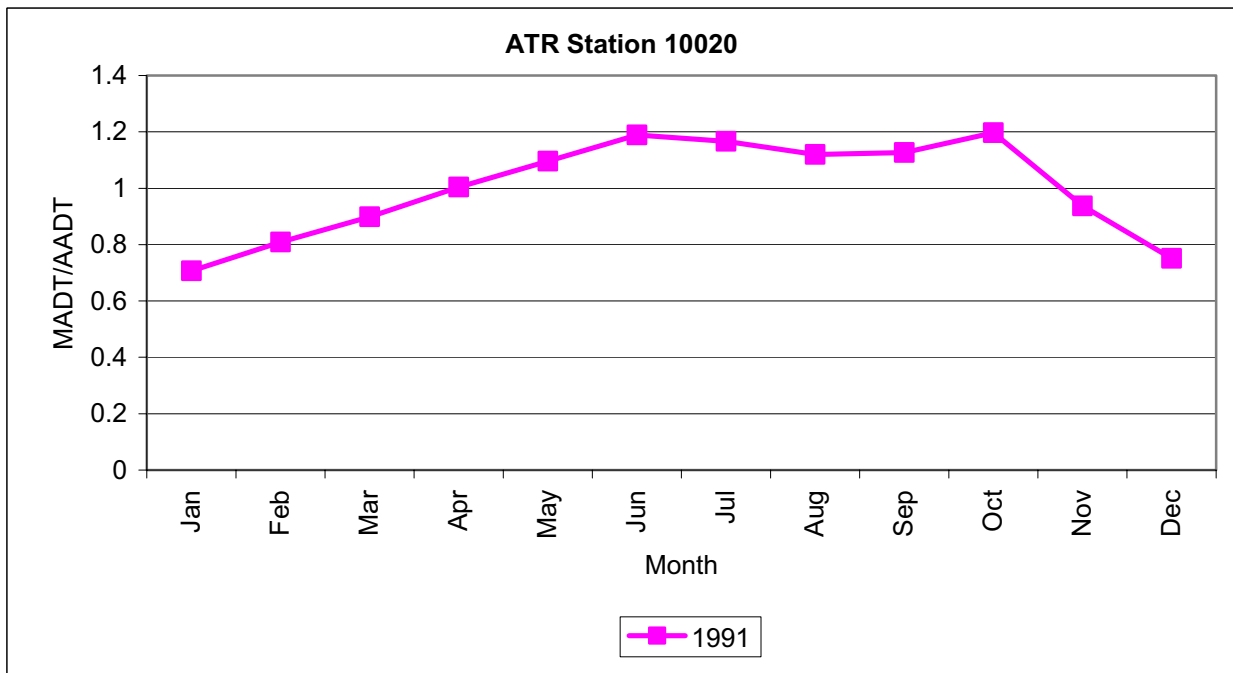
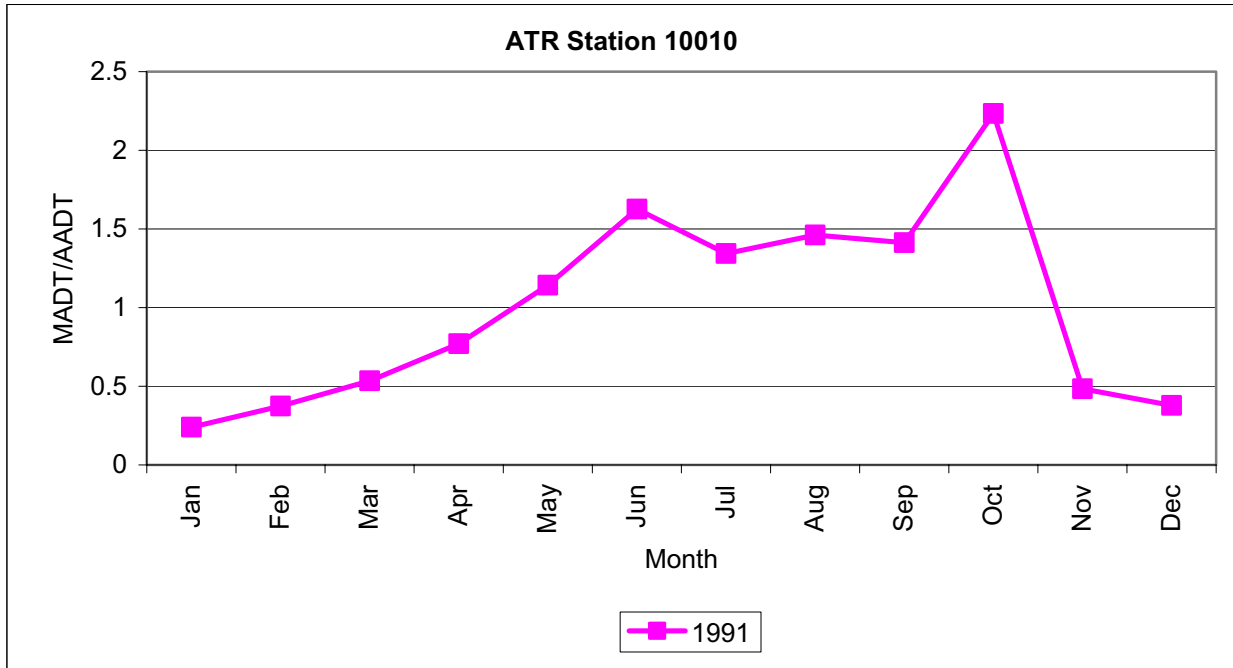


Note: AADTF is used to adjust coverage traffic volumes to AADT volume.
 SADTF is used to adjust coverage traffic volumes to SADT volume.
 SADT -- Seasonal Average Daily Traffic for the months containing 80% of annual volume.

National Park Service Traffic Count Program

BLUE RIDGE PARKWAY

HISTORICAL SEASONAL TRAFFIC TREND SUMMARY

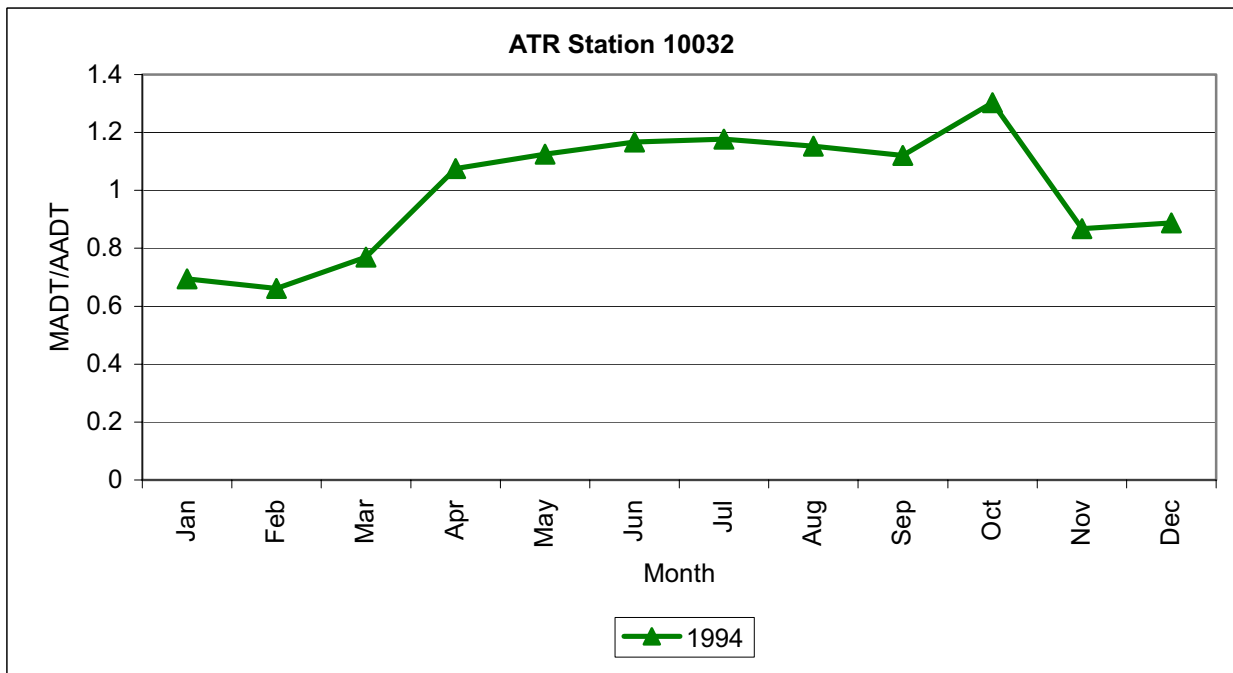
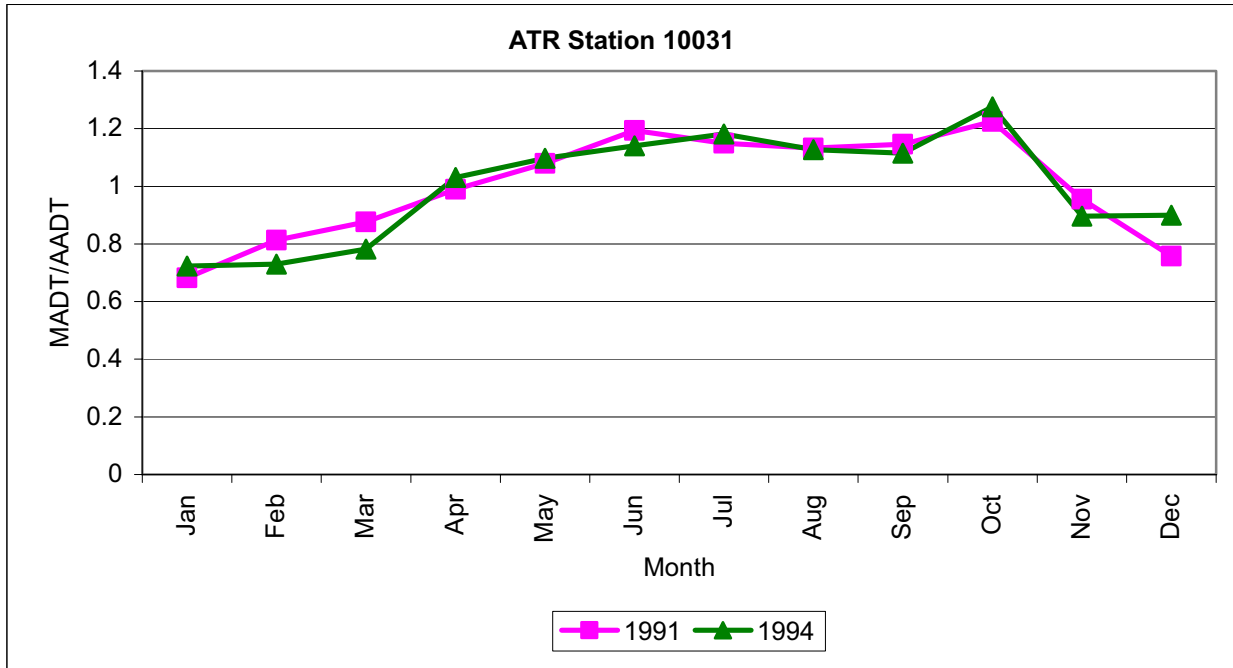


Note: MADT -- Monthly Average Daily Traffic
AADT -- Annual Average Daily Traffic

National Park Service Traffic Count Program

BLUE RIDGE PARKWAY

HISTORICAL SEASONAL TRAFFIC TREND SUMMARY

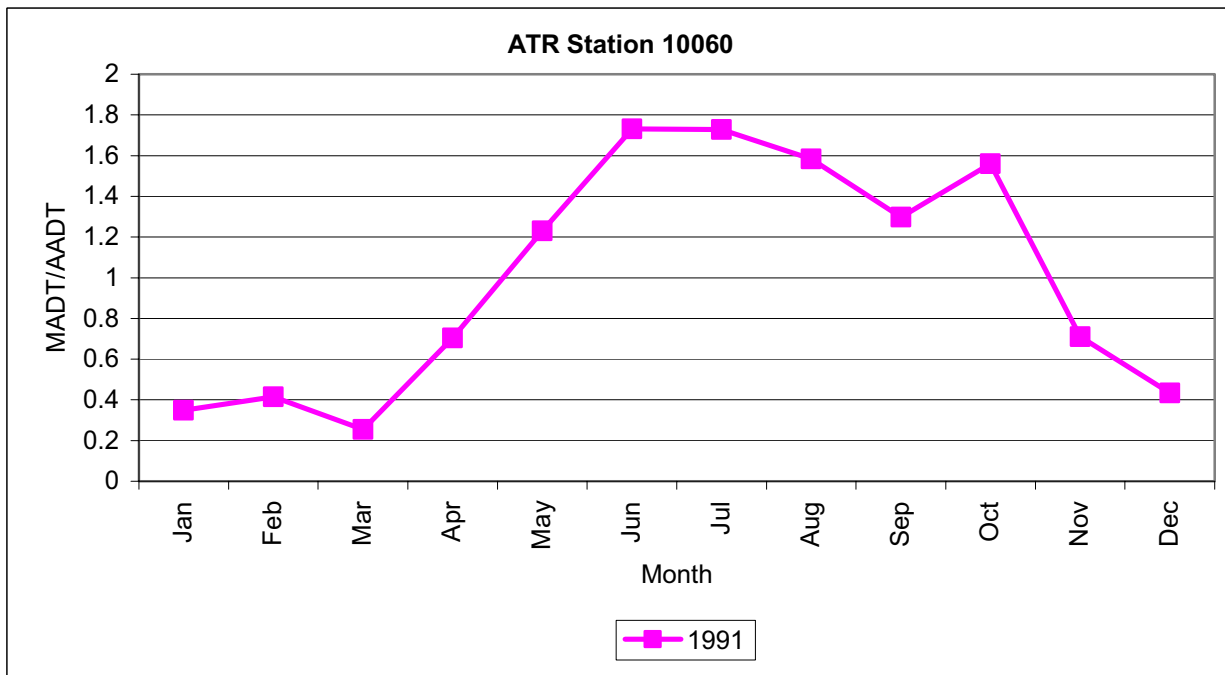
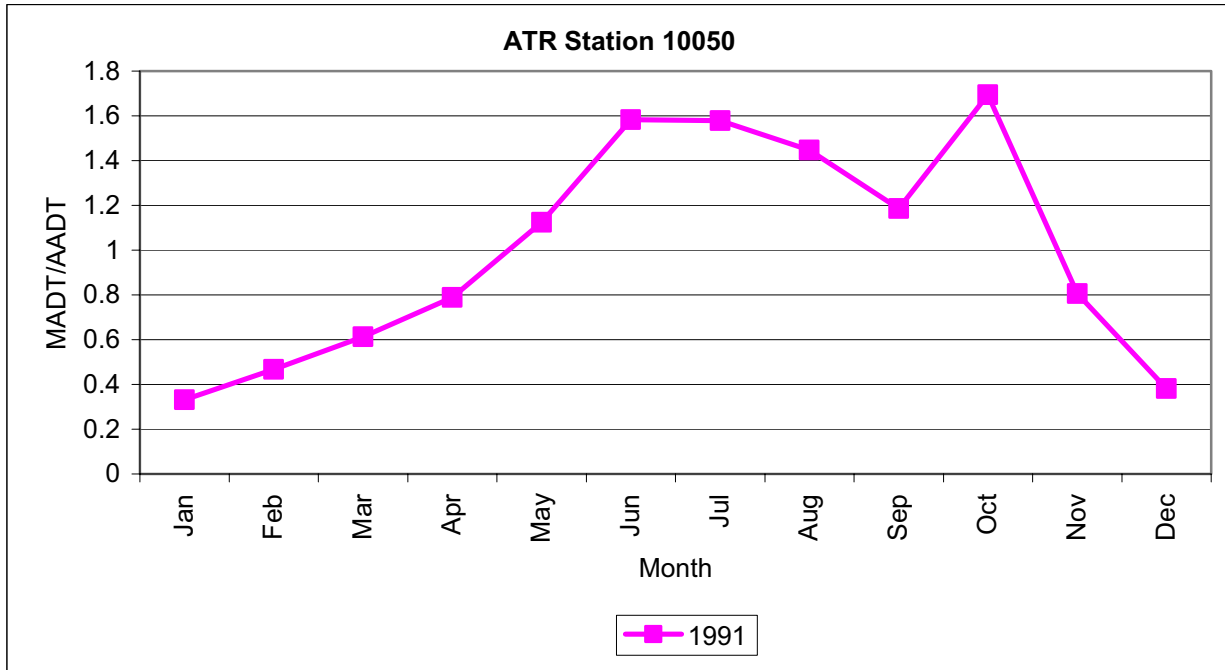


Note: MADT -- Monthly Average Daily Traffic
AADT -- Annual Average Daily Traffic

National Park Service Traffic Count Program

BLUE RIDGE PARKWAY

HISTORICAL SEASONAL TRAFFIC TREND SUMMARY

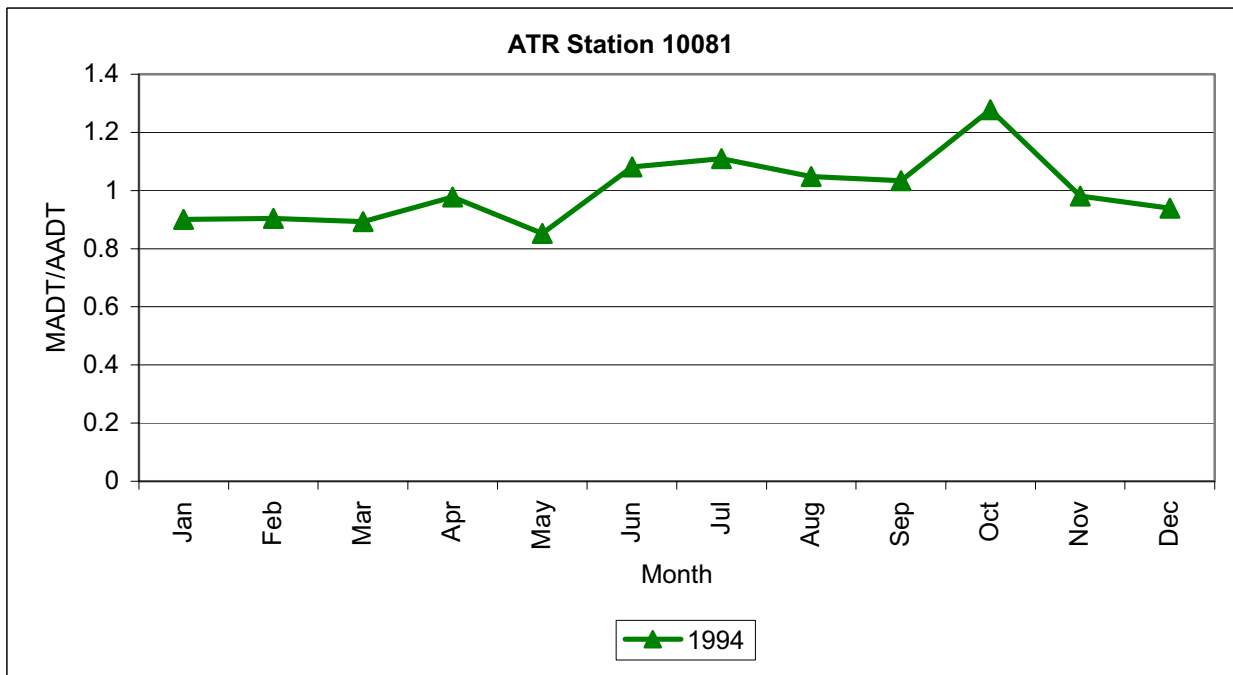
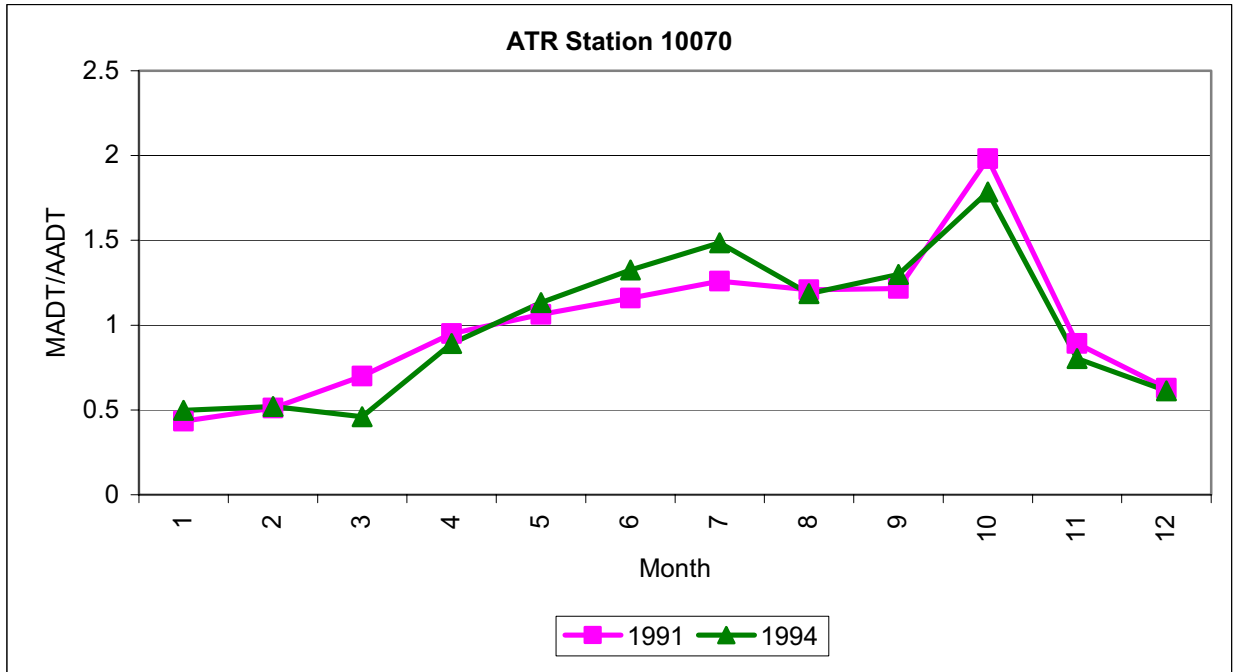


Note: MADT -- Monthly Average Daily Traffic
AADT -- Annual Average Daily Traffic

National Park Service Traffic Count Program

BLUE RIDGE PARKWAY

HISTORICAL SEASONAL TRAFFIC TREND SUMMARY

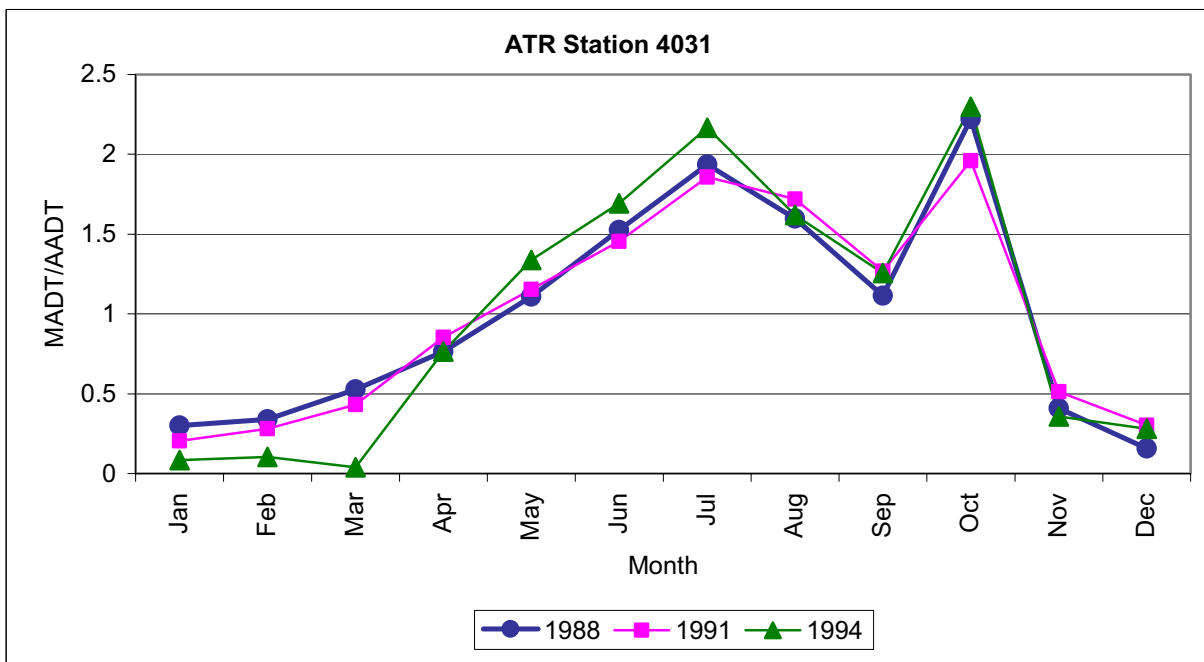
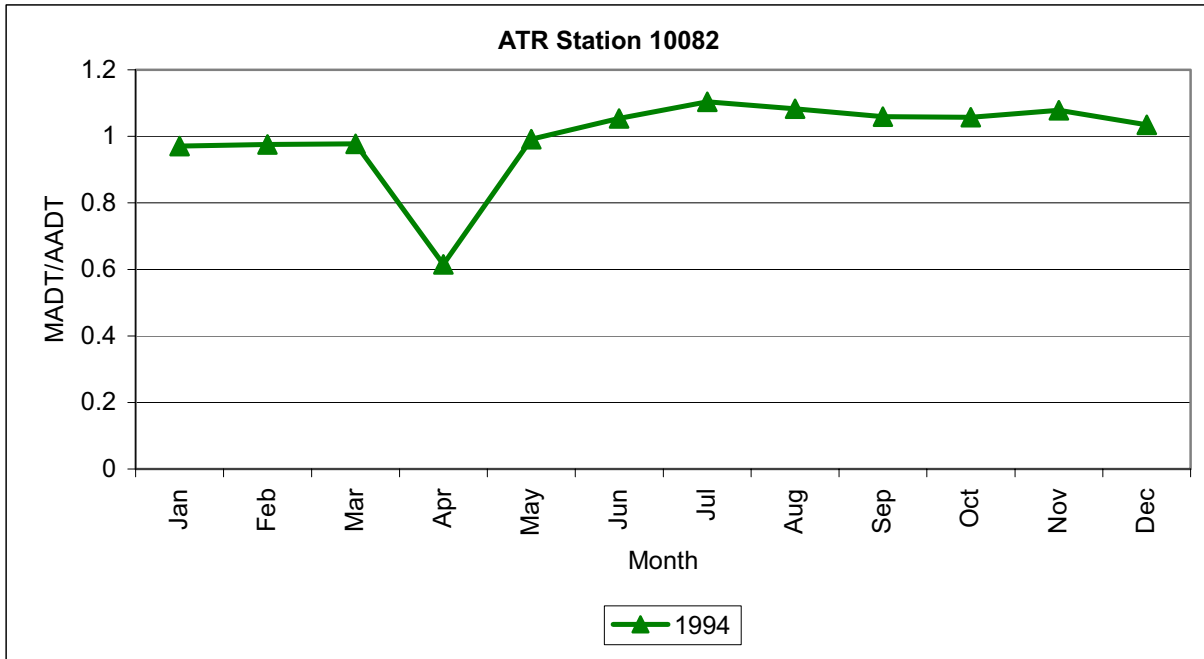


Note: MADT -- Monthly Average Daily Traffic
AADT -- Annual Average Daily Traffic

National Park Service Traffic Count Program

BLUE RIDGE PARKWAY

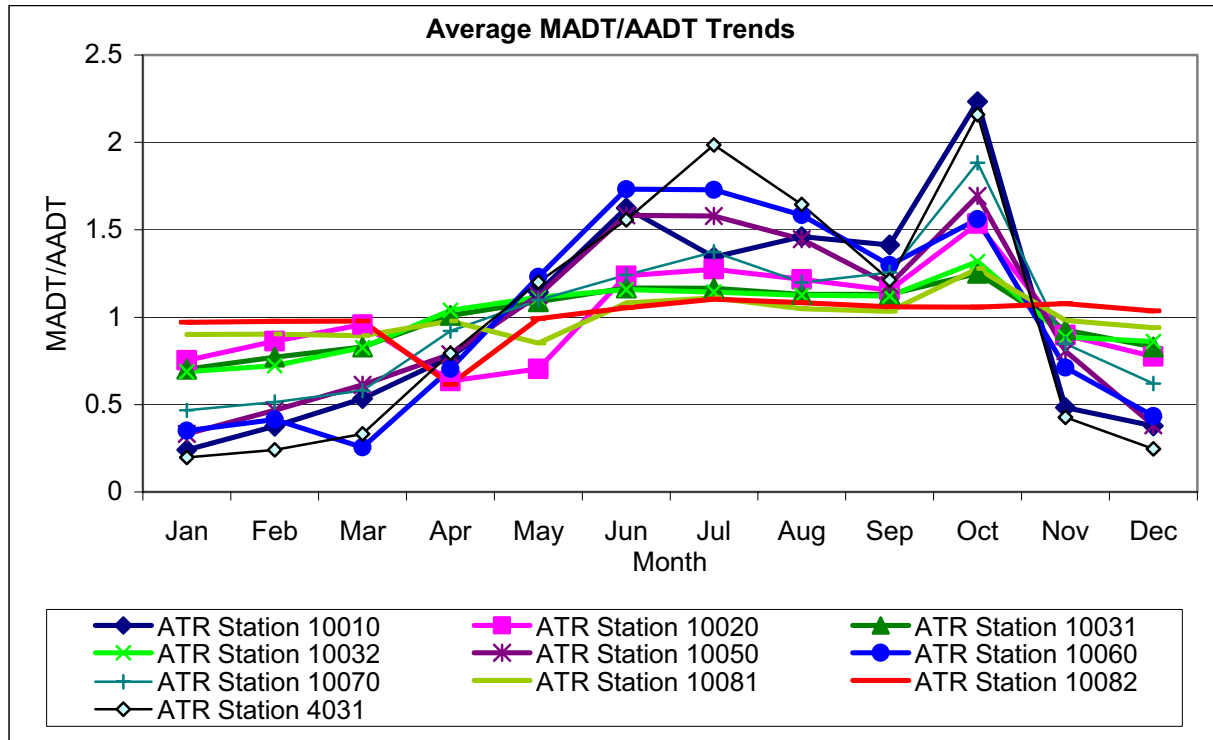
HISTORICAL SEASONAL TRAFFIC TREND SUMMARY



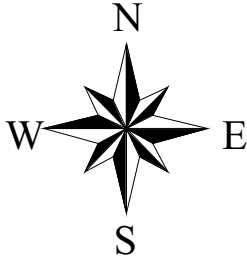
Note: MADT -- Monthly Average Daily Traffic
AADT -- Annual Average Daily Traffic

BLUE RIDGE PARKWAY

HISTORICAL SEASONAL TRAFFIC TREND SUMMARY

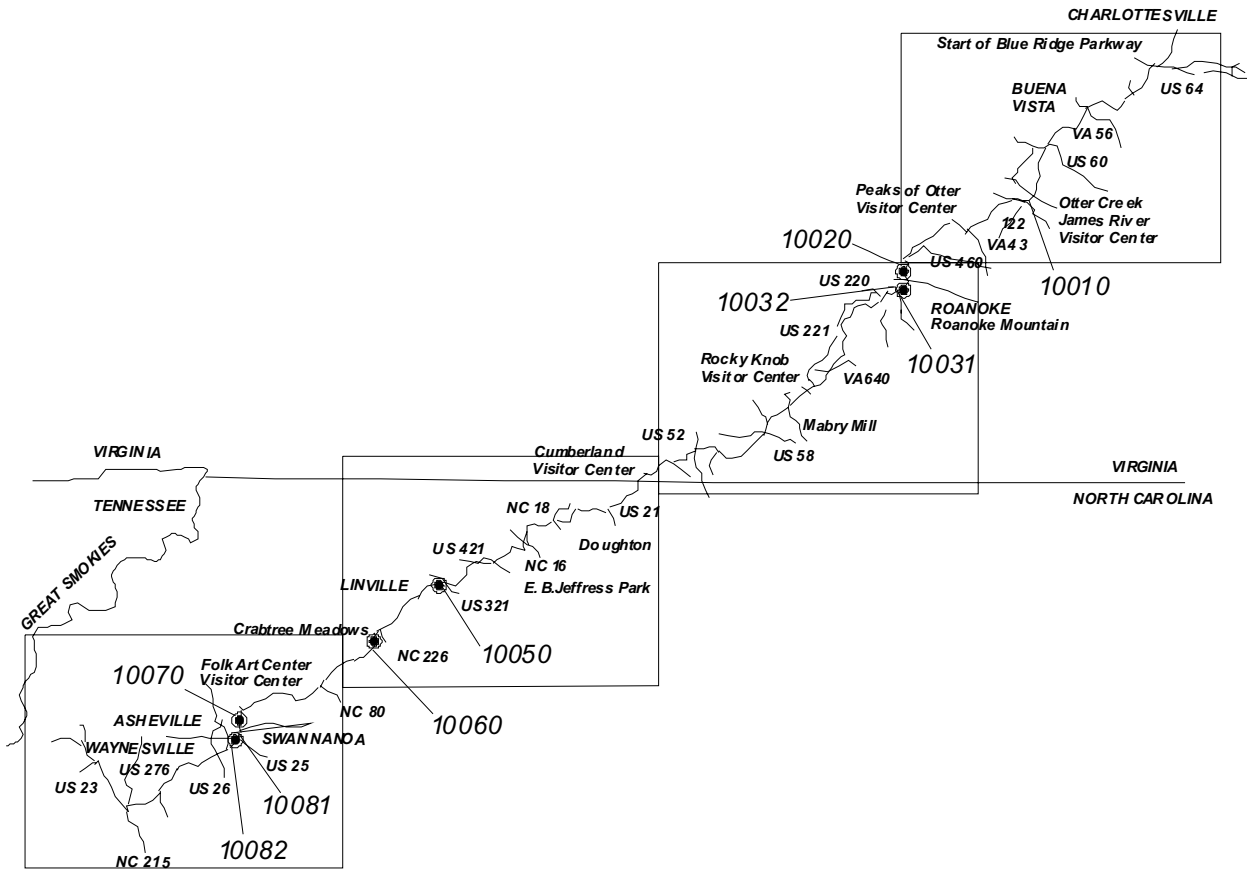


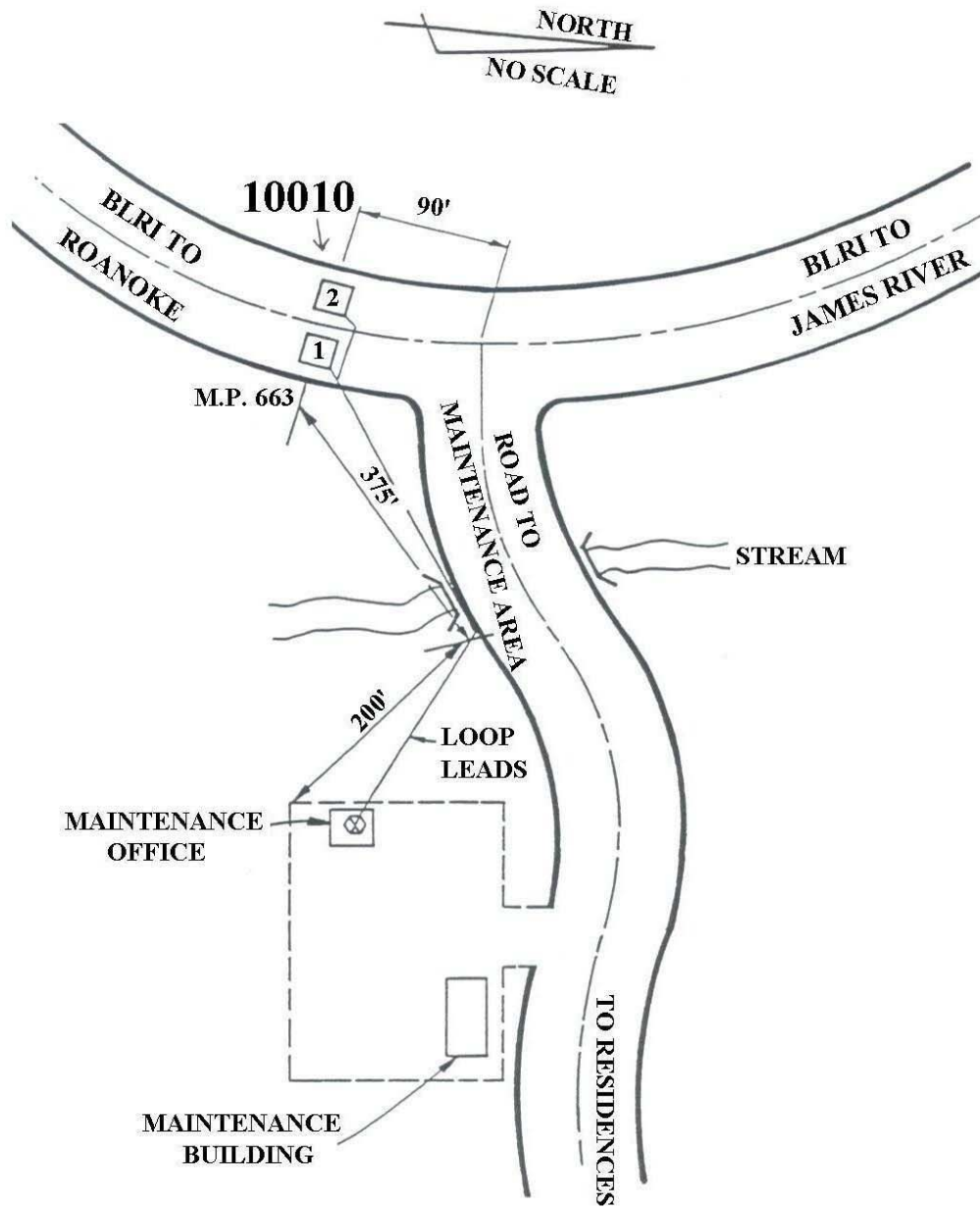
Note: MADT -- Monthly Average Daily Traffic
AADT -- Annual Average Daily Traffic



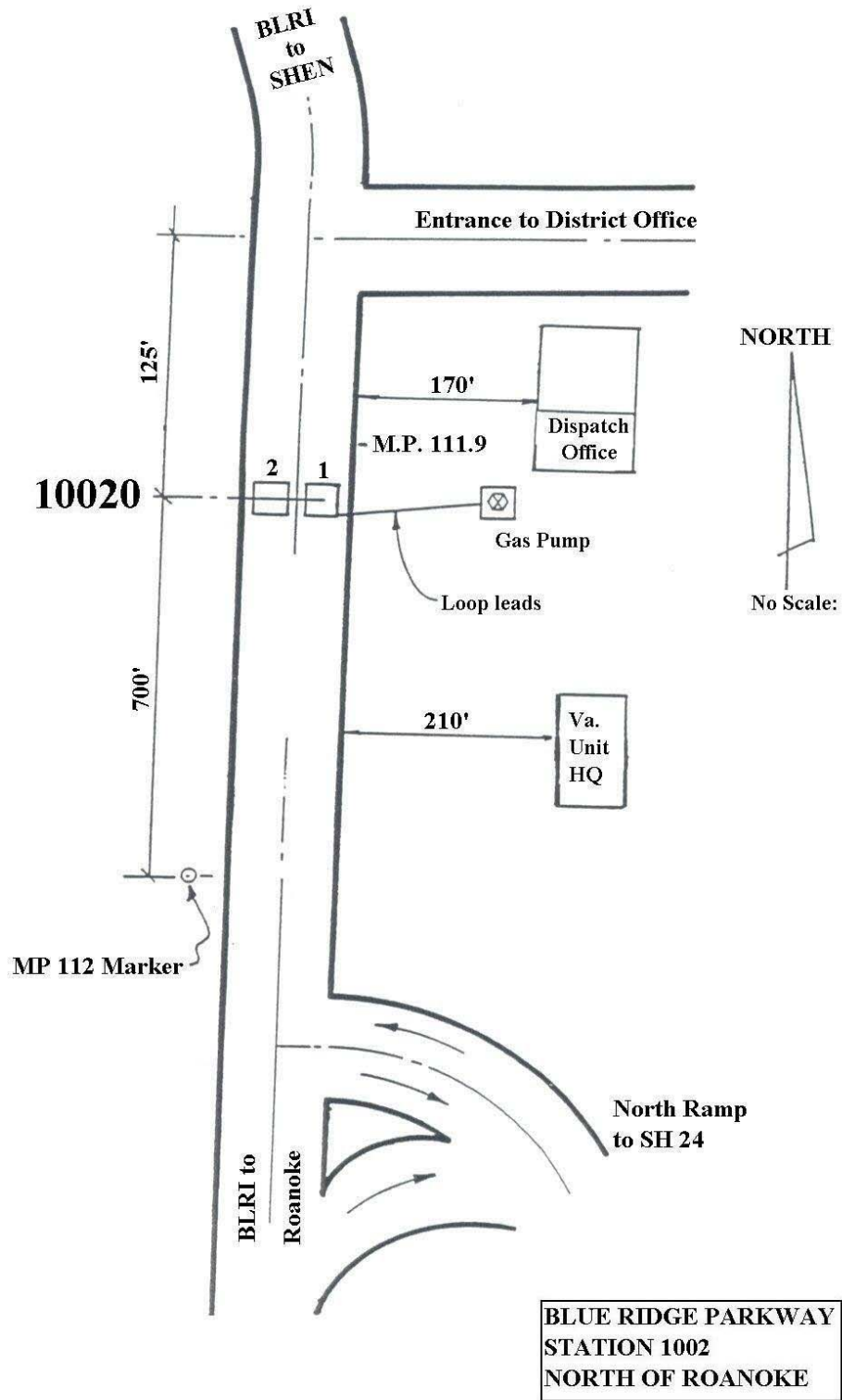
Blue Ridge Parkway

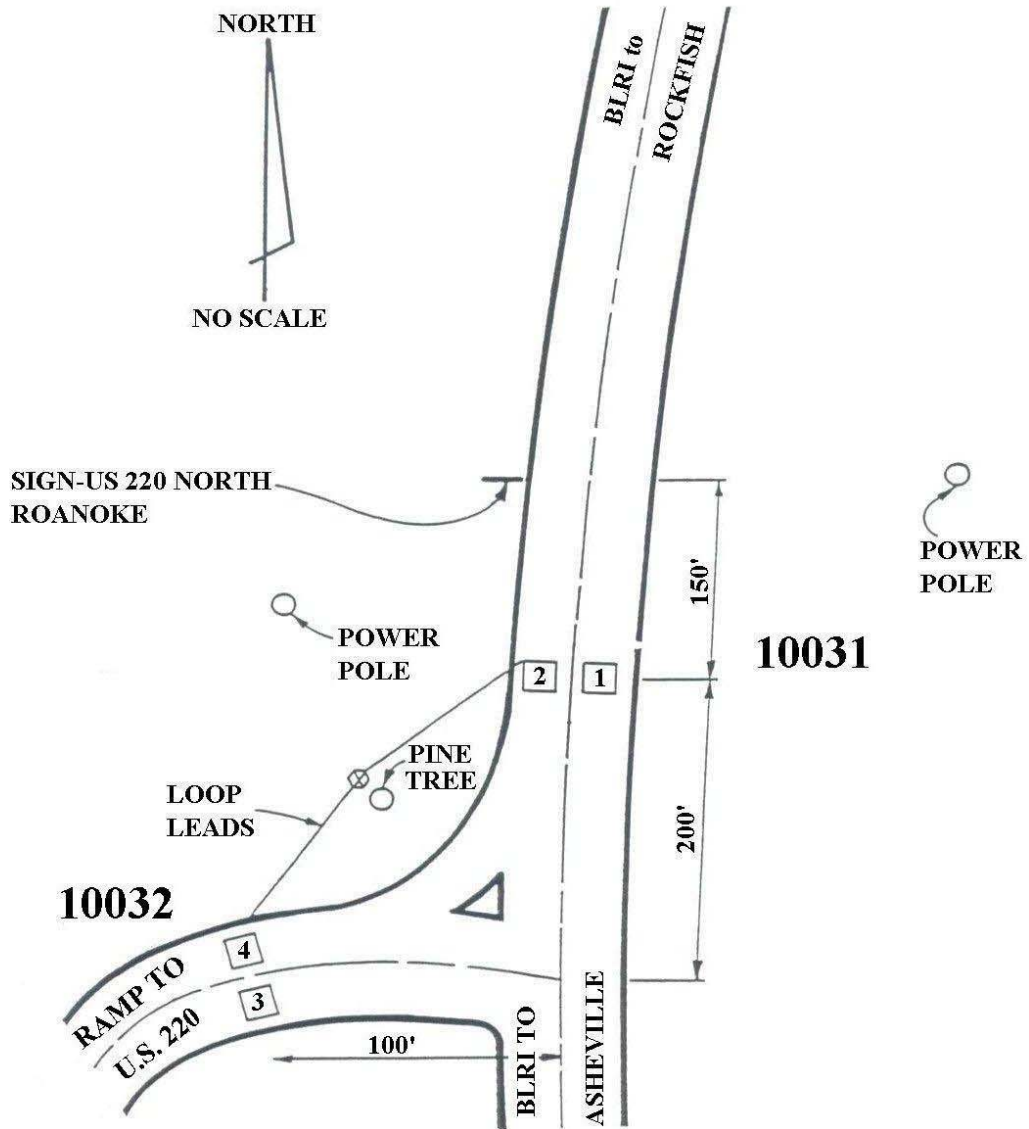
North Carolina and Virginia
U.S. Department of Interior
NATIONAL PARK SERVICE



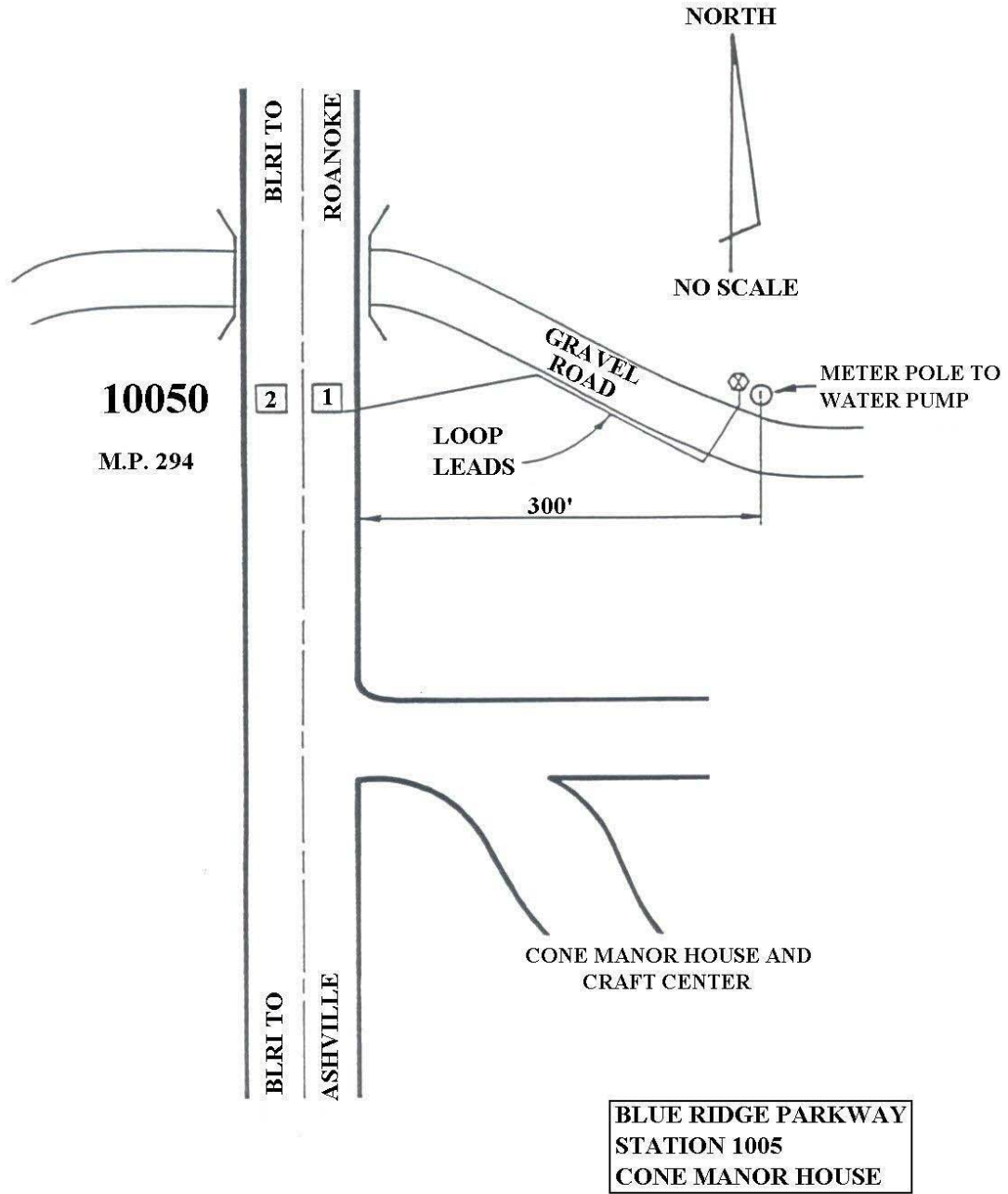


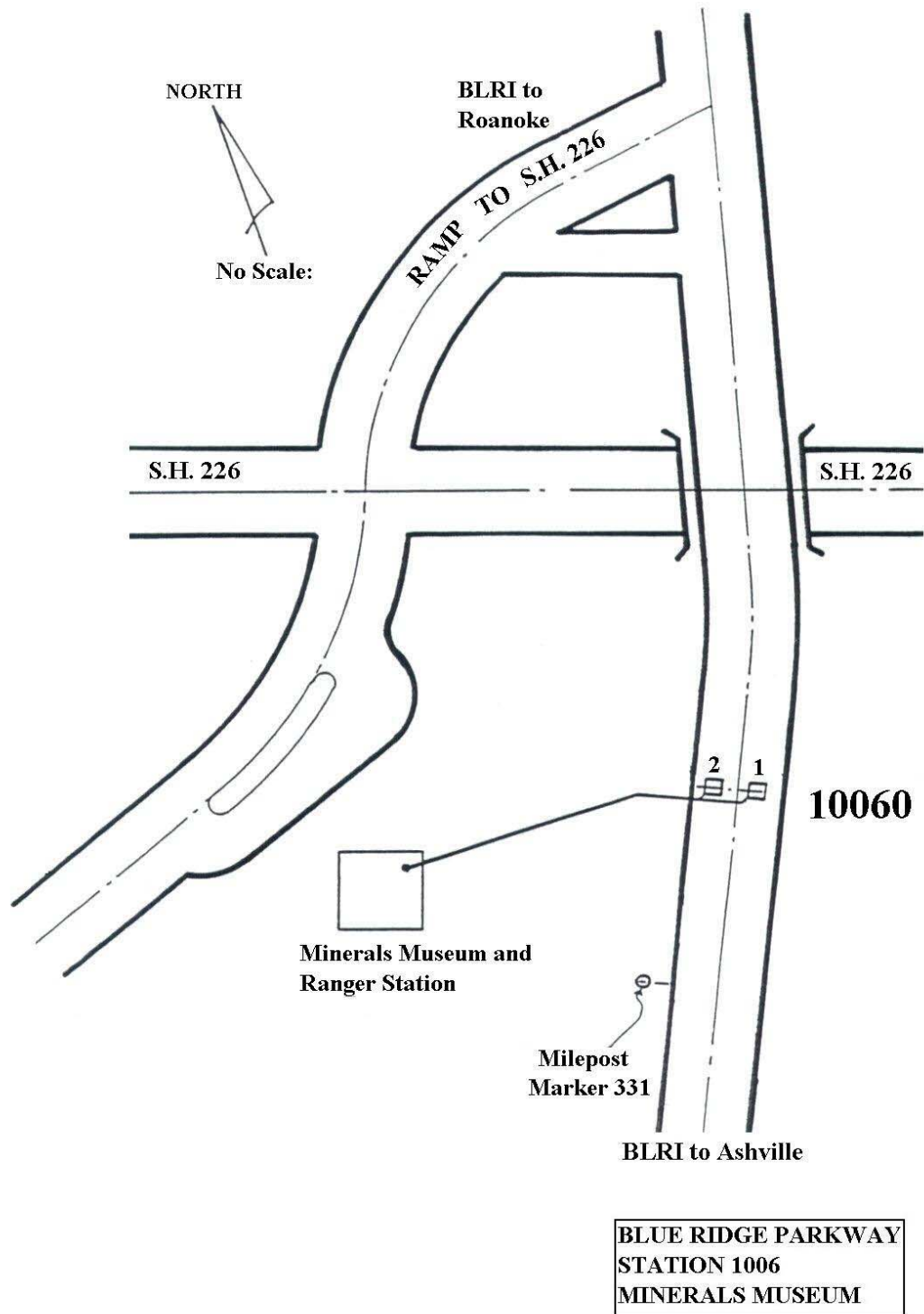
BLUE RIDGE PARKWAY
STATION 1001
JAMES RIVER

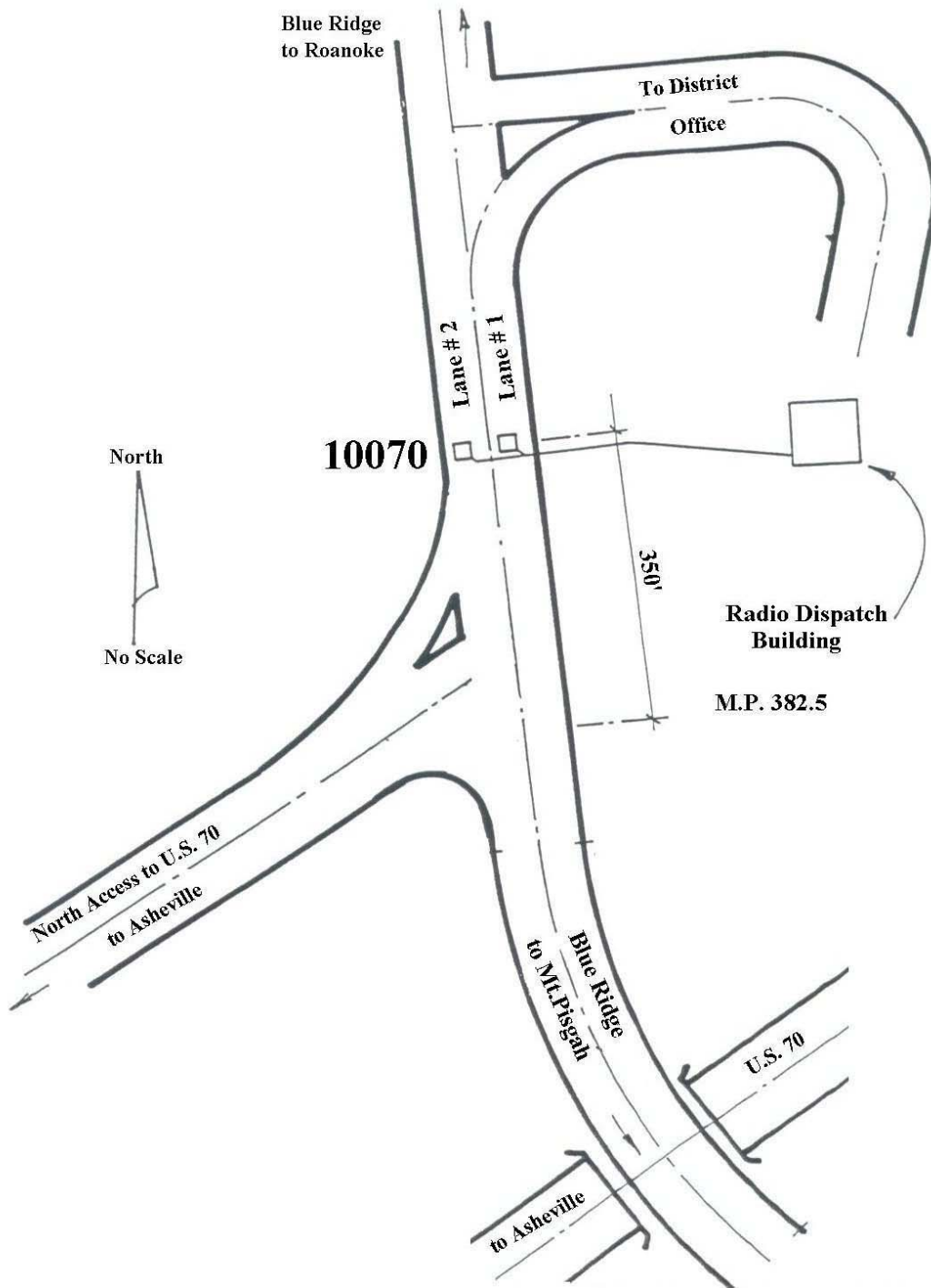




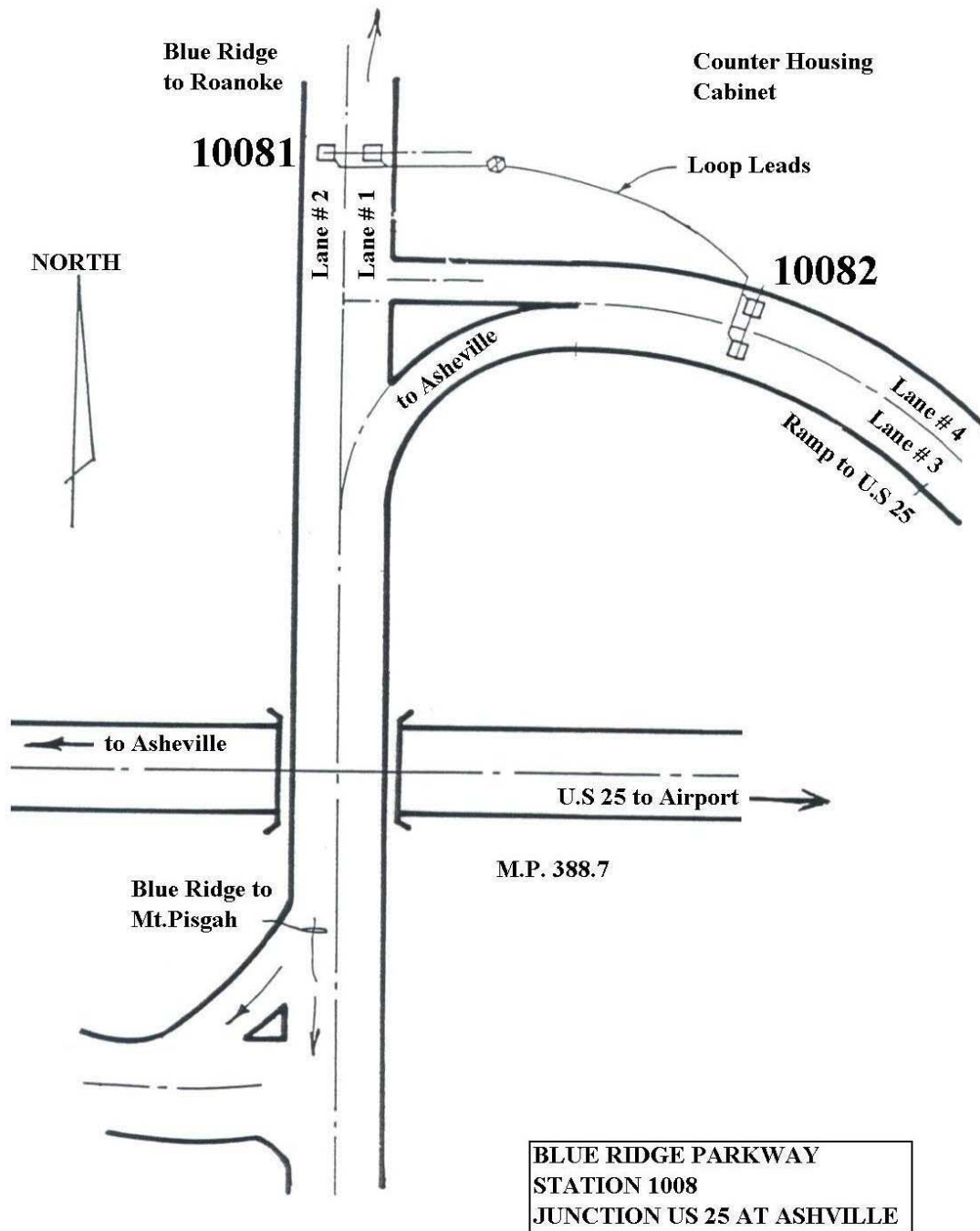
BLUE RIDGE PARKWAY
STATION 1003
EAST OF ROANOKE

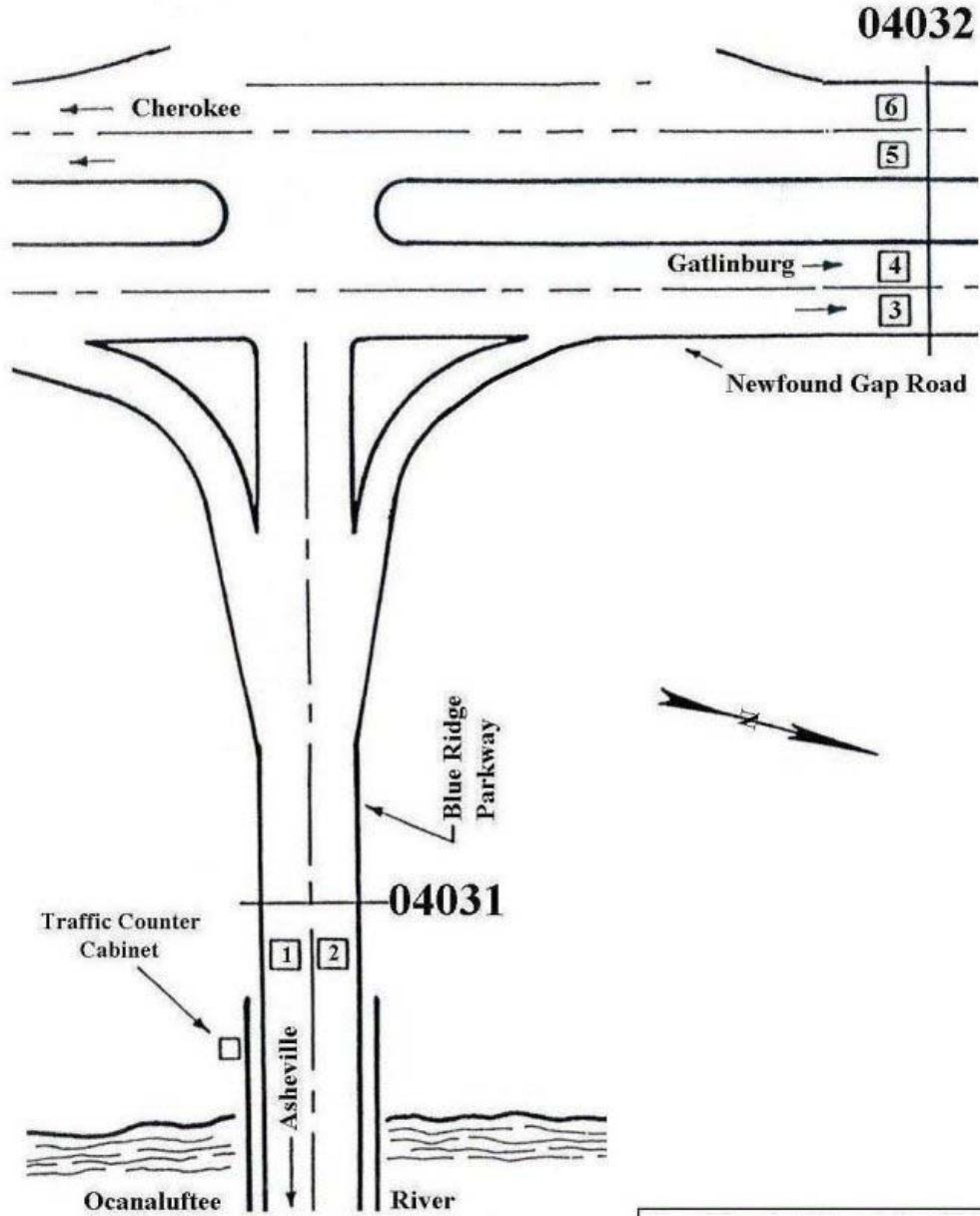






**BLUE RIDGE PARKWAY
STATION 1007
JUNCTION US 70 AT VINTON**





BLUE RIDGE PARKWAY
STATION 403
OCANALUFTEE