



Data and Information Quality in EPA's Enterprise Data Architecture

**2008 Conference on Managing
Environmental Quality Systems
Seattle, Washington**



Briefing by:
Kevin J. Kirby, US EPA
Enterprise Data Architect

April 24, 2008





United States
Environmental Protection
Agency

Presentation Overview



- Enterprise Architecture (EA) in Context
- Enterprise Architecture Reference Models
- The Data Management Strategy
- Addressing data quality Management
- Next Steps / Conclusion



Disclaimer:
The opinions expressed in this technical presentation are those of the author and do not necessarily reflect the views of the US EPA.



United States
Environmental Protection
Agency

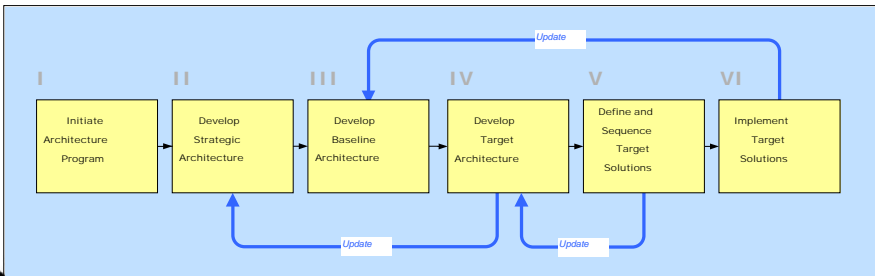
1

Enterprise Architecture: What is it?





- "A strategic information asset base which defines the mission;
- the information necessary to perform the mission;
- the technologies necessary to perform the mission;
- and the transitional processes for implementing new technologies in response to changing mission needs and includes:
- a baseline architecture; a target architecture; and a sequencing plan."

(Source: Electronic Government Act of 2002)





The flowchart shows a six-step process: I. Initiate Architecture Program, II. Develop Strategic Architecture, III. Develop Baseline Architecture, IV. Develop Target Architecture, V. Define and Sequence Target Solutions, and VI. Implement Target Solutions. Arrows indicate a sequential flow from I to VI. Three 'Update' arrows point from later stages back to earlier ones: from III to II, from IV to III, and from VI to IV.

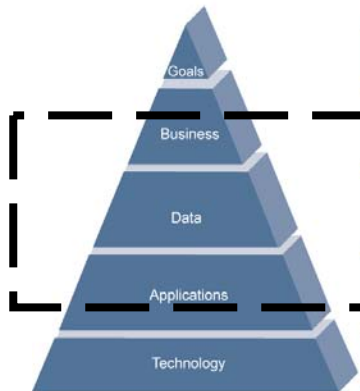


Environmental Protection Agency

2

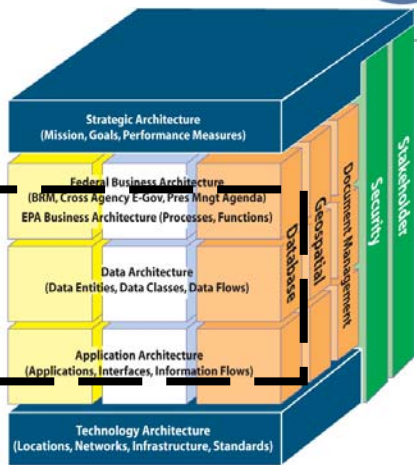
Enterprise Architecture Federal Conceptual Framework



Conceptual Framework

Goals
Business
Data
Applications
Technology




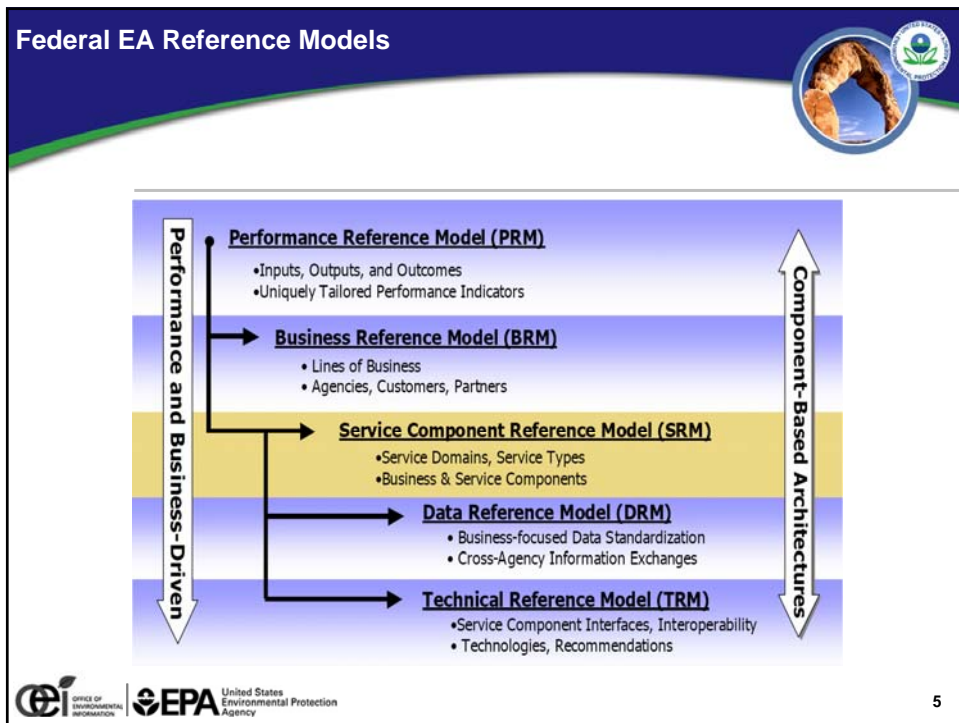
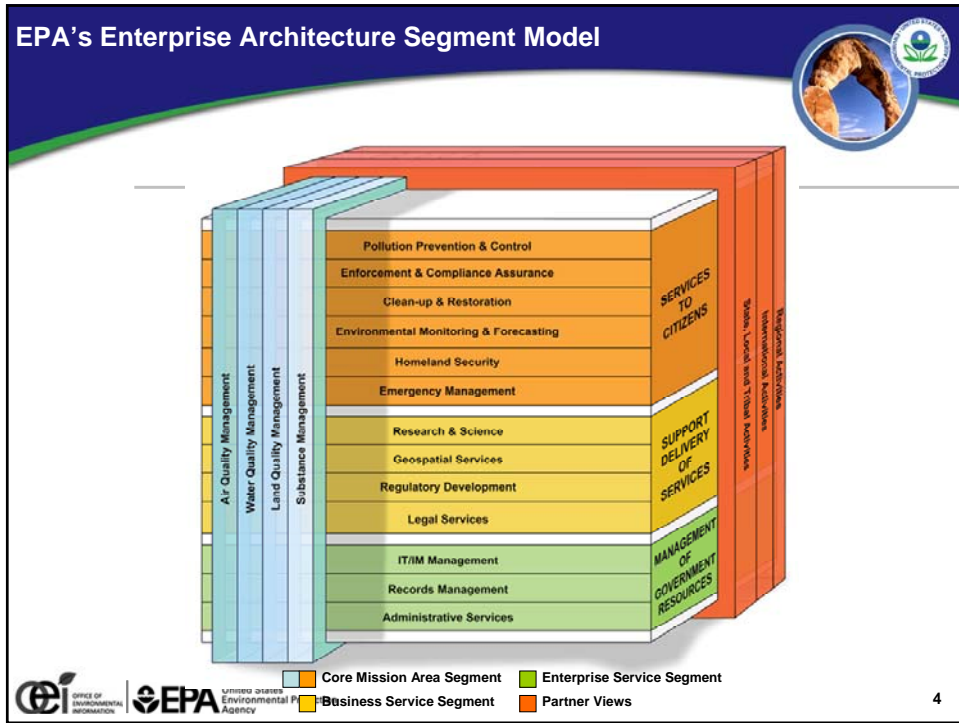
Business Domains

Strategic Architecture (Mission, Goals, Performance Measures)
Federal Business Architecture (BRM, Cross Agency E-Gov, Pres Mngt Agenda)
EPA Business Architecture (Processes, Functions)
Data Architecture (Data Entities, Data Classes, Data Flows)
Application Architecture (Applications, Interfaces, Information Flows)
Technology Architecture (Locations, Networks, Infrastructure, Standards)


Document Management
Geospatial Database
Security
Stakeholder

 Env. & Health	 Research & Devel.	 Admin. Systems
 Enterprise Wide	 Cross-cutting	


3



FEA Business Reference Model





Business Area


Line of Business

Sub-function

Business Area	LoB FEA BRM 2.0 as of May 2005	Sub-Function 1 FEA BRM 2.0 as of May 2005
Services to Citizens	108 - Environmental Management	- 023 Environmental Monitoring & Forecasting
		- 024 Environmental Remediation
		- 025 Pollution Prevention & Control




6

EPA's Business Reference Model





Business Area	LoB FEA BRM 2.0 as of May 2005	Sub-Function 1 FEA BRM 2.0 as of May 2005	Sub-Function 2 EPA BRM 4.6
Services to Citizens	108 - Environmental Management	- 023 Environmental Monitoring & Forecasting	01 Air Monitoring & Forecasting
			02 Water Monitoring & Forecasting
			03 Land Monitoring & Forecasting
		- 024 Environmental Remediation	01 Site & Area Evaluation & Cleanup
			01 Manage Air Quality
		- 025 Pollution Prevention & Control	02 Manage Water Quality
			03 Ensure Safe Drinking Water
			04 Manage Hazardous and Non-Hazardous Wastes
05 Manage Environmental Risk from Substances			
06 Prevent Pollution			
		07 Compliance & Enforcement	
		08 Environmental Stewardship	

Context for Data Architecture




- Most Environmental Data does not originate at EPA
- Increasing Demands for Access to Quality Information
- High Expectations to Know What Data EPA Has
- Movement across the Federal Government to Leverage Shared Services
- Federal Movement toward Outsourcing
- Alignment with the Federal Data Reference Model



  United States Environmental Protection Agency

8

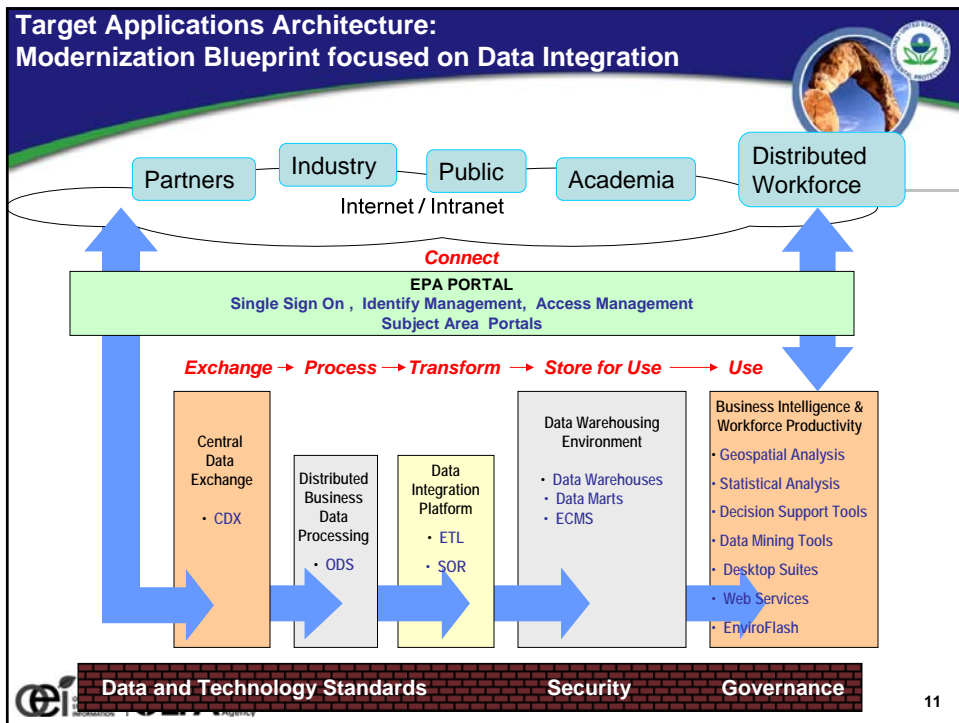
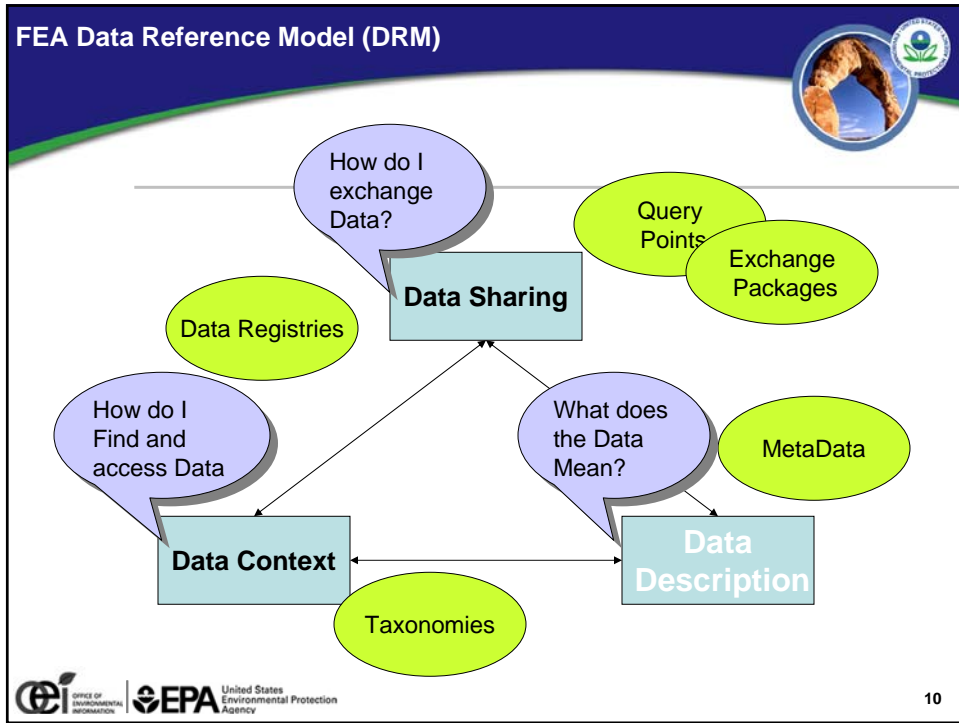
Data Architecture: Value Proposition

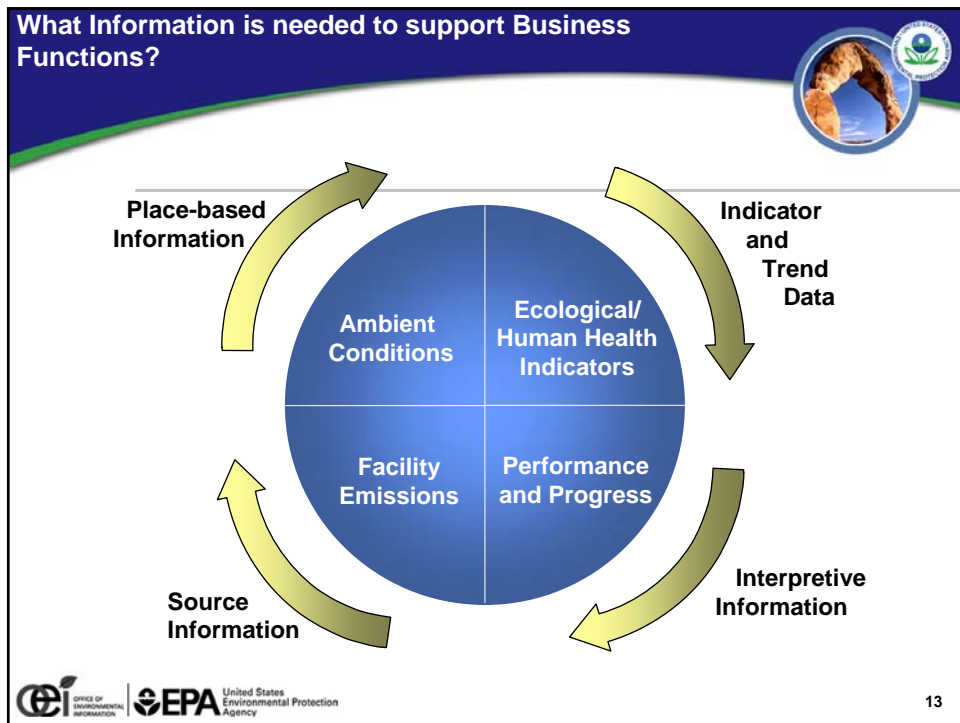
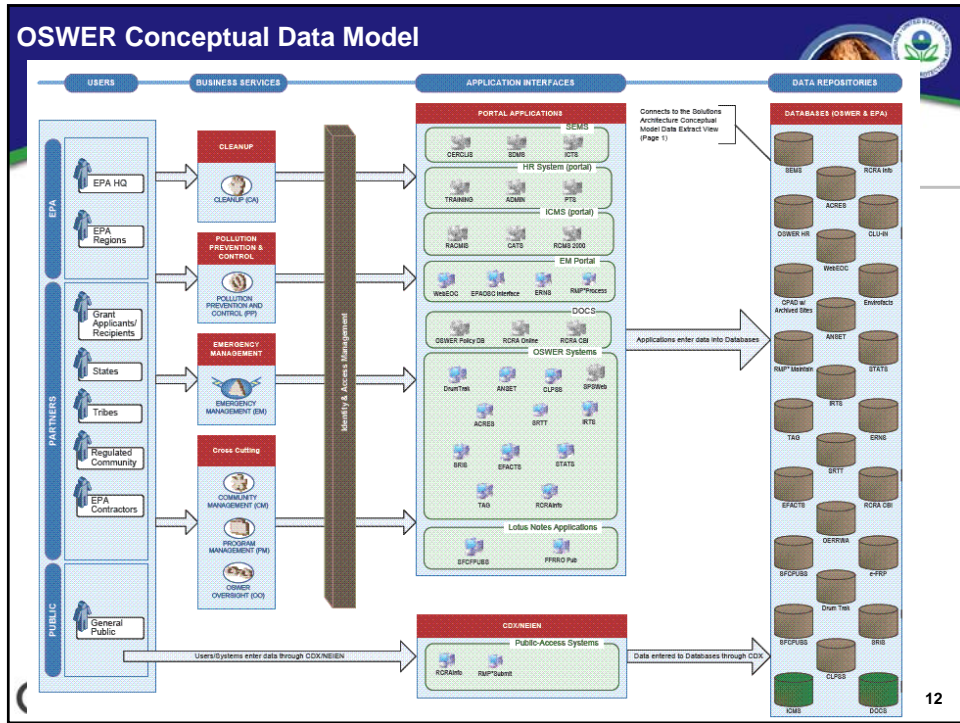


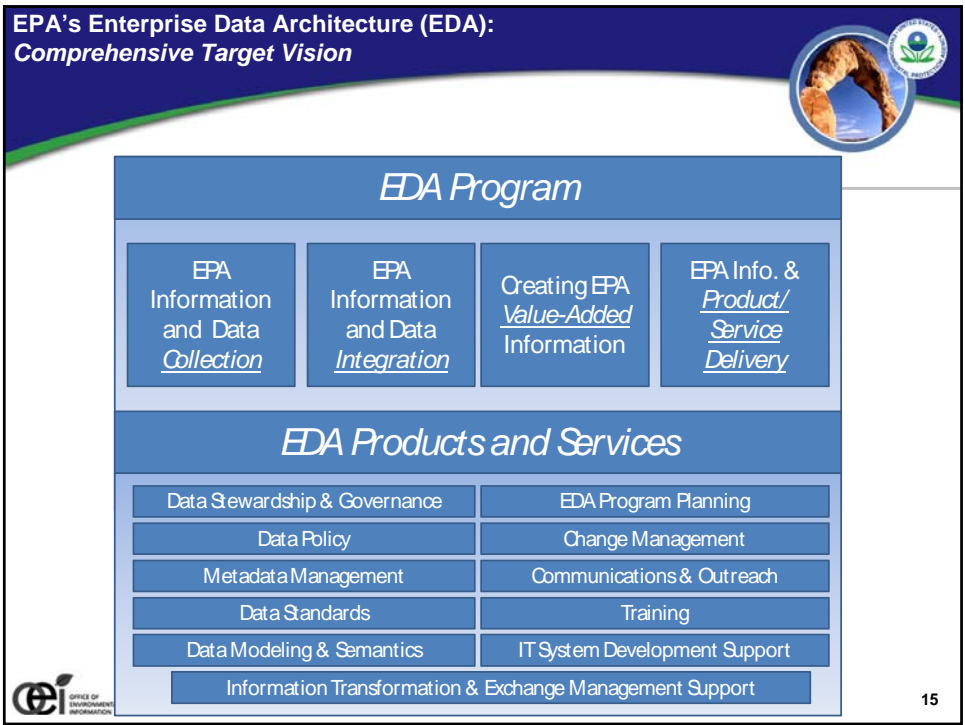
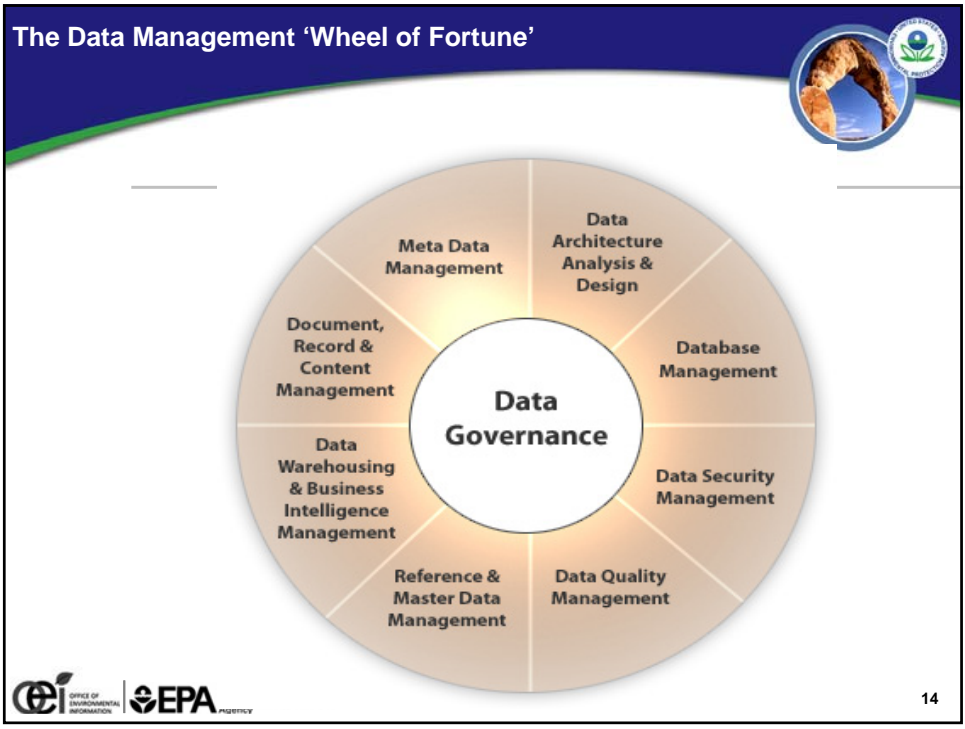
- EPA is committed to improving the understanding and use of its data assets
- To accomplish this, users and owners of data must have a common understanding of the meaning and representation of the data.
- The data must be described by documenting its characteristics or “metadata”
The metadata will describe:
 - Meaning of the data (also referred to as semantic metadata)
 - Representation of the data
 - Administrative information about the data (e.g., ownership, versioning, effective dates, status)

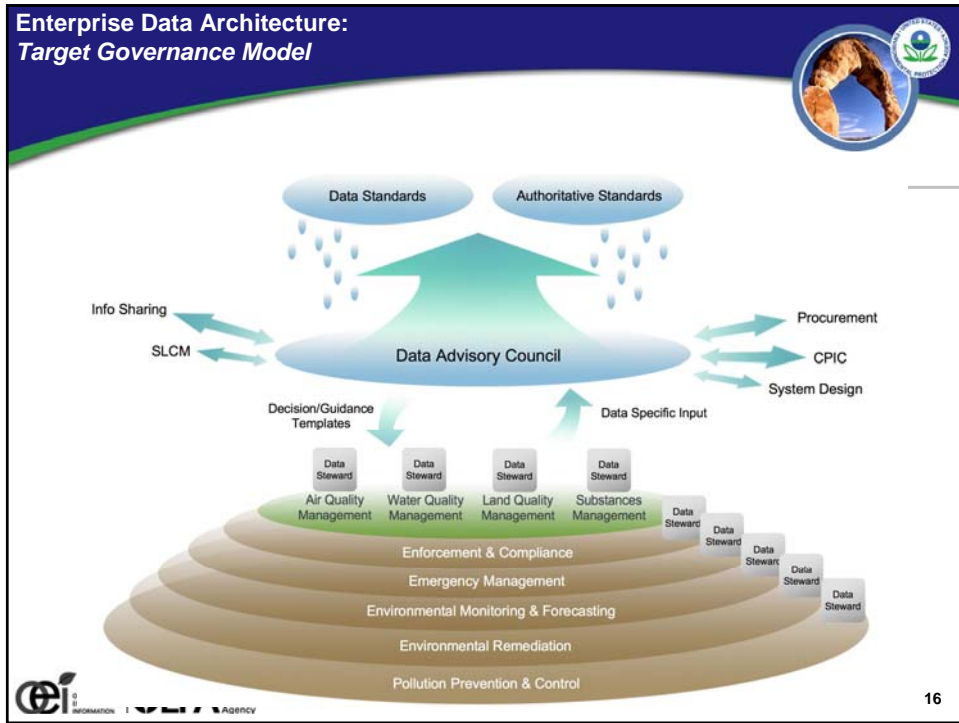
  United States Environmental Protection Agency

9









Parting Thoughts / Next Steps

- EPA has an Enterprise Architecture
- The Agency is developing a phased Data Management Framework
- Phase One includes:
 - Enterprise Data Architecture approach*
 - Metadata Management*
 - Data Quality Management*
 - Governance / Stewardship*
- Phase Two includes:
 - Data Security Management*
 - Master Data Management*
 - Data Warehouse Management*
- The success of the EDA hinges on integrated Data Quality procedures

OFFICE OF ENVIRONMENTAL INFORMATION | **EPA** United States Environmental Protection Agency

17

Kevin Kirby - BIO



- Kevin J. Kirby is the **Enterprise Data Architect** for the US Environmental Protection Agency, Office of Environmental Information Enterprise Architecture Team.
- His experiences in EPA have been centered in data and policy with an extensive background in the geospatial arena. Prior to joining the EPA Enterprise Architecture Team, Kevin was the IT Policy Team Lead and managed the Agency's Locational Reference Tables. He offers specific expertise in Geographic Information Systems (GIS) and watershed planning, has written the EPA's National Geospatial Data Policy, and is the Agency's representative to Federal (FGDC) National (ANSI) and International (ISO) geographic data standards organizations.
- Mr. Kirby received his academic training in Landscape Architecture, Natural Resources Planning, and a Graduate specialization in Environmental Sciences and Policy.