

Wisconsin Department of Transportation

# Traffic Incident Management Enhancement (TIME) Program

USDOT Research and Innovative Technology Administration (RITA)  
Talking Technology and Transportation Webinar  
September 11, 2008

Steven J. Cyra, PE, PTOE  
Fellow, HNTB Corporation



# Presentation

1. Wisconsin Traffic Incidents Defined
2. TIME Program Establishment
3. Solutions, Strategies, and Lessons Learned
4. The TIM-ETO Relationship

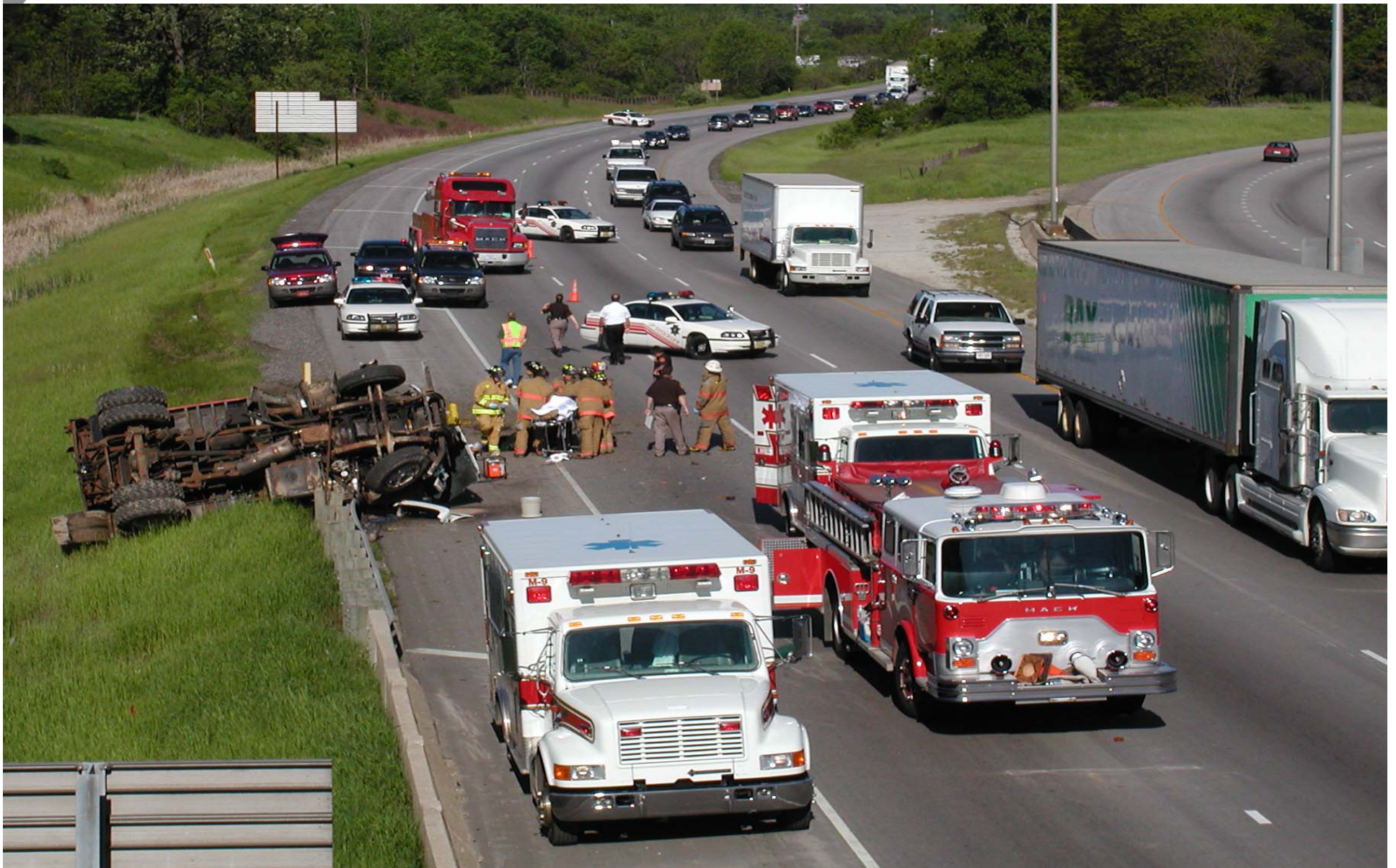


# Traffic Incidents ??

- Broadly defined, an incident is something that occurs in connection with something else.
- An incident can mean different things to different people, so it's especially important to define what is meant by a *traffic* incident.
- **A *traffic* incident is defined as any non-recurring event that reduces roadway capacity or abnormally increases demand.**



# Problem - Major





# Problem - Minor





# Problem – HAZMAT Spills





# HAZMAT Response



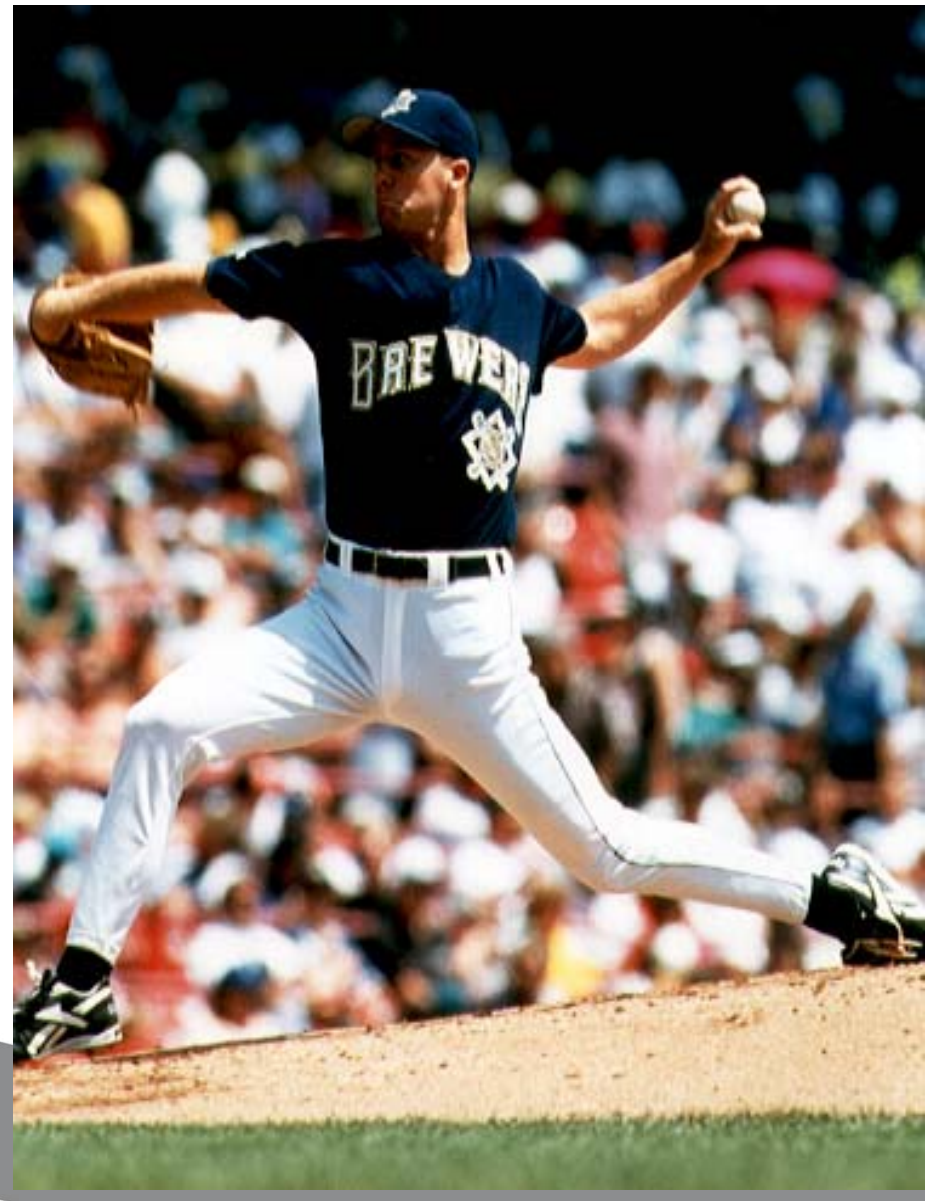


# Problem – Work Zones





# Problem – Planned Special Events



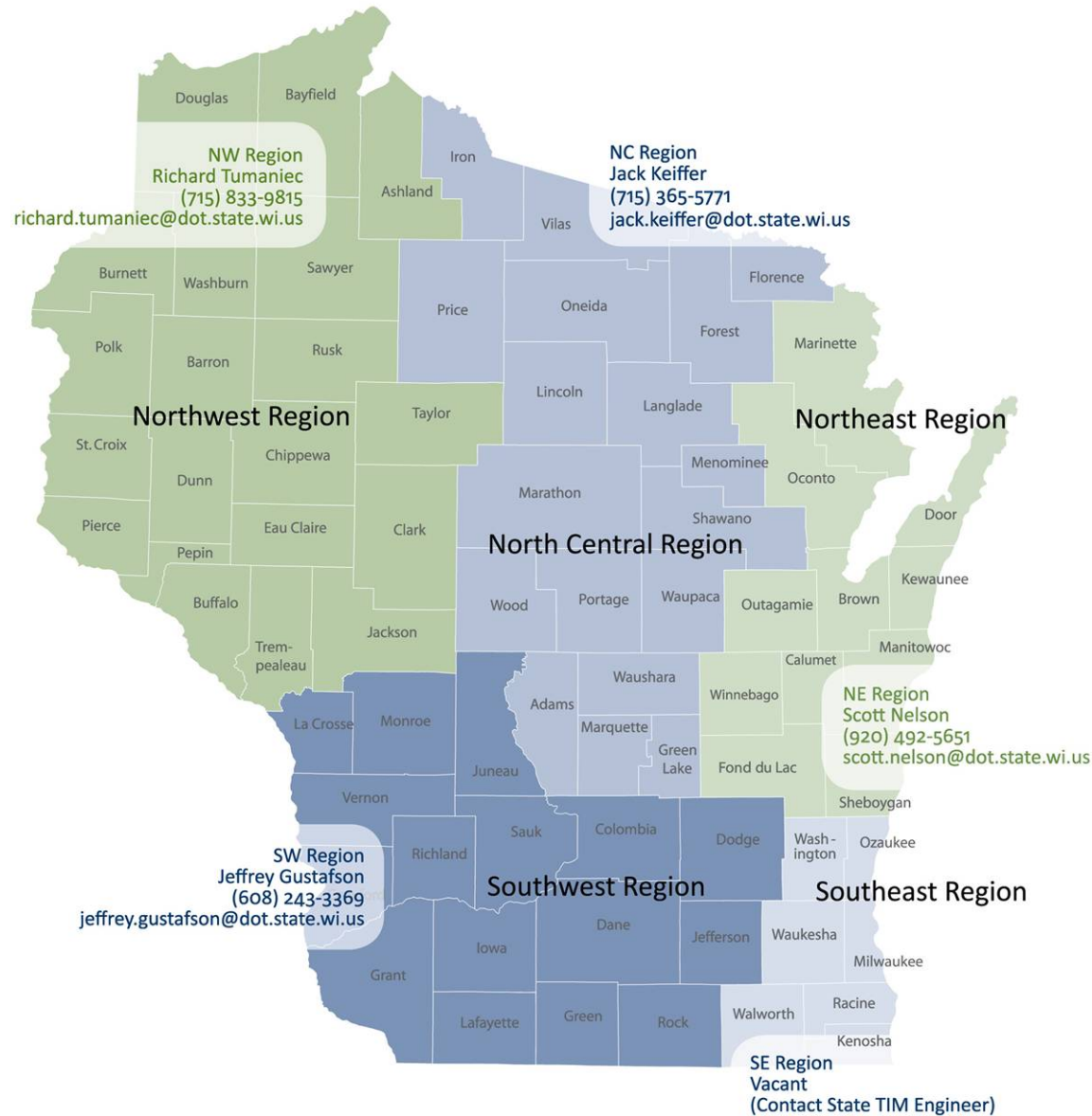
# TIME Program Establishment

- Initiated in 1995, an ITSA Best-Of Award winning multi-agency program dedicated to coordinating TIM through relationships and technology
- Direct participation from law enforcement, fire, emergency management, towing and recovery, and transportation agencies
- In 2006, expanded from a regional to a statewide program





# WisDOT TIME Organizational Structure / Standing Committee



# WisDOT TIME Program

## Solutions, Strategies, Lessons Learned





# Move Over Law

 **Move Over**  
or **Slow Down**

It's the law in Wisconsin



If you see  
a stopped  
emergency or  
maintenance  
vehicle with  
its emergency  
lights flashing,  
move over or  
slow down.



## Public Information Campaign

- Informational Brochure
- Newsletter / Magazine Articles
- Drivers Education Programs
- Stickers and Magnets
- Static Signs
- DMV Envelopes
- Posters

 **Move Over**  
or **Slow Down**  
For Stopped Emergency / Maintenance Vehicles



# Traffic Control & Scene Management

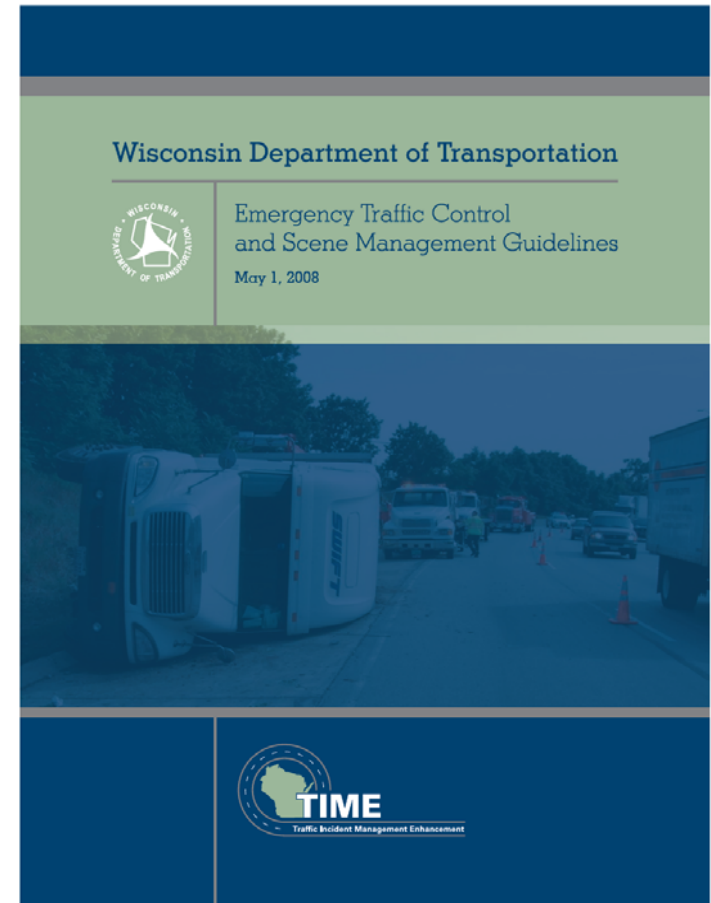
- Need to better “protect the protector”
- Goal to provide the **safest possible work environment** for all **Wisconsin incident responders**, while minimizing the risk for secondary crashes
- Guidelines established so incident responders within the State of Wisconsin have a **uniform approach** to emergency traffic control and scene management
- Consistent with MUTCD Chapter 6I

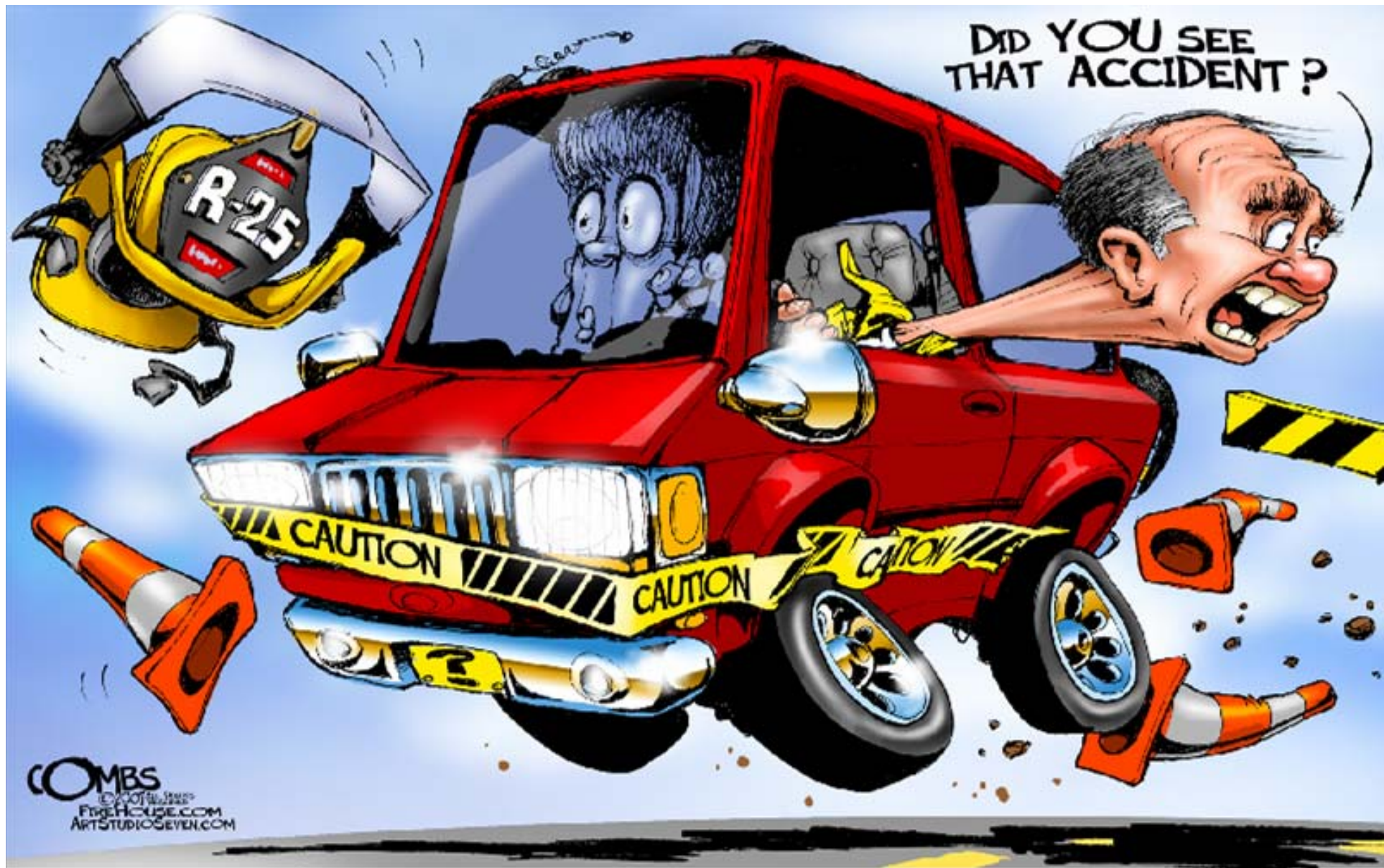




# Traffic Control & Scene Management

- Incident Response Priorities
- Responder Safety
- Responder Vehicles
- Traffic Incident Management Area Establishment
- Medical Helicopter Landing Zones
- Staging
- Debriefings





DID YOU SEE THAT ACCIDENT?

COMBS  
© 2011  
FISHHOUSE.COM  
ARTSTUDIOSEVEN.COM

LOOK OUT - BECAUSE THEY'RE NOT!



# Traffic Control & Scene Management

## Next Step – Training:

- Using a train-the-trainer approach
- Developed a training PowerPoint presentation to help ensure a consistent message is delivered statewide
- Developed a Quick Reference Visor Card
- Provided training at the 2008 Wisconsin State Patrol In-Service



# TIME Procurement List

- Purpose - to provide emergency responders a 'one stop shop' for purchasing TIM equipment such as:
  - cones, barricades, rollup signs, safety vests, etc.
- By going through the WisDOT procurement process the items available through the contract will typically be at a reduced rate
- Orders can be placed by any public agency on an as needed basis





# Freeway Service Teams



- Services currently provided in:
  - Dane Co
  - Milwaukee Co
  - Kenosha Co
  - Racine Co
  - Waukesha Co
  - Wausau Co
- Recently awarded a contract to Samaritania for statewide service
- Valuable mitigation tool for construction projects, special events, and winter weather



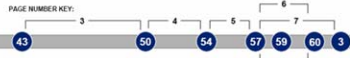
# Traffic Response Unit (TRU) Vehicle



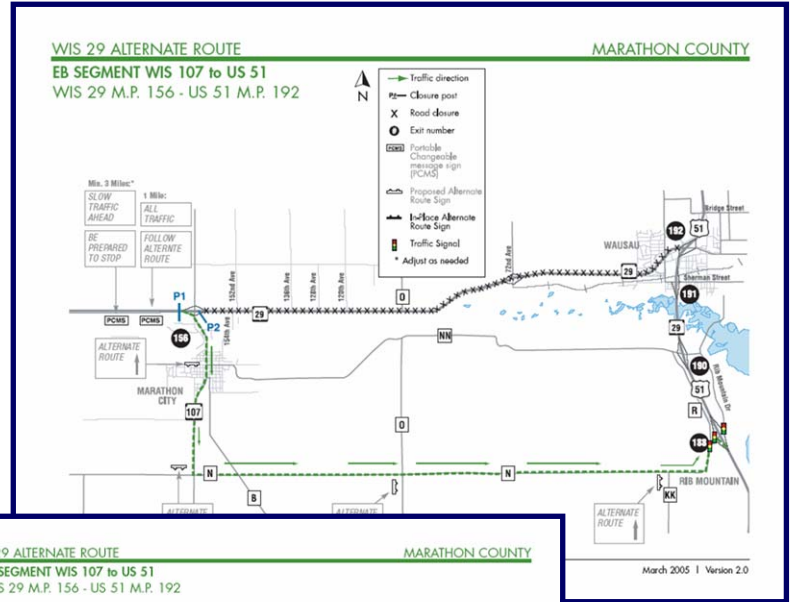
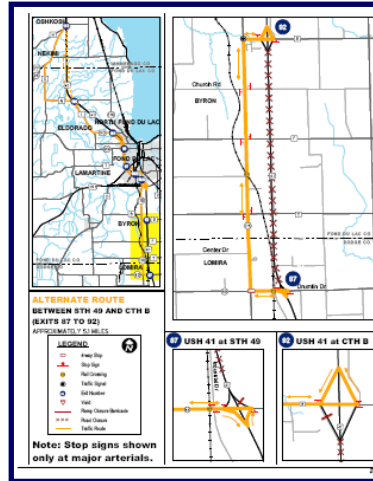


# Emergency Alternate Route Planning

## WAUKESHA COUNTY I-43 EMERGENCY ALTERNATE ROUTE OPERATIONS GUIDE



	I-43	Original	February 27, 2006
	ALTERNATE ROUTE	Revised	
	EXIT NUMBER	By	SJC
		Checked	MLH

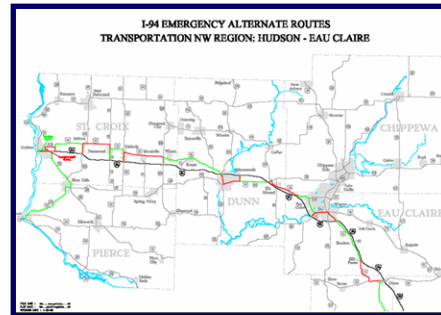


## WIS 29 ALTERNATE ROUTE EB SEGMENT WIS 107 to US 51 WIS 29 M.P. 156 - US 51 M.P. 192

- | NOTIFICATIONS  | ACTIONS   |
|--|---|
| <p><b>INCIDENT COMMANDER REQUEST DISPATCH CENTER TO:</b></p> <ul style="list-style-type: none"> <li>Contact the following agencies and personnel:                             <ul style="list-style-type: none"> <li>Wis State Patrol (715) 845-7857</li> <li>Marathon Co. Dispatch Center (715) 849-7791</li> </ul> </li> <li>Inform them of:                             <ul style="list-style-type: none"> <li>Incident location</li> <li>Emergency Alternate Route being implemented</li> <li>Any additional details</li> </ul> </li> <li>Inform local media outlets of freeway closure</li> </ul> | <p><b>WISCONSIN STATE PATROL</b></p> <ul style="list-style-type: none"> <li>Send appropriate TIME Area Broadcast</li> <li>EXIT 156 - P1: Closes EB WIS 29</li> <li>EXIT 156 - P2: Closes EB WIS 29 On-Ramp</li> </ul> <p><b>MARATHON CO. SHERIFF'S DEPT.</b></p> <ul style="list-style-type: none"> <li>Provides traffic control at the following intersections:                             <ul style="list-style-type: none"> <li>EXIT 156 - WIS 29 and WIS 107</li> <li>WIS 107 and CTH N</li> <li>EXIT 188 - US 51 and CTH N</li> <li>Along WIS 29 - side-streets immediately next to crash scene</li> </ul> </li> </ul> <p><b>MARATHON COUNTY HIGHWAY DEPT.</b></p> <ul style="list-style-type: none"> <li>Deploy and activates 2 PCMS on EB WIS 29</li> <li>Program PCMS as shown on map</li> </ul> |

March 2005 | Version 2.0

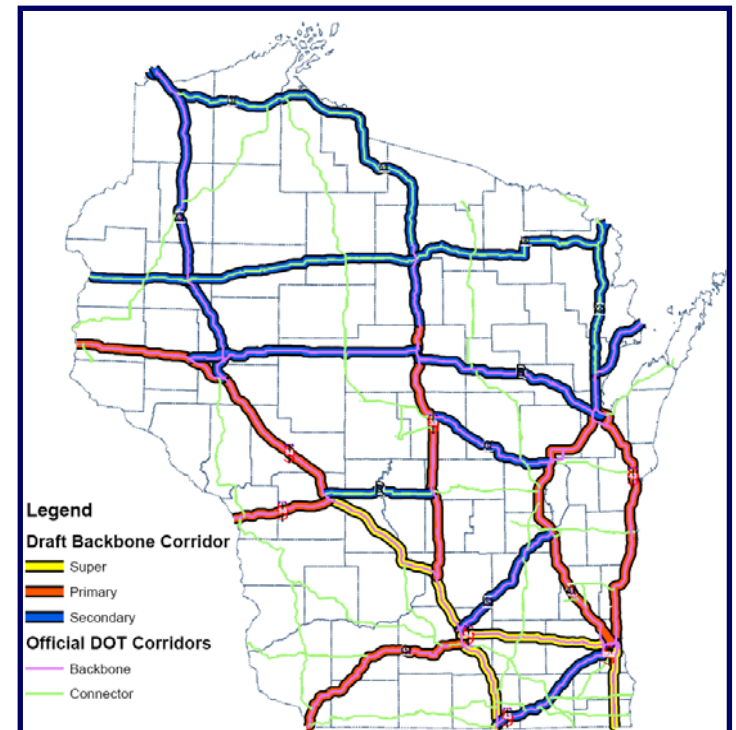
5



# Emergency Alternate Route Planning

## Statewide Consistency

- Guidelines for emergency alternate route identification
- Procedures for implementing emergency alternate routes
- Standard template for emergency alternate route guides





# Emergency Alternate Route Planning

- Valuable tool during major incidents and complete freeway closures
- STRAHNET routes



# Traffic Incident Management and Emergency Transportation Operations

“Preparedness for crisis is a byproduct of  
collaboration & cooperation in the routine.”





# WisDOT ETO – Evacuation Planning

- Late 2005 Gov. Doyle request review of State's Emergency Preparedness Plans
  - Need to develop/enhance evacuation plans for 12 largest cities in WI
- WisDOT role in evacuation clarified, ETO-EVAC task force formed
- TIME Program relationships leveraged to participate in Milwaukee UASI evacuation planning – enables “seat at the table”



# WisDOT ETO – Evacuation Planning

- TIME Program provided a “leg up” in performing evacuation planning in the Milwaukee region
- Products:
  - Evac Planning Process
  - ConOps
  - Mapping
  - Resource Inventories
  - Ramp Closure Procedures
  - STOC Op Guidelines
- Similar efforts in other 11 cities initiated



## Milwaukee Evacuation Ramp Closure Plan At A Glance I-43/94 Downtown to 27th St

### Legend

- 1C Passenger Car / Squad Car
- 1T Truck
- 1P Personnel Requirement
- No Closure Requirement

Note: Please refer to the WisDOT Freeway Ramp Closure Detail for interchange specific closure maps.

This information is intended only for the person or entity to which it is addressed and contains confidential and/or security-sensitive material. Any review, retransmission, dissemination, or other use, or taking of any action in reliance upon, this information by persons or entities other than the intended recipient is a federal crime under 18 U.S.C. SEC. 2517(4). This information is to be used only by individuals within your agency who are responsible for public safety and may not be distributed externally.

For comments/changes, please contact the Wisconsin Department of Transportation Statewide Traffic Operations Center (414) 227-2166.

Original: July 2007





# WisDOT ETO – Winter Weather Communications and Coordination Plan

- Purpose

- Ensure accurate, consistent, timely communication between WisDOT and counties
- Provide emergency communication protocols
- Eliminate/minimize confusion about road status and provide WisDOT OPA up-to-date information
- Allow WisDOT to assist in identifying the resources needed by counties

- In-place for winter 2007-2008



Wisconsin Department of Transportation (WisDOT)  
STATEWIDE TRAFFIC OPERATIONS CENTER (STOC)

## Winter Weather Traffic Alert and Press Release:

\_\_\_\_\_ County

Due to extreme winter weather conditions, effective \_\_\_\_\_ (time)  
on \_\_\_\_\_ (day/date), \_\_\_\_\_ County has deemed  
the interstate roadways impassable. The County will be maintaining

# WisDOT ETO Plan Development

- **ETO Program**
  - What WisDOT must do to be able to respond
  - Address Plan maintenance and sustainability
- **ETO Response**
  - How WisDOT responds to emergencies
  - Guidelines and procedures for action





# WisDOT ETO Plan Framework

**Emergency  
Transportation  
Operations (ETO)**

**ETO Program**  
ETO Plan Maintenance  
Training  
Asset Management  
Finance / Budget  
Contracting  
Performance Evaluation  
Vulnerability / Mitigation

**ETO Response**  
Threat Assessment  
Incident Notification  
ICS Response  
Public Information  
After-Action Reviews

# Thank You !!

**Steven J. Cyra, PE, PTOE**

**HNTB Corporation**

**[scyra@hntb.com](mailto:scyra@hntb.com)**

**(414) 359-2300**

