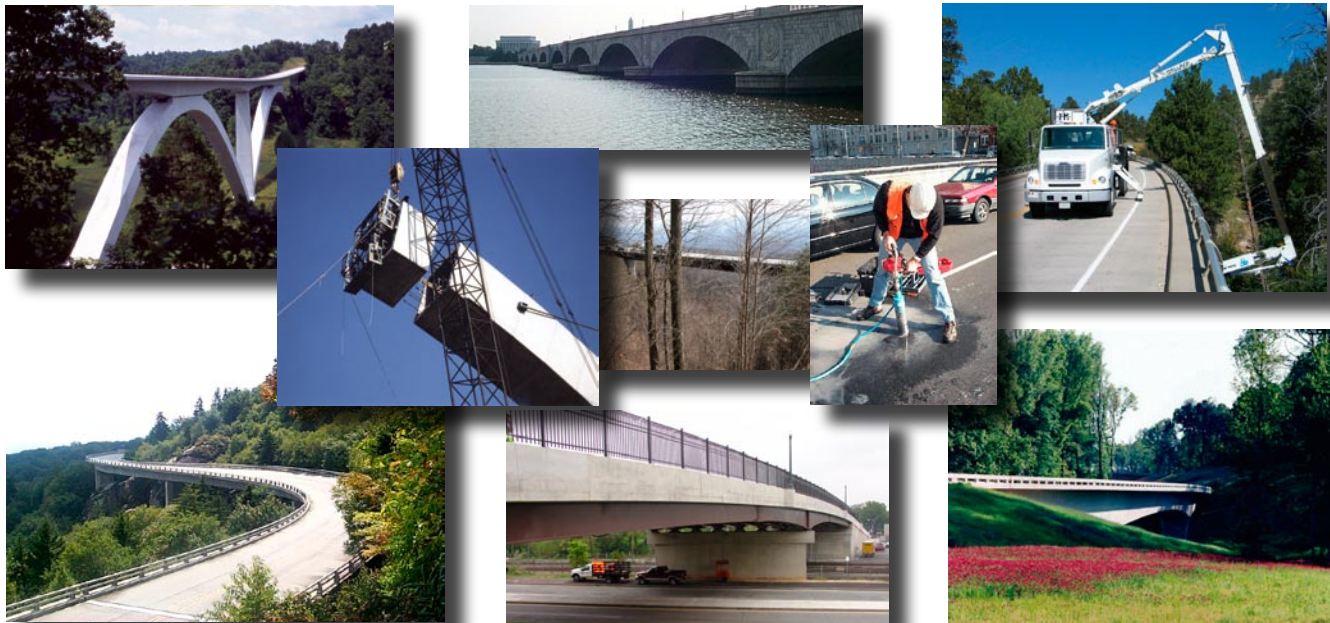




**Eastern Federal Lands Highway Division  
Federal Highway Administration  
U.S. Department of Transportation**

**— CAREER DEVELOPMENT OPPORTUNITIES —**

Civil/Structural Engineer (Bridge), GS-810-7/9/11/12  
Salary Range: \$42,290.00 – \$90,698.00



**Organizational Overview**

*Federal Lands Highway (FLH)*

Nearly one-third of the land area of the United States is Federally owned and administered. The Federal Government has a special interest in and responsibility for highways on or serving these Federal and Indian Lands. Congress has established various programs to fund the construction of highways on Federal and Indian lands. The Federal Highway Administration (FHWA) is authorized to assist its Federal Agency partners to perform engineering and related services for the development and improvement of these highways. The FHWA, through the Federal Lands Highway office is responsible for two of these programs: Federal Lands Highway Program (FLHP) and the Emergency Relief on Federally-owned Roads Program.

*Federal Lands Highway Program (FLHP)*

The FLHP is administered in cooperation with our Federal Land management partners. Our partners include the National Park Service (NPS), U.S. Forest Service, U.S. Fish and Wildlife Service, and other land management agencies who depend on FHWA for all, or a portion of, their engineering, design and contract administration needs. The FLHP includes four funding categories: the Park Roads and Parkways Program, the Public Lands Highway Program (which includes the Forest Highway and Public Lands Discretionary Programs), the Refuge Roads Program, and the Indian Reservation Roads Program. These partners rely on the FHWA for all, or a portion of, their

planning, engineering, design, and contract administration needs. Other Federal agencies and State Departments of Transportation also request our services on a periodic basis. The FHWA and its Federal partners are responsible for constructing some of the most beautiful and scenic highways in America through the FLHP.

### *Eastern Federal Lands Highway Division (EFLHD)*

Based outside Washington, D.C., in Sterling, Virginia, the EFLHD is one of three field offices responsible for the Federal Lands Highway Program. The EFLHD provides our partners with transportation program administration and engineering services for planning, environmental compliance, design, contract administration, construction, and rehabilitation of highways and bridges on or providing access to federally-owned lands serving 31 Eastern States, Puerto Rico, and the U.S. Virgin Islands.

### *FLH Bridge Office*

The FLH Bridge Office (FLHBO) supports the administration of the nationwide FLH Program by providing design, construction support, bridge inspection, and bridge management services for bridges located on federally owned lands in all 50 states, Puerto Rico, and the U.S. Virgin Islands.

The FLH Bridge Engineer is directly responsible for the management of the FLHBO, which is comprised of three teams: two Bridge Design Teams, with staff located in Sterling, VA and Lakewood, CO and the Bridge Inspection and Management Program Teams, located in Sterling, VA.

### *FLH Bridge Design Program*

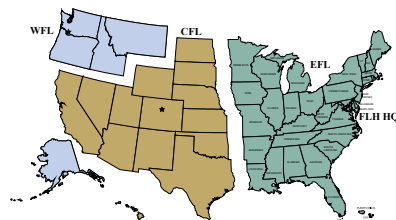
The Bridge Design Team is responsible for the FLH Bridge Design Program, which includes direct or oversight of the development of plans, specifications, and cost estimates for the construction or rehabilitation of bridges and other major highway structures, such as retaining walls, tunnels, and large engineered culverts, on federally owned lands. The team also provides training, technical assistance and leadership in support of other federal agencies, deploys technology in support of the FHWA Structures Strategic Plan, directly participates in AASHTO specification development as the FHWA Ex-officio member to several AASHTO Technical Committees, and develops innovative solutions to funding and related issues for bridge projects.

### *FLH Bridge Inspection Program*

The Bridge Inspection Team is responsible for the FLH Bridge Inspection Program, which includes direct or oversight of performance of bridge safety inspection and structural rating of approximately 2,100 structures owned by the National Park Service (NPS) as well as other federal agencies, in accordance with the National Bridge Inspection Standards. The team provides technical leadership and support to the FHWA and partners through technology advancement, bridge inspection technical assistance, and bridge inspection program policy and guidance.

### *FLH Bridge Management Program*

The Bridge Management Team is responsible for the management of the NPS's structures inventory and evaluation of data contained therein thus providing the Federal Lands Highway and NPS planners with an annual list of structure rehabilitation and repair priorities. The team provides technical leadership and support to the FHWA and partners through technology advancement, data management, system preservation technology advancement, and bridge management program policy and guidance.



To apply visit <http://www.fhwa.dot.gov>

For specific questions, please contact the

*EFLHD Professional Development Office via e-mail: [hr.eflhd@fhwa.dot.gov](mailto:hr.eflhd@fhwa.dot.gov)*