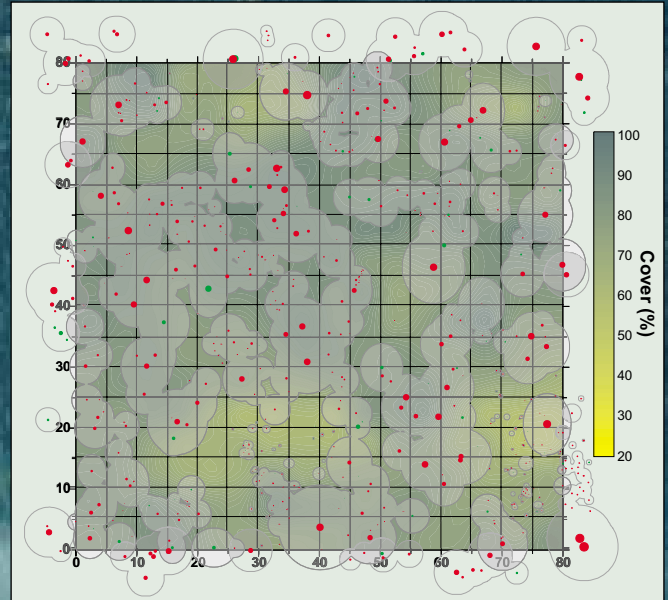


Mineral King Risk Reduction Project



Monitoring, Inventory, and Research

1997 Annual Report

June 1998

Note: The 1997 Annual Report on Research, Monitoring, and Inventory for the Mineral King Risk Reduction Project is the third annual report produced for the burn project. The earlier reports contain some introductory and additional background material that has not been duplicated in this report. Copies of all the reports are being made available by web browser over the Internet. Full copies of the 1995 and 1996 report can be downloaded in Adobe Acrobat PDF format from the **Fire Information Cache** on the Sequoia and Kings Canyon National Parks web site at www.nps.gov/seki/fire. PDF files require the Adobe Acrobat reader which can be downloaded free from Adobe www.adobe.com. If you do not have Internet access and would like to obtain one of the earlier reports from 1995 or 1996 contact Tony Caprio at Sequoia and Kings Canyon National Parks, Division of Science and Natural Resources Management.

Cover Caption: Aerial view of a portion of the Atwell segment (segment #5) burning during the fall of 1995 with the Mineral Lakes in the near distance and Great Western Divide in the far distance. The inset is a diagram of tree diameters and tree canopy size in one of the Pitcher Plots. Yellow and green background shading in the diagram shows canopy density measured at DBH height. The darker the green shading the greater the canopy density.