

# News

United States  
Department  
of Labor



Bureau of Labor Statistics

Washington, D.C. 20212

Technical Contact:

(202) 691-6199 ocltinfo@bls.gov

Media Contact:

(202) 691-5902

Internet address:

<http://www.bls.gov/ncs/ect/home.htm>

USDL: 05-2086

TRANSMISSION OF MATERIAL  
IN THIS RELEASE IS EMBARGOED  
UNTIL 8:30 A.M. (EDT),  
FRIDAY, OCTOBER 28, 2005

## EMPLOYMENT COST INDEX—SEPTEMBER 2005

Total compensation costs for civilian workers increased 0.8 percent from June to September 2005, seasonally adjusted, virtually unchanged from the 0.7 percent gain from March to June, the Bureau of Labor Statistics of the U.S. Department of Labor reported today. Benefit costs between June and September rose 1.3 percent and continued to outpace the gain in wages and salaries for civilian workers, 0.6 percent. The Employment Cost Index (ECI), a component of the National Compensation Survey, measures quarterly changes in compensation costs, which include wages, salaries, and employer costs for employee benefits for civilian workers (nonfarm private and State and local government).

Increases in benefit costs accounted for over 40 percent of the rise in compensation costs for civilian workers from June to September 2005. Among private industry workers, benefit costs contributed one-third of the compensation gains during the quarter. Among State and local government workers, benefit costs comprised over one-half of compensation cost gains during the June to September period. Health insurance costs and defined benefit contributions each represented approximately one-fifth of the gain in compensation costs for State and local government workers from June to September 2005.

Hurricanes Katrina and Rita struck the Gulf Coast during the reference period for the ECI, affecting the lives of millions of Americans and resulting in significant disruptions in business both inside and outside of the impacted areas. Survey response rates in the affected areas were lower than usual, but the data from nonresponding establishments account for less than 1 percent of the overall sample. There does not appear to have been any tangible effects on the estimates.

### NOTE

Effective with this release, a new table with accompanying descriptive information has been added. Table D shows 12-month percent change in the Employment Cost Index (ECI) in inflation-adjusted constant dollars. While BLS has long made these data publicly available, it is now including them in the release as a service to data users.

The ECI will convert to the 2002 North American Industry Classification System and the 2000 Standard Occupational Classification System with the release of the March 2006 estimates. In addition, several computational changes will be introduced, including rebasing all series to December 2005=100 from June 1989=100, as well as the introduction of new employment weights and seasonal adjustment factors. See page 5 for details.

### Quarterly changes, seasonally adjusted

Compensation costs for the private sector rose 0.8 percent from June to September 2005, compared with a gain of 0.6 percent in the prior quarter. For State and local government workers, compensation costs rose 1.1 percent in September, greater than the gain of 0.7 percent for the quarter ended in June. (See tables A and 1.)

Benefit costs rose 1.3 percent for both civilian and private industry workers in the September 2005 quarter, following more modest gains of 0.8 percent for both sectors in the June quarter. Benefit costs for State and local government workers increased 1.7 percent in the September quarter, compared with a 1.2 percent gain in the prior quarter.

Wages and salaries for both civilian and private industry workers increased 0.6 percent during the September 2005 quarter, the same increases as in the previous two quarters. Wages and salaries in State and local government advanced 0.7 percent during the June to September 2005 period, following an increase of 0.5 percent in the prior quarter.

Table A. 3-month percent changes in Employment Cost Index, seasonally adjusted

Compensation Component	Dec. 2003	Mar. 2004	June 2004	Sep. 2004	Dec. 2004	Mar. 2005	June 2005	Sep. 2005
<b>Civilian workers</b>								
Compensation costs	0.8	1.1	0.9	0.9	0.8	0.7	0.7	0.8
Wages and salaries	0.5	0.6	0.6	0.7	0.5	0.6	0.6	0.6
Benefit costs	1.5	2.2	1.6	1.4	1.6	1.2	0.8	1.3
<b>Private industry</b>								
Compensation costs	0.8	1.1	0.9	1.0	0.8	0.6	0.6	0.8
Wages and salaries	0.6	0.6	0.6	0.7	0.4	0.6	0.6	0.6
Benefit costs	1.5	2.2	1.7	1.3	1.6	1.1	0.8	1.3
<b>State and local government</b>								
Compensation costs	0.7	0.9	0.9	0.8	0.9	1.0	0.7	1.1
Wages and salaries	0.5	0.6	0.5	0.4	0.6	0.8	0.5	0.7
Benefit costs	1.3	1.6	1.8	1.6	1.5	1.5	1.2	1.7

### Over-the-year changes, not seasonally adjusted

Annual compensation cost increases moderated for civilian and private industry workers for the year ended September 2005 compared with over-the-year increases for September 2004. Compensation costs for civilian workers increased 3.1 percent for the year ended September 2005, lower than the 3.8 percent over-the-year increase for September 2004. Compensation costs in private industry rose 3.0 percent in the year ended September 2005, slowing from a 3.7 percent increase in September 2004. Compensation costs increased 3.7 percent for State and local governments for the year ended September 2005, compared with an over-the-year gain of 3.4 percent in September 2004. (See tables B, 2, and 3.)

Table B. 12-month percent changes in Employment Cost Index, not seasonally adjusted

Compensation Component	Sep. 2000	Sep. 2001	Sep. 2002	Sep. 2003	Sep. 2004	Sep. 2005
<b>Civilian workers</b>						
Compensation costs	4.3	4.1	3.7	3.9	3.8	3.1
Wages and salaries	4.0	3.6	3.2	2.9	2.4	2.3
Benefit costs	5.3	5.1	4.9	6.5	6.8	5.1
<b>Private industry</b>						
Compensation costs	4.6	4.0	3.7	4.0	3.7	3.0
Wages and salaries	4.1	3.6	3.2	3.0	2.6	2.2
Benefit costs	6.0	4.9	4.8	6.5	6.8	4.8
<b>State and local government</b>						
Compensation costs	3.3	4.4	3.8	3.6	3.4	3.7
Wages and salaries	3.5	3.9	3.1	2.3	2.0	2.7
Benefit costs	2.8	5.6	5.4	6.7	6.4	6.1

The components of compensation showed differences in the rate of change. While increases in wages and salaries continued at a moderate pace, the sharp increases in benefit costs over the past several years continued to moderate. For civilian workers, wages and salaries rose 2.3 percent in the year ended September 2005, nearly identical with a gain of 2.4 percent in September 2004. Benefit costs gained 5.1 percent for civilian workers for the period ended September 2005, slowing sharply from an increase of 6.8 percent for the year ended September 2004. (See tables B, 5, 6, and 8.)

### Nonfarm private industry

For the year ended September 2005, compensation costs in private industry increased 3.7 percent for goods-producing industries, compared with an increase of 4.6 percent for the year ended September 2004. The rise in compensation costs for manufacturing moderated for the year ending September 2005, advancing 3.3 percent compared with the 5.0 percent gain in September 2004. Compensation costs for construction rose 3.5 percent in September 2005, compared with a 2.9 percent rise in September 2004. (See table 3.)

The over-the-year increase in compensation for service-producing industries was 2.6 percent, declining from the 3.5 percent gain for the year ended September 2004. Among service-producing industries, compensation gains in transportation and public utilities moderated for the year ending September 2005, rising 2.1 percent compared with an increase of 4.3 percent in September 2004. (See table 3.)

Over-the-year compensation cost increases were 3.2 percent for white-collar occupations, 2.7 percent for blue-collar occupations, and 2.4 percent for service occupations for the year ended September 2005. Among white-collar occupational groups, compensation cost changes ranged from 2.3 percent for sales workers to 3.5 percent for professional specialty and technical employees. Among blue-collar occupational groups, compensation cost increases ranged from 1.6 percent for machine operators, assemblers, and inspectors to 3.2 percent for precision production, craft, and repair occupations and transportation and material moving occupations. (See table 3.)

Compensation costs for union workers advanced 2.9 percent over the year ended September 2005, falling sharply from the 5.8 percent gain for the year ended September 2004. For nonunion workers, compensation costs rose 3.0 percent for the year ended September 2005, compared with a gain of 3.4 percent for September 2004. Benefit costs for union workers rose 4.1 percent for the year ended September 2005, decelerating sharply compared with the gain of 10.6 percent in September 2004. Benefit costs for nonunion workers advanced 5.0 percent over the year ended September 2005, compared with an increase of 5.9 percent in September 2004. Wages and salaries for union workers rose 2.1 percent for the 12 months ended in September 2005, nearly identical to the over-the-year increase of 2.2 percent for nonunion workers. (See tables C, 4, 7, and 8.)

Among blue-collar workers, compensation costs advanced 3.0 percent for union workers, compared with the gain of 2.6 percent for nonunion workers for the 12 months ended in September 2005. In manufacturing industries, compensation cost gains for union workers decelerated sharply, rising 2.4 percent for the year ended September 2005, significantly less than the 8.1 percent increase for the year-ended September 2004. For nonunion workers in manufacturing, compensation costs rose 3.6 percent for the year ended September 2005, compared with an over-the-year gain of 4.1 percent in September 2004. (See table 4.)

Table C. 12-month percent changes in Employment Cost Index, private industry workers, not seasonally adjusted

Compensation Component	Sep. 2000	Sep. 2001	Sep. 2002	Sep. 2003	Sep. 2004	Sep. 2005
<b>Union workers</b>						
Compensation costs	4.2	3.4	4.7	4.8	5.8	2.9
Wages and salaries	3.2	3.6	4.3	2.6	3.0	2.1
Benefit costs	6.1	2.9	5.5	8.5	10.6	4.1
<b>Nonunion workers</b>						
Compensation costs	4.7	4.1	3.5	3.8	3.4	3.0
Wages and salaries	4.3	3.6	3.1	3.1	2.5	2.2
Benefit costs	5.9	5.4	4.6	5.9	5.9	5.0

Among the four geographic regions, increases in compensation costs ranged from 2.7 percent in the South to 3.3 percent in the West for the year ended September 2005. Compensation costs rose 3.0 percent in the Northeast and Midwest. In the West, gains in wages and salaries slowed to 1.8 percent for the year ended September 2005, compared with the 2.7 percent gain for the year ended September 2004. Among the remaining regions, wages and salaries rose 2.1 percent in the South, 2.2 percent in the Northeast, and 2.6 percent in the Midwest for the year ended September 2005. (See tables 4 and 7.)

### State and local government

Wages and salaries for State and local government workers rose 2.7 percent in the year ended September 2005, greater than the gain of 2.0 percent for September 2004. Benefit costs rose 6.1 percent for the year ended September 2005, compared with the gain of 6.4 percent for the year ended September 2004. (See tables B, 5, and 8.)

For the year ended September 2005, compensation costs increased 3.6 percent for educational services, outpacing the 2.7 percent increase for the year ended September 2004. Compensation costs for colleges and universities rose 3.5 percent, a significant increase from the 1.9 percent gain for the year ended September 2004. Among occupational groups, compensation costs of service workers rose 4.6 percent for the year ended September 2005, compared with gains of 4.4 percent for blue-collar workers and 3.5 percent for white-collar workers. (See table 2.)

### Annual changes, constant dollars, not seasonally adjusted

Quarterly and annual changes are computed in terms of June 1989 dollars to give an approximate measure of changes in compensation costs after adjustment for the changes over the same time in the price of consumer goods and services. These estimates, in "constant dollars," showed annual compensation costs for civilian workers decreased 1.5 percent for the year ended September 2005, compared with a 1.2 percent over-the-year increase for September 2004. Compensation costs in private industry declined 1.6 percent in the year ended September 2005, compared with a 1.2 percent advance in September 2004. Compensation costs decreased 0.9 percent for State and local government for the year ended September 2005, compared with an over-the-year gain of 0.8 percent in September 2004. These inflation-adjusted ECI series were derived using the Consumer Price Index for All Urban Consumers (CPI-U), U.S. City Average All Items. (See table D and the Explanatory Note for more details.)

Table D. 12-month percent changes in Employment Cost Index, constant dollars, not seasonally adjusted

Compensation Component	Sep. 2000	Sep. 2001	Sep. 2002	Sep. 2003	Sep. 2004	Sep. 2005
<b>Civilian workers</b>						
Compensation costs	0.8	1.4	2.1	1.5	1.2	-1.5
Wages and salaries	0.6	0.9	1.7	0.6	-0.1	-2.3
Benefit costs	1.8	2.4	3.3	4.1	4.1	0.4
<b>Private industry</b>						
Compensation costs	1.1	1.3	2.1	1.7	1.2	-1.6
Wages and salaries	0.6	0.9	1.7	0.7	0.1	-2.4
Benefit costs	2.5	2.2	3.2	4.1	4.2	0.1
<b>State and local government</b>						
Compensation costs	-0.2	1.7	2.2	1.3	0.8	-0.9
Wages and salaries	0.1	1.3	1.5	0.0	-0.5	-1.9
Benefit costs	-0.7	2.8	3.8	4.3	3.8	1.4

---

NOTE:

The ECI for December 2005 is scheduled to be released Tuesday, January 31, 2006, at 8:30 a.m. (EST).

Beginning with the release of the March 2006 estimates, the ECI will publish industry categories based on the 2002 North American Industry Classification System (NAICS) and classify jobs into occupational categories according to the 2000 Standard Occupational Classification (SOC) Manual. These systems will replace the 1987 Standard Industrial Classification (SIC) Manual and the Occupational Classification System (OCS) currently being used in the ECI. Broad categories, such as civilian workers and private industry workers, are comparable for both the old and new classification systems; however, some detailed occupational and industry classifications (even with the same title) may not be comparable. Some new series will be introduced while others will be dropped. For more detailed information on NAICS and SOC, including background and definitions, see the BLS websites: <http://www.bls.gov/bls/naics.htm> and <http://www.bls.gov/soc/home.htm>.

In addition, several computational changes will be introduced, including rebasing all series to December 2005=100 from June 1989=100, and the initiation of new employment weights and seasonal adjustment factors. At the same time, an improved process for imputing costs for missing values will be introduced.

ECI data are available on the Compensation Cost Trends page at <http://www.bls.gov/ncs/ect/home.htm>. To access data using Anonymous FTP, use the Internet address <ftp://ftp.bls.gov>.

For technical assistance in using the BLS Internet site, send e-mail to [webmaster@bls.gov](mailto:webmaster@bls.gov). For ECI data requests, send e-mail to [ocltinfo@bls.gov](mailto:ocltinfo@bls.gov).

The ECI news release is available through an e-mail subscription service. See the subscription link on <http://www.bls.gov/ncs/ect/home.htm> or <http://www.bls.gov/bls/newsrels.htm>.

Information in this release will be made available to sensory impaired individuals upon request. Voice phone: (202) 691-5200; Federal Relay Service Number: 1-800-877-8339.

---

Chart A. Changes in wages and salaries and in benefit costs, private industry, 1980-2005

12-month percent change

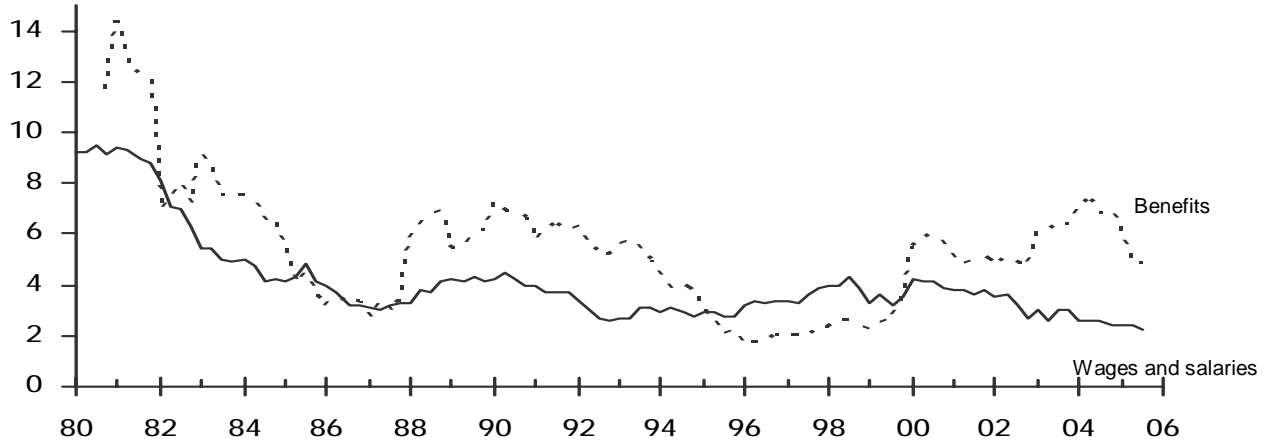


Chart B. Changes in wages and salaries, civilian workers, seasonally adjusted and not seasonally adjusted, 1981-2005

3-month percent change

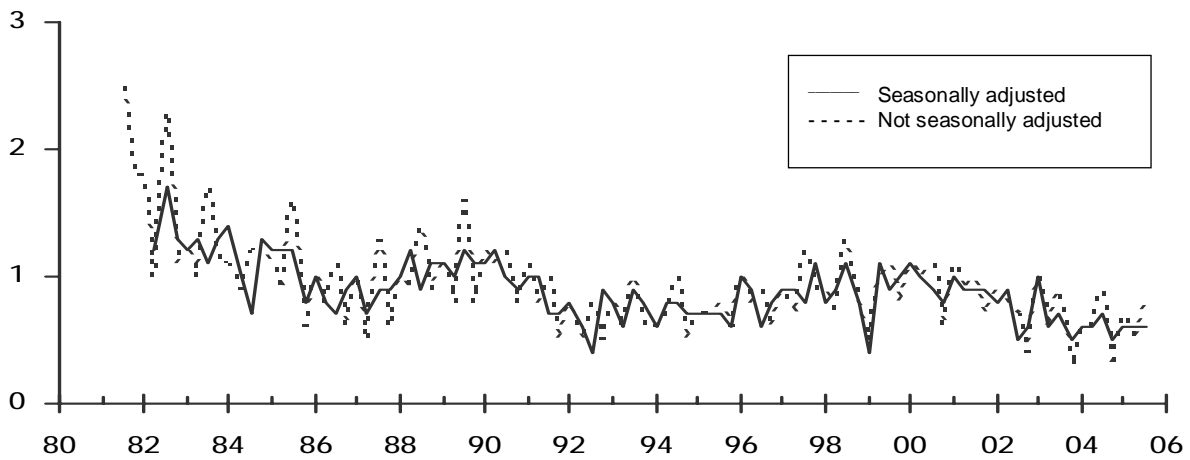
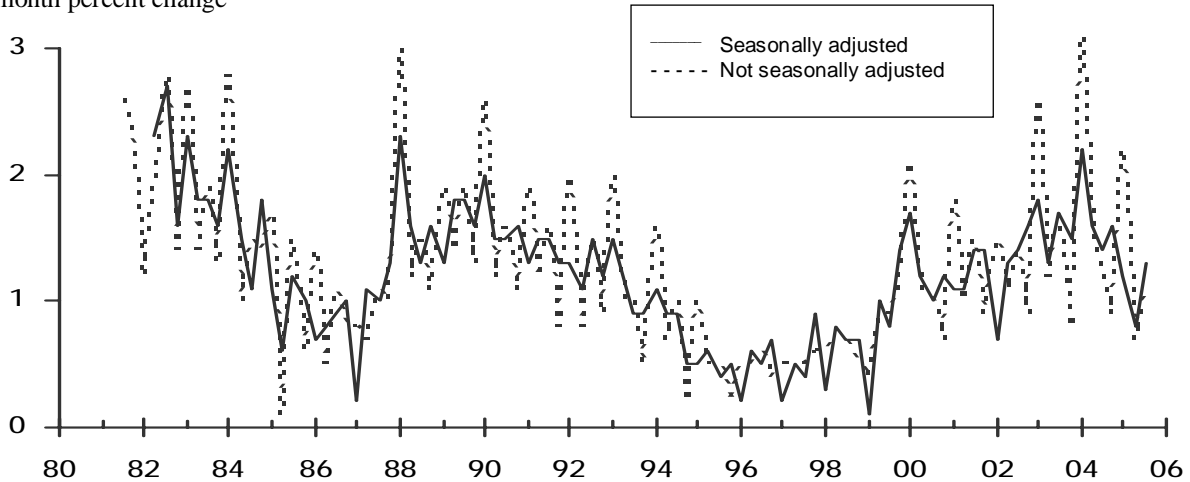


Chart C. Changes in benefits, civilian workers, seasonally adjusted and not seasonally adjusted, 1981-2005

3-month percent change



**Table 1. Employment Cost Index for total compensation<sup>1</sup>, wages and salaries, and benefit costs by industry and occupational group**

(Seasonally adjusted data)

Industry and occupational group	Indexes (June 1989=100)		Percent changes for 3-months ended-							
	Jun. 2005	Sep. 2005	Dec. 2003	Mar. 2004	Jun. 2004	Sep. 2004	Dec. 2004	Mar. 2005	Jun. 2005	Sep. 2005
<b>TOTAL COMPENSATION</b>										
Civilian workers .....	177.9	179.4	0.8	1.1	0.9	0.9	0.8	0.7	0.7	0.8
State and local government .....	175.6	177.5	.7	.9	.9	.8	.9	1.0	.7	1.1
Private industry .....	178.4	179.8	.8	1.1	.9	1.0	.8	.6	.6	.8
<b>Industry</b>										
Goods producing <sup>2</sup> .....	178.9	180.9	.7	1.7	1.0	1.3	1.0	.5	1.0	1.1
Construction .....	170.8	172.8	.8	.8	.5	.7	.4	1.1	.9	1.2
Manufacturing .....	179.1	180.6	1.1	1.6	1.1	1.2	1.0	.4	1.0	.8
Durables .....	180.7	182.3	1.1	1.7	1.2	1.3	1.1	.4	1.2	.9
Nondurables .....	176.4	177.8	1.0	1.3	.9	1.1	.9	.3	.7	.8
Service producing <sup>3</sup> .....	178.2	179.4	.9	.8	.9	.8	.7	.6	.5	.7
Transportation and public utilities .....	175.2	176.9	.9	1.4	1.1	.8	.6	.2	.3	1.0
Wholesale trade .....	178.5	181.5	.6	.6	.6	1.4	.1	1.0	-.4	1.7
Retail trade .....	167.1	168.4	1.1	.4	.9	.3	.7	.6	.6	.8
Finance, insurance, and real estate <sup>4</sup> .....	190.9	191.0	.4	.9	.6	.7	.6	1.6	1.1	.1
Services .....	180.6	181.3	.9	.9	1.0	.9	1.0	.7	.6	.4
Nonmanufacturing .....	177.4	178.7	.9	.8	.9	.8	.8	.7	.6	.7
<b>Occupational group</b>										
White collar .....	181.4	182.8	.9	.9	.8	.9	.9	.9	.6	.8
Blue collar .....	173.3	174.6	1.0	1.5	1.0	1.0	.9	.2	.8	.8
Service .....	171.9	173.1	.9	.9	.9	.5	.7	.2	.6	.7
<b>WAGES AND SALARIES</b>										
Civilian workers .....	168.2	169.2	.5	.6	.6	.7	.5	.6	.6	.6
State and local government .....	167.3	168.5	.5	.6	.5	.4	.6	.8	.5	.7
Private industry .....	168.4	169.4	.6	.6	.6	.7	.4	.6	.6	.6
<b>Industry</b>										
Goods producing <sup>2,4</sup> .....	164.8	166.0	.3	.8	.6	.9	.1	.7	.7	.7
Construction .....	159.1	160.6	.6	.6	.4	.6	.3	.3	.8	.9
Manufacturing <sup>4</sup> .....	166.4	167.4	.3	.7	.7	.9	.1	.8	.7	.6
Durables <sup>4</sup> .....	167.1	168.1	.2	.6	.6	1.0	.1	.7	.7	.6
Nondurables .....	165.1	166.2	.6	.7	.7	.8	.4	.6	.5	.7
Service producing <sup>3</sup> .....	169.9	170.8	.7	.5	.5	.7	.6	.5	.5	.5
Transportation and public utilities <sup>4</sup> .....	161.1	162.4	.3	.7	1.0	.8	.1	-.4	.8	.8
Wholesale trade .....	168.5	171.6	.7	.2	.4	1.6	-.8	.8	-.6	1.8
Retail trade .....	161.3	162.7	.4	.4	.6	.1	.6	.6	.6	.9
Finance, insurance, and real estate <sup>4</sup> .....	181.2	180.9	.2	.4	.1	.7	.7	.8	1.1	-.2
Services .....	174.3	174.8	.8	.7	.8	.8	.8	.7	.5	.3
Nonmanufacturing .....	168.6	169.5	.7	.6	.5	.7	.6	.5	.5	.5

See footnotes at end of table.

**Table 1. Employment Cost Index for total compensation<sup>1</sup>, wages and salaries, and benefit costs by industry and occupational group — Continued**

(Seasonally adjusted data)

Industry and occupational group	Indexes (June 1989=100)		Percent changes for 3-months ended—							
	Jun. 2005	Sep. 2005	Dec. 2003	Mar. 2004	Jun. 2004	Sep. 2004	Dec. 2004	Mar. 2005	Jun. 2005	Sep. 2005
<b>WAGES AND SALARIES—Continued</b>										
<b>Occupational group</b>										
White collar .....	172.2	173.2	0.7	0.5	0.6	0.8	0.6	0.5	0.5	0.6
Blue collar <sup>4</sup> .....	162.1	163.0	.3	.7	.7	.8	.3	.6	.8	.6
Service <sup>4</sup> .....	162.3	163.2	.4	.4	.6	.3	.5	.5	.6	.6
<b>BENEFIT COSTS</b>										
Civilian workers .....	202.0	204.7	1.5	2.2	1.6	1.4	1.6	1.2	.8	1.3
State and local government .....	195.4	198.7	1.3	1.6	1.8	1.6	1.5	1.5	1.2	1.7
Private industry .....	203.6	206.2	1.5	2.2	1.7	1.3	1.6	1.1	.8	1.3
<b>Industry</b>										
Goods producing <sup>2</sup> .....	208.2	211.7	1.5	3.4	1.5	2.0	2.3	.9	1.4	1.7
Manufacturing .....	207.4	210.8	1.8	3.9	1.8	2.1	1.9	.4	1.5	1.6
Service producing <sup>3</sup> .....	200.9	202.9	1.5	1.5	1.7	.9	1.2	1.2	.4	1.0
Nonmanufacturing .....	202.3	204.6	1.4	1.5	1.7	1.0	1.5	1.2	.6	1.1
<b>Occupational group</b>										
White collar .....	207.7	210.7	1.4	1.6	1.5	1.4	1.6	1.7	.9	1.4
Blue collar .....	198.3	200.7	1.6	3.1	1.9	1.6	1.6	-.1	.8	1.2
Service .....	201.2	203.4	2.0	2.2	1.7	1.2	1.2	-.3	.9	1.1

<sup>1</sup> Includes wages, salaries, and employer costs for employee benefits.<sup>2</sup> Includes mining, construction, and manufacturing.<sup>3</sup> Includes transportation, communication, and public utilities; wholesale and

retail trade; finance, insurance, and real estate; and service industries.

<sup>4</sup> No identifiable seasonality was found for this series.



**Table 2. Employment Cost Index for total compensation<sup>1</sup> for civilian and State and local government workers by industry and occupational group**

(Not seasonally adjusted data)

Industry and occupational group	Indexes (June 1989=100)			Percent changes for—					
	Sep. 2004	Jun. 2005	Sep. 2005	3 months ended—			12 months ended—		
				Sep. 2004	Jun. 2005	Sep. 2005	Sep. 2004	Jun. 2005	Sep. 2005
<b>Civilian workers</b> .....	173.9	177.7	179.3	1.0	0.6	0.9	3.8	3.2	3.1
Excluding sales occupations .....	173.9	178.0	179.5	.9	.6	.8	3.7	3.3	3.2
<b>Industry</b>									
Goods producing <sup>2</sup> .....	173.4	178.5	179.8	.9	.8	.7	4.6	3.8	3.7
Manufacturing .....	174.9	179.6	180.7	1.0	.8	.6	5.0	3.7	3.3
Service producing <sup>3</sup> .....	174.0	177.4	179.1	1.0	.5	1.0	3.4	3.0	2.9
Services .....	174.5	177.8	179.6	1.3	.5	1.0	3.6	3.2	2.9
Health services .....	176.7	181.1	182.7	1.3	.7	.9	4.4	3.8	3.4
Hospitals .....	180.5	185.5	187.6	1.3	.7	1.1	4.3	4.1	3.9
Educational services .....	171.8	174.5	178.1	1.7	.3	2.1	2.9	3.3	3.7
Public administration <sup>4</sup> .....	174.1	178.3	181.1	1.6	.4	1.6	4.1	4.0	4.0
Nonmanufacturing .....	173.5	177.1	178.8	1.0	.6	1.0	3.4	3.1	3.1
<b>Occupational group</b>									
White collar .....	175.8	179.9	181.5	1.0	.6	.9	3.5	3.4	3.2
Excluding sales .....	176.2	180.6	182.1	1.0	.6	.8	3.5	3.6	3.3
Professional specialty and technical .....	173.6	177.6	179.6	1.4	.5	1.1	4.0	3.7	3.5
Executive, administrative, and managerial .....	178.2	183.1	184.0	.6	.6	.5	2.4	3.4	3.3
Administrative support, including clerical .....	178.7	183.3	184.7	.8	.7	.8	4.1	3.4	3.4
Blue collar .....	170.1	173.8	174.8	.8	.8	.6	4.4	3.0	2.8
Service .....	172.7	175.9	178.1	1.1	.6	1.3	3.5	2.9	3.1
<b>State and local government</b> .....	171.5	174.7	177.9	1.7	.3	1.8	3.4	3.6	3.7
<b>Industry</b>									
Services .....	169.7	172.4	175.8	1.7	.3	2.0	2.9	3.4	3.6
Excluding schools .....	173.0	176.4	179.3	1.7	.5	1.6	3.7	3.7	3.6
Health services .....	175.7	179.6	182.3	1.6	.4	1.5	3.7	3.9	3.8
Hospitals .....	176.3	179.8	182.6	1.8	.4	1.6	3.5	3.8	3.6
Educational services .....	168.8	171.4	174.9	1.7	.3	2.0	2.7	3.3	3.6
Schools .....	169.2	171.7	175.2	1.7	.3	2.0	2.7	3.2	3.5
Elementary and secondary .....	168.0	170.3	174.0	2.1	.3	2.2	3.1	3.5	3.6
Colleges and universities .....	172.4	175.6	178.4	.8	.3	1.6	1.9	2.7	3.5
Public administration <sup>4</sup> .....	174.1	178.3	181.1	1.6	.4	1.6	4.1	4.0	4.0
<b>Occupational group</b>									
White collar .....	170.0	173.1	176.0	1.5	.3	1.7	3.1	3.3	3.5
Professional specialty and technical .....	168.4	171.1	174.2	1.7	.4	1.8	3.1	3.3	3.4
Executive, administrative, and managerial .....	172.1	176.5	178.8	.6	-.1	1.3	2.4	3.2	3.9
Administrative support, including clerical .....	174.3	177.7	180.4	1.5	.3	1.5	3.8	3.4	3.5
Blue collar .....	169.9	173.8	177.4	1.4	.7	2.1	3.9	3.8	4.4
Service .....	179.4	183.0	187.6	2.3	.5	2.5	4.3	4.4	4.6

<sup>1</sup> Includes wages, salaries, and employer costs for employee benefits.<sup>2</sup> Includes mining, construction, and manufacturing.<sup>3</sup> Includes transportation, communication, and public utilities; wholesale and retail trade; finance, insurance, and real estate; service

industries; and public administration.

<sup>4</sup> Includes executive, legislative, judicial, administrative, and regulatory activities of State and local governments, SICs 91 through 96.

**Table 3. Employment Cost Index for total compensation<sup>1</sup> for private industry workers, by industry and occupational group**

(Not seasonally adjusted data)

Industry and occupational group	Indexes (June 1989=100)			Percent changes for—					
	Sep. 2004	Jun. 2005	Sep. 2005	3 months ended—			12 months ended—		
				Sep. 2004	Jun. 2005	Sep. 2005	Sep. 2004	Jun. 2005	Sep. 2005
<b>Private industry workers</b> .....	174.4	178.5	179.6	0.8	0.7	0.6	3.7	3.2	3.0
Excluding sales occupations .....	174.6	178.9	179.9	.8	.7	.6	3.9	3.3	3.0
<b>Industry</b>									
<b>Goods producing<sup>2</sup></b> .....	173.3	178.5	179.7	.9	.9	.7	4.6	3.9	3.7
Excluding sales .....	172.5	177.9	179.1	.8	.9	.7	4.5	3.9	3.8
White collar .....	176.4	184.2	186.0	1.0	1.1	1.0	3.7	5.4	5.4
Excluding sales .....	174.5	183.0	184.7	.7	1.2	.9	3.6	5.6	5.8
Blue collar .....	171.3	174.7	175.6	.9	.7	.5	5.2	2.9	2.5
Construction .....	167.0	171.0	172.9	.7	1.1	1.1	2.9	3.1	3.5
Manufacturing .....	174.9	179.6	180.7	1.0	.8	.6	5.0	3.7	3.3
White collar .....	176.4	183.4	184.8	1.0	1.1	.8	4.1	5.0	4.8
Excluding sales .....	174.1	181.5	183.0	.9	1.2	.8	4.0	5.2	5.1
Blue collar .....	173.7	176.7	177.5	1.0	.5	.5	5.9	2.7	2.2
Durables .....	175.8	181.2	182.3	1.0	.9	.6	5.5	4.1	3.7
Aircraft manufacturing (SIC 3721) ..	201.6	234.5	235.1	.3	.2	.3	9.3	16.7	16.6
White collar .....	195.2	228.4	228.7	.2	.3	.1	10.0	17.2	17.2
Blue collar .....	210.9	242.6	243.7	1.2	.0	.5	8.8	16.5	15.6
Nondurables .....	173.1	176.8	177.8	.8	.6	.6	4.3	3.0	2.7
Service producing <sup>3</sup> .....	174.7	178.1	179.3	.8	.6	.7	3.5	2.8	2.6
Excluding sales .....	175.6	179.4	180.3	.8	.6	.5	3.5	3.0	2.7
White collar .....	177.3	180.7	181.9	.9	.6	.7	3.6	2.8	2.6
Excluding sales .....	179.4	183.2	184.1	.9	.4	.5	3.6	3.0	2.6
Blue collar .....	167.4	171.5	172.4	.6	.9	.5	3.2	3.1	3.0
Service .....	168.1	171.1	172.1	.4	.6	.6	3.0	2.2	2.4
Transportation and public utilities .....	173.6	175.8	177.3	.6	.7	.9	4.3	1.9	2.1
Transportation .....	166.2	166.1	167.8	.9	.4	1.0	4.3	.9	1.0
Public utilities .....	183.6	189.2	190.4	.3	1.2	.6	4.1	3.3	3.7
Communications .....	183.8	188.4	190.0	.1	1.3	.8	3.0	2.6	3.4
Electric, gas, and sanitary services .....	183.3	190.2	190.7	.5	1.2	.3	5.5	4.3	4.0
Wholesale and retail trade .....	169.1	171.7	173.4	.6	.5	1.0	2.9	2.1	2.5
Excluding sales .....	169.6	173.1	174.5	.6	.5	.8	2.8	2.7	2.9
Wholesale trade .....	177.8	179.3	181.8	1.1	.1	1.4	3.4	1.9	2.2
Excluding sales .....	175.3	179.5	180.5	.7	.2	.6	2.4	3.2	3.0
Retail trade .....	164.2	167.3	168.6	.3	.7	.8	2.7	2.2	2.7
General merchandise stores .....	168.8	172.1	171.9	1.6	-.1	-.1	4.7	3.5	1.8
Food stores .....	163.5	165.9	166.6	.0	.5	.4	2.6	1.5	1.9
Finance, insurance, and real estate .....	184.8	190.9	191.0	.7	1.1	.1	2.6	4.0	3.4
Excluding sales .....	190.0	196.1	195.2	.7	.9	-.5	2.5	3.9	2.7
Banking, savings and loan, and other credit agencies .....	210.5	217.3	213.7	.8	1.7	-1.7	1.4	4.0	1.5
Insurance .....	182.1	188.8	189.0	.9	1.3	.1	4.0	4.6	3.8
Excluding sales .....	179.1	185.0	185.5	.6	1.1	.3	3.6	3.9	3.6
Services .....	176.9	180.6	181.6	1.0	.5	.6	3.8	3.1	2.7
Business services .....	178.5	181.0	181.1	.9	.5	.1	3.8	2.3	1.5
Health services .....	177.0	181.5	182.9	1.3	.7	.8	4.5	3.8	3.3
Hospitals .....	181.8	187.3	189.1	1.2	.8	1.0	4.5	4.2	4.0
Nursing homes .....	—	—	—	.5	.9	.9	3.1	2.6	3.0
Educational services .....	187.0	190.9	194.9	1.5	.5	2.1	3.8	3.6	4.2
Colleges and universities .....	185.2	188.6	192.3	1.5	.5	2.0	3.8	3.3	3.8

See footnotes at end of table.

**Table 3. Employment Cost Index for total compensation<sup>1</sup> for private industry workers, by industry and occupational group — Continued**

(Not seasonally adjusted data)

Industry and occupational group	Indexes (June 1989=100)			Percent changes for—					
	Sep. 2004	Jun. 2005	Sep. 2005	3 months ended—			12 months ended—		
				Sep. 2004	Jun. 2005	Sep. 2005	Sep. 2004	Jun. 2005	Sep. 2005
<b>Industry—Continued</b>									
<b>Nonmanufacturing industries</b> .....	173.9	177.6	178.9	0.8	0.6	0.7	3.5	3.0	2.9
White collar .....	177.2	181.0	182.3	.9	.6	.7	3.5	3.0	2.9
Excluding sales .....	179.3	183.6	184.5	.9	.5	.5	3.5	3.3	2.9
Blue collar .....	166.4	170.6	171.6	.5	1.1	.6	3.3	3.1	3.1
Service .....	168.0	171.0	172.0	.4	.5	.6	2.9	2.2	2.4
<b>Occupational group</b>									
<b>White collar</b> .....	177.3	181.6	183.0	.9	.7	.8	3.6	3.4	3.2
Excluding sales .....	178.3	183.2	184.2	.9	.7	.5	3.6	3.7	3.3
Professional specialty and technical .....	176.8	181.6	183.0	1.2	.4	.8	4.4	3.9	3.5
Executive, administrative, and managerial .....	179.2	184.2	184.8	.6	.7	.3	2.4	3.4	3.1
Sales .....	173.1	174.4	177.0	1.1	.8	1.5	3.5	1.9	2.3
Administrative support, including clerical .....	179.4	184.3	185.4	.7	.8	.6	4.1	3.5	3.3
<b>Blue collar</b> .....	170.1	173.7	174.7	.8	.8	.6	4.5	2.9	2.7
Precision production, craft, and repair ....	170.2	174.9	175.6	.7	1.0	.4	4.4	3.4	3.2
Machine operators, assemblers, and inspectors .....	172.2	173.8	174.9	1.0	.3	.6	5.9	1.9	1.6
Transportation and material moving .....	161.8	165.7	167.0	.7	1.2	.8	3.3	3.2	3.2
Handlers, equipment cleaners, helpers, and laborers .....	174.3	177.9	179.2	.6	.6	.7	3.4	2.7	2.8
<b>Service</b> .....	168.9	171.9	172.9	.4	.6	.6	3.1	2.2	2.4
<b>Production and nonsupervisory occupations<sup>4</sup></b> .....	172.4	175.8	177.1	.8	.7	.7	4.0	2.8	2.7

<sup>1</sup> Includes wages, salaries, and employer costs for employee benefits.<sup>2</sup> Includes mining, construction, and manufacturing.<sup>3</sup> Includes transportation, communication, and public utilities; wholesale and retail trade; finance, insurance, and real estate; and service industries.<sup>4</sup> This series has the same industry and occupational coverage as the Hourly Earnings Index, which was discontinued in January 1989.

NOTE: Dashes indicate data not available.

**Table 4. Employment Cost Index for total compensation<sup>1</sup> for private industry workers, by bargaining status, region, and area**

(Not seasonally adjusted data)

Bargaining status, region, and area	Indexes (June 1989=100)			Percent changes for—					
	Sep. 2004	Jun. 2005	Sep. 2005	3 months ended—			12 months ended—		
				Sep. 2004	Jun. 2005	Sep. 2005	Sep. 2004	Jun. 2005	Sep. 2005
<b>Bargaining status</b>									
<b>Union</b> .....	175.3	179.0	180.4	0.8	0.8	0.8	5.8	2.9	2.9
Blue-collar occupations .....	172.6	176.6	177.8	.8	1.0	.7	5.8	3.2	3.0
Goods-producing industries <sup>2</sup> .....	176.0	179.8	181.0	.8	.9	.7	6.9	3.0	2.8
Service-producing industries <sup>3</sup> .....	174.4	177.9	179.5	.9	.7	.9	4.7	2.9	2.9
Manufacturing .....	178.4	181.7	182.6	.8	.6	.5	8.1	2.7	2.4
Blue-collar occupations .....	177.3	179.5	180.5	.8	.5	.6	8.3	2.0	1.8
Nonmanufacturing .....	173.0	176.9	178.6	.8	1.0	1.0	4.5	3.1	3.2
<b>Nonunion</b> .....	174.2	178.3	179.4	.9	.7	.6	3.4	3.2	3.0
Blue-collar occupations .....	168.6	172.1	172.9	.7	.8	.5	3.7	2.8	2.6
Goods-producing industries <sup>2</sup> .....	172.4	178.0	179.3	.9	.8	.7	3.8	4.2	4.0
Service-producing industries <sup>3</sup> .....	174.6	178.0	179.1	.8	.6	.6	3.3	2.8	2.6
Manufacturing .....	173.8	179.0	180.1	1.0	.8	.6	4.1	4.1	3.6
Blue-collar occupations .....	171.2	174.7	175.4	1.1	.5	.4	4.3	3.2	2.5
Nonmanufacturing .....	174.0	177.7	178.9	.8	.6	.7	3.3	3.0	2.8
<b>Region<sup>4</sup></b>									
Northeast .....	173.7	177.6	178.9	.8	.9	.7	4.1	3.1	3.0
South .....	169.5	173.4	174.0	1.0	.5	.3	3.9	3.3	2.7
Midwest .....	177.6	180.9	183.0	.8	.5	1.2	3.4	2.7	3.0
West .....	178.1	183.3	184.0	.7	1.0	.4	3.9	3.7	3.3
<b>Area</b>									
Metropolitan .....	174.6	178.6	179.9	.9	.7	.7	3.7	3.2	3.0
Other .....	173.3	177.3	178.1	.7	.5	.5	4.3	3.0	2.8

<sup>1</sup> Includes wages, salaries, and employer costs for employee benefits.<sup>2</sup> Includes mining, construction, and manufacturing.<sup>3</sup> Includes transportation, communication, and public utilities; wholesale and retail trade; finance, insurance, and real estate; and service industries.<sup>4</sup> The regional coverage is as follows: Northeast: Connecticut, Maine, Massachusetts, New Hampshire, New Jersey, New York, Pennsylvania, Rhode Island, and Vermont; South: Alabama, Arkansas, Delaware, District of Columbia, Florida, Georgia, Kentucky, Louisiana, Maryland, Mississippi,

North Carolina, Oklahoma, South Carolina, Tennessee, Texas, Virginia, and West Virginia; Midwest: Illinois, Indiana, Iowa, Kansas, Michigan, Minnesota, Missouri, Nebraska, North Dakota, Ohio, South Dakota, and Wisconsin; and West: Alaska, Arizona, California, Colorado, Hawaii, Idaho, Montana, Nevada, New Mexico, Oregon, Utah, Washington, and Wyoming.

NOTE: The indexes for these series are not strictly comparable to those for the aggregate, occupation, and industry series.

**Table 5. Employment Cost Index for wages and salaries for civilian and State and local government workers, by industry and occupational group**

(Not seasonally adjusted data)

Industry and occupational group	Indexes (June 1989=100)			Percent changes for—					
	Sep. 2004	Jun. 2005	Sep. 2005	3 months ended—			12 months ended—		
				Sep. 2004	Jun. 2005	Sep. 2005	Sep. 2004	Jun. 2005	Sep. 2005
<b>Civilian workers</b> .....	165.7	168.2	169.5	0.9	0.5	0.8	2.4	2.4	2.3
Excluding sales occupations .....	165.6	168.3	169.4	.9	.5	.7	2.4	2.5	2.3
<b>Industry</b>									
Goods producing <sup>1</sup> .....	162.3	164.9	166.0	.8	.8	.7	2.5	2.4	2.3
Manufacturing .....	163.8	166.4	167.4	.9	.7	.6	2.6	2.5	2.2
Service producing <sup>2</sup> .....	167.0	169.5	170.8	.9	.5	.8	2.5	2.4	2.3
Services .....	169.3	171.9	173.3	1.1	.4	.8	2.8	2.7	2.4
Health services .....	170.8	174.3	175.6	1.3	.6	.7	3.7	3.4	2.8
Hospitals .....	171.8	175.7	177.5	1.1	.6	1.0	3.3	3.4	3.3
Educational services .....	166.0	167.9	170.5	1.3	.2	1.5	2.0	2.5	2.7
Public administration <sup>3</sup> .....	162.6	165.6	167.4	.7	.4	1.1	2.0	2.6	3.0
Nonmanufacturing .....	166.0	168.5	169.9	.9	.5	.8	2.4	2.4	2.3
<b>Occupational group</b>									
White collar .....	168.7	171.1	172.5	1.0	.5	.8	2.6	2.4	2.3
Excluding sales .....	169.1	172.0	173.1	.9	.5	.6	2.5	2.6	2.4
Professional specialty and technical .....	166.5	168.7	170.3	1.3	.4	.9	2.9	2.6	2.3
Executive, administrative, and managerial .....	173.4	176.9	177.4	.6	.6	.3	1.7	2.6	2.3
Administrative support, including clerical .....	168.8	172.0	173.0	.8	.6	.6	2.7	2.7	2.5
Blue collar .....	159.7	162.2	163.2	.8	.7	.6	2.5	2.4	2.2
Service .....	162.8	165.3	166.8	.6	.5	.9	1.9	2.1	2.5
<b>State and local government</b> .....	164.5	166.7	168.9	1.0	.2	1.3	2.0	2.4	2.7
<b>Industry</b>									
Services .....	164.8	166.6	168.9	1.3	.2	1.4	2.0	2.4	2.5
Excluding schools .....	167.5	170.1	172.0	1.1	.4	1.1	2.6	2.7	2.7
Health services .....	169.6	172.6	174.1	1.1	.4	.9	2.7	2.9	2.7
Hospitals .....	169.9	172.5	174.0	1.2	.3	.9	2.7	2.7	2.4
Educational services .....	164.2	165.8	168.3	1.3	.2	1.5	1.9	2.3	2.5
Schools .....	164.3	166.0	168.4	1.2	.2	1.4	1.8	2.3	2.5
Elementary and secondary .....	163.8	165.1	167.8	1.4	.2	1.6	2.0	2.2	2.4
Colleges and universities .....	165.4	168.2	170.0	.6	.2	1.1	1.2	2.3	2.8
Public administration <sup>3</sup> .....	162.6	165.6	167.4	.7	.4	1.1	2.0	2.6	3.0
<b>Occupational group</b>									
White collar .....	164.1	166.2	168.3	1.0	.2	1.3	1.9	2.3	2.6
Professional specialty and technical .....	164.4	166.2	168.4	1.3	.3	1.3	2.1	2.4	2.4
Executive, administrative, and managerial .....	164.3	168.0	169.7	.3	-.1	1.0	1.1	2.6	3.3
Administrative support, including clerical .....	162.6	164.0	166.1	1.1	.1	1.3	2.2	2.0	2.2
Blue collar .....	160.7	163.2	165.3	.9	.5	1.3	2.0	2.5	2.9
Service .....	168.5	171.2	173.9	.9	.5	1.6	2.2	2.5	3.2

<sup>1</sup> Includes mining, construction, and manufacturing.<sup>2</sup> Includes transportation, communication, and public utilities; wholesale and retail trade; finance, insurance, and real estate; service

industries; and public administration.

<sup>3</sup> Includes executive, legislative, judicial, administrative, and regulatory activities of State and local governments, SICs 91 through 96.

**Table 6. Employment Cost Index for wages and salaries for private industry workers by industry and occupational group**

(Not seasonally adjusted data)

Industry and occupational group	Indexes (June 1989=100)			Percent changes for—					
	Sep. 2004	Jun. 2005	Sep. 2005	3 months ended—			12 months ended—		
				Sep. 2004	Jun. 2005	Sep. 2005	Sep. 2004	Jun. 2005	Sep. 2005
<b>Private industry workers</b> .....	165.9	168.4	169.5	0.9	0.6	0.7	2.6	2.4	2.2
Excluding sales occupations .....	165.8	168.7	169.6	.8	.7	.5	2.5	2.6	2.3
<b>Industry</b>									
<b>Goods producing</b> <sup>1</sup> .....	162.3	164.8	166.0	.9	.7	.7	2.5	2.4	2.3
Excluding sales .....	161.2	164.0	165.2	.6	.7	.7	2.4	2.4	2.5
White collar .....	166.0	168.5	170.0	.9	.7	.9	2.5	2.4	2.4
Excluding sales .....	163.6	166.7	168.0	.6	.8	.8	2.3	2.5	2.7
Blue collar .....	159.8	162.4	163.4	.8	.7	.6	2.5	2.4	2.3
Construction .....	157.1	159.2	160.9	.8	1.0	1.1	2.3	2.1	2.4
Manufacturing .....	163.8	166.4	167.4	.9	.7	.6	2.6	2.5	2.2
White collar .....	166.1	168.7	169.9	.9	.7	.7	2.5	2.4	2.3
Excluding sales .....	163.5	166.5	167.7	.6	.8	.7	2.5	2.5	2.6
Blue collar .....	162.1	164.7	165.5	.9	.7	.5	2.7	2.6	2.1
Durables .....	164.5	167.1	168.1	1.0	.7	.6	2.4	2.6	2.2
Aircraft manufacturing (SIC 3721) ..	172.4	176.1	176.6	.3	.3	.3	3.0	2.4	2.4
White collar .....	165.7	170.4	170.5	.1	.2	.1	3.4	3.0	2.9
Blue collar .....	183.0	184.8	186.0	1.3	.5	.6	2.9	2.3	1.6
Nondurables .....	162.8	165.3	166.3	.7	.5	.6	2.8	2.3	2.1
Service producing <sup>2</sup> .....	167.5	170.0	171.1	.8	.6	.6	2.6	2.3	2.1
Excluding sales .....	168.5	171.4	172.1	.8	.6	.4	2.6	2.6	2.1
White collar .....	170.4	173.0	174.1	.9	.5	.6	2.7	2.4	2.2
Excluding sales .....	172.8	175.9	176.5	.9	.5	.3	2.7	2.7	2.1
Blue collar .....	158.9	161.5	162.4	.7	.9	.6	2.5	2.3	2.2
Service .....	159.4	161.8	162.8	.4	.6	.6	1.8	1.9	2.1
Transportation and public utilities .....	160.4	161.1	162.4	.8	.8	.8	2.8	1.3	1.2
Transportation .....	155.0	154.6	156.2	1.0	.8	1.0	3.1	.8	.8
Public utilities .....	167.5	169.9	170.5	.7	1.0	.4	2.5	2.1	1.8
Communications .....	168.8	170.3	171.0	.8	1.1	.4	2.1	1.7	1.3
Electric, gas, and sanitary services .....	165.9	169.2	169.8	.5	.8	.4	3.0	2.5	2.4
Wholesale and retail trade .....	162.5	164.1	165.9	.6	.4	1.1	2.1	1.5	2.1
Excluding sales .....	163.5	166.3	167.7	.4	.5	.8	1.7	2.1	2.6
Wholesale trade .....	169.7	169.4	171.7	1.1	-.1	1.4	3.0	1.0	1.2
Excluding sales .....	168.6	171.5	172.2	.6	.0	.4	1.8	2.3	2.1
Retail trade .....	158.7	161.4	162.9	.2	.7	.9	1.5	1.9	2.6
General merchandise stores .....	157.5	159.0	159.0	1.7	-.2	.0	2.9	2.6	1.0
Food stores .....	154.5	156.7	157.5	.1	.6	.5	1.5	1.6	1.9
Finance, insurance, and real estate .....	176.5	181.2	180.9	.7	1.1	-.2	1.4	3.4	2.5
Excluding sales .....	181.8	186.5	184.6	.7	1.0	-1.0	1.5	3.3	1.5
Banking, savings and loan, and other credit agencies .....	209.5	215.4	210.2	.9	2.2	-2.4	.2	3.8	.3
Insurance .....	168.9	173.7	173.9	1.0	1.2	.1	3.1	3.9	3.0
Excluding sales .....	164.6	168.5	168.9	.5	.8	.2	2.6	2.9	2.6
Services .....	171.1	174.2	175.1	1.1	.5	.5	3.1	2.9	2.3
Business services .....	174.3	176.5	176.5	.9	.6	.0	3.1	2.2	1.3
Health services .....	170.9	174.6	175.8	1.2	.7	.7	3.8	3.4	2.9
Hospitals .....	172.4	176.7	178.5	1.1	.7	1.0	3.5	3.6	3.5
Nursing homes .....	—	—	—	.5	.9	.7	2.5	2.8	2.9
Educational services .....	175.5	178.6	182.1	1.7	.4	2.0	3.1	3.5	3.8
Colleges and universities .....	172.9	175.5	178.4	1.7	.5	1.7	3.2	3.2	3.2

See footnotes at end of table.

**Table 6. Employment Cost Index for wages and salaries for private industry workers by industry and occupational group — Continued**

(Not seasonally adjusted data)

Industry and occupational group	Indexes (June 1989=100)			Percent changes for—					
	Sep. 2004	Jun. 2005	Sep. 2005	3 months ended—			12 months ended—		
				Sep. 2004	Jun. 2005	Sep. 2005	Sep. 2004	Jun. 2005	Sep. 2005
<b>Industry—Continued</b>									
<b>Nonmanufacturing industries</b> .....	166.2	168.7	169.8	0.8	0.6	0.7	2.5	2.4	2.2
White collar .....	170.1	172.7	173.8	.9	.6	.6	2.7	2.4	2.2
Excluding sales .....	172.3	175.4	176.1	.9	.6	.4	2.7	2.8	2.2
Blue collar .....	157.1	159.7	160.7	.6	.9	.6	2.4	2.3	2.3
Service .....	159.2	161.7	162.7	.3	.6	.6	1.7	1.9	2.2
<b>Occupational group</b>									
<b>White collar</b> .....	169.7	172.3	173.5	.9	.6	.7	2.7	2.4	2.2
Excluding sales .....	170.6	173.7	174.5	.8	.6	.5	2.6	2.7	2.3
Professional specialty and technical .....	167.6	170.0	171.2	1.3	.4	.7	3.4	2.7	2.1
Executive, administrative, and managerial .....	174.9	178.4	178.7	.6	.7	.2	1.8	2.6	2.2
Sales .....	165.9	166.0	168.9	1.2	.7	1.7	2.7	1.3	1.8
Administrative support, including clerical .....	169.7	173.3	174.1	.7	.8	.5	2.8	2.8	2.6
<b>Blue collar</b> .....	159.5	162.1	163.0	.8	.8	.6	2.5	2.4	2.2
Precision production, craft, and repair ....	159.3	162.0	162.9	.6	1.0	.6	2.4	2.3	2.3
Machine operators, assemblers, and inspectors .....	161.6	163.7	164.5	1.1	.7	.5	3.1	2.4	1.8
Transportation and material moving .....	152.9	156.0	157.3	.7	1.0	.8	2.1	2.8	2.9
Handlers, equipment cleaners, helpers, and laborers .....	163.6	165.9	167.0	.6	.2	.7	2.3	2.0	2.1
<b>Service</b> .....	159.8	162.3	163.2	.3	.6	.6	1.7	1.9	2.1
<b>Production and nonsupervisory occupations<sup>3</sup></b> .....	163.1	165.5	166.7	.9	.6	.7	2.7	2.4	2.2

<sup>1</sup> Includes mining, construction, and manufacturing.<sup>2</sup> Includes transportation, communication, and public utilities; wholesale and retail trade; finance, insurance, and real estate; and service industries.<sup>3</sup> This series has the same industry and occupational coverage as the

Hourly Earnings Index, which was discontinued in January 1989.

NOTE: Dashes indicate data not available.

**Table 7. Employment Cost Index for wages and salaries for private industry workers by bargaining status, region, and area**

(Not seasonally adjusted data)

Bargaining status, region, and area	Indexes (June 1989=100)			Percent changes for—					
	Sep. 2004	Jun. 2005	Sep. 2005	3 months ended—			12 months ended—		
				Sep. 2004	Jun. 2005	Sep. 2005	Sep. 2004	Jun. 2005	Sep. 2005
<b>Bargaining status</b>									
<b>Union</b> .....	160.0	162.1	163.4	0.8	0.8	0.8	3.0	2.1	2.1
Blue-collar occupations .....	156.7	159.3	160.5	.8	1.0	.8	2.6	2.4	2.4
Goods-producing industries <sup>1</sup> .....	158.7	161.1	162.2	.8	.9	.7	2.5	2.3	2.2
Service-producing industries <sup>2</sup> .....	161.7	163.6	164.9	.9	.8	.8	3.5	2.1	2.0
Manufacturing .....	160.5	162.8	163.8	.8	.8	.6	2.4	2.3	2.1
Blue-collar occupations .....	159.2	161.3	162.3	.9	.8	.6	2.6	2.2	1.9
Nonmanufacturing .....	159.6	161.7	163.1	.8	.9	.9	3.2	2.1	2.2
<b>Nonunion</b> .....	167.0	169.6	170.7	.8	.6	.6	2.5	2.4	2.2
Blue-collar occupations .....	161.4	164.0	164.7	.7	.8	.4	2.5	2.4	2.0
Goods-producing industries <sup>1</sup> .....	163.8	166.4	167.5	.9	.7	.7	2.6	2.5	2.3
Service-producing industries <sup>2</sup> .....	168.0	170.7	171.7	.8	.6	.6	2.4	2.5	2.2
Manufacturing .....	165.2	167.8	168.8	.9	.6	.6	2.7	2.5	2.2
Blue-collar occupations .....	164.1	166.9	167.6	.9	.5	.4	2.7	2.6	2.1
Nonmanufacturing .....	167.1	169.7	170.8	.8	.6	.6	2.5	2.4	2.2
<b>Region<sup>3</sup></b>									
Northeast .....	164.9	167.3	168.5	.8	.8	.7	3.1	2.3	2.2
South .....	161.6	164.4	165.0	.9	.5	.4	2.7	2.7	2.1
Midwest .....	169.2	171.3	173.6	.9	.4	1.3	1.9	2.1	2.6
West .....	169.1	171.9	172.2	.7	.9	.2	2.7	2.4	1.8
<b>Area</b>									
Metropolitan .....	166.3	168.8	169.9	.8	.7	.7	2.5	2.4	2.2
Other .....	163.3	166.3	167.2	.7	.7	.5	2.8	2.6	2.4

<sup>1</sup> Includes mining, construction, and manufacturing.<sup>2</sup> Includes transportation, communication, and public utilities; wholesale and retail trade; finance, insurance, and real estate; and service industries.<sup>3</sup> The regional coverage is as follows: Northeast: Connecticut, Maine, Massachusetts, New Hampshire, New Jersey, New York, Pennsylvania, Rhode Island, and Vermont; South: Alabama, Arkansas, Delaware, District of Columbia, Florida, Georgia, Kentucky, Louisiana, Maryland, Mississippi, North Carolina, Oklahoma, South Carolina, Tennessee, Texas, Virginia,

and West Virginia; Midwest: Illinois, Indiana, Iowa, Kansas, Michigan, Minnesota, Missouri, Nebraska, North Dakota, Ohio, South Dakota, and Wisconsin; and West: Alaska, Arizona, California, Colorado, Hawaii, Idaho, Montana, Nevada, New Mexico, Oregon, Utah, Washington, and Wyoming.

NOTE: The indexes for these series are not strictly comparable to those for the aggregate, occupation, and industry series.



**Table 8. Employment Cost Index for benefits for civilian, State and local government, and private industry workers by industry, occupational group, and bargaining status**

(Not seasonally adjusted data)

Industry, occupational group, and bargaining status	Indexes (June 1989=100)			Percent changes for—					
	Sep. 2004	Jun. 2005	Sep. 2005	3 months ended—			12 months ended—		
				Sep. 2004	Jun. 2005	Sep. 2005	Sep. 2004	Jun. 2005	Sep. 2005
<b>Civilian workers</b> .....	195.2	202.8	205.1	1.2	0.7	1.1	6.8	5.1	5.1
State and local government .....	188.3	194.0	199.8	2.9	.5	3.0	6.4	6.0	6.1
Private industry .....	196.9	204.9	206.4	.8	.8	.7	6.8	4.9	4.8
<b>Industry</b>									
Goods producing <sup>1</sup> .....	198.1	209.4	210.9	1.0	1.2	.7	8.7	6.7	6.5
Service producing <sup>2</sup> .....	195.5	201.6	203.1	.7	.5	.7	5.8	3.9	3.9
Manufacturing .....	199.2	208.8	210.1	1.2	1.0	.6	10.0	6.0	5.5
Aircraft manufacturing (SIC 3721) .....	265.2	362.1	362.8	.5	.1	.2	19.8	37.2	36.8
White collar .....	265.9	368.3	369.0	.2	.4	.2	21.6	38.8	38.8
Blue collar .....	262.9	350.5	351.2	1.2	-.4	.2	17.4	34.9	33.6
Nonmanufacturing .....	195.7	203.0	204.6	.7	.7	.8	5.7	4.5	4.5
<b>Occupational group</b>									
White collar .....	199.1	208.5	210.4	.9	.8	.9	6.1	5.6	5.7
Blue collar .....	193.3	199.4	200.3	.8	.8	.5	8.4	4.0	3.6
Service .....	197.5	202.0	203.1	.7	.5	.5	7.3	3.0	2.8
<b>Bargaining status</b>									
Union .....	205.0	211.7	213.5	.8	.8	.9	10.6	4.1	4.1
Nonunion .....	194.6	202.9	204.3	.8	.8	.7	5.9	5.1	5.0

<sup>1</sup> Includes mining, construction, and manufacturing.<sup>2</sup> Includes transportation, communication, and public utilities;

wholesale and retail trade; finance, insurance, and real estate; and service industries.

## EXPLANATORY NOTE

The Employment Cost Index (ECI) is a measure of the change in the cost of labor, free from the influence of employment shifts among occupations and industries. The compensation series includes changes in wages and salaries and employer costs for employee benefits. The wage and salary series and the benefit cost series provide the change for the two components of compensation.

Wages and salaries are defined as the hourly straight-time wage rate or, for workers not paid on an hourly basis, straight-time earnings divided by the corresponding hours. Straight-time wage and salary rates are total earnings before payroll deductions, excluding premium pay for overtime and for work on weekends and holidays, shift differentials, and nonproduction bonuses such as lump-sum payments provided in lieu of wage increases. Production bonuses, incentive earnings, commission payments, and cost-of-living adjustments are included in straight-time wage and salary rates.

Benefits covered by the ECI are: Paid leave—vacations, holidays, sick leave, and other leave; supplemental pay—premium pay for work in addition to the regular work schedule (such as overtime, weekends, and holidays), shift differentials, and nonproduction bonuses (such as referral bonuses and lump-sum payments provided in lieu of wage increases); insurance benefits—life, health, short-term disability, and long-term disability; retirement and savings benefits—defined benefit and defined contribution plans; legally required benefits—Social Security, Medicare, Federal and State unemployment insurance, and workers' compensation; and other benefits—severance pay and supplemental unemployment plans.

The ECI provides data for the civilian economy, which includes the total private nonfarm economy excluding households and the public sector excluding the Federal government. The private industry series and the State and local government series provide data for the two sectors separately.

The sampled establishments are classified by industry categories based on the 1987 Standard Industrial Classification (SIC), as defined by the U.S. Office of Management and Budget. Details on the sample design are included in the bulletin, Employment Cost Indexes, 1975-99, (Bulletin 2532). Within an establishment, specific job categories are selected and classified into about 500 occupational classifications according to the 1990 Census of Population. Individual occupations are combined into broader occupational groups. Employees in occupations included in the survey receive cash payments from the establishment for services performed and the establishment pays the employer's portion of Medicare taxes on that individual's wages. Major exclusions from the survey are the self-employed, individuals who set their own pay (for example proprietors, owners, major stockholders, and partners in unincorporated firms), volunteers, unpaid workers, family members being paid token wages, individuals receiving long-term disability compensation, and U.S. citizens working overseas.

Data for this quarter were collected from a probability sample of approximately 41,000 occupational observations within about 9,500 sample establishments in private industry and approximately 3,500 occupations within about 800 sample establishments in State and local governments. Data are collected for the pay period including the 12<sup>th</sup> day of the survey months of March, June, September, and December.

Fixed employment weights are used each quarter to calculate the most aggregate series—civilian, private, and State and local government. These fixed weights are also used to derive all of the industry and occupation series indexes. Since March 1995, 1990 employment counts, primarily from the Bureau's Occupational Employment Statistics survey, have been used. For more information on these topics, see the articles, "Introducing New Weights for the Employment Cost Index," in the June 1985 issue of the Monthly Labor Review and "Introducing 1990 Weights for the Employment Cost Index" in the June 1995 issue of Compensation and Working Conditions.

For the series based on bargaining status, region, and area size, employment data are not available. The employment weights are reallocated within these series each quarter based on the current ECI sample. The indexes for these series, consequently, are not strictly comparable to those for the aggregate, industry, and occupation series. A fuller explanation of the calculation of index numbers appears in an article, "Estimation Procedures for the Employment Cost Index," in the May 1982 issue of the Monthly Labor Review. Beginning with the March 1990 ECI release, indexes were rebased to June 1989=100. A description of the rebasing is included in the article "Employment Cost Index Rebased to June 1989," in the April 1990 issue of the Monthly Labor Review.

Beginning with the December 1990 ECI release, seasonally adjusted data are available for selected ECI series. Seasonal adjustment removes the effects of events that follow a more or less regular pattern each year. These adjustments make nonseasonal patterns easier to identify. For more information on the methodology used to seasonally adjust ECI series, see the bulletin, Employment Cost Indexes, 1975-99, (Bulletin 2532). The seasonal adjustment factors are recalculated once a year. The March release contains data reflecting the newly updated seasonal adjustment factors. The historical data for the last five years are then revised based on the newly estimated factors. The seasonal factors for 2005 and revised seasonally adjusted indexes for the past five years are available on the Internet site (<http://www.bls.gov/ncs/ect/home.htm>) or upon request.

The ECI sample is rotated over approximately five years, which makes the sample more representative of the economy and reduces respondent burden. The sample is replaced on a cross-area, cross-industry basis.

Because the ECI is a sample survey, it is subject to sampling errors. Sampling errors are differences that occur between the results computed from a sample of observations and those computed from all observations in the population. The estimates derived from different samples selected using the same sample design may differ from one other. A measure of the variation among these differing estimates is the standard error. It can be used to measure the precision with which an estimate from a particular sample approximates the expected result of all possible samples. The chances are about 68 out of 100 that an estimate from the survey differs from a complete population figure by less than the standard error. The chances are about 90 out of 100 that this difference would be less than 1.6 times the standard error. The statements of comparisons appearing in this publication are significant at a 1.6 standard error level or better, unless otherwise indicated. This means that for differences cited, the estimated difference is greater than 1.6 times the standard error of the difference.

Because standard errors vary from quarter to quarter, the ECI uses a five-year moving average of standard errors to evaluate published series. To assist users in ascertaining the reliability of series, the five-year moving average of standard errors for all estimates (excluding seasonally adjusted series) will be available on the Internet site (<http://www.bls.gov/ncs/ect/home.htm>) shortly after publication of the news release.

When determining data to be used in contract negotiations, it is important to note that differences by bargaining status may be due to factors other than union status, such as occupational and industry mix. For example, union occupations tend to be concentrated in blue-collar occupations within manufacturing industries. Thus, differences between blue-collar and white-collar pay or differences in manufacturing versus nonmanufacturing industries could explain such differences. An important consideration when choosing a series for escalation is the number of workers covered. Series with smaller numbers of workers may have larger sampling errors or be dominated by a smaller number of employers. For more information, see the web site: (<http://www.bls.gov/ect/escalator.htm>).

More detailed information on the ECI is available from several sources. These include an historical bulletin—Employment Cost Indexes, 1975-99, (Bulletin 2532), a chapter, “National Compensation Measures,” in the BLS Handbook of Methods (Bulletin 2490), and several articles published in the Monthly Labor Review and Compensation and Working Conditions. The bulletins, articles, and other descriptive pieces are available on the BLS website (<http://www.bls.gov/ncs/ect/home.htm>), by calling (202) 691-6199, or sending e-mail to ([ocltinfo@bls.gov](mailto:ocltinfo@bls.gov)).

Historical and supplemental data series from the ECI are available upon request or at the Internet site <http://www.bls.gov/ect/home.htm>. Historical data are available beginning with the first publication of each series at (<http://www.bls.gov/web/echistry.pdf>) or (<ftp://ftp.bls.gov/pub/suppl/eci.echistry.txt>). Supplemental data from the ECI, providing 12-month percent changes in employer costs for health insurance in private industry, are also available at (<http://www.bls.gov/ncs/ect/sp/echealth.pdf>) beginning with June 1982.

In addition, constant-dollar ECI series derived from the Consumer Price Index for All Urban Consumers (CPI-U) are available. The constant dollar series are calculated by converting the CPI-U to the same base as the ECI, June 1989=100. The ECI for each quarter is divided by the converted CPI-U for the same reference period. The CPI-U U.S. City Average All Items is used to compute all series except for the regional estimates, which use corresponding CPI regional data. Data dating back to the first publication of each series are available at the Internet sites (<http://www.bls.gov/web/econst.pdf>), (<ftp://ftp.bls.gov/pub/suppl/eci.econst.txt>) or upon request.

The costs per hour worked of compensation components, based on data from the ECI, were recently published in a separate news release titled "Employer Costs for Employee Compensation—June 2005." The release is available by e-mail request at [ocltinfo@bls.gov](mailto:ocltinfo@bls.gov), by telephone at (202) 691-6199, or on the Internet site <http://www.bls.gov/ect/home.htm>. Historical data and related articles are included in the bulletin, Employer Costs for Employee Compensation, 1986-99, (Bulletin 2526). Also available is an annual historical summary from March 1986 through March 2003 on the Internet site (<http://www.bls.gov/ncs/ect/home.htm>) or upon request. Data on a quarterly basis beginning with June 2002 are also available. The cost levels are calculated with current employment weights, rather than the fixed 1990 weights used in computing the ECI. Therefore, year-to-year changes in the cost levels usually differ from those in the ECI.