

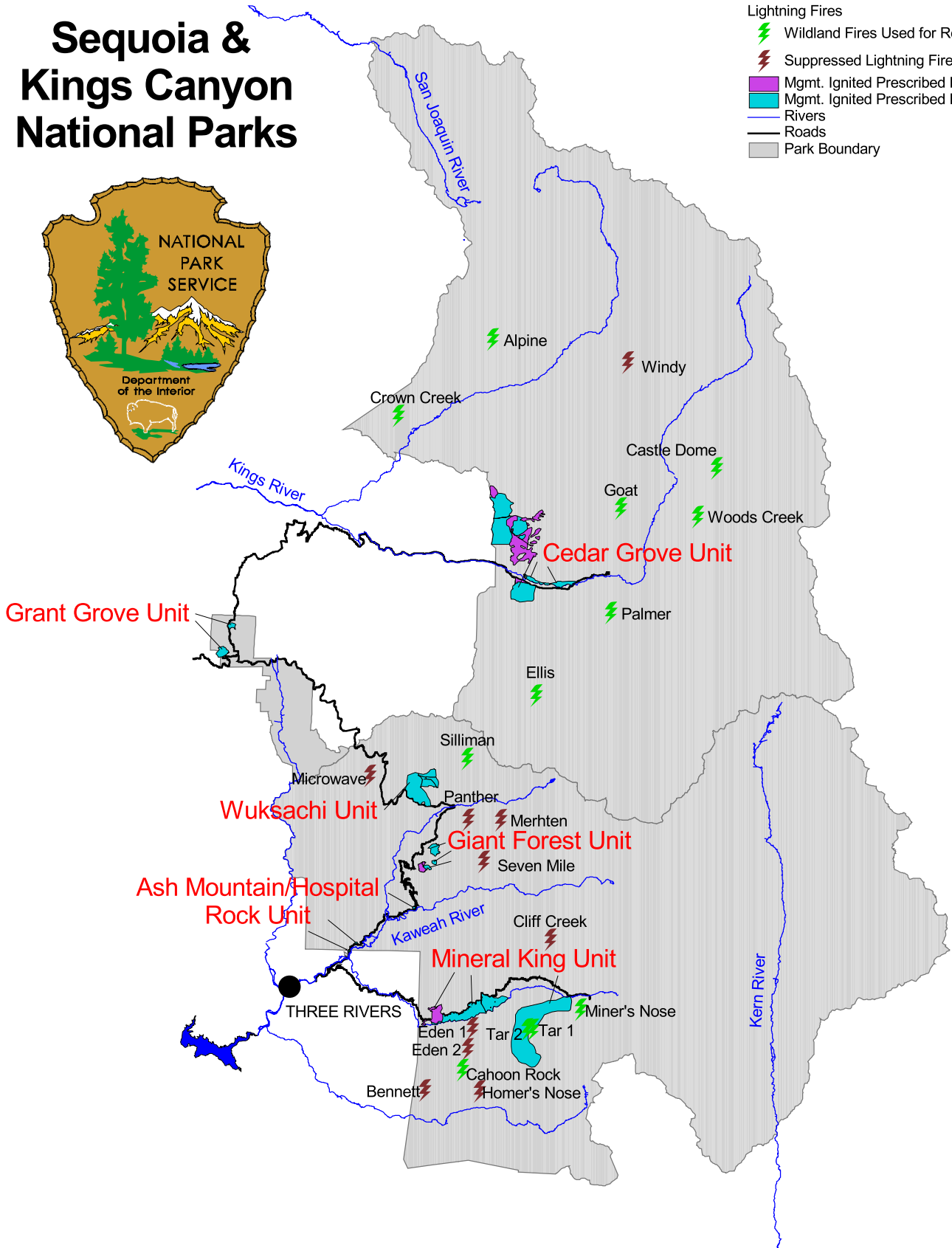
Fire Atlas 1998

Sequoia & Kings Canyon National Parks



Lightning Fires

- Wildland Fires Used for Resource Benefit
- Suppressed Lightning Fires
- Mgmt. Ignited Prescribed Fires - Completed
- Mgmt. Ignited Prescribed Fires - Planned
- Rivers
- Roads
- Park Boundary



Fire Atlas – 1998
Sequoia and Kings Canyon National Parks

December 31, 1998

Total Acreage Burned by all Causes: 2,200.0

Wildland Fires (66.9 acres)

Unplanned fires started by humans or lightning. Human-caused fires are always suppressed. Lightning-caused fires are evaluated to determine the appropriate management strategy. Some of these fires are allowed to burn for resource benefit, others are suppressed.

- **Used for Resource Benefit (WFURB) (19.7 acres)**
Lightning caused, and actively managed to maintain natural ecosystem processes. Includes thirteen small fires totaling 19.7 acres.
- **Suppressed (47.2 acres)**
 - **Lighting Fires**
Lightning-caused fires, suppressed due to factors such as proximity to park boundary, unacceptable smoke impacts, unacceptable weather conditions, or competition for firefighting resources regionally or nationally. Includes nine small fires totaling 2.3 acres.
 - **Human-Caused Wildfires**
Unplanned and unwanted fires that were aggressively suppressed. Includes six small fires totaling 44.9 acres.

Prescribed Fires (2,133.0 acres)

Fires planned and set by NPS staff in designated areas to reduce hazardous fuels and/or restore natural conditions. Includes eight fires totaling 2,133.0 acres.

- Foothills Units
 - Ash Mountain (17 acres)
 - Hospital Rock (2 acres)
- Cedar Grove Units
 - Maintenance (6 acres)
 - Sheep Creek (53 acres)
 - Lewis Creek (1,534 acres)
- Giant Forest Units
 - Keyhole/Broken Arrow (108 acres)
- Mineral King Units
 - Redwood (13 acres)
 - Lookout (400 acres)