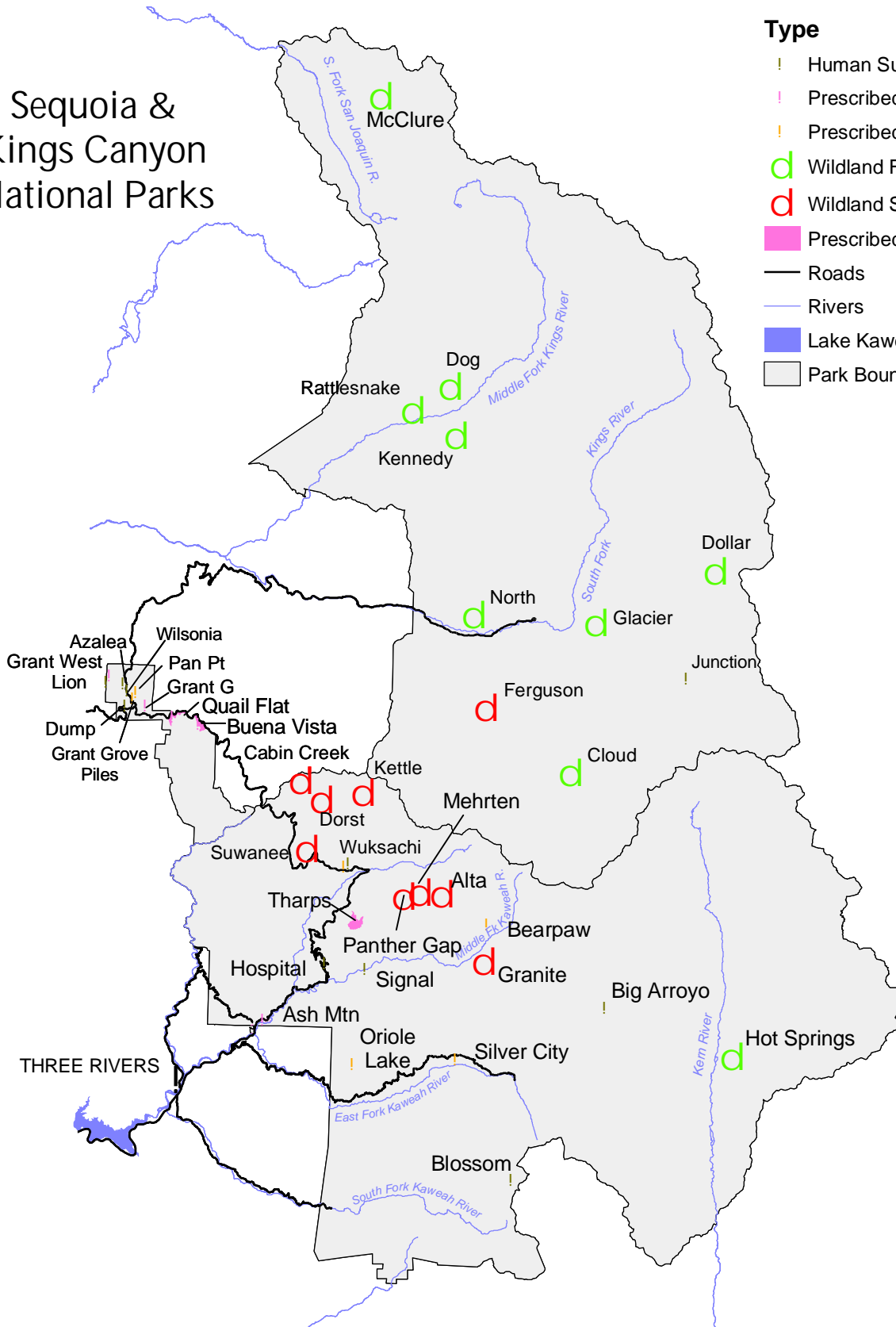


# Fire Atlas 2004

## Sequoia & Kings Canyon National Parks

### Type

- ! Human Suppression
- ! Prescribed Fire - Landscape
- ! Prescribed Fire-Piles
- d Wildland Fire Use
- d Wildland Suppression
- █ Prescribed Fire - Landscape
- Roads
- Rivers
- █ Lake Kaweah
- ▭ Park Boundaries



**Fire Atlas – 2004**  
**Sequoia and Kings Canyon National Parks**

**December 31, 2004**

**Total Acreage Burned by all Causes: 1,073.7 acres**  
**Total Number of Fires: 40**

**Wildland Fires (418.2 acres)**

Unplanned fires started by humans or lightning. Human-caused fires are always suppressed. Lightning-caused fires are evaluated to determine the appropriate management strategy. Some of these fires are allowed to burn for resource benefit (fire use), others are suppressed.

- **Fire Use (402.7 acres)**

Lightning-caused and actively managed to maintain natural ecosystem processes.

In 2004, there were 9 fire use projects including the Hot Springs Fire (332 acres). (Other fire names: Kennedy, Rattlesnake, Cloud, North, Glacier, Dollar, McClure, and Dog)

- **Suppressed (15.5 acres)**

- **Lighting Fires**

Lightning-caused fires that were suppressed due to factors such as proximity to park boundary, unacceptable smoke impacts, unacceptable weather conditions, or competition for firefighting resources regionally or nationally. In 2004, there were 9 of these fires totaling 11 acres. (Fire names: Suwanee, Dorst, Cabin Creek, Granite, Mehrten, Panther Gap, Ferguson, Kettle, and Alta)

- **Human-Caused Wildfires**

Unplanned and unwanted fires that were aggressively suppressed. In 2004, there were 10 human-caused fires totaling 4.5 acres. (Fire names: Wilsonia Pile, Hospital, Signal, Big Arroyo, Junction, Wuksachi, Blossom, Dump, Azalea, and Lion)

**Prescribed Fires (655.5 acres)**

Fires planned and set by NPS staff in designated areas to reduce hazardous fuels and/or restore natural conditions. In 2004, there were 12 prescribed burns:

- **Regular Landscape Burning (563.5 acres)**

Ash Mountain	Sequoia NP	25 acres
Tharps	Sequoia NP	224 acres
Quail Flat	Kings Canyon NP	110 acres
Grant G	Kings Canyon NP	1.5 acres
Buena Vista	Kings Canyon NP	133 acres
Grant West	Kings Canyon NP	70 acres

- **Pile Burning After Thinning Projects (92 acres)**

Grant Grove	Kings Canyon NP	10 acres
Pan Point	Kings Canyon NP	38 acres
Wuksachi	Sequoia NP	12 acres
Oriole Lake	Sequoia NP	14 acres
Bearpaw	Sequoia NP	5 acres
Silver City	Sequoia NP	13 acres