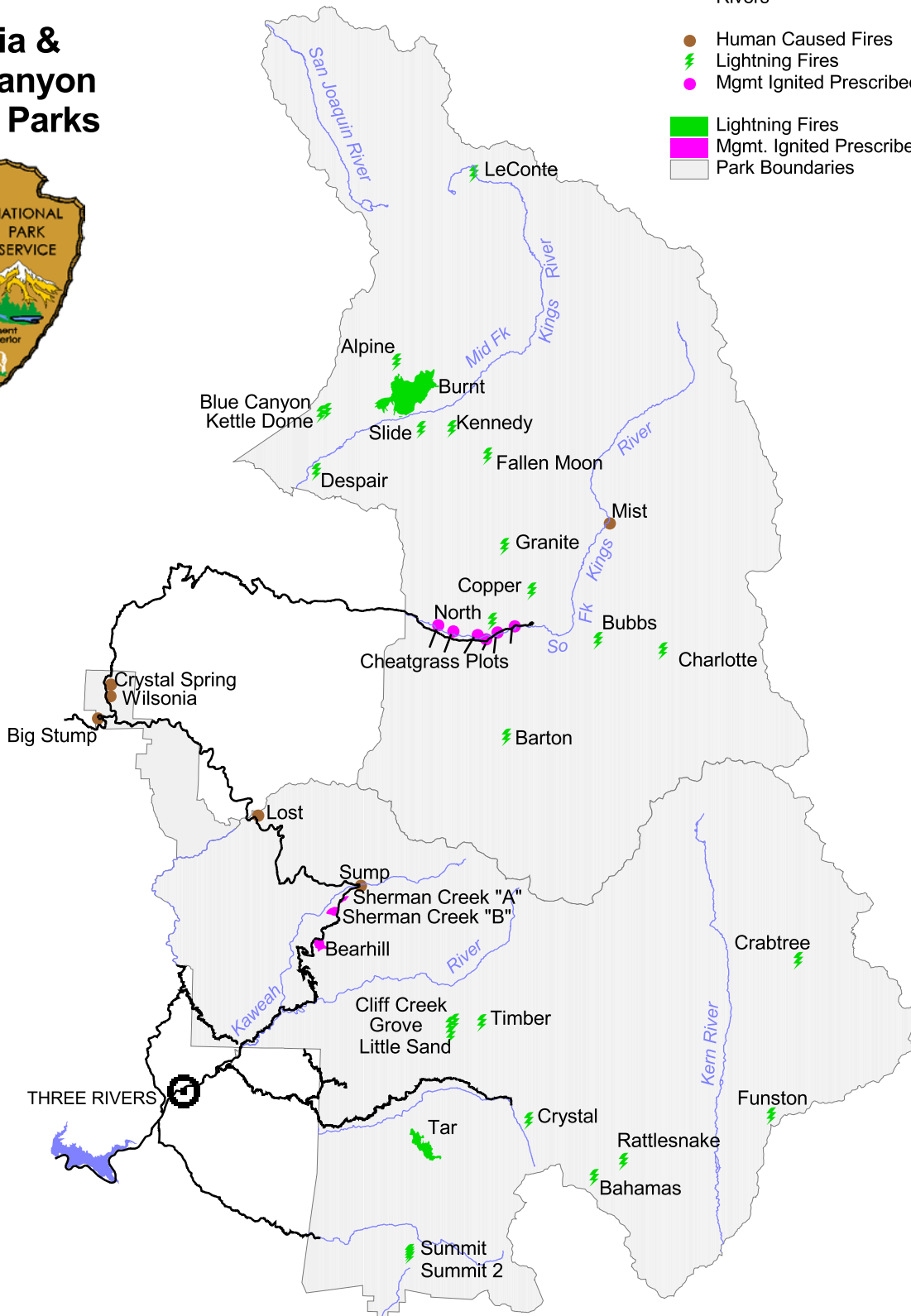


Fire Atlas 2001

Sequoia & Kings Canyon National Parks



- Roads
- Rivers
- Human Caused Fires
- ⚡ Lightning Fires
- Mgmt Ignited Prescribed Fires
- Lightning Fires
- Mgmt. Ignited Prescribed Fires
- Park Boundaries



Fire Atlas – 2001
Sequoia and Kings Canyon National Parks

December 31, 2001

Total Acreage Burned by all Causes: 3,077.7
Total Number of Fires: 37

Wildland Fires (2,741.1 acres)

Unplanned fires started by humans or lightning. Human-caused fires are always suppressed. Lightning-caused fires are evaluated to determine the appropriate management strategy. Some of these fires are allowed to burn for resource benefit, others are suppressed.

- **Fire Use (2,736.25 acres)**
Lightning-caused and actively managed to maintain natural ecosystem processes. In 2001, there were 21 fire use projects including the Burnt Fire in Kings Canyon National Park (2,213 acres) and the Tar Fire in Sequoia National Park (508 acres).
- **Suppressed (4.85 acres)**
 - **Lighting Fires**
Lightning-caused fires that were suppressed due to factors such as proximity to park boundary, unacceptable smoke impacts, unacceptable weather conditions, or competition for firefighting resources regionally or nationally. In 2001, there were 6 of these fires totaling 2.35 acres. (Fire names: Grove, Little Sand, Cliff Creek, Kettle Dome, Blue Canyon, and Timber)
 - **Human-Caused Wildfires**
Unplanned and unwanted fires that were aggressively suppressed. In 2001, there were 6 human-caused fires totaling 2.5 acres. (Fire names: Sump, Big Stump, Lost, Wilsonia, Crystal Springs, and Mist)

Prescribed Fires (336.6 acres)

Fires planned and set by NPS staff in designated areas to reduce hazardous fuels and/or restore natural conditions. In 2001, there were 4 prescribed burns:

- | | | |
|---------------------------|-----------------|-----------|
| • Bear Hill | Sequoia NP | 163 acres |
| • Sherman Creek A | Sequoia NP | 45 acres |
| • Sherman Creek B | Sequoia NP | 128 acres |
| • Cedar Grove Cheat Grass | Kings Canyon NP | .6 acres |