



Services Provided:

Audio/Visual Services - Overhead projectors, VCRs, DVD players, slide projectors, LCD projectors, polycoms for telephone conferences, flipcharts, and easels are available. On-site staff can assist with set-up and troubleshooting.

Catering Services - Our on-site catering service offers breakfast, lunch and dinner. They also provide morning and afternoon snacks. Please contact the Lakeside Café Project Manager, at 919.541.0011, for details.

Web-based E-mail - Access to web-based E-mail is available on site.

ATMs - Automated teller machines are located in the conference center area.

Other:

Computer Use on Campus - Prior to your event, please coordinate with the Conference Center Manager about bringing laptops on-site, to ensure compatibility with EPA computer systems and security requirements. EPA's network is PC-based.

Photography - Photographs are allowed only in public places.

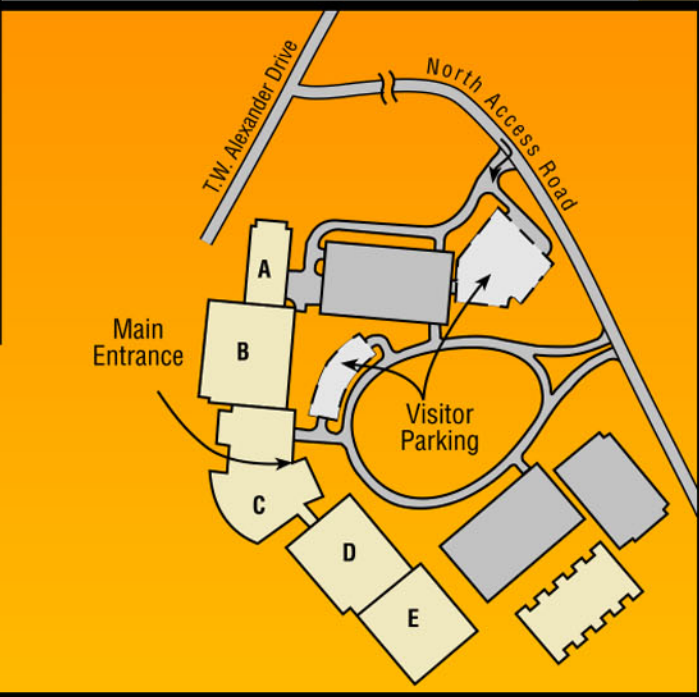
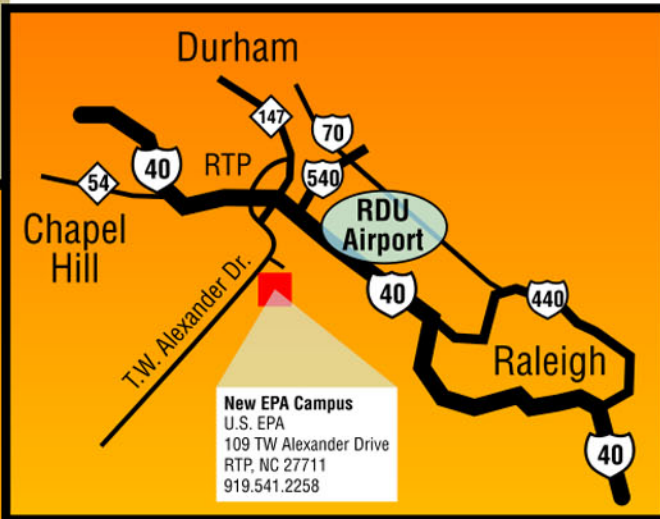
Walking Trails - Pick up a map in the lobby that shows the many walking trails located on campus.

Evacuation Plan - Please review the emergency evacuation plan posted by the door upon your arrival.

Security/Campus Access - All visitors must show a photo ID and keep their ID with them at all times. Visitors will be issued a visitor badge and will be required to wear their badge at all times.

EPA Store - Visitors are welcome to stop by the on-site store to purchase snacks, incidentals and EPA souvenirs, such as caps and T-shirts.

Raleigh-Durham International Airport - The airport is approximately 8 miles from the RTP campus. Driving time to our campus will vary based upon the traffic; it usually takes 15-20 minutes.



Directions:

From Interstate 40 (East or West)

- I-40 to Research Triangle Park, Exit 279A
- 1/4 mile after exit, left on T.W. Alexander Drive
- 1/4 mile, then left at the EPA entrance

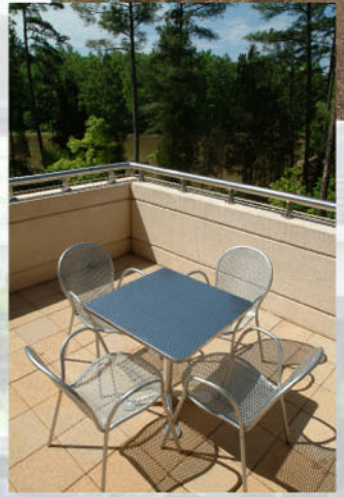
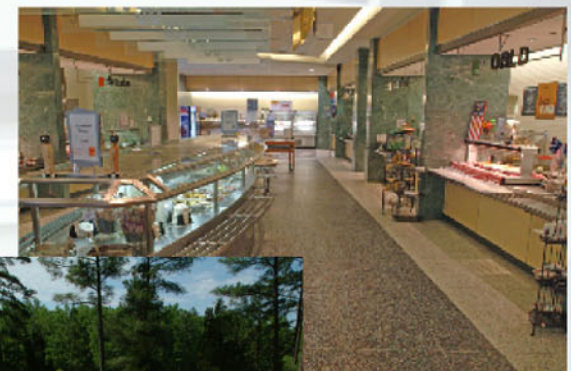
From Durham (North)

- Route 147 - "Durham Freeway" South to end
- Left on T.W. Alexander Drive
- 1/4 mile then left at EPA entrance





For more details, call the
Conference Center Manager 919.541.4114



For more information
about EPA's RTP campus,
please visit our web site:
www.epa.gov/rtp

